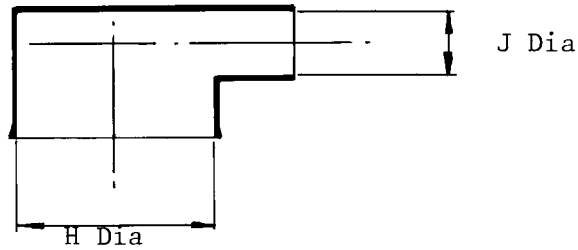


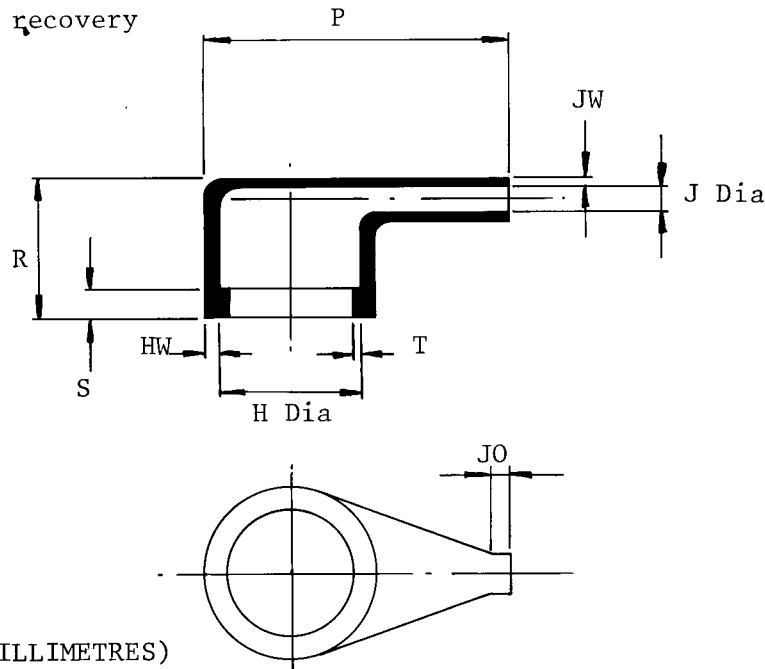
CUSTOMER MODIFIED PART

222D932-X-G01

a. Part as supplied



b. Part after unrestricted recovery



DIMENSIONS (IN MILLIMETRES)

| Part Number | H | | J | | P | R | S | T | JO | HW | JW |
|-------------------|----------|----------|----------|----------|-----------|----------|----------|----------|-----------|-----------|-----------|
| | Min a | Max b | Min a | Max b | +10% b | Ref b | Ref b | Ref b | +10% b | +20% b | +20% b |
| 222D932 -X-G01 | 26 | 19,1 | 8,0 | 2,6 | 40 | 18 | 3,0 | 1,0 | 7,0 | 1,8 | 1,1 |

Issued by

J. Henheit

Issue

3

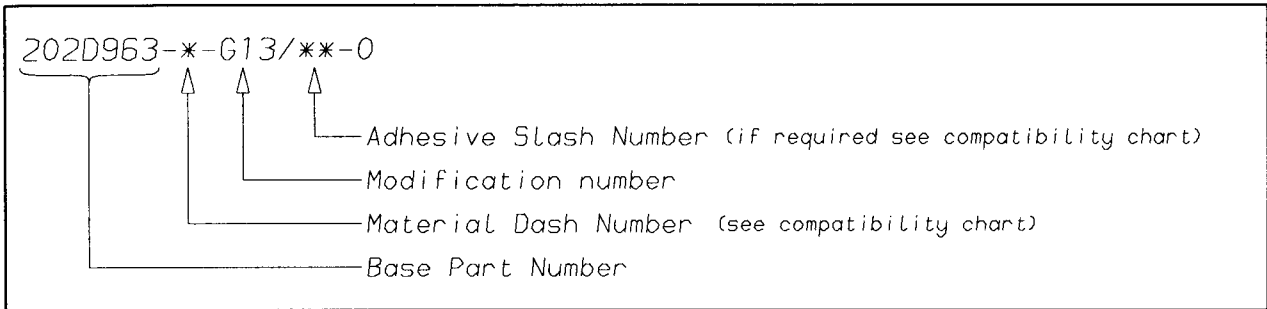
Date

April 1987

Approved by

S. P. Smyth Roberts

Ordering Information



COMPATIBILITY CHART

| MATERIAL DASH NUMBER | MATERIAL DESCRIPTION | COATING SLASH NUMBER |
|----------------------|----------------------------|----------------------|
| -3 | POLYOLEFIN, SEMI-RIGID | /42, /86 |
| -4 | POLYOLEFIN, FLEXIBLE | /42, /86 |
| -25 | ELASTOMER, FLUID RESISTANT | /86, /225 |
| | | |
| | | |
| | | |

AS SUPPLIED DIMENSIONS ARE FOR UNCOATED PARTS,
WHEN COATING IS ADDED, ENTRY DIAMETERS WILL REDUCE BY 1.5mm MAX.