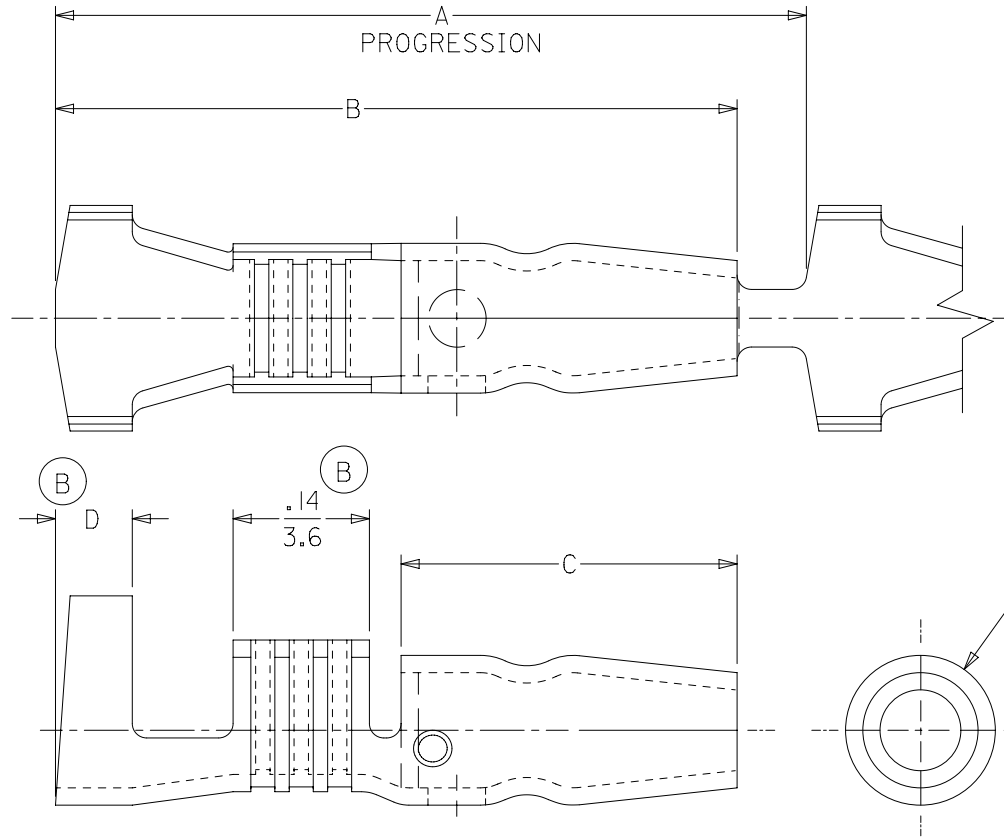


MATERIAL NUMBER	ENG. NUMBER	DESCRIPTION	FITS RECEPT. DIAMETER.	A	B	C	D	E
197244102	19724-4102	PLATED	.156/(3.96)	.76/(19.3)	.71/(18.0)	.35/(8.9)	.08/(2.0)	.156/(3.96)
197244402	19724-4402	PLATED	.180/(4.57)	.83/(21.2)	.74/(18.8)	.44/(11.2)	.06/(1.5)	.180/(4.57)



SALES DRAWING

NOTE(S):

- MATERIAL: BRASS
- MATERIAL THICKNESS: .016/(0.41)
- PLATING: ELECTRO-TIN

THIS DRAWING CONTAINS INFORMATION THAT IS PROPRIETARY TO MOLEX ELECTRONIC TECHNOLOGIES, LLC AND SHOULD NOT BE USED WITHOUT WRITTEN PERMISSION

DIMENSION UNITS	SCALE	CURRENT REV DESC: OBSOLETE PART NO	
IN/MM	5:1		
GENERAL TOLERANCES (UNLESS SPECIFIED)		EC NO: 628886	
	MM	INCH	
4 PLACES	± 0.0	±	DRWN: VLOKESHA 2019/10/10
3 PLACES	±	± 0.005	CHK'D: GGA 2020/01/13
2 PLACES	± 0.13	± 0.01	APPR: GGA 2020/01/13
1 PLACE	± 0.25	±	INITIAL REVISION:
0 PLACES	±	±	DRWN: DLM 2002/12/20
ANGULAR TOL ± 0.5°		APPR: RWD 2002/12/20	
DRAFT WHERE APPLICABLE MUST REMAIN WITHIN DIMENSIONS		THIRD ANGLE PROJECTION	DRAWING
			A-SIZE
		SERIES	19724

<b>molex</b>		
VIBRAKRIMP SNAP PLUG 18-14 AWG, OPEN BARREL CHAIN STAMPED		
PRODUCT CUSTOMER DRAWING		
DOCUMENT NUMBER	DOC TYPE	DOC PART
SD-19724-002	PSD	001
REVISION	B1	
MATERIAL NUMBER	CUSTOMER	SHEET NUMBER
SEE CHART	GENERAL MARKET	1 OF 1

DOCUMENT STATUS	P1	RELEASE DATE	2020/01/13	05:55:47
-----------------	----	--------------	------------	----------