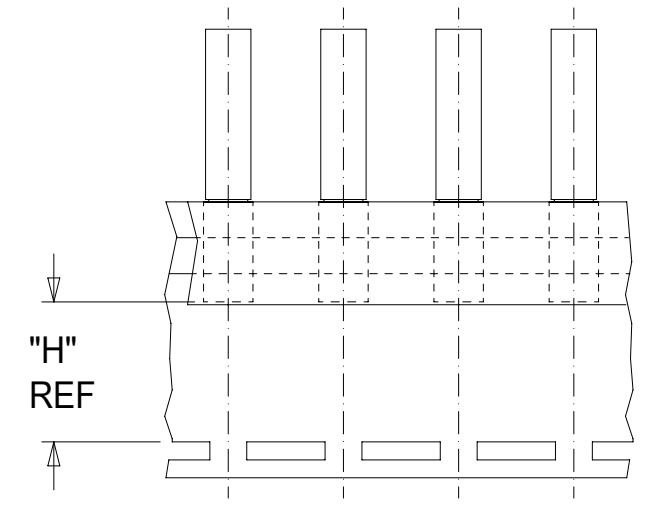
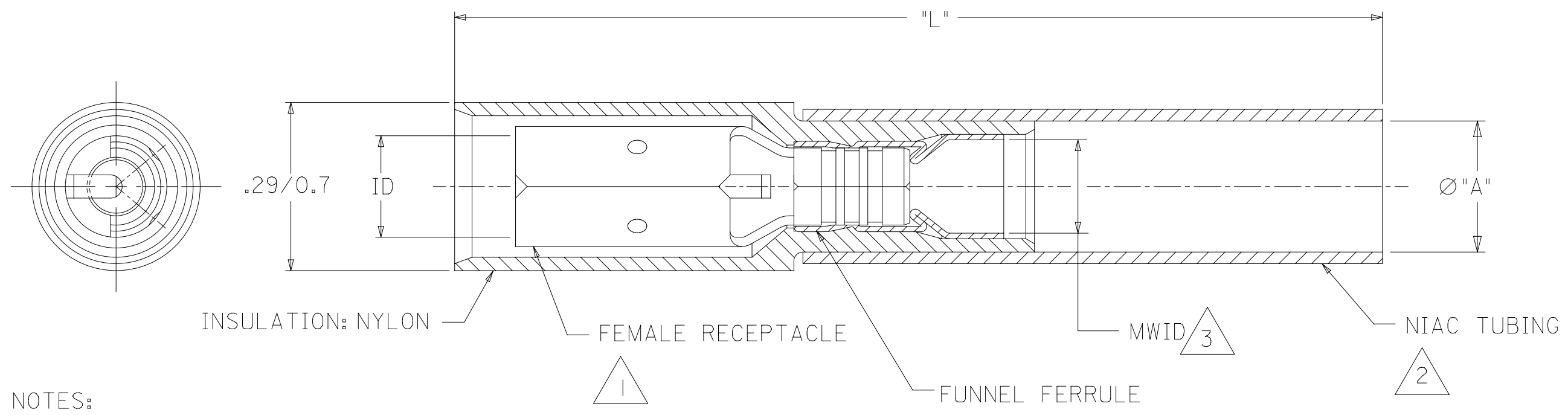


MATERIAL NUMBER	ENGINEERING NUMBER	MATERIAL NUMBER ON TAPE	ENGINEERING NUMBER ON TAPE	AWG	COLOR CODE	MWID	"ID" MIN	"L" MAX	"A" MIN	"H" REF
191640052	SBRA-8156N	191641151	SBRA-8156NT	22-18	RED	.13/3.3	.156/3.96	1.62/41.2	.235/5.97	(D3) .42 (10.7)
191640053	SBRA-8180N	191641152	SBRA-8180NT	22-18	RED	.13/3.3	.180/4.57	1.63/41.4	.235/5.97	
191640054	SBRB-8156N	191640414	SBRB-8156NT	16-14	BLUE	.15/3.81	.156/3.96	1.63/41.4	.230/5.84	
191640055	SBRB-8180N	191641147	SBRB-8180NT	16-14	BLUE	.15/3.81	.180/4.57	1.63/41.4	.230/5.84	



PARTS ON TAPE



- NOTES:
- 1 TERMINAL
 MATERIAL: COPPER
 PLATING: TIN
 - 2 INSULATION
 MATERIAL: HEAT SHRINKABLE
 NIAC TUBING W/ HOT-MELT
 ADHESIVE INNER LINER
 - 3 MWID= MAXIMUM WIRE INSULATION DIAMETER
4. PARTS ARE ROHS COMPLIANT.

THIS DRAWING CONTAINS INFORMATION THAT IS PROPRIETARY TO MOLEX ELECTRONIC TECHNOLOGIES, LLC AND SHOULD NOT BE USED WITHOUT WRITTEN PERMISSION					
DIMENSION UNITS		SCALE		CURRENT REV DESC: TAPE HT DIM: .42 REF WAS .455 ± .010	
INCH/MM		NTS			
GENERAL TOLERANCES (UNLESS SPECIFIED)					
	MM	INCH			
4 PLACES	±	±			
3 PLACES	±	±			
2 PLACES	± 0.25	± 0.01			
1 PLACE	± 0.5	± 0.02			
0 PLACES	±	±			
ANGULAR TOL		± 0.5°			
DRAFT WHERE APPLICABLE MUST REMAIN WITHIN DIMENSIONS		THIRD ANGLE PROJECTION		DRAWING	SERIES
				B-SIZE	19164
DOCUMENT NUMBER			DOC TYPE	DOC PART	REVISION
SD-19164-035			PSD	001	D3
MATERIAL NUMBER		CUSTOMER		SHEET NUMBER	
		GENERAL MARKET		1 OF 1	