

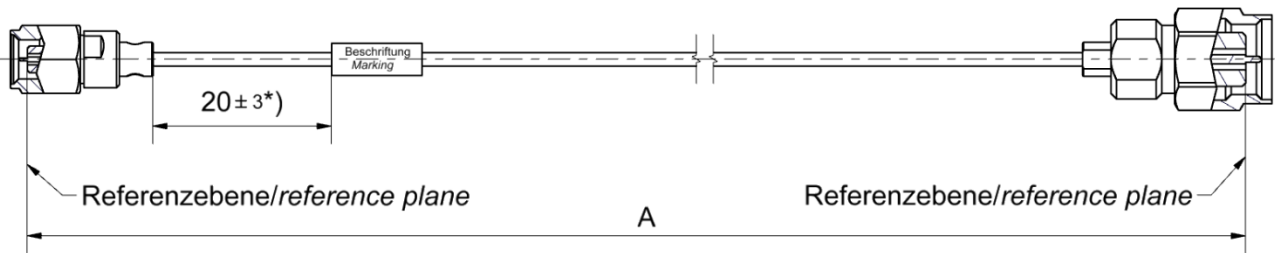
Technical Data Sheet

Rosenberger

Cable assembly

RPC-1.00 Plug – RTK 047-F – RPC-1.85 Plug

L70-344-XXX



All dimensions are in mm; tolerances: $\pm 3\text{mm}$ for $A \leq 300\text{mm}$; $\pm 1\%$ for $A > 300\text{mm}$
 *) If length "A" $\leq 90\text{mm}$ marking is mount centric $\pm 5\text{mm}$

Available variants

| Type | max. Insertion loss | Marking | Weight (g) / pce |
|-------------|----------------------------------------------------------------------------------------------|-------------------------------------------|-------------------------------------------------------------------|
| L70-344-XXX | $\leq (0.0020 * \sqrt{f[\text{GHz}]} + 0.00008 * f[\text{GHz}]) \frac{\text{dB}}{\text{mm}}$ | ROSENBERGER YYYYY-WW L70-344-XXX sssss | $0.0056 \frac{\text{g}}{\text{mm}} * A[\text{mm}] + 5.30\text{g}$ |

XXX – length in mm = A Maximum possible length = 6000mm
 WW – week YYYYY – year sssss – serial no.

Note: Weight:
 First constant = Cable weight per mm; Second Constant = Connector left and Connector right weight per pce

Assembly parts

| | |
|-----------------|---------------|
| Connector left | RPC-1.00 Plug |
| Connector right | RPC-1.85 Plug |
| Cable | RTK 047-F |
| Armour | none |

Electrical data

| | |
|-----------------------------|--------------------------------------------------------------------------|
| Impedance | 50 Ω |
| Frequency | DC to 70 GHz |
| Return loss ¹ | $\geq 17\text{ dB}$, DC to 50 GHz $\geq 14\text{ dB}$, 50 to 70 GHz |
| Insertion loss ¹ | see table available variants |

Individual testing and documentation:

Measurement plot with all 4 S – Parameters (S11; S22; S21; S12) is included with the cable assembly and on the backside the care and handling instruction is printed.

¹ Return Loss and Insertion Loss includes the measurement adaptor

Mechanical data

| | |
|-----------------------------|---------|
| Minimum bend radius static | 7.0 mm |
| Minimum bend radius dynamic | 14.0 mm |

Environmental data

| | |
|-------------------|-------------------|
| Temperature range | - 40 °C to +85 °C |
| RoHS | compliant |

While the information has been carefully compiled to the best of our knowledge, nothing is intended as representation or warranty on our part and no statement herein shall be construed as recommendation to infringe existing patents. In the effort to improve our products, we reserve the right to make changes judged to be necessary.

For the installation of the electrotechnical equipment, particular electrotechnical expertise is required.



| Draft | Date | Approved | Date | Rev. | Engineering change number | Name | Date |
|----------------|----------|------------|----------|------|---------------------------|------------------|----------|
| Marcel Panicke | 18.10.19 | Ronny Mark | 12.01.23 | b00 | 22-2195 | Marion Striegler | 10.01.23 |

Rosenberger Hochfrequenztechnik GmbH & Co. KG
 P.O.Box 1260 D-84526 Tittmoning Germany
www.rosenberger.com

Tel. : +49 8684 18-0
 Email : info@rosenberger.com

Page
 1 / 1