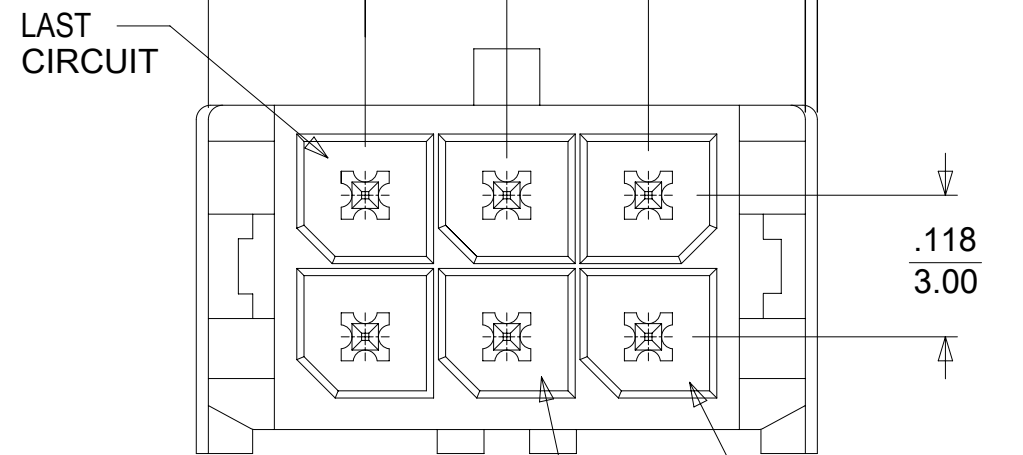
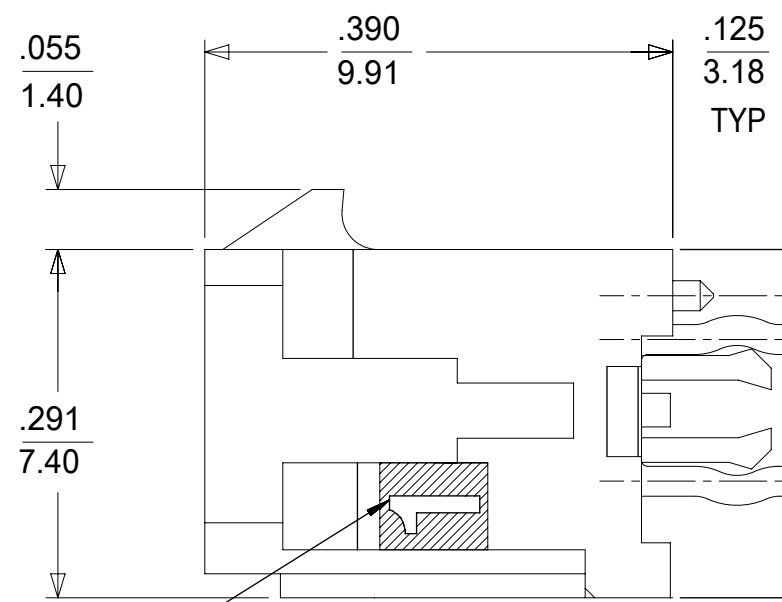
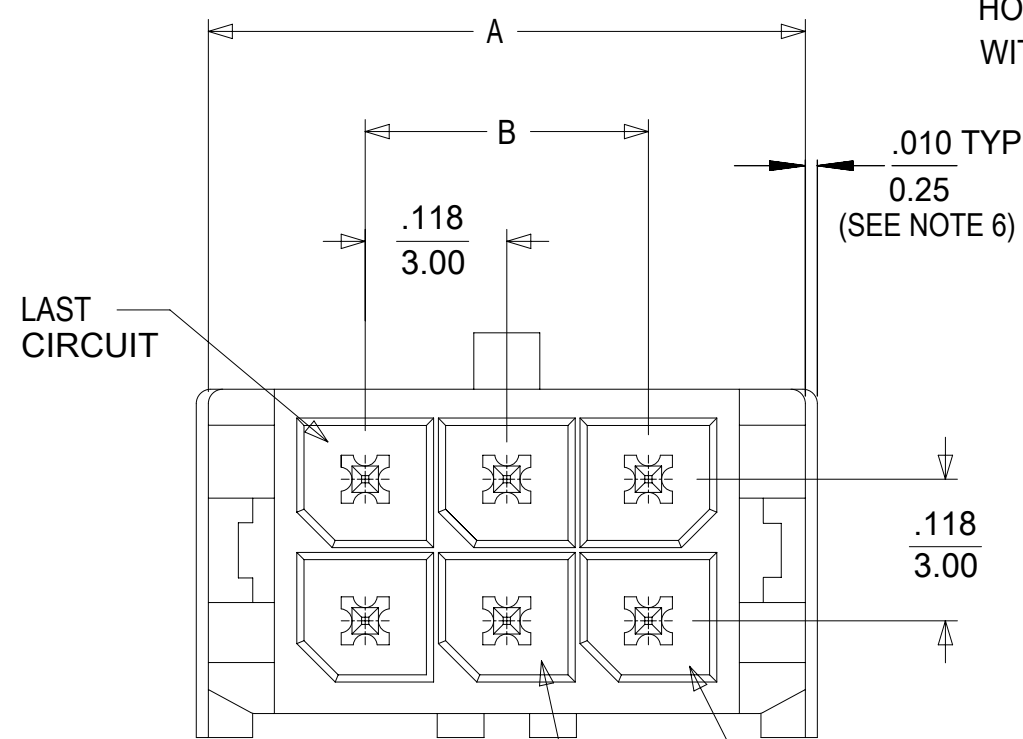
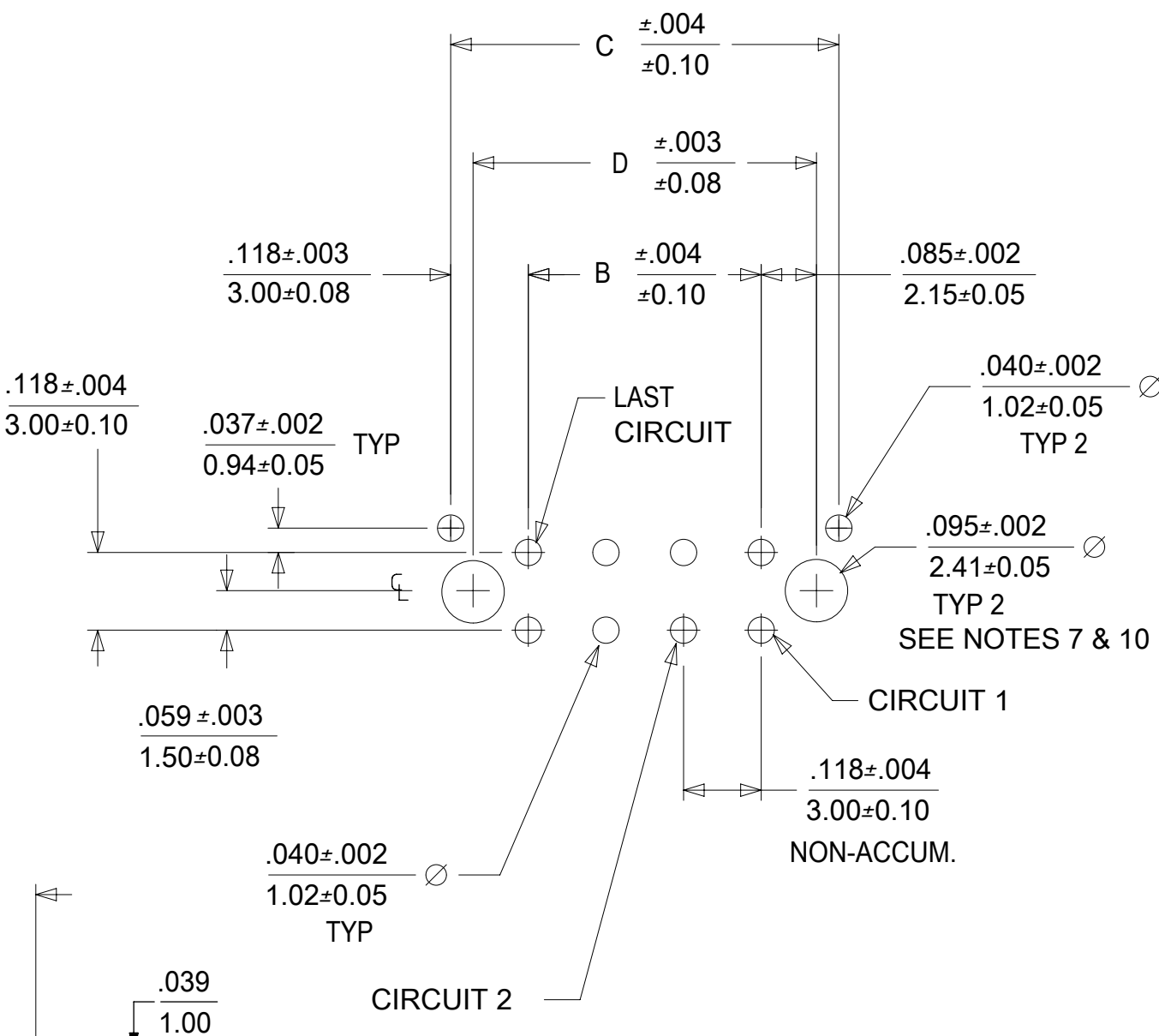


NOTE : (2) POLARIZATION PEGS ARE SHOWN.
HOWEVER, ASSEMBLIES MAY BE MANUFACTURED
WITH (1) PEG ONLY.

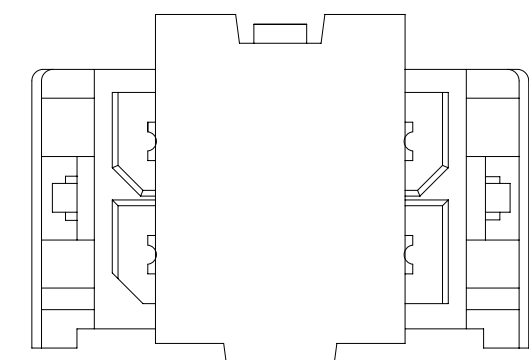


NOTES:
1. HOUSING MATERIAL: GLASS FILLED LIQUID CRYSTAL POLYMER, UL94V-0, COLOR: BLACK
TERMINAL MATERIAL: BRASS ALLOY
2. FINISH: A = .000060/(0.00152) MIN. REFLOWED MATTE TIN OVER
.000050/(0.00127) MIN. NICKEL PLATE.
(FINISH IS BRIGHT IN APPEARANCE, THICKNESS AS APPLIED
PRIOR TO REFLOW)
B = .000015/(0.00038) MIN. SELECT GOLD IN CONTACT AREA;
.000100/(0.00254) MIN. SELECT MATTE TIN ON SOLDER TAILS;
BOTH OVER .000050/(0.00127) MIN. NICKEL PLATE.
C = .000030/(0.00076) MIN. SELECT GOLD IN CONTACT AREA;
.000100/(0.00254) MIN. SELECT MATTE TIN ON SOLDER TAILS;
BOTH OVER .000050/(0.00127) MIN. NICKEL PLATE.
3. PRODUCT SPECIFICATION: PS-43045
4. PACKAGING: TAPE AND REEL (WITH DISPOSABLE CAPS) PER 430450008-PK.
5. MATES WITH MICRO FIT (3.0) RECEPTACLE SERIES 43025
6. CIRCUIT SIZES 2-6: "D" IS .265/6.74 FOR .010/0.25 STEP
CIRCUIT SIZES 8-24: "D" IS .063/1.60 FOR .010/0.25 STEP.
7. TO MINIMIZE INSERTION FORCE OF MOUNTING CLIPS DURING ROBOTIC PLACEMENT
THE HOLE DIAMETER CAN BE INCREASED TO .108 ± .002/ 2.74 ± 0.05 AND THEN
EVALUATED PER PLACEMENT EQUIPMENT.
8. THIS PART CONFORMS TO CLASS B REQUIREMENTS OF COSMETIC SPECIFICATION PS-45499-002.
9. TEXT ON PART IS FOR REFERENCE ONLY. TEXT AND TEXT LOCATION MAY VARY DEPENDING ON
PART NUMBER AND/OR TOOL.
10. HOLES FOR CLIPS SHOULD BE PTH AND CLIPS SHOULD BE SOLDERED FOR BEST RETENTION TO PCB.

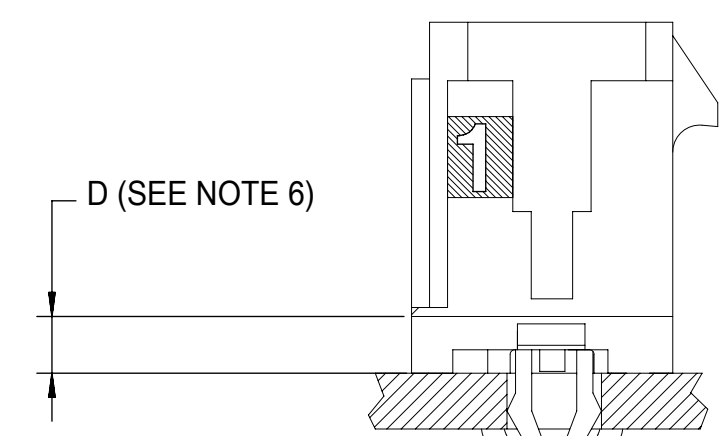
CKTS	TOOLED	FINISH A MATERIAL NO:	FINISH B MATERIAL NO:	FINISH C MATERIAL NO:
02	YES	43045-0325	43045-0309	
04	YES	43045-0525	43045-0509	
06	YES	43045-0725	43045-0709	
08	YES	43045-0925	43045-0909	
10	YES	43045-1125	43045-1109	
12	YES	43045-1325	43045-1309	
14	YES	43045-1525	43045-1509	
16	YES	43045-1725	43045-1709	
18	YES	43045-1925	43045-1909	
20	YES	43045-2125	43045-2109	
22	NO	43045-2325	43045-2309	
24	YES	43045-2525	43045-2509	



PCB LAYOUT: COMPONENT SIDE
RECOMMEND PCB THICKNESS: .062/1.57



SHOWN WITH DISPOSABLE CAP
SEE NOTE 4



PRESS FIT RETENTION CLIP

THIS DRAWING CONTAINS INFORMATION THAT IS PROPRIETARY TO MOLEX ELECTRONIC TECHNOLOGIES, LLC AND SHOULD NOT BE USED WITHOUT WRITTEN PERMISSION

SYMBOLS	DIMENSION UNITS	SCALE	CURRENT REV DESC: ADD PART NUMBERS FOR FINISH A, ADD NOTE 10.
	IN/MM	NTS	
GENERAL TOLERANCES (UNLESS SPECIFIED)	MM	INCH	EC NO: 643824 DRWN: LSCHWALLER 2020/08/21 CHK'D: SSOUSEK 2020/08/24 APPR: FSMITH 2020/08/27
	4 PLACES ±	±	
DRAFT WHERE APPLICABLE MUST REMAIN WITHIN DIMENSIONS	3 PLACES ±	± 0.01	INITIAL REVISION: DRWN: JDFOX 2015/05/01 APPR: FSMITH 2015/08/13
	2 PLACES ±	± 0.014	
THIRD ANGLE PROJECTION	1 PLACE ±	± 0.36	DRAWING SERIES C-SIZE 43045
	0 PLACES ±	±	
DRAWING SERIES	ANGULAR TOL ± 0.5 °		MATERIAL NUMBER CUSTOMER SHEET NUMBER SEE CHART GENERAL MARKET 1 OF 1

PRODUCT CUSTOMER DRAWING
DOCUMENT NUMBER: SD-43045-043
DOC TYPE: PSD
DOC PART: 001
REVISION: A2

CKTS	A	B	C	D
02	.262	NA	.236	.169
04	.380	.118	.354	.287
06	.498	.236	.472	.405
08	.616	.354	.591	.524
10	.734	.472	.709	.642
12	.852	.591	.827	.760
14	.970	.709	.945	.878
16	1.088	.827	1.063	.996
18	1.206	.945	1.181	1.114
20	1.325	1.063	1.299	1.232
22	1.443	1.181	1.417	1.350
24	1.561	1.299	1.535	1.469
	39.65	33.00	39.00	37.30