

REVISION Y

NOTES:

1. REPRESENTS A CRITICAL DIMENSION.
2. MAX BURR ALLOWANCE: .002 [.05].
3. MAX CUT FLASH: .015 [.38].
4. MINIMUM PUSHOUT FORCE: 2 LB.
5. COPLANARITY TO INCLUDE INSULATOR.
6. ALL FIRST ROW PINS TO BE .001 [.025] BELOW TO .003 [0.076] ABOVE BODY (SEE DETAIL 'F').
7. SHEAR TO DIMENSION SHOWN.
8. MEASURE AT BEND.
9. T-1S13-XX-T-2 MUST BE FILLED IN THE SAME WAY AS THE SELECTIVE PLATED PINS TO PREVENT BAND MARKS FROM BEING IN THE POST AREA.
10. NOTE DELETED.
11. ALL SECOND ROW PINS TO BE .003[0.076] BELOW TO .003[0.076] ABOVE BODY (SEE DETAIL 'E');

TABLE 1		
STYLE	PIN A	PIN B
-DH	T-1S13-09-XX-2	T-1S13-09-XX-2
-RA	T-1S13-02-XX-2	T-1S13-03-XX-2

PATENT NUMBER
6159045

TSH-1XX-XX-XX-XX-XX

No OF POSITIONS

- DH ROW SPEC:
-05 THRU -35
 - RA ROW SPEC:
-05 THRU -48
(PER ROW)
- (INCREMENTS OF 5 STD)

LEAD STYLE

- 01: .126 POST

PLATING SPECIFICATION

- G: 20µ" GOLD IN CONTACT AREA, 3µ" GOLD ON TAIL
- T: MATTE TIN CONTACT AND TAIL
- S: 30µ" SELECTIVE GOLD IN CONTACT AREA, MATTE TIN ON TAIL
- L: 10µ" SELECTIVE GOLD IN CONTACT AREA, MATTE TIN ON TAIL
- H: 30µ" GOLD IN CONTACT AREA, 3µ" GOLD ON TAIL
- F: 3µ" SELECTIVE GOLD IN CONTACT AREA, MATTE TIN ON TAIL
- TM: MATTE TIN CONTACT AND TAIL
- SM: 30µ" SELECTIVE GOLD IN CONTACT AREA, MATTE TIN ON TAIL
- LM: 10µ" SELECTIVE GOLD IN CONTACT AREA, MATTE TIN ON TAIL
- FM: 3µ" SELECTIVE GOLD IN CONTACT AREA, MATTE TIN ON TAIL

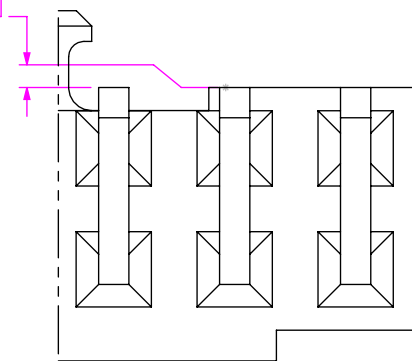
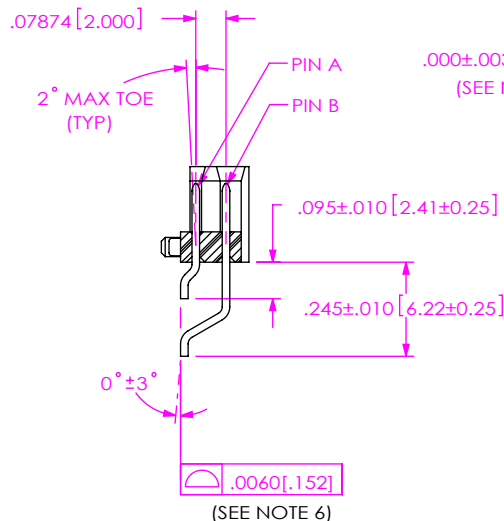
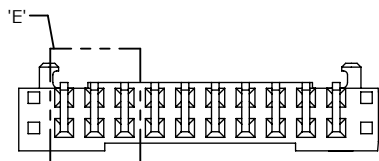
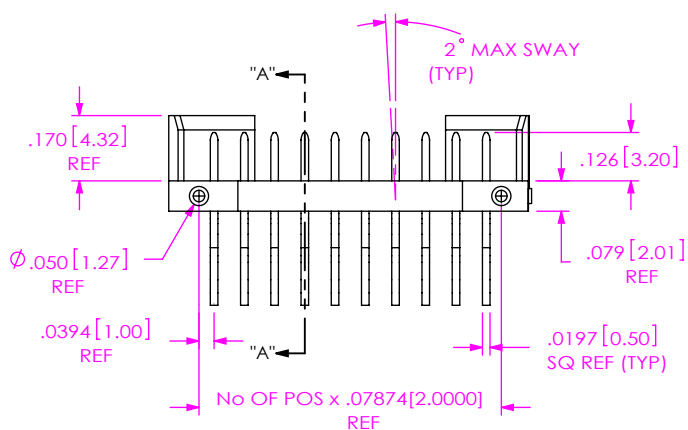
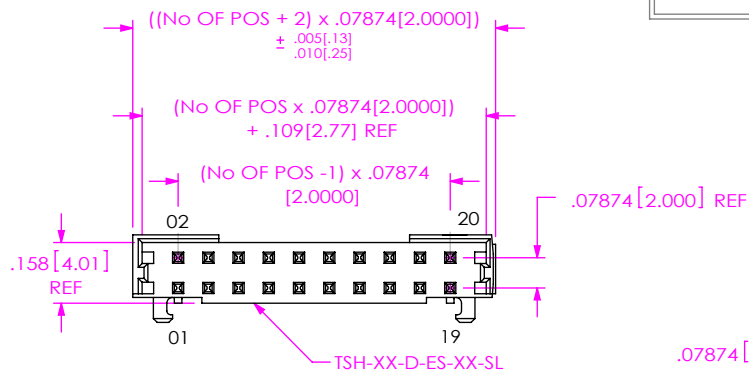
OPTION

- TR: TAPE AND REEL PACKAGING (-DH ONLY)
- K: POLYAMIDE FILM PAD (10 POS MIN) (USE K-500-300, SEE FIG 3, SHT 3) (NOT AVAILABLE ON -RA) (NOT AVAILABLE ON 15 THRU 30 POSITIONS, SEE NOTE FIG 3)
- SL: SOLDER LOCKS

ROW SPECIFICATION

- DH: DOUBLE HORIZONTAL (SEE FIG 1)
- RA: RIGHT ANGLE (SEE FIG 2, SHT 3)

DO NOT SCALE FROM THIS PRINT



DETAIL 'E'
SCALE 8:1

FIG 1
-DH: DOUBLE HORIZONTAL
TSH-110-01-XX-DH-SL SHOWN
(AVAILABLE IN POSITIONS -05 THRU -35)

UNLESS OTHERWISE SPECIFIED, DIMENSIONS ARE IN INCHES. TOLERANCES ARE:

DECIMALS	ANGLES
.XX: $\pm .01[.3]$	2°
.XXX: $\pm .005[.13]$	
.XXXX: $\pm .0020[.051]$	

PROPRIETARY NOTE
THIS DOCUMENT CONTAINS CONFIDENTIAL AND PROPRIETARY INFORMATION AND ALL DESIGN, MANUFACTURING, REPRODUCTION, USE, PATENT RIGHTS AND SALES RIGHTS ARE EXPRESSLY RESERVED BY SAMTEC, INC. THIS DOCUMENT SHALL NOT BE DISCLOSED, IN WHOLE OR PART, TO ANY UNAUTHORIZED PERSON OR ENTITY NOR REPRODUCED, TRANSFERRED OR INCORPORATED IN ANY OTHER PROJECT IN ANY MANNER WITHOUT THE EXPRESS WRITTEN CONSENT OF SAMTEC, INC.



520 PARK EAST BLVD, NEW ALBANY, IN 47150
PHONE: 812-944-6733 FAX: 812-948-5047
e-Mail: info@SAMTEC.com code: 55322

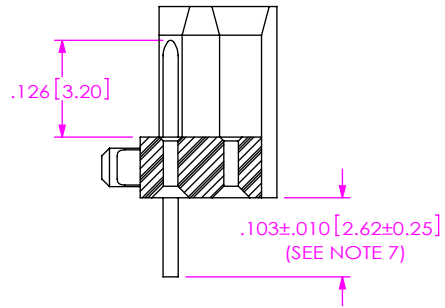
MATERIAL:
INSULATOR: LCP, UL 94 VO
TERMINAL: PHOSPHOR BRONZE

DO NOT SCALE DRAWING SHEET SCALE: 2:1

DESCRIPTION:
2mm HORIZONTAL MOUNT TERMINAL STRIP ASSEMBLY

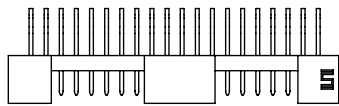
DWG. NO. TSH-1XX-XX-XX-XX-XX

BY: KEVIN B 9/8/99 SHEET 1 OF 3

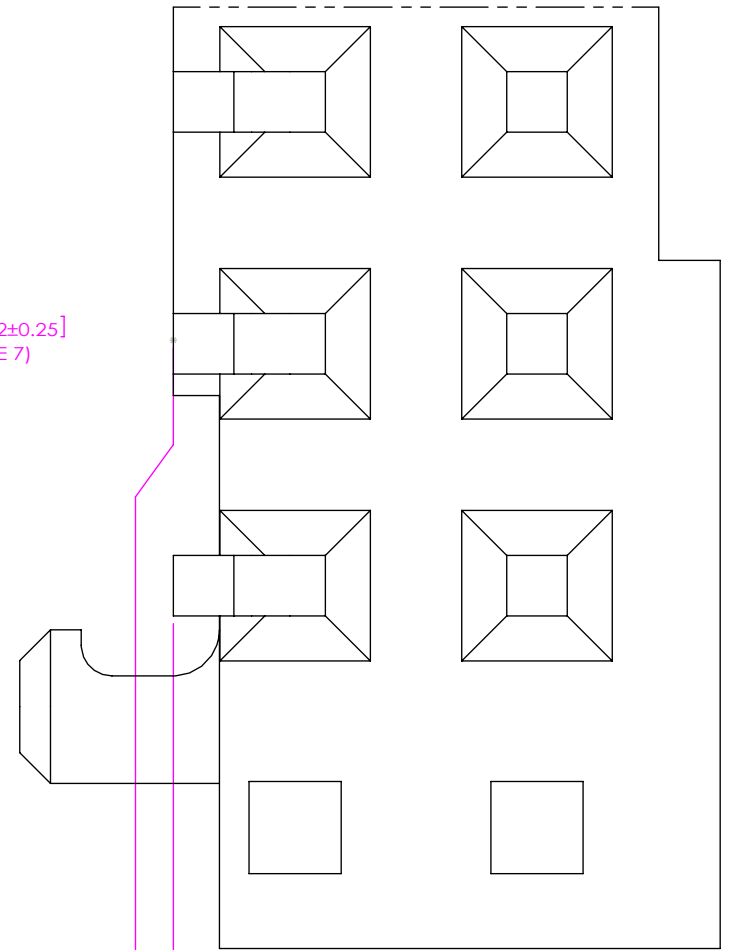
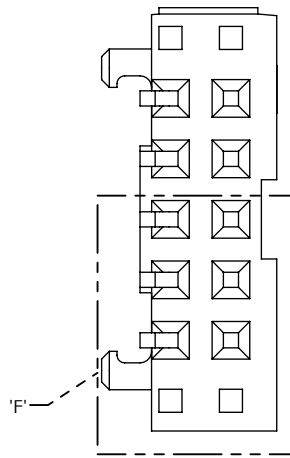
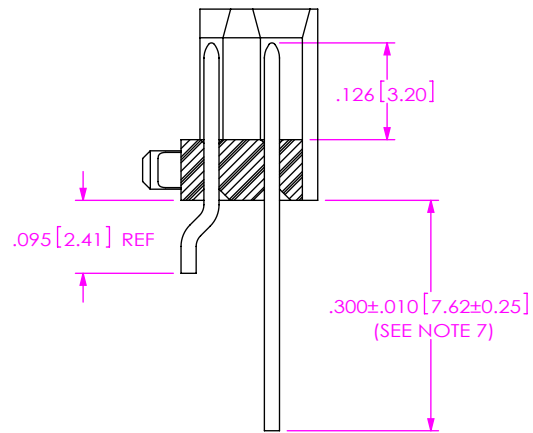
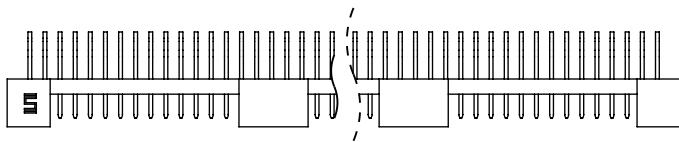


IN-PROCESS 1

POSITIONS -15 THRU -30



POSITIONS -31 THRU -48



DETAIL 'F'
SCALE 16:1
IN-PROCESS 2

PROPRIETARY NOTE
THIS DOCUMENT CONTAINS CONFIDENTIAL AND PROPRIETARY INFORMATION AND ALL DESIGN, MANUFACTURING, REPRODUCTION, USE, PATENT RIGHTS AND SALES RIGHTS ARE EXPRESSLY RESERVED BY SAMTEC, INC. THIS DOCUMENT SHALL NOT BE DISCLOSED, IN WHOLE OR PART, TO ANY UNAUTHORIZED PERSON OR ENTITY NOR REPRODUCED, TRANSFERRED OR INCORPORATED IN ANY OTHER PROJECT IN ANY MANNER WITHOUT THE EXPRESS WRITTEN CONSENT OF SAMTEC, INC.

DO NOT SCALE DRAWING

SHEET SCALE: 4:1

F:\DWG\MISC\MKTG\TSH-1XX-XX-XX-XX-MKT.SLDDRW



520 PARK EAST BLVD, NEW ALBANY, IN 47150
PHONE: 812-944-6733 FAX: 812-948-5047
e-Mail: info@SAMTEC.com code: 55322

DESCRIPTION:
2mm HORIZONTAL MOUNT TERMINAL STRIP ASSEMBLY

DWG. NO.
TSH-1XX-XX-XX-XX-XX

BY: KEVIN B 9/8/99 SHEET 2 OF 3

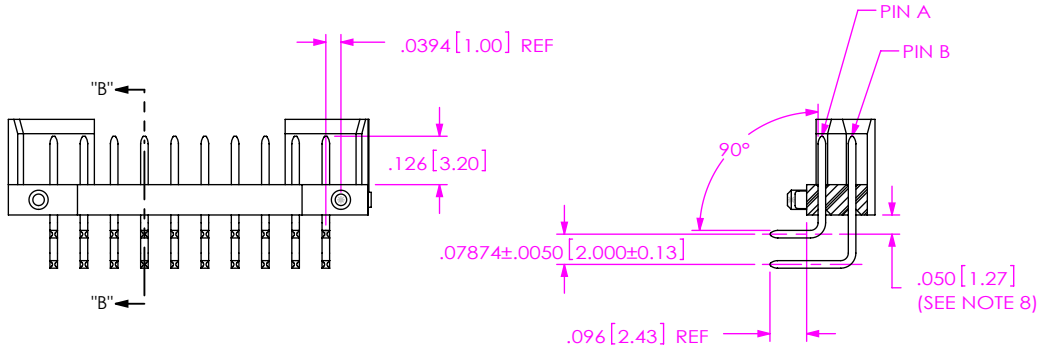
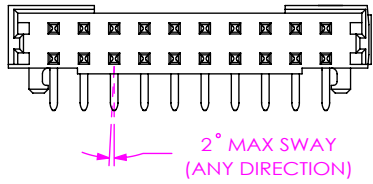


FIG 2
-RA: RIGHT ANGLE
(SAME AS FIG 1, UNLESS OTHERWISE STATED)
[AVAILABLE IN POSITIONS -05 THRU -48]

"R" = USE MEASURED DIMENSION
 "S" = (("R" - .177 [4.50]) / 2) ± .020 [.51]

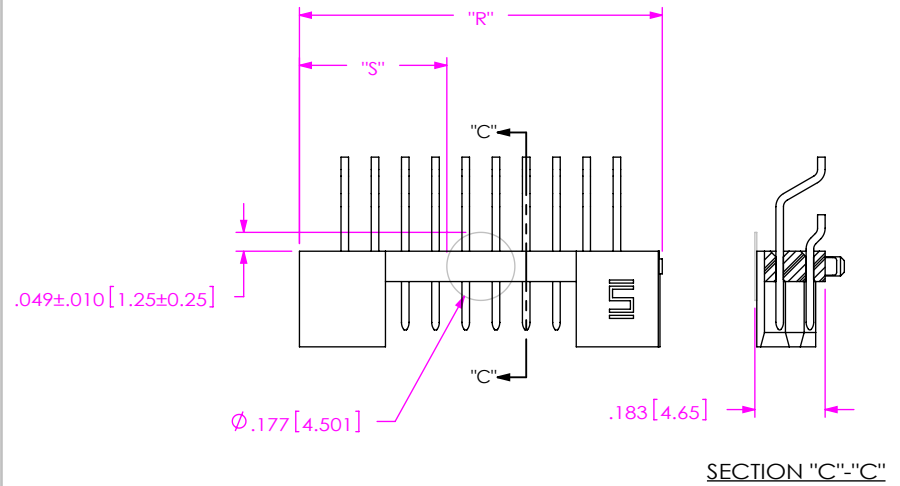
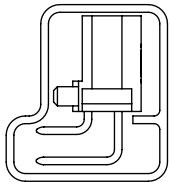


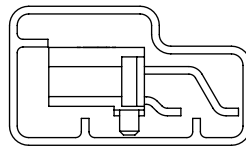
FIG 3
-K: POLYAMIDE FILM PAD
(10 POSITION MIN)
(SAME AS FIG 1, UNLESS OTHERWISE STATED)
NOTE:
FOR 15 THRU 30 POSITIONS, -K OPTION NOT NEEDED DUE TO LOCATION OF PLASTIC SHROUD

PACKAGING VIEW
-RA OPTION



TUBE: PT-1-24-01-45
PLUG: TP-03

PACKAGING VIEW
-DH OPTION



TUBE: PT-1-24-05-17
PLUG: TP-07

NOTE:
ALL POSITIONS ARE TO BE TUBED.

PROPRIETARY NOTE

THIS DOCUMENT CONTAINS CONFIDENTIAL AND PROPRIETARY INFORMATION AND ALL DESIGN, MANUFACTURING, REPRODUCTION, USE, PATENT RIGHTS AND SALES RIGHTS ARE EXPRESSLY RESERVED BY SAMTEC, INC. THIS DOCUMENT SHALL NOT BE DISCLOSED, IN WHOLE OR PART, TO ANY UNAUTHORIZED PERSON OR ENTITY NOR REPRODUCED, TRANSFERRED OR INCORPORATED IN ANY OTHER PROJECT IN ANY MANNER WITHOUT THE EXPRESS WRITTEN CONSENT OF SAMTEC, INC.

DO NOT SCALE DRAWING

SHEET SCALE: 2:1



520 PARK EAST BLVD, NEW ALBANY, IN 47150
 PHONE: 812-944-6733 FAX: 812-948-5047
 e-Mail: info@SAMTEC.com code: 55322

DESCRIPTION:
2mm HORIZONTAL MOUNT TERMINAL STRIP ASSEMBLY

DWG. NO.
TSH-1XX-XX-XX-XX-XX

BY: KEVIN B 9/8/99 SHEET 3 OF 3