



## Grove - Mini Fan

SKU 105020004

[This product is retired, please consider the new version Grove - Mini Fan V1.1.](#)

Grove - Mini Fan is a DC motor driver base on AVR microcontroller Atmega168,you can change code by breakout , this module also reserve servo connector,it can driver servo by change code ,Grove - Mini Fan is design for kids, which is use soft fan-leaved in order to avoid unnecessary damage.

### Features

- Grove connector
- Soft fan-leaved
- Arduino compatible
- User-friendly

### Part List

- Grove - Mini Fan
- Fan
- DC Motor
- Grove Cable-20cm

### Technical details

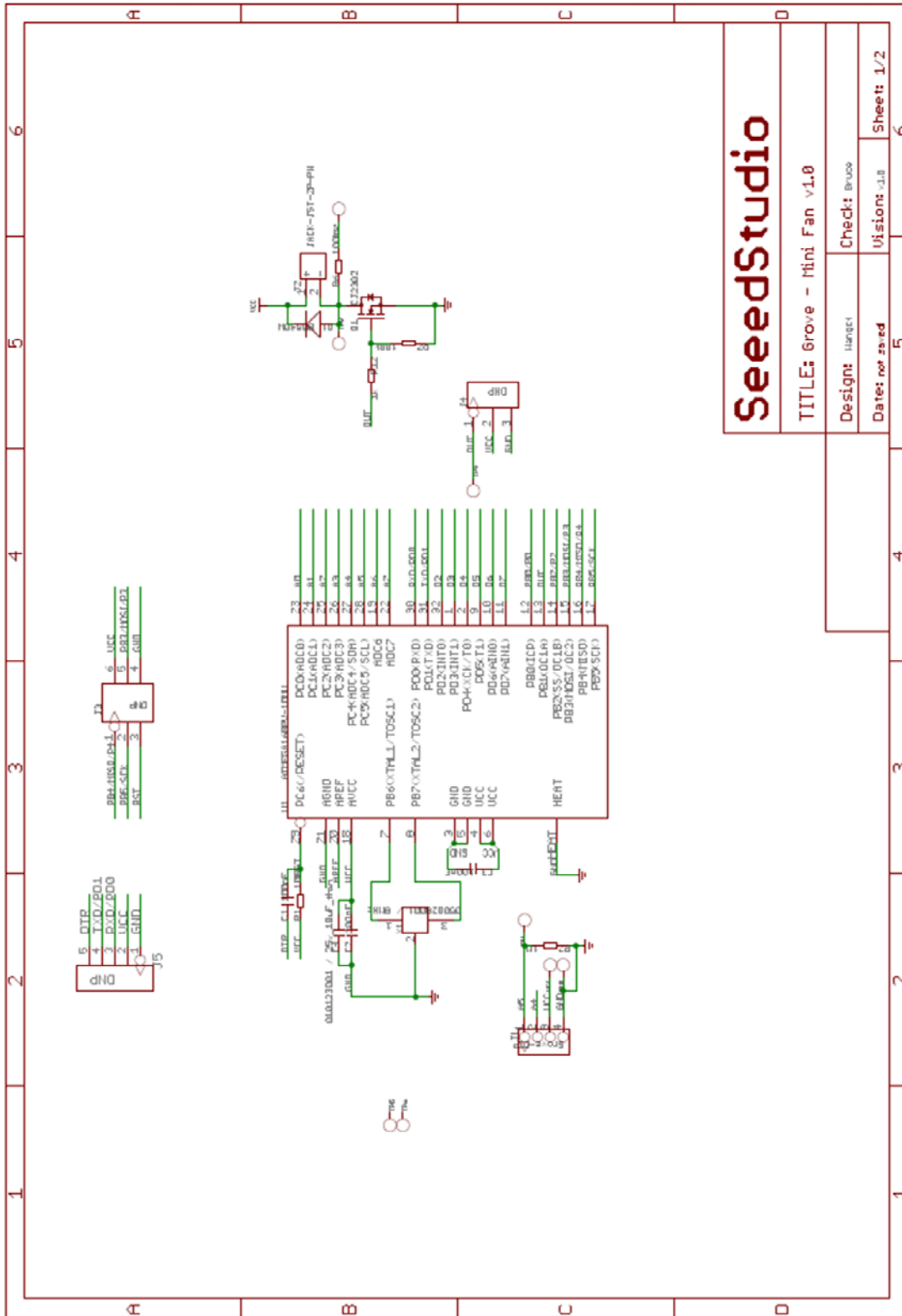
Dimensions	110mm x70mm x26mm
Weight	G.W 32g
Battery	Exclude

### Part List

Grove - Mini Fan	1
------------------	---

### Grove - Mini Fan

The Grove - Mini Fan module is a DC motor driver based on the AVR Atmega168 microcontroller. The module also provides a breakout through which you can change the microcontroller code.



# SeedStudio

TITLE: Grove - Mini Fan v1.0	
Design: Hantjei	Check: Bruce
Date: not sized	Version: 1.0
Sheet: 1/2	