

## RH-A4

## Tubular handles

Oval cross section, aluminium

METRIC



- 1
- 2
- 3
- 4
- 5
- 6
- 7
- 8
- 9
- 10
- 11
- 12
- 13
- 14
- 15
- 16
- 17
- 18

### HANDLE SHANKS

Black anodised aluminium, semi-glossy finish.  
Threaded blind holes.

### TUBE

Black anodised extruded aluminium, matte finish.

### SPECIAL EXECUTIONS ON REQUEST

- Different lengths.
- Tubes and handle shanks in different colour combinations (black, natural).

## RH-U4

## Tubular handles

Oval cross section, inclined mounting, aluminium

METRIC



### HANDLE SHANKS

Black anodised aluminium, semi-glossy finish.  
Threaded holes.

### BAR

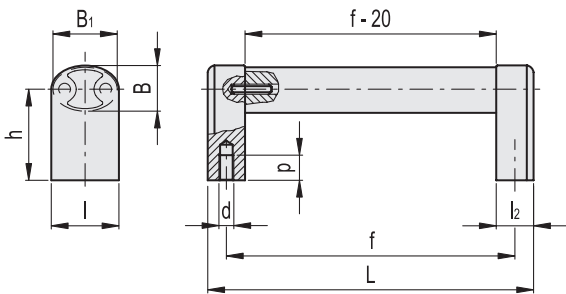
Black anodised extruded aluminium bar, semi-glossy finish.

### SPECIAL EXECUTIONS ON REQUEST

- Different lengths.
- Natural colour anodised aluminium tubes and handle shanks.

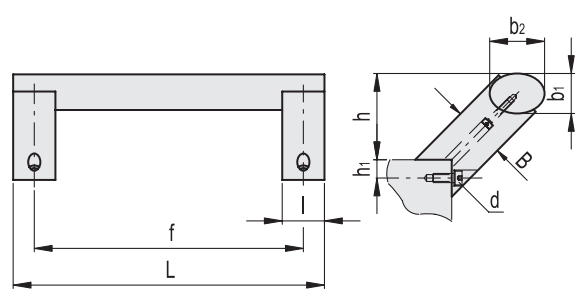


Conversion Table	
1 mm = 0.039 inch	
L	
mm	inch
220	8.66
270	10.63
320	12.60
335	13.19
420	16.53
535	21.06
735	28.94



METRIC

Code	f	L	d	p	B	B1	h	l	l2	ΔΔ
RHA4-35.200.S04	200	220	M8	15	25	35	52	36	20	376
RHA4-35.250.S04	250	270	M8	15	25	35	52	36	20	420
RHA4-35.300.S04	300	320	M8	15	25	35	52	36	20	455
RHA4-35.400.S04	400	420	M8	15	25	35	52	36	20	534



METRIC

Code	f	L	d	B	b1	b2	h	h1	ΔΔ
RHU4-35.300.04	300	335	M5x10	33	25	35	54	12	945
RHU4-35.500.04	500	535	M5x10	33	25	35	54	12	1176
RHU4-35.700.04	700	735	M5x10	33	25	35	54	12	1405