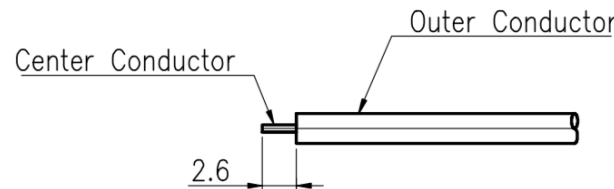
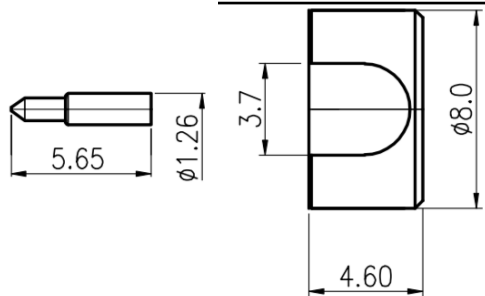


Form cable Bend After Solder & Gently Tap Cap in to Place Use Dummy Mated Female Connector to Avoid Damage



0.141" CABLE

**1. Electrical**

- 1.1 Impedance Value 50 Ohm
- 1.2 Frequency Value DC to 27GHz
- 1.3 VSWR Value 1.25:1 Max
- 1.4 Insertion Loss Value 0.05dB x Sq.Rt(FGHz)
- 1.5 Voltage Rating Value 500Vrms(Max.)
- 1.6 Insulation Resiatnce Value >5,000MOhm
- 1.7 Center Contact Resistance Value <3mOhms
- 1.8 Outer Contact Resistance Value <2mOhms

**2. Environmental**

- 2.1 Temperature Range Value -55°C to +155°C
- 2.2 RoHS Status Value Compliant
- 2.3 Durability Value >500 Cycles

ITEM	DESCRIPTION	MATERIALS	FINISH
7	Cover Body	Brass	Nickel
6	Interface Seal	Silicon	Red
5	Ret Ring	Stainless Steel	Passivated
4	Contact	Brass	Gold
3	Insultor	PTFE	Natural
2	Coupling Nut	Stainless Steel	Passivated
1	Body	Stainless Steel	Gold

REV.	DESCRIPTION	ECN	DRAWN	DATE
E	Updated Table Data & Note	477	DG	10/30/20
D	Changed Design to add Contact	422	DG	01/23/15
C	Updated Mechanicals	416	DG	12/24/14
B	Updated Performance Data	410	DG	10/27/14
A	Release		DG	10/26/10

REVISION HISTORY

<b>Customer DWG</b>		<b>Title SMA R/A Male Plug for ø0.141" Direct Solder</b>		
<b>Remarks:</b> Metric DIM.	<b>Originated:</b> 01/29/10	<b>Contact:</b> Sales@ConductRF.com Tel: +1 978 374 6840	<b>Range:</b> PSMA	<b>Sheet 1 of 1</b>
			<b>Dwg Ref:</b> PSM22A-A29	
Dimensions are nominal & are reference only, unless specifically called out.		<b>Checked:</b> JW	<b>Approved:</b> PL	<b>Rev:</b> E
				<b>Part No:</b> PSM22A-A29G01

