

REVISIONS					
ZONE	REV	DESCRIPTION	DATE	BY	APPRVD:
ZONE	1	INITIAL RELEASE	6-6-07	DMG	CLL
B7	2	Added comment to optional etch or stamp "302" or "304" if material is SS302 or SS304	4-23-08	DMG	CLL
B7	3	See ECO 1011	3-19-09	DMG	CLL
D1	4	See ECO 1025	3-6-12	DMG	CLL
B3	5	See ECO 1026 - CHANGED TOLERACNE FOR THICKNESS	6-9-12	DGS	CLL
B3	6	See ECO 1030 - CHANGED TOLERACNE FOR THICKNESS	12-11-12	DMG	CLL
B7	7	See ECO 1041 - Newly developed Geometry, changed marking information and added barcode	5-08-15	DMG	JW

**PRINT APPROVAL**

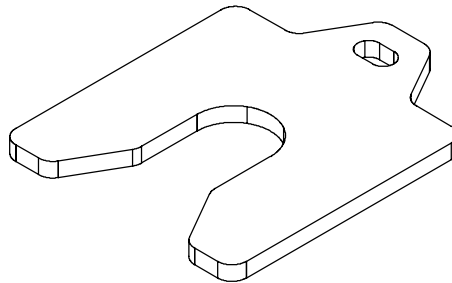
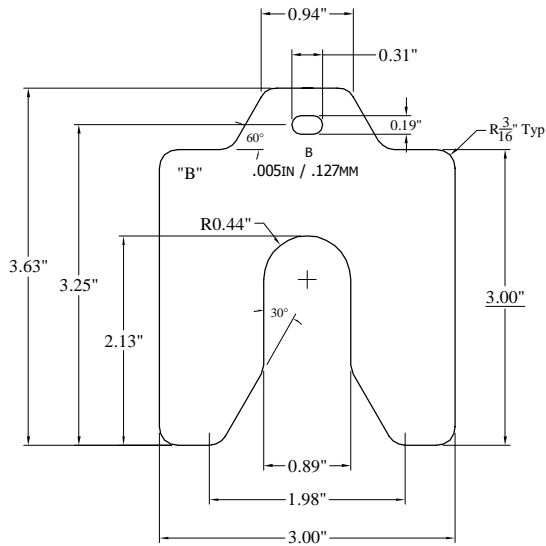
**MAUDLIN PRODUCTS**

CUST#: SHIM

DWG#: MSB-XXX      REV: 7

BY: DAGO GARZA      DATE: 5-08-15

THK.	TOL.	P/N 316SS.	P/N 302/304 SS.	P/N STEEL.	FLATNESS.	ALLOWABLE BURR
.001	±.00008	316-MSB001.	MSB001.	————	N/A	.0005
.002	±.0001	316-MSB002.	MSB002.	————	N/A	.0005
.003	±.00015	316-MSB003.	MSB003.	————	N/A	.0005
.004	±.0002	316-MSB004.	MSB004.	————	N/A	.0005
.005	±.00025	316-MSB005.	MSB005.	————	N/A	.0005
.006	±.0003	316-MSB006.	MSB006.	————	N/A	.001
.007	±.00035	316-MSB007.	MSB007.	————	N/A	.001
.008	±.0004	316-MSB008.	MSB008.	————	N/A	.001
.009	±.00045	316-MSB009.	MSB009.	————	N/A	.001
.010	±.0005	316-MSB010.	MSB010.	————	N/A	.001
.012	±.0006	316-MSB012.	MSB012.	————	N/A	.001
.015	±.0005	316-MSB015.	MSB015.	————	N/A	.001
.020	±.0005	316-MSB020.	MSB020.	————	N/A	.001
.025	±.00075	316-MSB025.	MSB025.	————	N/A	.001
.031	±.004	316-MSB031.	MSB031.	————	N/A	.002
** .050	±.001	316-MSB050.	MSB050.	————	±.015	.002
** .062	±.006	316-MSB062.	MSB062.	————	±.015	.002
** .075	±.002	316-MSB075.	MSB075.	————	±.015	.002
** .100	±.002	316-MSB100.	MSB100.	————	±.015	.002
** .125	±.0025	316-MSB125.	MSB125.	————	±.015	.002
$\frac{3}{16}$ "	±.010	————	MSB-187-SS.	MSB-187-S	±.015	.005
$\frac{1}{4}$ "	±.012	————	MSB-250-SS.	MSB-250-S	±.015	.005
$\frac{3}{8}$ "	±.020	————	MSB-375-SS.	MSB-375-S	±.015	.005
$\frac{1}{2}$ "	±.025	————	MSB-500-SS.	MSB-500-S	±.015	.005
$\frac{5}{8}$ "	±.030	————	MSB-625-SS.	MSB-625-S	±.015	.005
$\frac{3}{4}$ "	±.035	————	MSB-750-SS.	MSB-750-S	±.015	.005
1"	±.050	————	MSB-100-SS.	MSB-100-S	±.015	.005



**NOTE:**

1. "\*\*\*" = For 316 material, STD gauge thickness applies ( ±.006")
2. "B" = If 316 Shim, Etch or Stamp "316" Here.
3. Mark shim with shim size, thickness in standard and metric.

UNLESS OTHERWISE SPECIFIED, ALL DIMENSIONS ARE IN INCHES, AND TOLERANCES SHALL BE:	DWG TYPE	DETAIL - PART		
	SIGNATURES	DATE	MO-DA-YR	
.0 = ±.030"	DWN: DMG	6-6-07	CUSTOMER: Maudlin & Son Mfg.	PART NUMBER: See Table
.00 = ±.015"	APPRVD: CLL	6-6-07	DESCRIPTION: MSB Shims	
.000 = ±.005"			DWG No.: MSB-XXX	REVISION: 7
Fractions = $\pm\frac{1}{16}$ "			SCALE: 1:1	SIZE: SHEET 1 of 1
Angular = ±30min				
MATL: See Table				
THK: See Table				