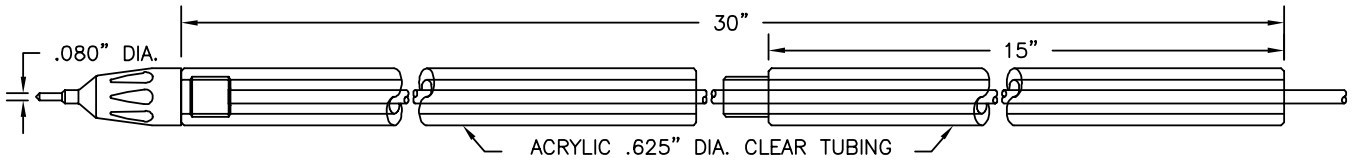


LONG HANDLE TEST PROBE AND LEADS

PROBE MODEL 40



CONSTRUCTION: .080" (2.03mm) 1/4-32 threaded assembly, solderless connection. Plated brass tip. Clear acrylic probe unscrews into two 15" (381 mm) pieces for convenient storage. Available with factory assembled leads only. 18 AWG PVC wire.

NOTE: Model 40 Probe comes standard with model 9398 tip. You may purchase additional tips separately.

Probe Tip 9398

| Part No. | Description |
|----------|-------------------------------------|
| 9398 | .080" Pin Tip for Long Handle Probe |

Additional Long Handle Probe Tips:

Probe Tip 9399

| Part No. | Description |
|----------|---|
| 9399 | 45° .080" Pin Tip for Long Handle Probe |

Probe Tip 9400

| Part No. | Description |
|----------|--|
| 9400 | Extended .080" Pin Tip for Long Handle Probe |

LONG HANDLE PROBE AVAILABLE IN THE FOLLOWING TEST LEAD COMBINATIONS

All probes come standard with 9398 tip.
Standard wire for the following leads is 18 AWG PVC.

Additional lead lengths, wire types, and custom leads are available upon request.

PLEASE SPECIFY LENGTH IN INCHES WHEN ORDERING

Standard lengths include:

| | |
|-----|-------|
| 36" | 90cm |
| 48" | 120cm |
| 60" | 150cm |

Lead length measurement does not include handle.

| COLOR CHART | |
|-------------|-------|
| Red | black |

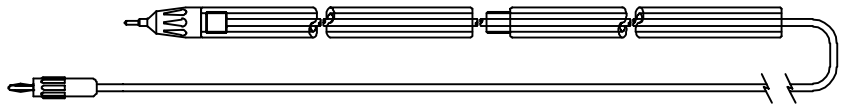
| SETS & CUSTOM COLOR | |
|---------------------|------------------|
| Standard Sets: | |
| R/B | = 1 red, 1 black |

LONG HANDLE TEST PROBE TO STANDARD BANANA PLUG, 18 AWG PVC

| Probe No. | Part No. |
|-----------|--------------------------------|
| Probe 40 | BX640 -(length)-(color) |

TEST PROBE See probe model 40.

STANDARD BANANA PLUG: See Part No. 9214.

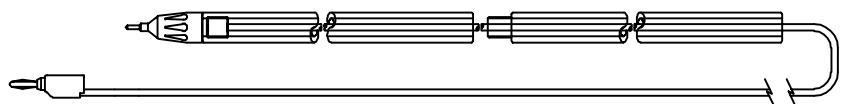


LONG HANDLE TEST PROBE TO STACKING STANDARD BANANA PLUG, 18 AWG PVC

| Probe No. | Part No. |
|-----------|--------------------------------|
| Probe 40 | 60140 -(length)-(color) |

TEST PROBE See probe model 40.

STACKING STANDARD BANANA PLUG: See Part No. 9260.

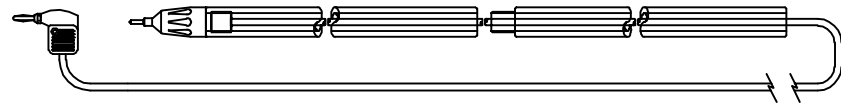


TEST PROBE TO METER BANANA PLUG, 18 AWG PVC

| Probe No. | Part No. |
|-----------|--------------------------------|
| Probe 40 | 60540 -(length)-(color) |

TEST PROBE See probe model 40.

METER BANANA PLUG: See Part No. 9206.

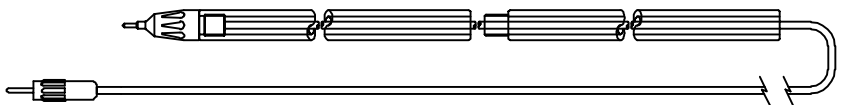


TEST PROBE TO .080" (2.03mm) PIN PLUG, 18 AWG PVC

| Probe No. | Part No. |
|-----------|--------------------------------|
| Probe 40 | AX640 -(length)-(color) |

TEST PROBE See probe model 40.

.080" (2.03mm) PIN PLUG: See Part No. 9250.



TEST PROBE TO .080" (2.03mm) STACKING PIN PLUG, 18 AWG PVC

| Probe No. | Part No. |
|-----------|--------------------------------|
| Probe 40 | 60240 -(length)-(color) |

TEST PROBE See probe model 40.

STACKING .080" (2.03mm) PIN PLUG: See Part No. 9259.

