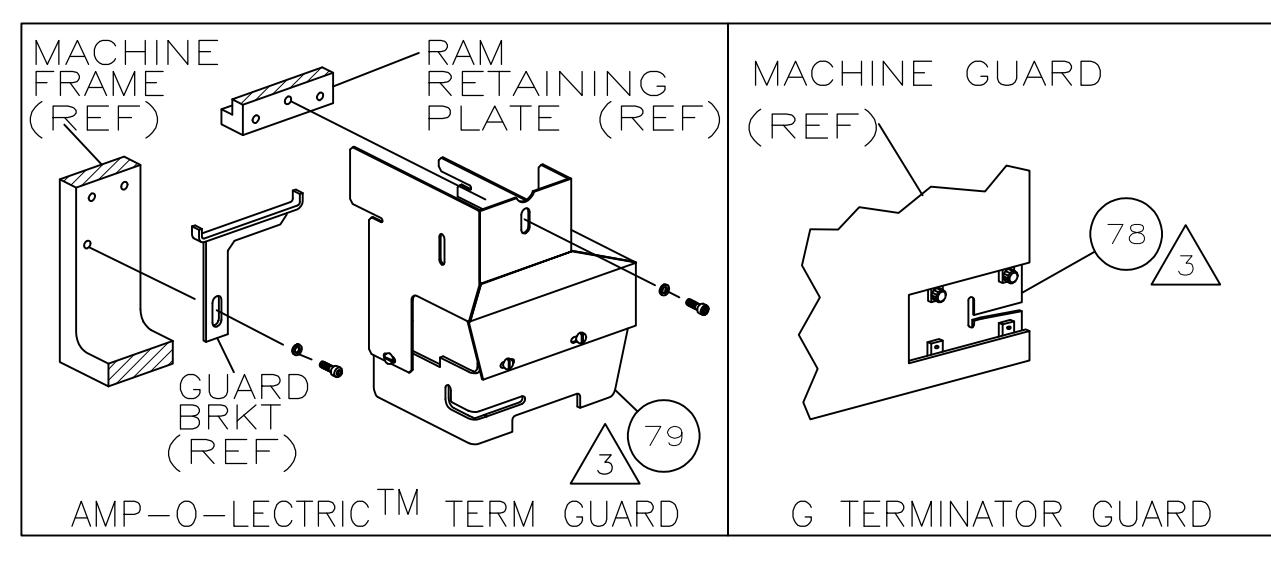


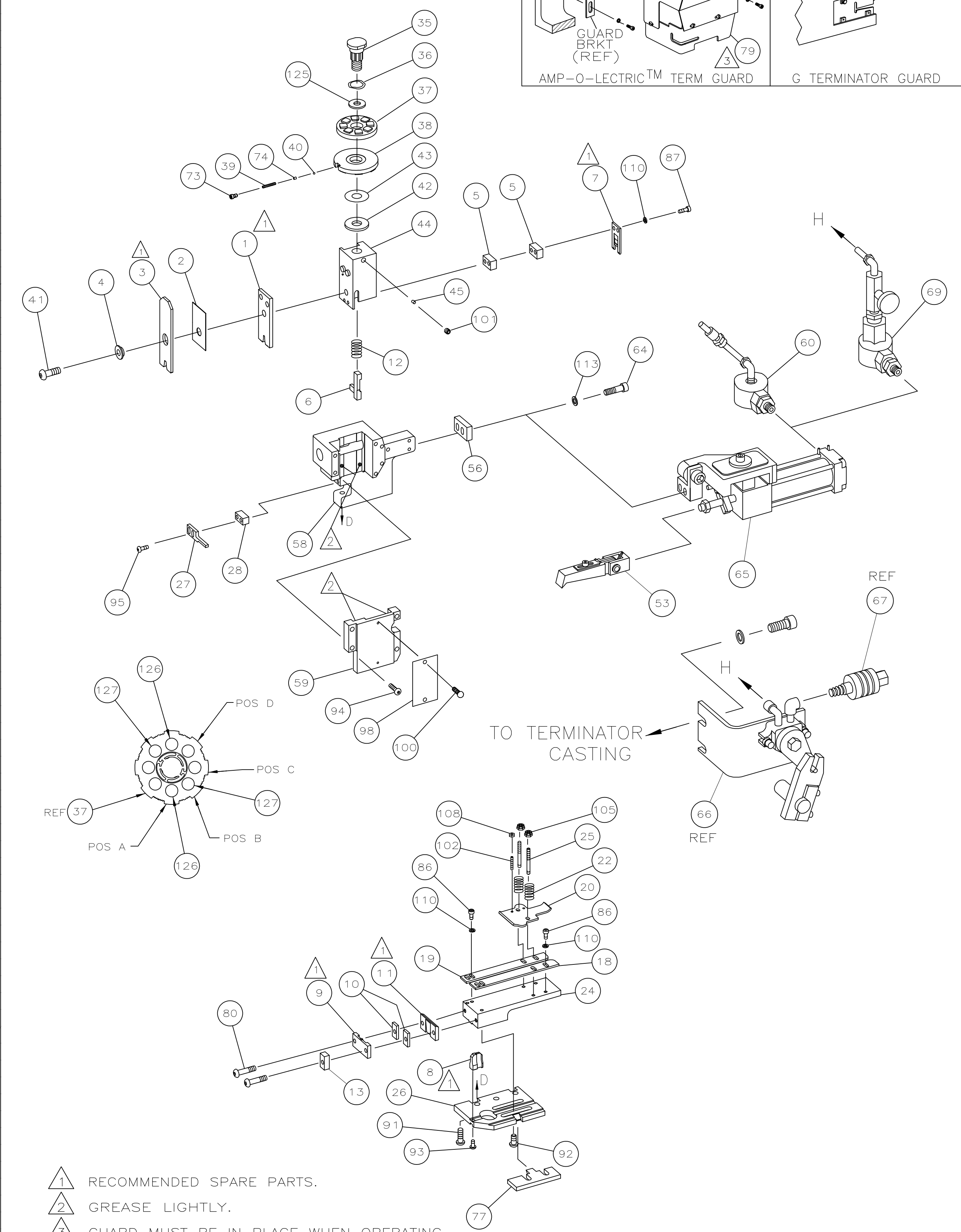
PART NUMBER	REV	FIRST USED
466623-1	T	122500-1
466623-2	T	565435-5



TERMINAL NAME: RING		CRIMPING DATA			
	61336	PAD LTR	CRIMP HEIGHT	WIRE SIZE	
	61337	A	.106 ±.002 [2.69 ±0.05mm]	14	
	640143	B	.100 ±.002 [2.54 ±0.05mm]	16	
		C	NOT	USED	
		D	NOT	USED	
		CRIMP	SIZE	TYPE	RANGE
		WIRE	.160 [4.06mm]	F	16-14
		INSUL	.210 [5.33mm]	0	.120-.180
WIRE STRIP LENGTH	TERM APPL SPEC	FEED	APPL INSTRUCTION	SET UP GAGE	LAYOUT
.172-.203	114-2084	1.370	408-8039	458638-1	918

LOC	DIST	REVISIONS			
A	66	F LTR	DESCRIPTION	DATE	DWN
		T1	ECR-09-015272	7-2009	MY TE

-1	LEADMAKER & BENCH MODEL G	AIR FEED
-2	BENCH MODEL K	AIR FEED



					129
					128
2	2	-	2-354778-1	PIN, WIRE DISC (.2600)B	127
2	2	-	354778-9	PIN, WIRE DISC (.2540)A	126
1	1	-	986950-1	WASHER, FLAT PRECISION	125
1	1	-	217238-1	GENERAL INSTRUCTION PACKAGE	124
1	1	-	4088039	EF APPL INST 408-8039	123
					122
					121
					120
					119
					118
					117
					116
					115
					114
2	2	-	21024-5	WASHER, LOCK (#10) AIR ASSY	113
					112
					111
4	4	-	21024-4	WASHER, LOCK (NO.8) SHEAR BL	110
					109
2	2	-	21018-4	NUT, HEX (4-40) DRAG	108
					107
					106
2	2	-	21022-2	NUT, HEX SL (8-32) DRAG STUD	105
					104
					103
2	2	-	2-21006-6	SCR, SKT SET (4-40x.62) DRAG	102
1	1	-	21009-2	SCR, SKT SET (1/4-20x.25) RAM	101
2	2	-	21017-2	SCR, DRIVE (#2x.19) ID PLATE	100
					99
1	1	-	461264-1	PLATE, IDENTIFICATION	98
					97
					96
2	2	-	2-21002-2	SCR, BHC (8-32x.50) STRIPPER	95
4	4	-	3-21002-0	SCR, BHC (10-32x.88) CAP	94
1	1	-	22733-8	SCR, BHC (8-32x.38 LW) ANVIL	93
4	4	-	3-21002-3	SCR, BHC (1/4-20x.50) ST GD PL	92
3	3	-	2-22733-8	SCR, BHC (1/4-20x.62) HSG	91
					90
					89
					88
2	2	-	3-21000-1	SCR, SHC (8-32x1.00) SLUG BLADE	87
4	4	-	2-21000-6	SCR, SHC (8-32x.38) STRIP GUIDE	86
					85
					84
					83
					82
					81
2	2	-	3-21002-1	SCR, BHC (10-32x1.00) SHEAR PL	80
1	-	-	455750-7	GUARD ASSY	79
-	REF	-	679532-1	INSERT, GUARD	78
1	-	-	694427-1	BRACKET, HOLD DOWN	77
					76
					75
1	1	-	690603-1	SPRING, ASSIST	74
1	1	-	23030-1	SCR, SKT CAP (6-32x.25) CP DSC	73
					72
					71
-2	-1	U/M	PART NO	DESCRIPTION	ITEM NO
PARTS LIST					
QTY REQD PER ASSY					

					70
4	1	-	692655-5	AIR FEED VALVE ASSY	69
					68
					67
REF	-	-	24042-2	VALVE, SHUT OFF	66
4	1	1	692655-6	AIR FEED VALVE ASSY	66
					65
					64
					63
					62
					61
-	1	-	692655-7	AIR FEED VALVE ASSY	60
1	1	-	458268-1	CAP, RAM	59
1	1	-	458267-1	HOUSING	58
					57
					56
					55
					54
4	1	1	460680-1	FEED FINGER ASSY	53
					52
					51
					50
					49
					48
					47
					46
					45
1	1	-	690191-1	PLUG, NYLON	45
1	1	-	458266-1	RAM	44
1	1	-	690125-1	WASHER, LAMINATED	43
1	1	-	690124-4	WASHER, RAM	42
1	1	-	690686-1	BOLT, CRIMPER (5/16-24x1.00)	41
1	1	-	23241-6	BALL, STEEL	40
1	1	-	690170-1	SPRING, COMPRESSION	39
1	1	-	690142-1	DISC, INSULATION	38
1	1	-	354777-1	WIRE DISC, PLASTIC	37
1	1	-	22480-5	WASHER, SPRING	36
1	1	-	690212-1	POST, RAM	35
					34
					33
					32
					31
					30
					29
1	1	-	3-690451-2	SPACER, STRIPPER	28
1	1	-	240639-1	STRIPPER	27
1	1	-	463915-2	PLATE, BASE	26
2	2	-	22354-8	DRAG, STUD	25
1	1	-	463903-1	PLATE, STRIP GUIDE	24
					23
					22
					21
					20
1	1	-	454177-2	DRAG, STOCK	20
1	1	-	458030-4	GUIDE, STRIP (REAR)	19
1	1	-	458031-4	GUIDE, STRIP (FRONT)	18
					17
					16
					15
					14
					13
1	1	-	1-690481-0	SPACER, HOLD DOWN	13
1	1	-	23846-1	SPRING, HOLD DOWN	12
1	1	-	458255-1	PLATE, REAR SHEAR	11
2	2	-	1-240645-2	SPACER, SHEAR PLATE	10
1	1	-	461449-1	PLATE, FRONT SHEAR	9
1	1	-	7-238005-7	ANVIL	8
1	1	-	238074-9	BLADE, SLUG	7
1	1	-	8-455892-0	HOLD DOWN, TERMINAL	6
2	2	-	5-238075-6	SPACER, SLUG BLADE	5
1	1	-	1-238009-8	SPACER, BLOCK CRIMPER	4
1	1	-	464463-1	CRIMPER, INSULATION	3
1	1	-	455888-8	SPACER, CRIMPER	2
1	1	-	464112-2	CRIMPER, WIRE	1
-2	-1	U/M	PART NO	DESCRIPTION	ITEM NO
PARTS LIST					
QTY REQD PER ASSY					

- 1 RECOMMENDED SPARE PARTS.
- 2 GREASE LIGHTLY.
- 3 GUARD MUST BE IN PLACE WHEN OPERATING APPLICATOR IN A BENCH MACHINE.
- 4 SEE DRAWING FOR COMPONENTS

THIS DRAWING IS A CONTROLLED DOCUMENT.

DIMENSIONS: INCHES

TOLERANCES UNLESS OTHERWISE SPECIFIED:

0 PLC	± .005
1 PLC	± .005
2 PLC	± .005
3 PLC	± .005
4 PLC	± .005
ANGLES	± .005

MATERIAL: - FINISH: -

WEIGHT: -

APPROVED: J. DODDS

DATE: 2-23-98

BY: C. FRISMAN

DATE: 2-26-98

DESIGNED: D. SALTZER

DATE: 2-23-98

TYCO ELECTRONICS CORPORATION

HARRISBURG, PA 17105-3608

END FEED HDM APPLICATOR

SIZE: A1

CAGE CODE: 00779

DRAWING NO: 466623

RESTRICTED TO: -

CUSTOMER DRAWING

SCALE: -

SHEET: 1 of 1

REV: T1