
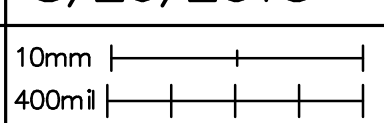
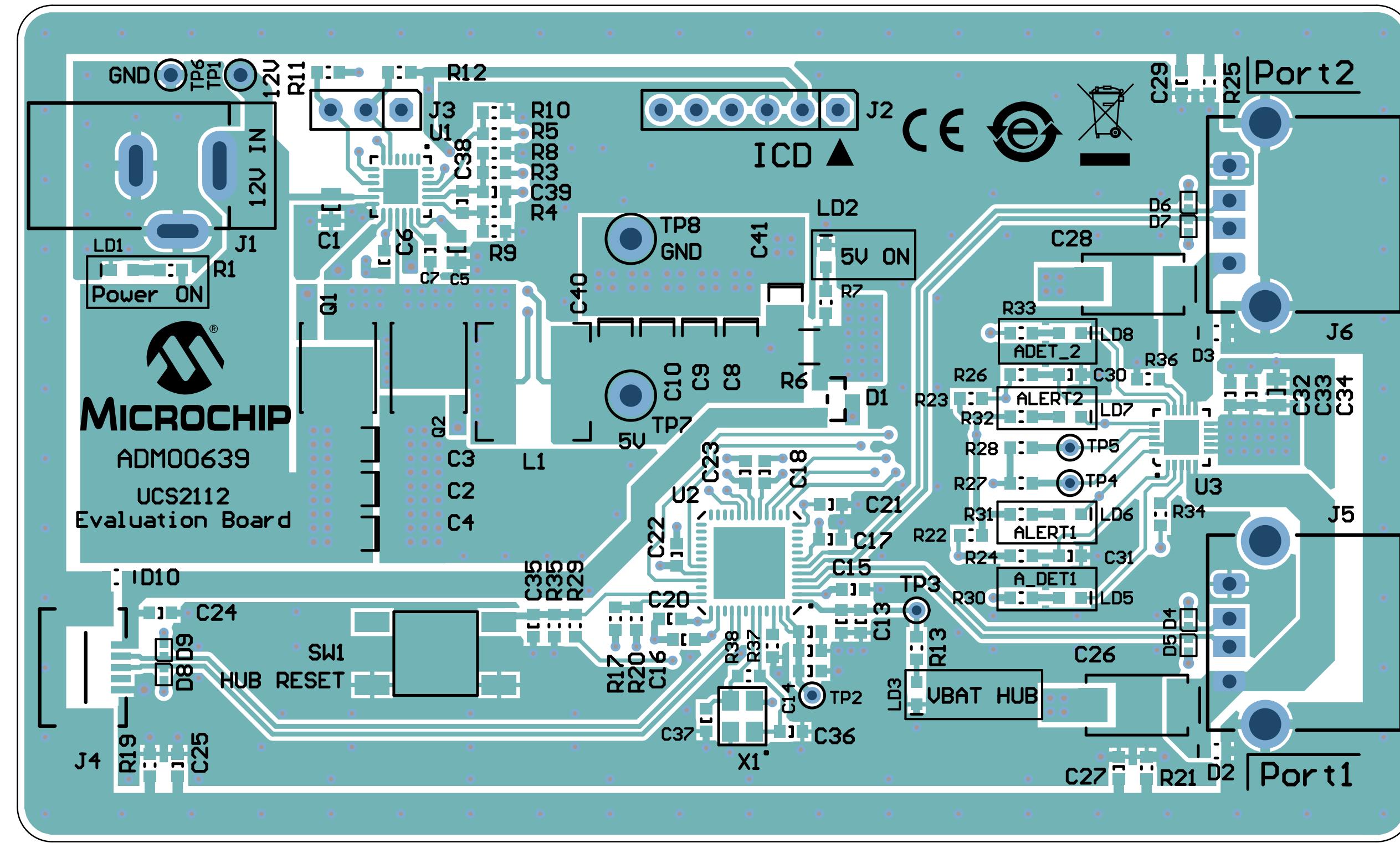



REV	ECO	Comments	Date

 MICROCHIP Microchip Technology Inc. 2355 W. Chandler Blvd. Chandler, AZ 85224	TITLE: UCS2112 Eval Board PART NUMBER: ADM00639	
	PCB DESIGNER: Adrian Toader	GERBER FILE: TOP Silk
	ENGINEER: Adrian Toader	BOARD NUMBER: 04-10367
	PCB FILE NAME: 04-10367-R3.PcbDoc	LAYER NAME: Top Overlay
DATE: 8/26/2015	REV: 3	

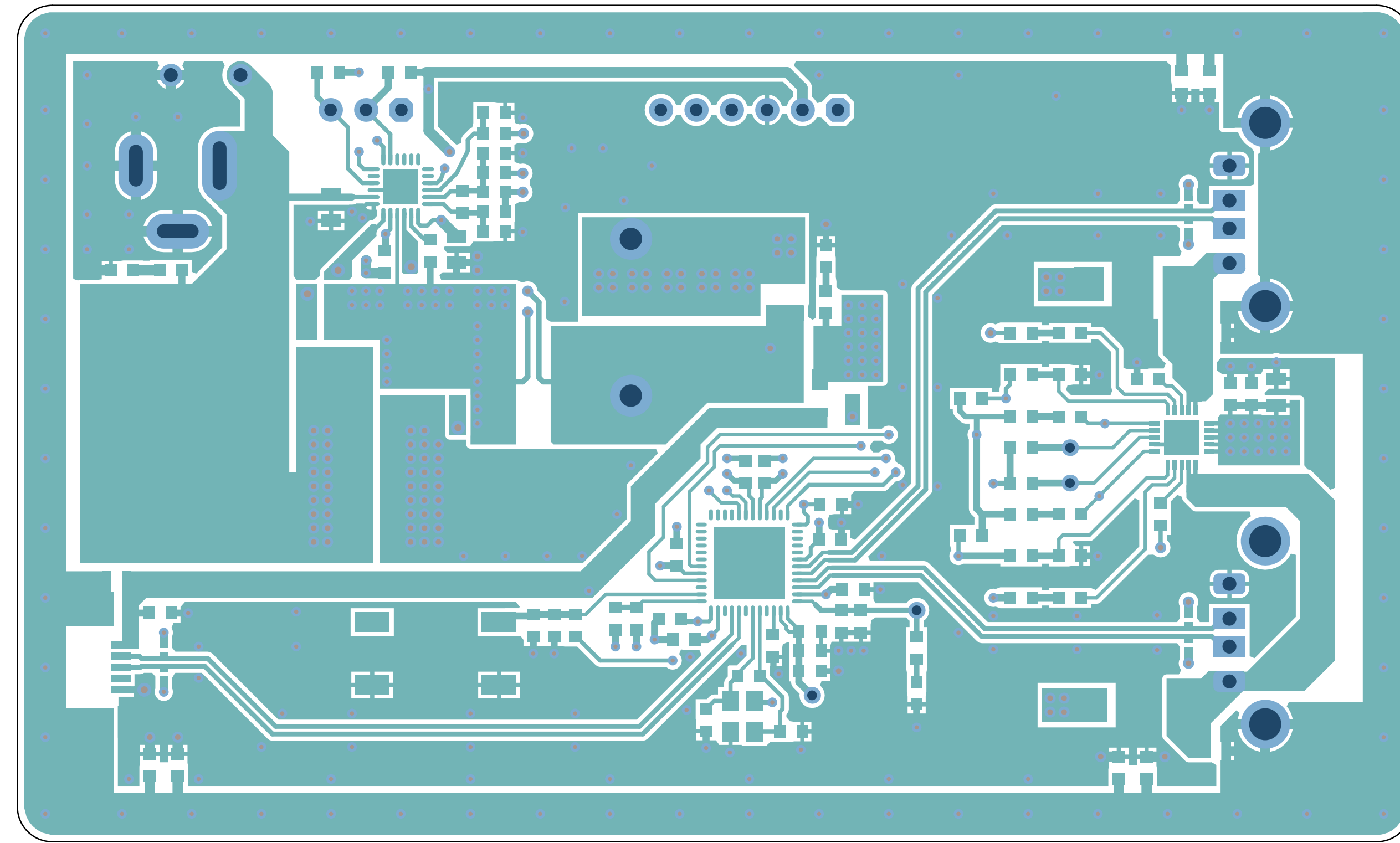


REV	ECO	Comments	Date

 MICROCHIP Microchip Technology Inc. 2355 W. Chandler Blvd. Chandler, AZ 85224	TITLE: UCS2112 Eval Board		PART NUMBER: ADM00639
	PCB DESIGNER: Adrian Toader	GERBER FILE: TOP Copper & Silk	
	ENGINEER: Adrian Toader	BOARD NUMBER: 04-10367	DATE: 8/26/2015
	PCB FILE NAME: 04-10367-R3.PcbDoc	LAYER NAME: Top Overlay	REV: 3

1 2 3 4 5 6

REV	ECO	Comments	Date



A

A

B

B


C

C

D

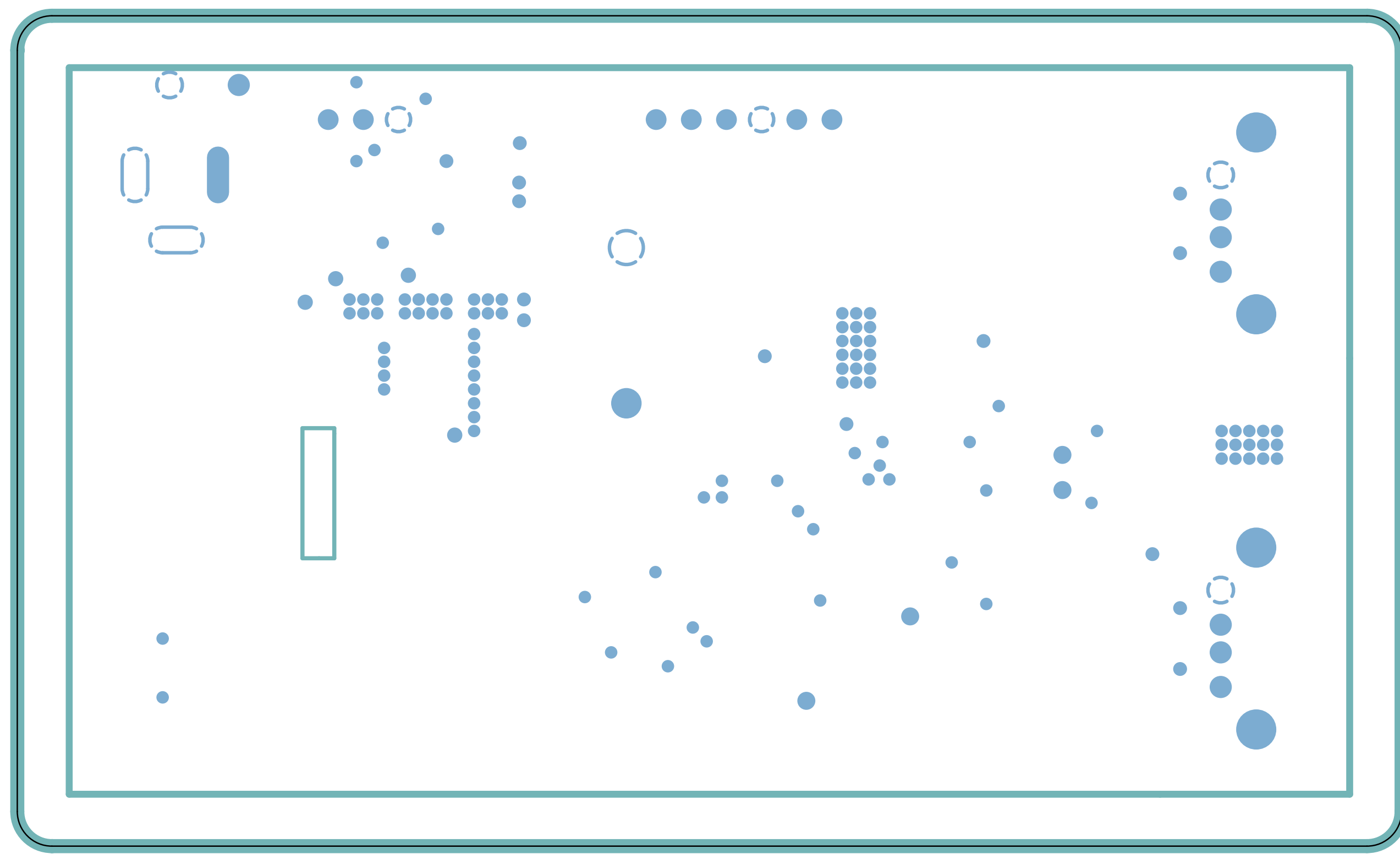
D

1 2 3 4 5 6

 MICROCHIP Microchip Technology Inc. 2355 W. Chandler Blvd. Chandler, AZ 85224	TITLE: UCS2112 Eval Board		PART NUMBER: ADM00639
	PCB DESIGNER: Adrian Toader	GERBER FILE: TOP Copper	
	ENGINEER: Adrian Toader	BOARD NUMBER: 04-10367	DATE: 8/26/2015
	PCB FILE NAME: 04-10367-R3.PcbDoc	LAYER NAME: M2: BOARD	REV: 3

1 2 3 4 5 6

REV	ECO	Comments	Date



A

A

B

B


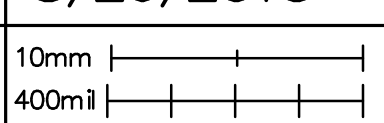
C

C

D

D

1 2 3 4 5 6

 MICROCHIP Microchip Technology Inc. 2355 W. Chandler Blvd. Chandler, AZ 85224	TITLE: UCS2112 Eval Board		PART NUMBER: ADM00639		
	PCB DESIGNER: Adrian Toader		GERBER FILE: Inner 1 - GND		
	ENGINEER: Adrian Toader		BOARD NUMBER: 04-10367	DATE: 8/26/2015	
	PCB FILE NAME: 04-10367-R3.PcbDoc		LAYER NAME: M2 BOARD	REV: 3	

1 2 3 4 5 6

REV	ECO	Comments	Date

A

B

C

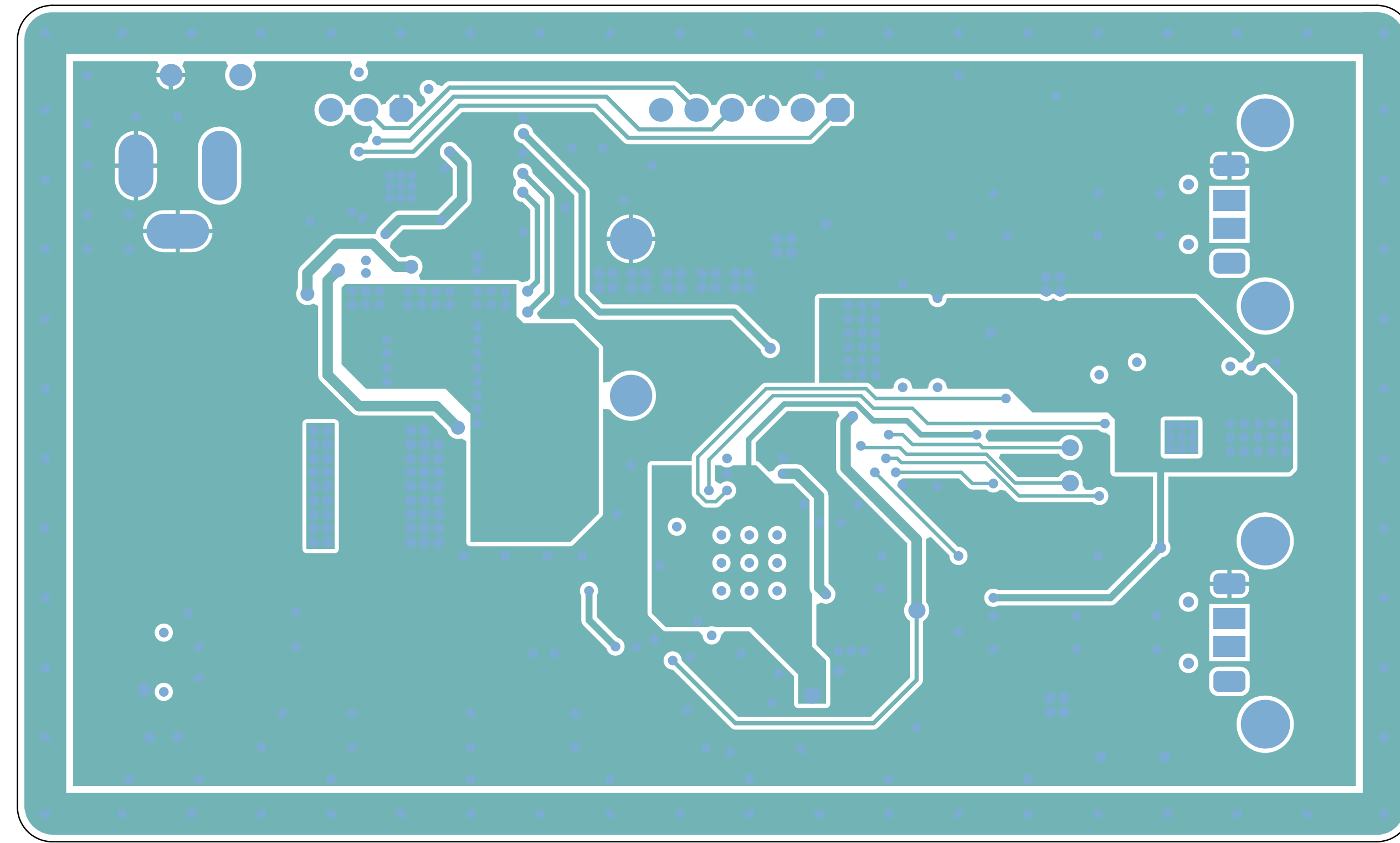
D


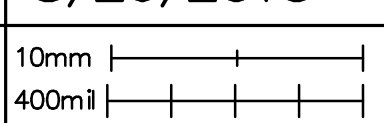
A

B

C

D



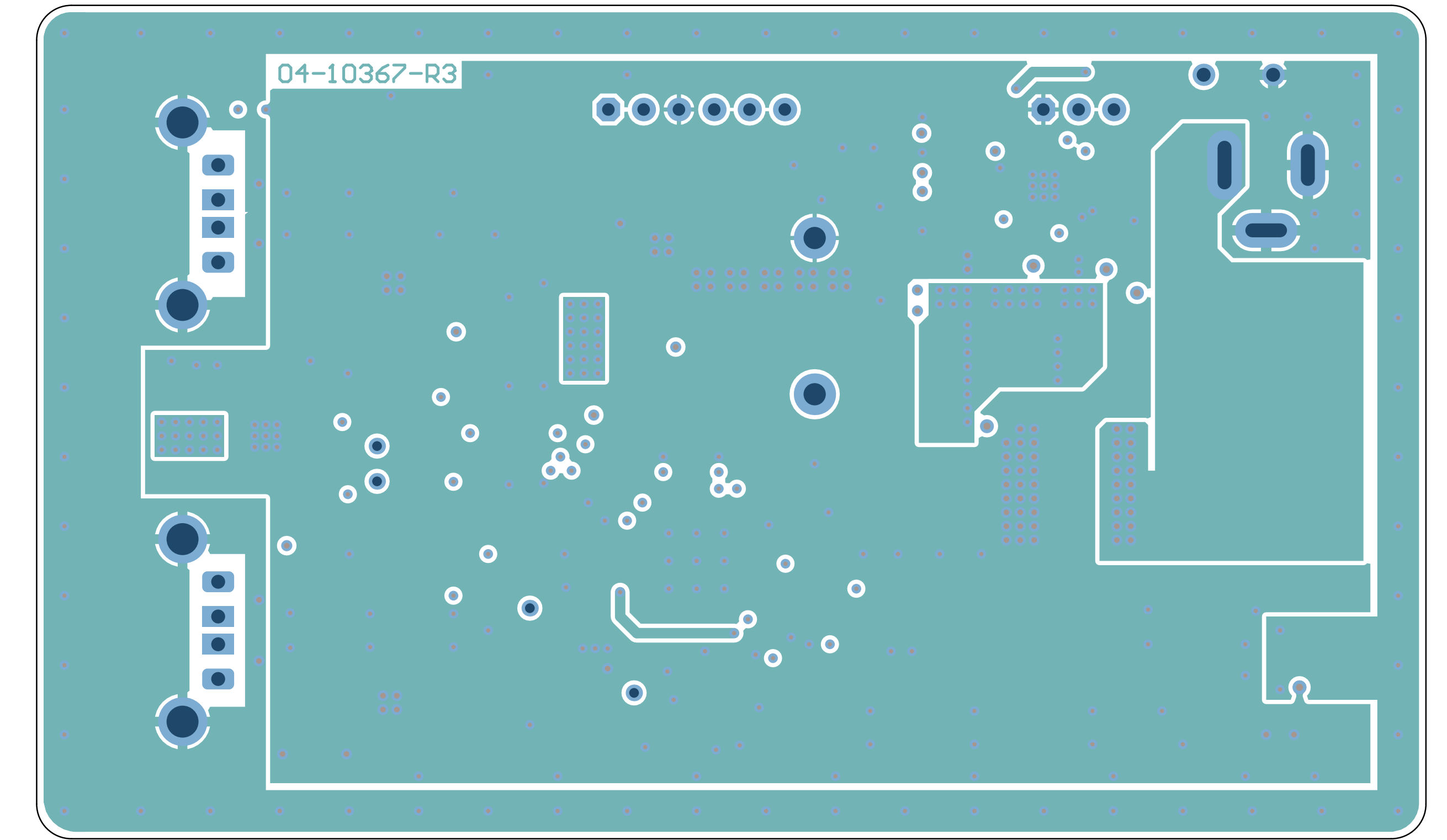
 MICROCHIP Microchip Technology Inc. 2355 W. Chandler Blvd. Chandler, AZ 85224	TITLE: UCS2112 Eval Board		PART NUMBER: ADM00639	
	PCB DESIGNER: Adrian Toader	GERBER FILE: Inner 2 - Signal		
	ENGINEER: Adrian Toader	BOARD NUMBER: 04-10367	DATE: 8/26/2015	
	PCB FILE NAME: 04-10367-R3.PcbDoc	LAYER NAME: M2 BOARD	REV: 3	

1 2 3 4 5 6

1 2 3 4 5 6

A

A



B

B

C

C


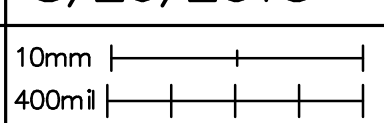
D

D

3

MS:BOARD

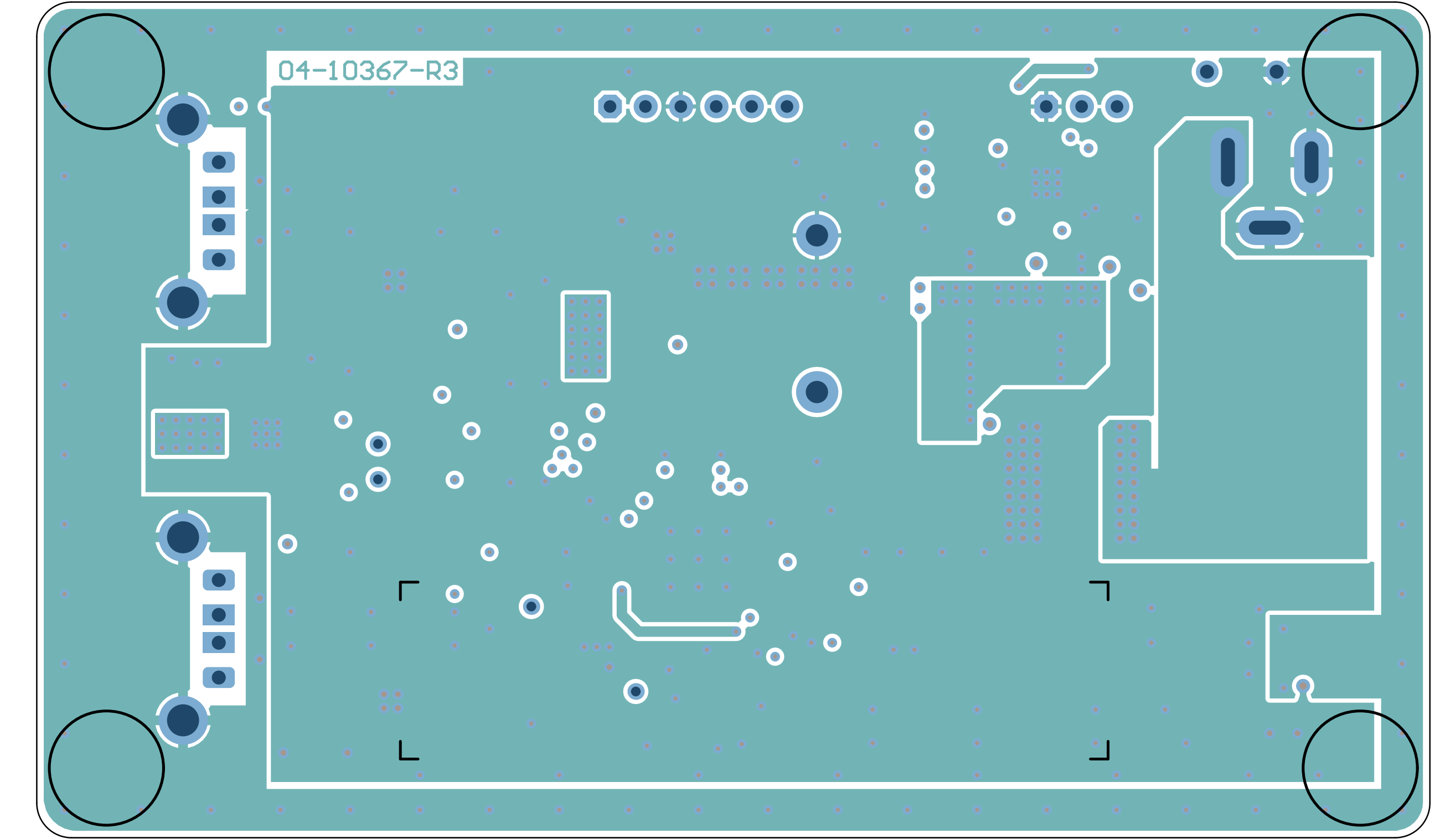
1 2 3 4 5 6

 MICROCHIP Microchip Technology Inc. 2355 W. Chandler Blvd. Chandler, AZ 85224	TITLE: UCS2112 Eval Board		PART NUMBER: ADM00639
	PCB DESIGNER: Adrian Toader	GERBER FILE: BOTTOM Copper	
	ENGINEER: Adrian Toader	BOARD NUMBER: 04-10367	DATE: 8/26/2015
	PCB FILE NAME: 04-10367-R3.PcbDoc	LAYER NAME:	REV: 

1 2 3 4 5 6

A

A



B

B


C

C

D

D

04-10367-R3

 MICROCHIP Microchip Technology Inc. 2355 W. Chandler Blvd. Chandler, AZ 85224	TITLE: UCS2112 Eval Board		PART NUMBER: ADM00639
	PCB DESIGNER: Adrian Toader	GERBER FILE: Bottom Copper & Silk	
	ENGINEER: Adrian Toader	BOARD NUMBER: 04-10367	DATE: 8/26/2015
	PCB FILE NAME: 04-10367-R3.PcbDoc	LAYER NAME:	REV:

1 2 3 4 5 6

1

2

3

4

5

6

A

A

B

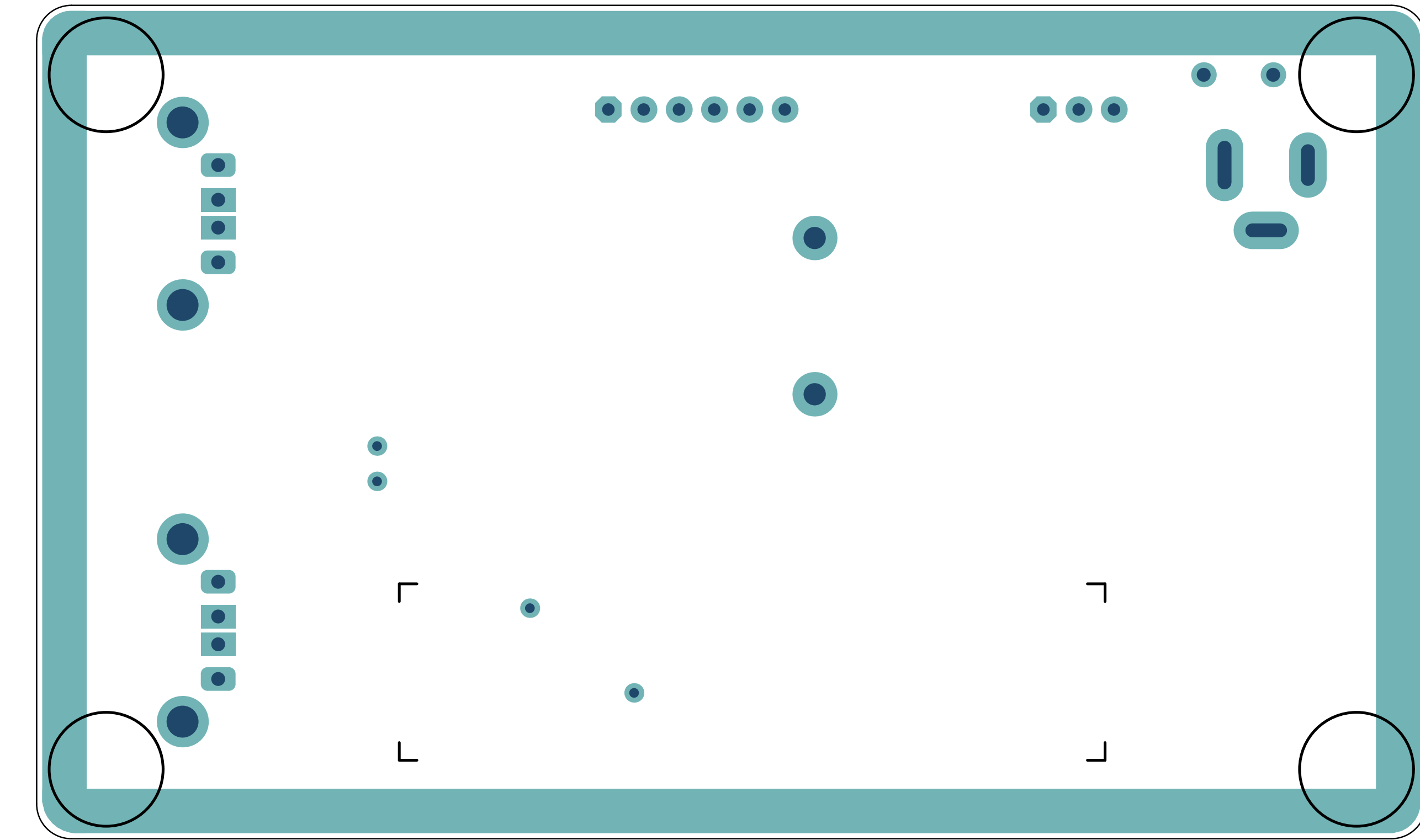
B


C

C

D

D



 MICROCHIP Microchip Technology Inc. 2355 W. Chandler Blvd. Chandler, AZ 85224	TITLE: UCS2112 Eval Board		PART NUMBER: ADM00639
	PCB DESIGNER: Adrian Toader	GERBER FILE: BOTTOM Silk	
	ENGINEER: Adrian Toader	BOARD NUMBER: 04-10367	DATE: 8/26/2015
	PCB FILE NAME: 04-10367-R3.PcbDoc	LAYER NAME:	REV:

ε

04-10367-R3

1

2

3

4

5

6

