

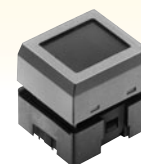
# Change Notice

## IS Series

### Change of LCD of SmartSwitch 36 x 24 Switches (Blue Mode)

Type of Change:

- Engineering     Part Number  
 Product         Appearance



LCD change for IS Series standard size LCD 36 x 24 Switches with Blue Mode to improve temperature range and display capabilities.

**This change will affect the following products including all custom products, easy display kit.**

IS15ABDP4E, IS15ABDP4EG, IS15ABDP4B

Change of LCD		
	Before Change	After Change
Outer Shape	<p style="text-align: center;">Pixel Detail</p>	<p style="text-align: center;">Pixel Detail</p>
Operating Temp	0 ~ +40°C	-20 ~ +60°C
Storage Temp	-10 ~ +60°C	-30 ~ +70°C
Operating Voltage	7.5V	7.3V
Handling	Solder profile: 270°C max. for 5 seconds max. When soldering take caution that temperature at the LCD does not exceed 60°C. These products are not process sealed.	<b>LCD Temp Characteristics</b> The contrast and speed of LCDs decrease in environments under 0°C. When operating at temperatures above 60°C the LCD can darken.
		Solder profile: 270°C max. for 5 seconds max. When soldering take caution that temperature at the LCD does not exceed 70°C. These products are not process sealed.

### Availability

Change will be effective with September 2011 production.

**NKK**  
SWITCHES

www.nkkswitches.com  
1.877.2BUYNKK (228.9655)

7850 East Gelding Drive • Scottsdale, AZ 85260  
Telephone 480.991.0942 • Fax 480.998.1435