

Change Notice

YB Series

Changes for YB Spot Illuminated Pushbutton with 24-Volt Amber LED & Resistor

Type of Change:

- Engineering Part Number
 Product Appearance

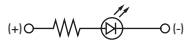
The YB Series pushbutton switches with spot illumination and 24-volt amber LED and resistor will be changing. The revision will *not* effect current electrical specifications, which are displayed on the following table.

Standard and custom YB pushbuttons with 24-volt amber LEDs and resistor are included in the change, and part numbers for effected standard assemblies are shown on the table below at right. The assembly consists of spot illuminated cap, built-in 24V amber LED and resistor.



YB Series Spot Illuminated with 24V Amber LED and Resistor

SPECIFICATIONS FOR 24V AMBER LED WITH RESISTOR



The electrical specifications shown are determined at a basic temperature of 25°C. The LED is an integral part of the switch and not available separately.

Amber **1D**

24 With Resistor

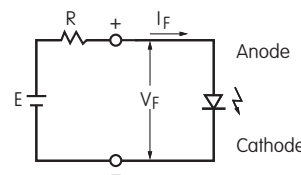
Maximum Forward Current	I_{FM}	12mA
Typical Forward Current	I_F	10mA
Forward Voltage	V_F	24V
Maximum Reverse Voltage	V_{RM}	5V
Current Reduction Rate Above 25°C	ΔI_F	—
Ambient Temperature Range		-25° ~ +50°C

Notes

- The LED circuit is isolated and requires an external power source.
- For best results and safe use of the LEDs, the supply voltage should be more than the LED forward voltage. In addition, an appropriately valued ballast resistor should be used. Without the ballast resistor, the LED will be damaged or destroyed. The resistor value can be calculated by using the formula shown here.
- There are no changes to the switches' external dimensions.
- Contact information is below if more details are needed.

EFFECTED STANDARD PART NUMBERS

PART NUMBER	CAP SHAPE
AT3010D24JA	Square
AT3010D24JB	Square
AT3010D24JC	Square
AT3010D24JE	Square
AT3010D24JF	Square
AT3011D24JA	Round
AT3011D24JB	Round
AT3011D24JC	Round
AT3011D24JE	Round
AT3011D24JF	Round
AT3012D24JA	Rectangular
AT3012D24JB	Rectangular
AT3012D24JC	Rectangular
AT3012D24JE	Rectangular
AT3012D24JF	Rectangular



$$R = \frac{E - V_F}{I_F}$$

Where: R = Resistor Value (Ohms)
 E = Source Voltage (V)
 V_F = Forward Voltage (V)
 I_F = Forward Current (A)

Effective Date

Changes for YB Series spot illuminated pushbuttons with 24V amber LED and resistor will be effective June 2022.

NKK
SWITCHES

www.nkkswitches.com • 1.877.2BUYNKK (228.9655)

7850 East Gelding Drive • Scottsdale, AZ 85260 • Telephone 480.991.0942 • Fax 480.998.1435