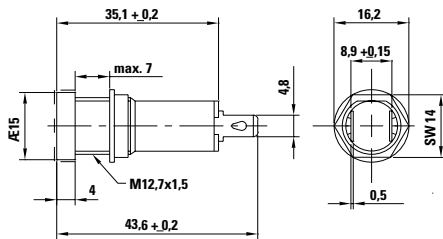


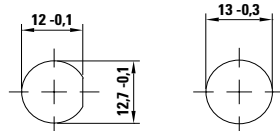
870 Series Medical Grade Shock-Safe Holder for 5x20mm Fuses



Dimensions 870



Includes Captive Cap



Panel alternatives

Product Characteristics 870

Compatible Fuses	For Shocksafe, Medical Grade, 5x20mm fuses
Materials	Holder/Cap: Black Thermoplastic, UL 94V0 Metal Parts: Copper alloy, corrosion protected Terminals: Solderable, tinned
Electrical Data (23°C)	Rated Voltage: 250V Rated Current: 10A Rated Power: 1.6W (VDE)
Mounting	12.7mm diameter D-hole or 13mm round hole Admissible torque on plastic hex nut is 1.2Nm
Terminals	Solderable or 4.8mm quick connect-fits 0.5mm tab
Protection Class & Category	IP 40 (IEC 60529) PC3 (IEC 60127-6) Live parts are fully inaccessible to a 1mm diameter probe
Operating Temperature	-40°C to +85°C
Climatic Test	-40°C/+85°C/21 days (IEC 60068-2-1...3)
Stock Conditions	0°C to 60°C, max. 70% R.H.
Contact Resistance	≤ 5mΩ at 20 mV
Impulse Voltage	4 kV, 50Hz, 1 min., dry
Insulation Resistance	> 10 ³ MΩ (500VDC, 1 min.)
Solderability	350°C, 2 sec. acc. to IEC 60068-2-20, Test Ta method 2
Soldering Heat Resistance	350°C, 10 sec. (IEC 60068-2-20) acc. to IEC 60068-2-20, Test Tb, method 2
Minimum Cross Section	Conductor - 2.5mm ²
Marking	870, 250V, Agency Approvals
Unit Weight	5.6g

Refer to [Fuseology](#) for information on proper fuseholder re-rating.

Additional Information



Datasheet



Resources



Samples

Agency Approvals

Agency	Agency File Number
	40003282
	E70164

Ordering Information

Ordering Number	Packaging
87000001009	Bulk 100 Pcs