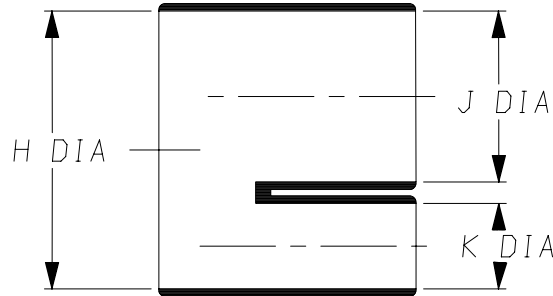
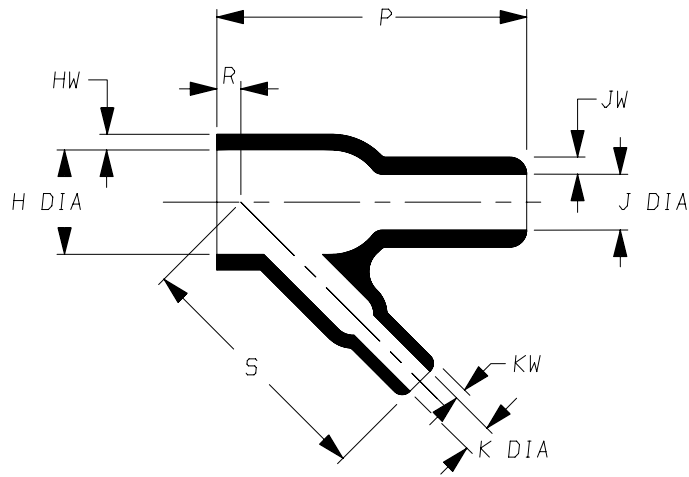


a) Part as supplied

342A012-\*G03



b) Part after unrestricted recovery.



**DIMENSIONS** in millimetres  
{in inches, for reference}

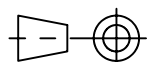
Part Number	H		J		K		P	R	S	HW	JW	KW
	Min	Max	Min	Max	Min	Max	±10%	±10%	±10%	±20%	±20%	±20%
	a	b	a	b	a	b	b	b	b	b	b	b
342A012-*G03	13 {0.51}	9.5 {0.37}	13 {0.51}	6.9 {0.27}	7.0 {0.28}	3.6 {0.14}	29 {1.14}	3.0 {0.12}	23 {0.91}	1.5 {0.06}	1.5 {0.06}	1.0 {0.04}
		#					#	#				

This is a trimmed variant  
Modified dimensions are shown thus:- #

**Copyright (!)**

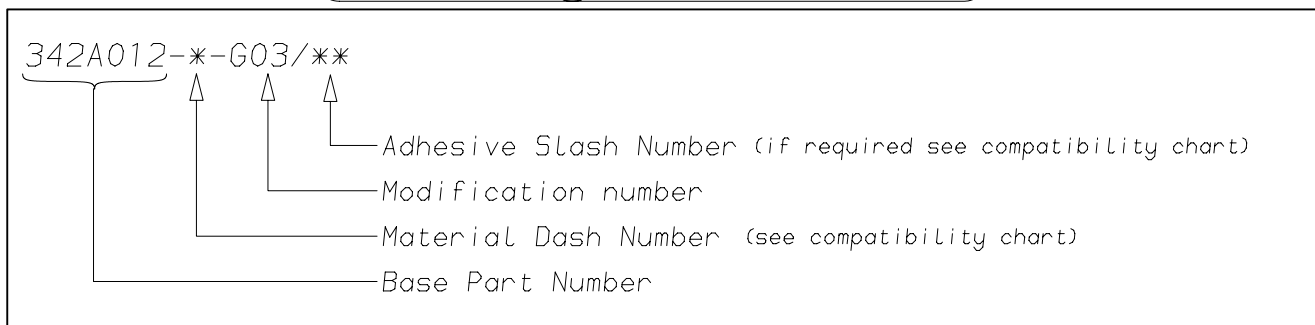
The copyright in this drawing is the property of Tyco Electronics UK Ltd. The drawing is issued on the condition that it is not copied, reproduced or disclosed to a third party, either in whole or in part without the prior written consent of Tyco Electronics UK Ltd.

Drawn A.LILLEY. Checked Issue 3 Date November 2006 Conforms to ISO Recommendations  
Approval Design MKTG. Q.A. 3rd Angle Projection Not to Scale



<b>Raychem</b>		<b>Specification Control Drawing</b>	Part Number <b>342A012-*G03 Issue 3</b>
Iss.	Date	E.C.R. No.	Details of Change
2	October 1992	H0119	P was 3.0, R was 29
3	November 2006	CR06-DM-104	-12 Material description name changed
3	November 2006	CR06-HM-012	Imperial dimensions added

### (Ordering Information)



### (COMPATIBILITY CHART)

Material Dash Number	Material Description	SPEC Number	Coating Slash Number
-3	POLYOLEFIN, SEMI-RIGID	RT-301, RK-6703	/42, /86, /180
-4	POLYOLEFIN, FLEXIBLE	RT-1304 RT-1050	/42, /86, /180
-6	SILICON	RT-602, RK-6706	N/A
-12	FLUOROELASTOMER, FLEXIBLE	RT-1312, RW-2071	/225
-25	ELASTOMER, FLUID RESISTANT	RT-1325, RK-6713	/42, /86, /225
-100	ZERO HALOGEN	RT-1323, RK-6717	/86, /180
-130	POLYOLEFIN, COMMERCIAL FLEXIBLE	RW-2008	/42

#### NOTES

- ① As supplied dimensions are for uncoated parts, when coating is added entry diameters will reduce by 1.5mm Max.

Tyco Electronics UK Ltd. Faraday Road, Swindon, Wiltshire, SN3 5HH England Telephone: (01793) 528171 Fax: 572516	Tyco Electronics Corporation 300, Constitution Drive, Menlo Park, CA 94025 USA Telephone (650) 361-3860 Fax: (650) 361-5579
Cage Code K1010	Cage Code 06090