

## Type YP Series

### Key Features

Flameproof  
Silicone Coating

Stainless Steel  
Mounting  
Terminals For  
Direct Mounting  
On Capacitors

Premium Quality  
Resistive Wires

Custom Designs  
Possible

Innovative Design



The YP series resistors are coated with multilayer silicone to give an excellent protection to the resistance wire at temperatures from -55°C to 350°C. The terminals are designed for quick and easy mounting on capacitors and have a mounting pitch of 22 and 31.8 mm.

These are wirewound ceramic core resistors designed for voltage balancing of series connected aluminium electrolytic capacitors. These resistors are also suitable for capacitor voltage discharge safety applications in high voltage circuits. Ideally suited for industrial grade capacitors.

### Characteristics – Electrical

Type	Power Rating @70°C	Limiting Voltage	Resistance Range	TCR* (PPM/°c)
YP8	8.5	685V	1R0 – 82K	±100
YP10	11	940V	1R0 – 120K	±100

\*TCR ±30PPM on request

Operating Temperature range -55 ~ 200°C

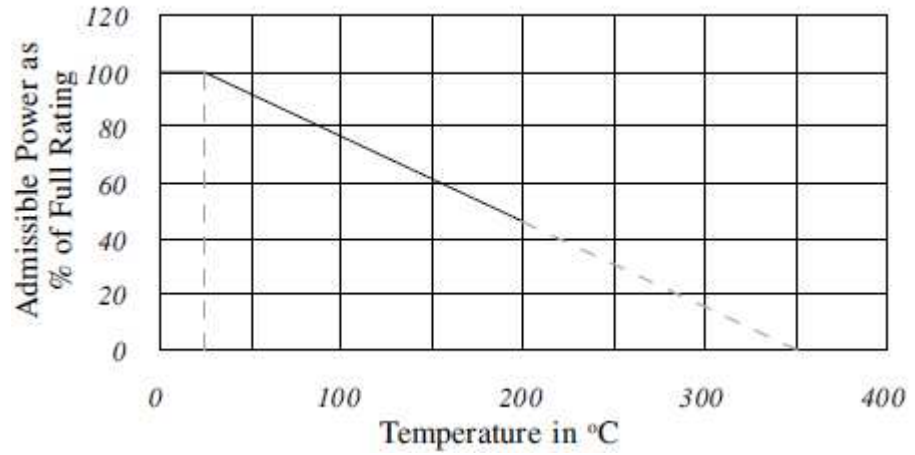
Climatic Category 55/200/56

### Environmental Characteristics

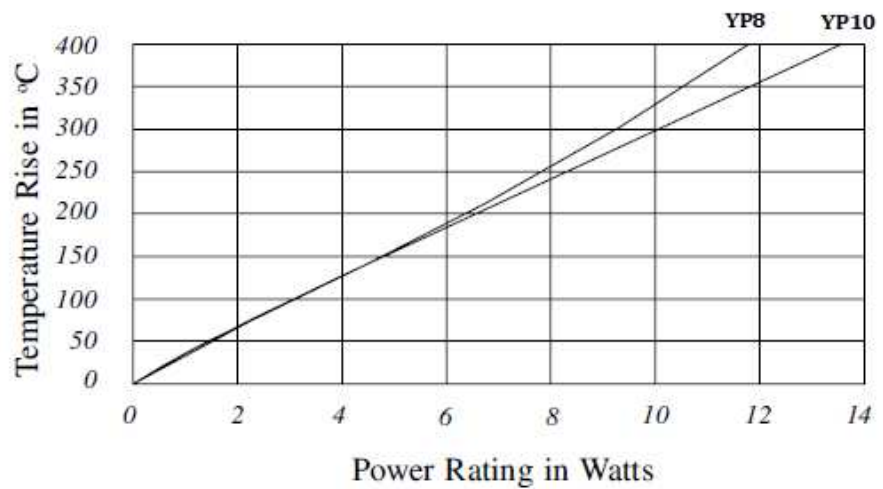
Characteristics	Standards	Test Methods
Endurance at Rated Temperature	$\Delta R < 5\% + 0R05$	Full Rated Power for 1000hrs, (1.5hrs ON, 0.5hrs OFF) at 25°C
Short Term Overload	$\Delta R < 2\% + 0R05$	10 x Rated Power for 5 secs, IEC115-1, Clause 4.1.3
Damp Heat Steady State	$\Delta R < 5\% + 0R05$	90-95% RH, 40°C, 56 days, IEC 115-1, clause 4.17.3
Climatic Sequence	$\Delta R < 5\% + 0R05$	As per IEC 115-1, Clause 4.23
Solderability		Not applicable, Resistor is Designed for Screw Mounting Only
Terminal Strength	$\Delta R < 0.5\% + 0R05$	25 N Pull Test for 10 Seconds, IEC 1151-1, Clause 4.16

### Derating Curve

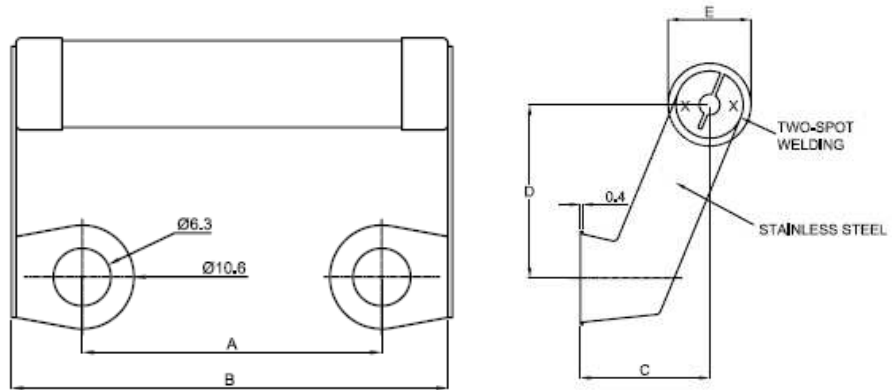
The Derating Curve specifies the maximum allowable power at a particular ambient temperature while ensuring that the maximum surface temperature remains within the designated limit.



### Temperature Rise Graph



### Dimensions



Type	Dimension				
	A ±1mm	B max.	C ±1mm	D ±1mm	E ±1mm
YP8	22	40	15	21	9.5
YP10	31.8	50	15	21	9.5

### Application Notes

Where the resistor is subject to a pulse load, please ensure that the average power dissipated remains below the rated power specified.

Resistor performance with pulse loads should be fully application tested prior to use.

### How To Order

YP	8	18K	J
Common Part	Power Rating	Resistance Value	Tolerance
YP – Capacitor Discharging Resistor	8-8 Watts 10-10 Watts	2k (2000 ohms) 2K0 10K (10000 ohms) 10K 18K (18000 ohms) 18K 27K (27000 ohms) 27K 47K (47000 ohms) 47K	F-±1% G-±2% J-±5%