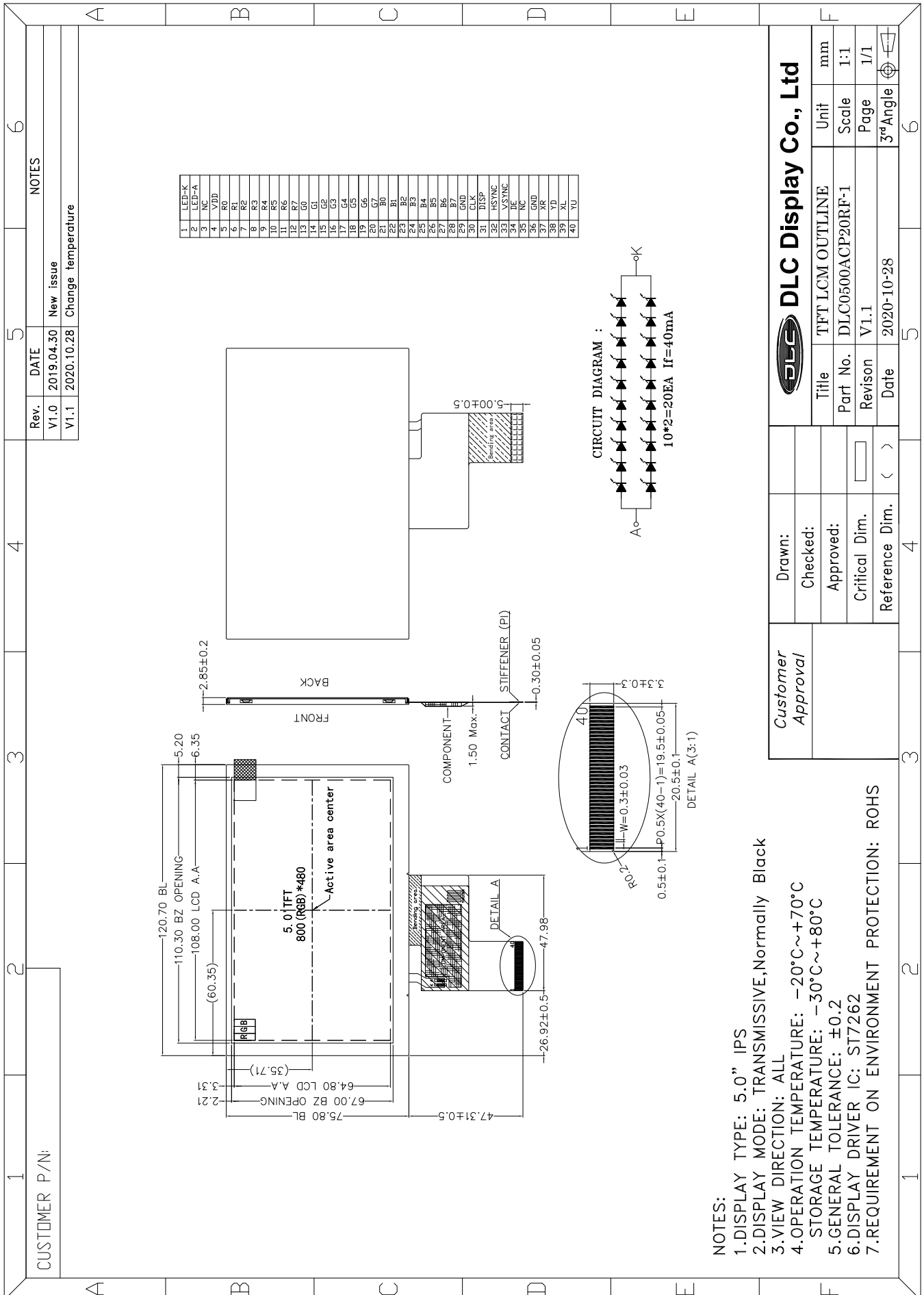


Outline Drawing



NOTES:

- 1.DISPLAY TYPE: 5.0" IPS
- 2.DISPLAY MODE: TRANSMISSIVE, Normally Black
- 3.VIEW DIRECTION: ALL
- 4.OPERATION TEMPERATURE: -20°C~+70°C
- 5.STORAGE TEMPERATURE: -30°C~+80°C
- 6.GENERAL TOLERANCE: ±0.2
- 7.DISPLAY DRIVER IC: ST7262
- 7.REQUIREMENT ON ENVIRONMENT PROTECTION: ROHS

Customer Approval	Drawn:				
	Checked:				
	Approved:				
	Critical Dim.				
	Reference Dim.	( )			
<b>DLC Display Co., Ltd</b>		Title	TFT LCM OUTLINE	Unit	mm
		Part No.	DLC0500ACP20RF-1	Scale	1:1
		Revision	V1.1	Page	1/1
		Date	2020-10-28	3°Angle	