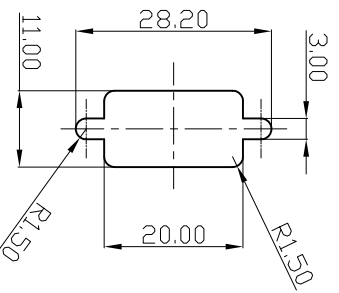


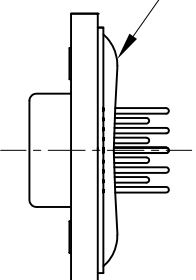
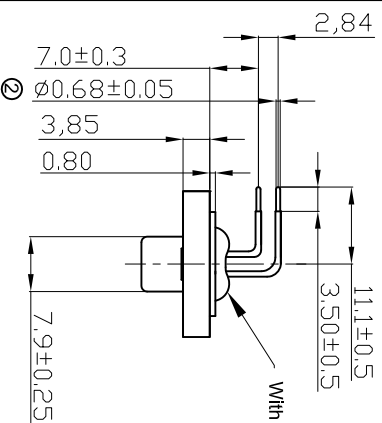
A

Panel Thickness
Screw L=5.0 For Panel Thickness
Under 1.2mm
Screw L=6.0 For Panel Thickness
Between 1.2-2.0mm



D

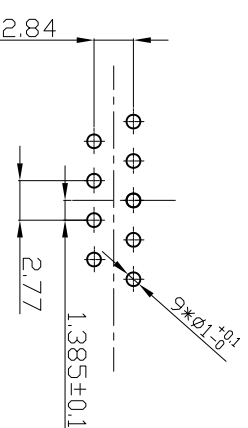
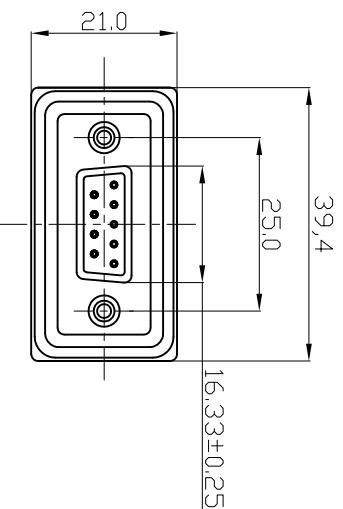
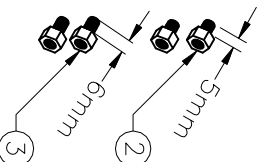
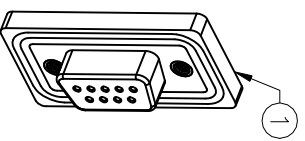
Recommended Panel Cut-Out



NOTES:

MATERIAL

1. Insulator Material: Black, NYLON+G/F
2. Contact Material : Copper Alloy
3. Plating : Gold Plating
4. Waterproof Rate: IP67
5. Do Mating Test After Glued



E

9 Pin Female Connector
PCB Pin Layout
Scale 2:1

F

ROHS compliant

Scale	1:1
TOLERANCE	
X.X	±0.25
X.XX	±0.10
X.XXX	±0.05
DIM	TOL
ANGLE	±1°
X.X°	±X°
Angle	TOL
Id:	
①	Drawn
②	Cancel LOGO and change dimension
③	Modification
Date	23.01.2018
Name	Tom
Date	17.12.2008
Name	JACK
Date	17.12.2008
Name	JACK
Date	23.01.2018
Name	Amy

ASSMANN
components

Customer-No.
ASSMANN WSW-No.
A-DF 09 AA-WP

Drawing-No.
ASS 3229 CO

Replace
rev02
Sheet

H 1 2 3 4 5 6 7

H G F E D C B A