

ATLANTIC VERSION TERMINATOR INTERFACE ADAPTER	PART NUMBER	REVISION	DESCRIPTION	FEED TYPE
	2151914-1	B	FINE CRIMP HEIGHT ADJUST	MECHANICAL
	2151914-2	B	FINE CRIMP HEIGHT ADJUST	PNEUMATIC
	2151914-5	B	FINE CRIMP HEIGHT ADJUST	SERVO LATCH PLATE
	2151914-6	B	NON-CRIMP HEIGHT ADJUST	SERVO LATCH PLATE
	2151914-7	B	FINE CRIMP HEIGHT ADJUST	NONE
	7-2151914-7	A	CRIMP TOOLING KIT	-

APPLICATOR DATA		
CRIMP	SIZE	TYPE
WIRE	3.82 mm [1.50]	SP
INSUL	-	-

APPLICATOR INSTRUCTIONS
408-10389

TERMINAL DATA: SUMIKOU TECH TERMINAL SEE TABLE CRIMP SPECIFICATION			
TERMINAL NAME: RING TERMINAL			
WIRE STRIP LENGTH		INSULATION DIAMETER RANGE	
N/A		N/A	
TERMINAL APPLICATION SPECIFICATION SEE TABLE BELOW			
TERMINALS APPLIED			
TE TERMINAL	SUMIKOU TECH TERMINAL	TE TERMINAL	SUMIKOU TECH TERMINAL
2113330-1	950100-2		

WIRE SIZE	CRIMP HEIGHT mm [INCH]	CRIMP HEIGHT REFERENCE SETTING	WIRE CRIMPER	CRIMP SPECIFICATION
0.75 mm MAG WIRE	1.35+/-0.030 [0.0531+/-0.0012]	4.9	1803102-1	TE ENGINEERING
0.70 mm MAG WIRE	1.30+/-0.030 [0.0512+/-0.0012]	7.1	1803102-1	TE ENGINEERING
0.65 mm MAG WIRE	1.25+/-0.030 [0.0492+/-0.0012]	8.9	1803102-1	SUMIKOU TECH A1834
0.60 mm MAG WIRE	1.20+/-0.025 [0.0472+/-0.0010]	8.7	1803102-2	TE ENGINEERING
0.55 mm MAG WIRE	1.15+/-0.025 [0.0453+/-0.0010]	9.6	1803102-2	SUMIKOU TECH A2268
0.45 mm MAG WIRE	1.08+/-0.025 [0.0425+/-0.0010]	7.9	1803102-3	SUMIKOU TECH A2151

- 1 RECOMMENDED SPARE PARTS
- 2 GREASE BEARING SURFACES LIGHTLY
- 3 LUBRICATE DAILY PER THE APPLICATOR INSTRUCTION SHEET SUPPLIED WITH THE APPLICATOR.
- 4 APPLICATOR SPECIFIC DATA TO BE ENTERED INTO BLANK MEMORY CHIP AT ASSEMBLY. SEE BELOW FOR PART NUMBER:
MECHANICAL FEED WITH "SMART APPLICATOR" CONVERSION: 8-2151914-4
PNEUMATIC FEED WITH "SMART APPLICATOR" CONVERSION: 8-2151914-4
SERVO FEED WITH "FINE CRIMP HEIGHT ADJUST": 8-2151914-5
SERVO FEED WITH "NON-CRIMP HEIGHT ADJUST": 8-2151914-6
- 5. ADJUSTMENT OF THE STRIPPER MAY BE REQUIRED WHEN MOVING THE APPLICATOR BETWEEN BENCH AND LEADMAKER APPLICATIONS.
- 6 APPLY PART NUMBER 1-23419-5 LOCTITE TO THREADS OF ITEM 62. FOR -6 ONLY APPLY PART NUMBER 1-23419-5 LOCTITE TO THREADS OF ITEM 37.
- 7 GREASE THREADS, GROOVE AND O-RING ON ITEMS 35 & 252.
- 8 MAGNET, ITEM 166 MUST BE ORIENTED CORRECTLY IN ORDER TO PROPERLY ACTUATE THE COUNTER.
- 9 CRIMP HEIGHT REFERENCE SETTING WAS THE SETTING USED WHEN THE APPLICATOR WAS QUALIFIED AT THE FACTORY. ADJUSTMENT MAY BE NECESSARY WHEN RUNNING APPLICATOR IN THE FIELD.
- 10 SPARE FEED CAM STORAGE LOCATION REFER TO INSTRUCTION SHEET FOR ADDITIONAL INFORMATION.
- 11 TO CONVERT THE APPLICATOR TO A NON-CARRIER CUTTING STYLE, REMOVE ITEM 13 AND ATTACH TO THE LOCATION ON THE BACK SIDE OF THE HOUSING. REFER TO INSTRUCTION SHEET FOR ADDITIONAL INFORMATION.
- 12 WHEN ASSEMBLING A NON CRIMP HEIGHT ADJUST APPLICATOR (-6) USE SHIMS FROM ITEM 260 TO ACHIEVE A NOMINAL SHIM HEIGHT OF 4.45.
- 13 USE WIRE CRIMPER LISTED IN CHART FOR DESIGNATED MAG WIRE SIZE.
- 14 ITEM NOT SHOWN.

***WARNING**
ON INSTALLATION, SET WIRE DISC, ITEM 40 TO LARGEST WIRE SIZE SETTING. USE OF SETTINGS BELOW MINIMUM REQUIRED CRIMP HEIGHT SETTING WILL CAUSE DAMAGE TO CRIMP TOOLING.

-77	-7	-6	-5	-2	-1	PART NO	DESCRIPTION	ITEM NO
-	-	1	-	-	-	2119957-2	APPLICATOR SHIM PACK	260
1	1	1	1	1	1	1803102-3	CRIMPER, WIRE	255
1	1	1	1	1	1	1803102-2	CRIMPER, WIRE	253
-	1	-	1	1	1	8-21084-0	O-RING, .676 ID, .070 DIA. MAT.	252
-	-	-	-	1	-	2119640-1	PUSH ROD, AIR FEED	250
-	-	-	-	1	-	2079988-1	BUSHING, LCH5-12, MISUMI	249
-	-	-	-	1	-	2119641-1	FEED CAM, AIR FEED	248
-	1	-	1	1	1	2119798-1	DETENT PIN	247
-	1	-	1	1	1	1-22279-3	SPRING, COMPRESSION	246
-	-	1	-	-	-	2119758-1	RAM, AMP STYLE, SIDE FEED, NON-ADJ.	245
-	1	1	1	1	1	7-18023-7	SCR, SKT HD CAP M3 X 4.0	241
-	-	2	2	-	-	2168400-6	SHCS, LOW HEAD, RoHS, M5 X 16	240
-	-	-	-	-	1	2119580-1	MECHANICAL FEED ASSEMBLY	239

ATLANTIC VERSION
Shown on sheets 1 of 4 & 2 of 4
(Pacific version shown on sheets 3 of 4 & 4 of 4)

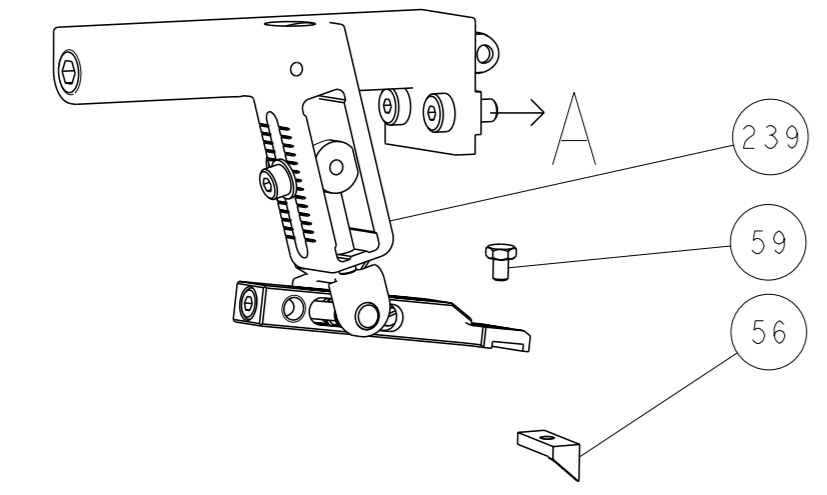
SET UP GAUGE 2119599-1	LOC A	DIST 66	REVISIONS			
			REV	DATE	BY	APPV
			A	RELEASED	11JUN2013	LG TE
			B	ECR-17016812	20NOV2017	FZ KZ

REV	DATE	BY	APPV	DESCRIPTION	ITEM NO	
-	-	-	-	1	2063440-1 AIR FEED MODULE	238
-	1	1	1	1	356885-4 STOP, SHEAR	237
-	-	1	1	-	2119740-2 TAG, IDENTIFICATION	213
-	-	1	1	-	1901094-3 SPACER, FEEDER	198
-	-	1	1	-	1976043-1 PIN, BALL LOCK, THREADED	180
-	-	-	-	2	21045-3 RING, RETAIN, EXTERN, 3/16 CRESCENT	172
-	1	1	1	1	994969-1 MAGNET, RARE EARTH HIGH ENERGY	166
-	REF	REF	REF	REF	994970-2 COUNTER, MAGNETIC	164
-	-	-	-	1	240638-1 SPRING, FEED FINGER	163
-	-	-	-	1	3-23627-7 PIN, RETAIN, GRVD, 3/16 X .854	137
-	-	-	-	1	2119799-1 HOLDER, FEED FINGER, AF	136
-	-	REF	REF	-	SEE NOTE 4 MEMORY CHIP, PROGRAMMED	135
-	-	1	1	-	1633743-1 SERVO FEED LATCH ASM	133
-	1	1	1	1	1-22281-8 SPRING, COMPRESSION	121
-	-	1	1	-	1901092-1 FEED FINGER ASSEMBLY, SF	118
-	1	1	1	1	1-690438-0 FRONT STRIP GUIDE	96
-	2	2	2	2	2168083-1 SCR, SKT HD CAP, RoHS, M3 X 8.0	95
-	1	1	1	1	2168083-6 SCR, SKT HD CAP, RoHS, M5 X 65	93
-	1	1	1	1	455888-5 SPACER, CRIMPER	82
-	1	1	1	1	1-240641-0 SPACER	81
-	1	1	1	1	1962431-2 SPRING, COMPRESSION	77
-	1	1	1	1	1803104-1 WIRE HOLDER	74
-	1	1	1	1	2119956-1 DOCUMENTATION PACKAGE	71
-	1	-	-	1	2119740-1 TAG, IDENTIFICATION	67
-	2	2	2	2	2168078-1 SCREW, DRIVE, RH, RoHS, 2 x .188	66
-	1	-	1	1	2119793-1 LIMITER, ADJUSTMENT BOLT	63
-	3	-	3	3	992763-5 SCR, SET, SOC, CONE PNT, M3 X 4.0	62
-	2	2	2	2	2-18032-5 SCR, SET, FLT PNT, M5 X 20.0	61
-	1	1	1	1	2079383-4 SCR, BHSC, RoHS (M4 X 8)	60
-	-	-	-	1	5-18022-5 SCR, HEX HD CAP, M4 X 6.0	59
-	1	1	1	1	21028-2 PIN, SLOTTED SPRING .062 X .250	58
-	-	-	-	1	1338683-1 FEED PAWL	56
-	4	4	4	4	2168400-1 SHCS, LOW HEAD, RoHS, M4 X 12	54
-	2	2	2	2	2168083-8 SCR, SKT HD CAP, RoHS, M4 X 16	53
-	-	-	-	1	18023-9 SCR, SKT HD CAP M4 X 6.0	49
-	-	-	-	1	2119652-1 FEED CAM, PRE FEED	48
-	-	-	-	1	2119653-1 FEED CAM, POST FEED	47
-	1	1	1	1	2119656-9 APPLICATOR BASIC ASSEMBLY, SF	46
-	1	-	1	1	2119370-1 RAM, AMP STYLE, SIDE FEED	44
-	1	1	1	1	2079383-7 SCR, BHSC, RoHS (M8 X 25)	41
-	1	-	1	1	2119645-1 DISC, NUMBERED FA WIRE ADJUSTMENT	40
-	1	-	1	1	2119957-1 APPLICATOR SHIM PACK	39
-	1	1	1	1	2119644-1 RAM WASHER, PRECISION	38
-	1	1	1	1	2119085-1 FA HEAD, ATLANTIC STYLE	37
-	1	-	1	1	2119092-1 BOLT, ADJUSTMENT	35
-	2	2	2	2	2079383-8 SCR, BHSC, RoHS (M4 X 16)	33
-	1	1	1	1	2161328-1 HEX HEAD, FLANGED, M5 X 8mm LONG	32
-	1	1	1	1	1-1320908-6 SPACER, STRIP GUIDE	30
-	1	1	1	1	1803089-1 PLATE, REAR STRIP GUIDE	29
-	1	1	1	1	2-455888-1 SPACER, CRIMPER	28
-	2	2	2	2	22283-1 SPRING, COMPRESSION	27
-	1	1	1	1	356835-1 LEVER, DRAG RELEASE	26
-	1	1	1	1	240792-1 DRAG, TERMINAL	25
-	1	1	1	1	1633630-2 PLATE, STRIP GUIDE	24
-	2	2	2	2	980371-4 SCR, SKT HD SHLDR 5.0 DIA X 6.0	21
-	1	1	1	1	1803105-1 WIRE STOP	19
-	1	1	1	1	690518-1 HOLD DOWN, TERMINAL	18
-	1	1	1	1	690463-1 FLOATING SHEAR, REAR	17
-	2	2	2	2	1-2168083-1 SCR, SKT HD CAP, RoHS, M3 X 6	16
-	1	1	1	1	690464-1 SHEAR PLATE, REAR	15
-	1	1	1	1	2119862-1 SHEAR HOLDER, REAR	14
-	1	1	1	1	2280441-1 INSERT, SHEAR	13
-	1	1	1	1	3-22280-3 SPRING, COMPRESSION	12
-	1	1	1	1	1803103-1 WIRE GUIDE	10
-	-	-	-	-	-	9
1	1	1	1	1	1-1633933-7 ANVIL, COMBINATION	8
-	-	-	-	-	-	7
-	1	1	1	1	690468-1 DEPRESSOR SHEAR, REAR	6
-	1	1	1	1	2119780-1 DEPRESSOR, SHEAR	5
-	-	-	-	-	-	4
-	-	-	-	-	-	3
-	-	-	-	-	-	2
1	1	1	1	1	1803102-1 CRIMPER, WIRE	1

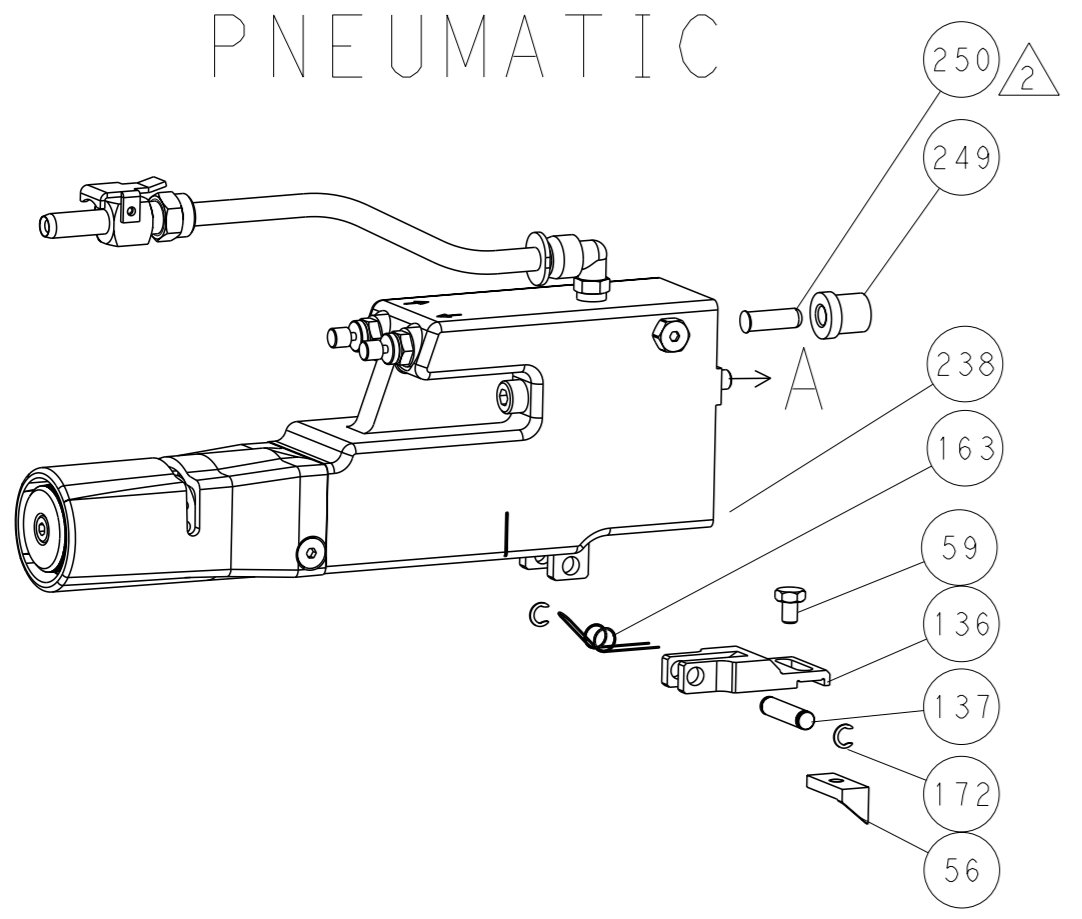
DIMENSIONS:		TOLERANCES UNLESS OTHERWISE SPECIFIED:		OWN R. CLIFFORD 25APR2013	TE Connectivity Harrisburg, PA 17105-3608
mm	0 PLC ±	1 PLC ±	2 PLC ±	CHK T. ELBIN 25APR2013	Ocean Side Feed Applicator
	3 PLC ±	4 PLC ±	5 PLC ±	APPV M. CLIFFORD 25APR2013	
MATERIAL:	FINISH:	WEIGHT:	SCALE:	RESTRICTED TO:	Customer Accessible Production Drawing
			1:2	SIZE: A1	CAGE CODE: 00779
				DRAWING NO: 2151914	REV: B

LOC		DIST		REVISONS			
A	66	P	LYR	DESCRIPTION	DATE	OWN	APVD
		-		SEE SHEET 1			

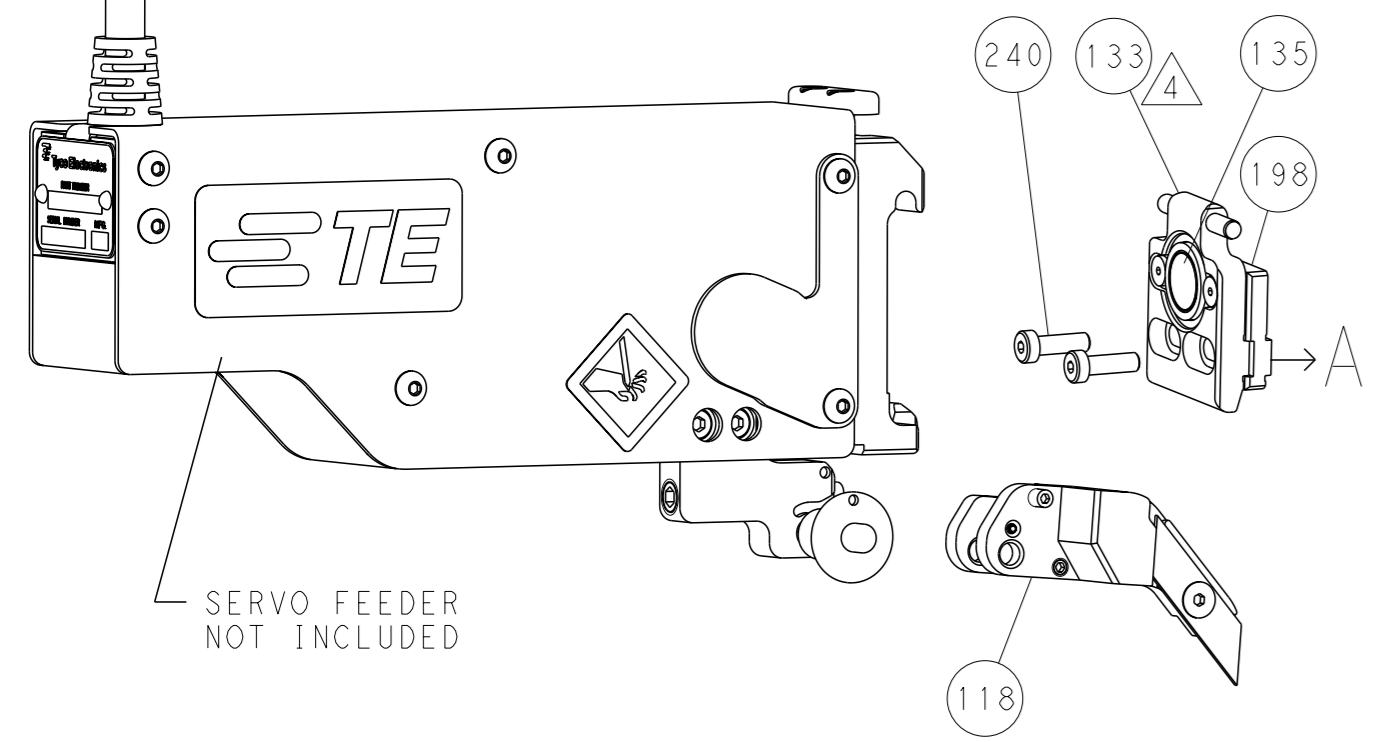
FEED TYPE MECHANICAL



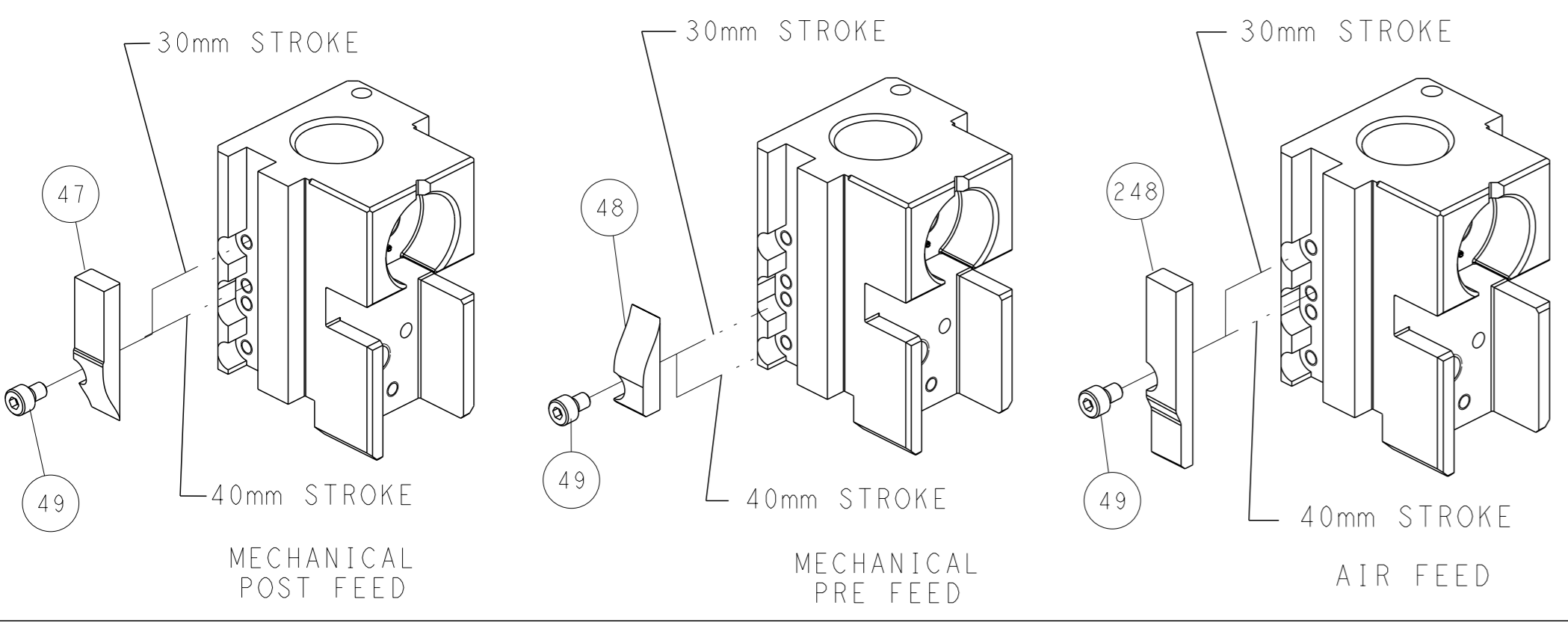
PNEUMATIC



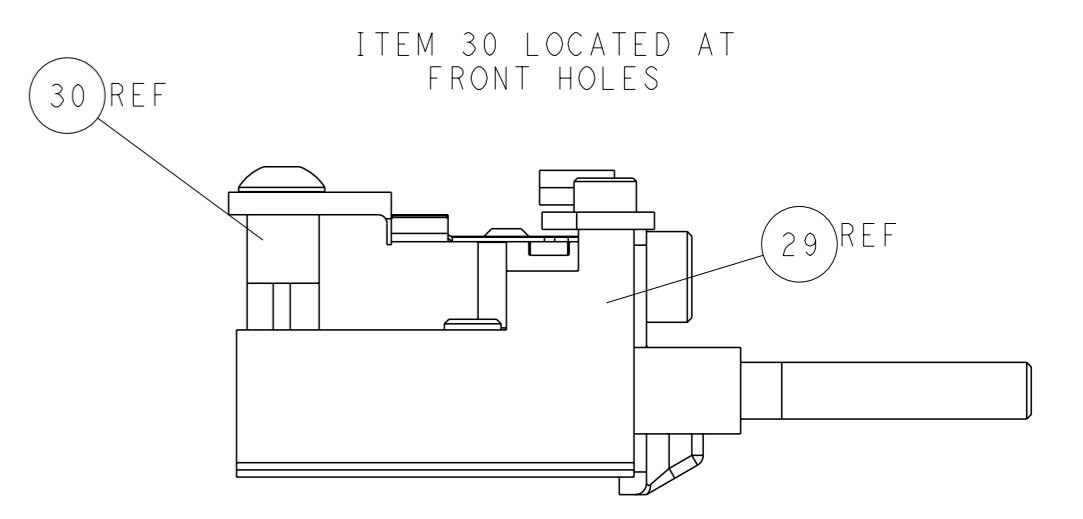
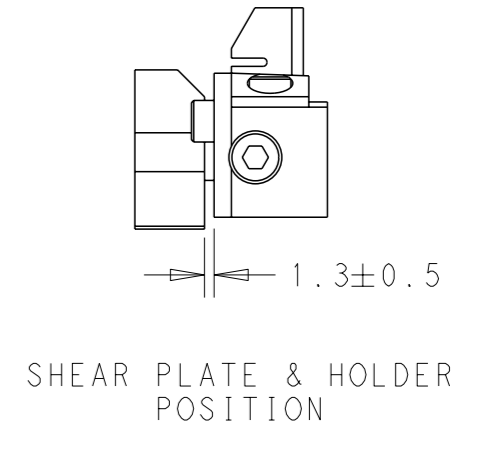
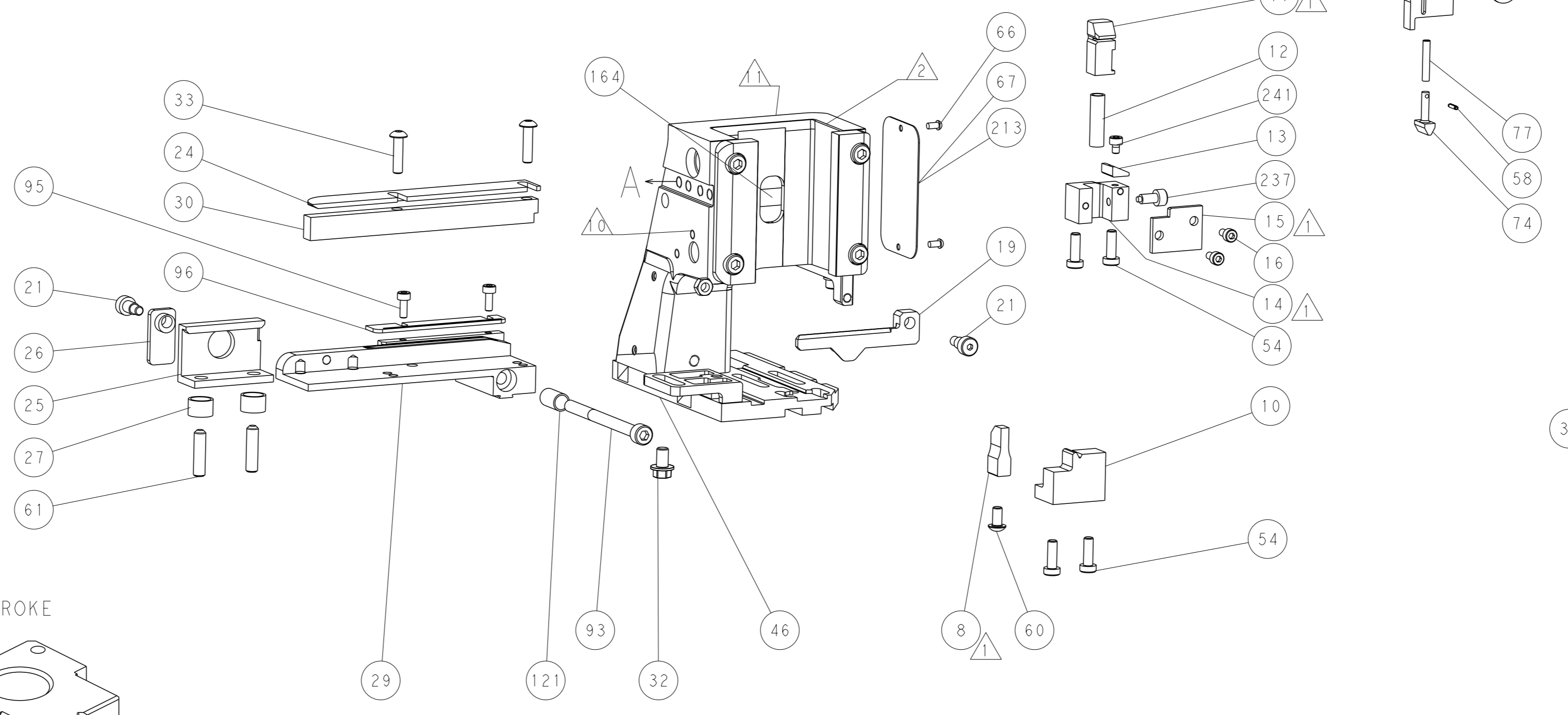
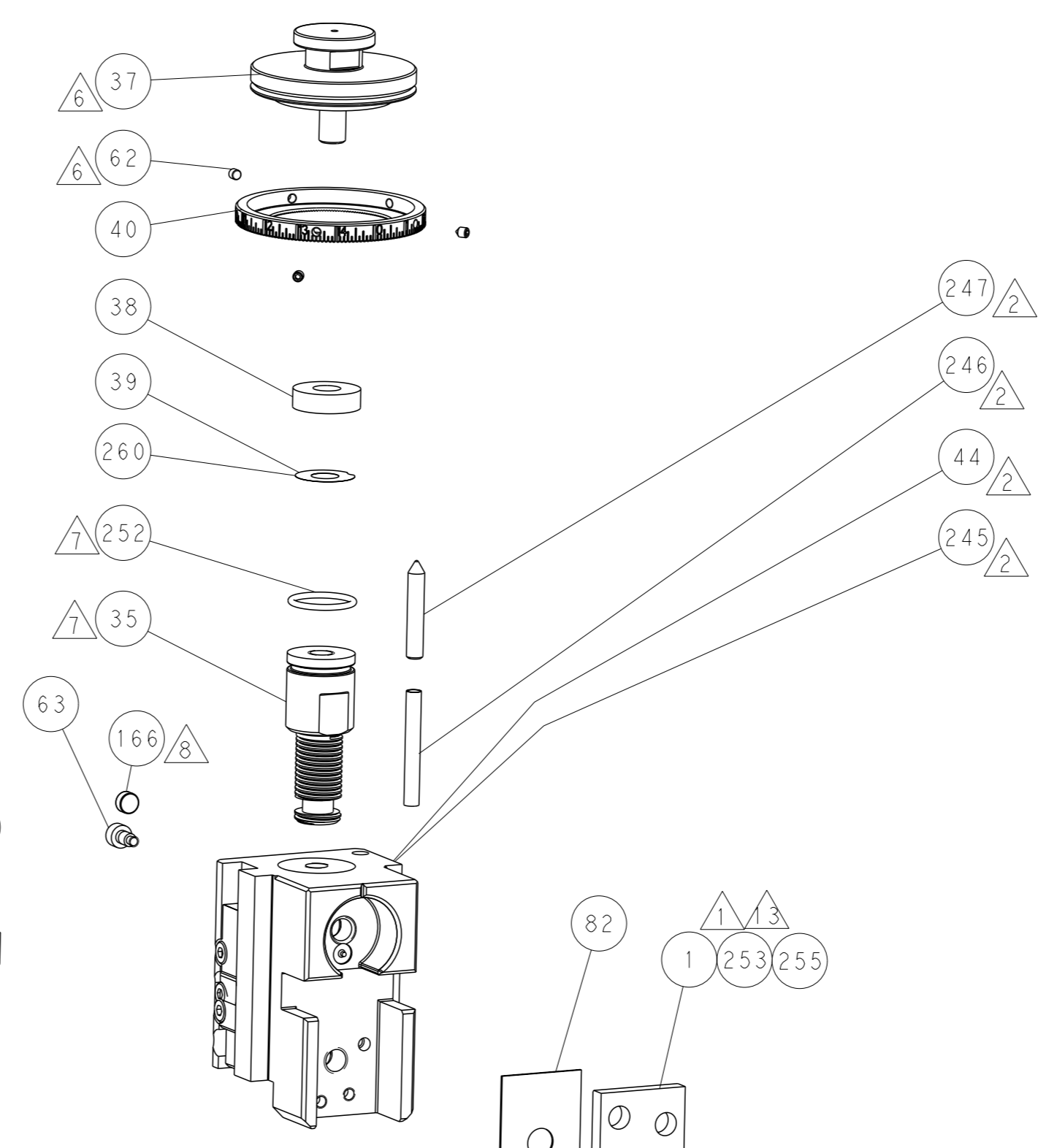
SERVO LATCH PLATE



CAM POSITIONS



ATLANTIC VERSION
 Shown on sheets 1 of 4 & 2 of 4
 (Pacific version shown on sheets 3 of 4 & 4 of 4)



DIMENSIONS: mm 		TOLERANCES UNLESS OTHERWISE SPECIFIED: 0 PLC ± 1 PLC ± 2 PLC ± 3 PLC ± 4 PLC ± ANGLES ° ±		OWN: R. CLIFFORD 25APR2013 CHK: T. ELBIN 25APR2013 APVD: M. CLIFFORD 25APR2013 PRODUCT SPEC: - APPLICATION SPEC: - WEIGHT: - MATERIAL: -		NAME: Ocean Side Feed Applicator SIZE: A1 CAGE CODE: 00779 DRAWING NO: C=2151914 SCALE: 1:2 SHEET: 2 of 4 REV: B		RESTRICTED TO: - CUSTOMER ACCESSIBLE PRODUCTION DRAWING	
--------------------	--	---	--	--	--	--	--	--	--

PACIFIC VERSION TERMINATOR INTERFACE ADAPTER	PART NUMBER	REVISION	DESCRIPTION	FEED TYPE	APPLICATOR STYLE CONVERSION CHART							
					CONVERT TO	PART NUMBERS REQUIRED						
	2-2151914-1	B	FINE CRIMP HEIGHT ADJUST	MECHANICAL	PNEUMATIC FEED	2119950-1	1338685-1	5-18022-5	2119641-2	2119799-1	2063440-1	
	2-2151914-2	B	FINE CRIMP HEIGHT ADJUST	PNEUMATIC	SERVO LATCH PLATE	2119951-1	1901092-1	8-2151914-5	1901094-3	1-1752354-1	2168400-6 (QUANTITY 2)	
					SMART APPLICATOR	2161326-1	-	8-2151914-4	-	-	-	
					MECHANICAL FEED	2119949-1	1338685-1	5-18022-5	2119653-2	-	-	
	2-2151914-5	B	FINE CRIMP HEIGHT ADJUST	SERVO LATCH PLATE	SERVO LATCH PLATE	2119951-1	1901092-1	8-2151914-5	1901094-3	1-1752354-1	2168400-6 (QUANTITY 2)	
SMART APPLICATOR					2161326-1	-	8-2151914-4	-	-	-		
2-2151914-7	B	FINE CRIMP HEIGHT ADJUST	NONE		-	-	-	-	-	-	-	
7-2151914-7	A	CRIMP TOOLING KIT	-		-	-	-	-	-	-	-	

APPLICATOR DATA		
CRIMP	SIZE	TYPE
WIRE	3.82 mm [.150]	SP
INSUL	-	-
APPLICATOR INSTRUCTIONS 408-10389		

TERMINAL DATA: SUMIKOU TECH TERMINAL SEE TABLE CRIMP SPECIFICATION			
TERMINAL NAME: RING TERMINAL			
WIRE STRIP LENGTH		INSULATION DIAMETER RANGE	
0.17-0.19 mm [.007-.007 IN]		∅0.55-0.75 mm [.022-.030 IN]	
TERMINAL APPLICATION SPECIFICATION	SEE TABLE Rev BELOW		
TERMINALS APPLIED			
TE TERMINAL	SUMIKOU TECH TERMINAL	TE TERMINAL	SUMIKOU TECH TERMINAL
2113330-1	950100-2		

WIRE SIZE	CRIMP HEIGHT mm [INCH]	CRIMP HEIGHT REFERENCE SETTING	WIRE CRIMPER	CRIMP SPECIFICATION
0.75 mm MAG WIRE	1.35+/-0.030 [.0531+/-0.0012]	4.9	1803102-1	TE ENGINEERING
0.70 mm MAG WIRE	1.30+/-0.030 [.0512+/-0.0012]	7.1	1803102-1	TE ENGINEERING
0.65 mm MAG WIRE	1.25+/-0.030 [.0492+/-0.0012]	8.9	1803102-1	SUMIKOU TECH A1834
0.60 mm MAG WIRE	1.20+/-0.025 [.0472+/-0.0010]	8.7	1803102-2	TE ENGINEERING
0.55 mm MAG WIRE	1.15+/-0.025 [.0453+/-0.0010]	9.6	1803102-2	SUMIKOU TECH A2268
0.45 mm MAG WIRE	1.08+/-0.025 [.0425+/-0.0010]	7.9	1803102-3	SUMIKOU TECH A2151

- RECOMMENDED SPARE PARTS
- GREASE BEARING SURFACES LIGHTLY
- 3. LUBRICATE DAILY PER THE APPLICATOR INSTRUCTION SHEET SUPPLIED WITH THE APPLICATOR.
- APPLICATOR SPECIFIC DATA TO BE ENTERED INTO BLANK MEMORY CHIP AT ASSEMBLY. SEE BELOW FOR PART NUMBER:
 MECHANICAL FEED WITH "SMART APPLICATOR" CONVERSION: 8-2151914-4
 PNEUMATIC FEED WITH "SMART APPLICATOR" CONVERSION: 8-2151914-4
 SERVO FEED WITH "FINE CRIMP HEIGHT ADJUST": 8-2151914-5
- 5. ADJUSTMENT OF THE STRIPPER MAY BE REQUIRED WHEN MOVING THE APPLICATOR BETWEEN BENCH AND LEADMAKER APPLICATIONS.
- APPLY PART NUMBER 1-23419-5 LOCTITE TO THREADS OF ITEM 62.
- GREASE THREADS, GROOVE AND O-RING ON ITEMS 139 & 152.
- MAGNET MUST BE ORIENTED CORRECTLY IN ORDER TO PROPERLY ACTUATE THE COUNTER.
- CRIMP HEIGHT REFERENCE SETTING WAS THE SETTING USED WHEN THE APPLICATOR WAS QUALIFIED AT THE FACTORY. ADJUSTMENT MAY BE NECESSARY WHEN RUNNING APPLICATOR IN THE FIELD.
- SPARE FEED CAM STORAGE LOCATION REFER TO INSTRUCTION SHEET FOR ADDITIONAL INFORMATION.
- TO CONVERT THE APPLICATOR TO A NON-CARRIER CUTTING STYLE, REMOVE ITEM 13 AND ATTACH TO THE LOCATION ON BACK SIDE OF THE HOUSING. REFER TO INSTRUCTION SHEET FOR ADDITIONAL INFORMATION.
- USE WIRE CRIMPER LISTED IN CHART FOR DESIGNATED MAG WIRE SIZE.
- ITEM NOT SHOWN.

***WARNING**
 ON INSTALLATION, SET WIRE DISC, ITEM 40 TO LARGEST WIRE SIZE SETTING. USE OF SETTINGS BELOW MINIMUM REQUIRED CRIMP HEIGHT SETTING WILL CAUSE DAMAGE TO CRIMP TOOLING.

	1	1	1	1	1	1803102-3	CRIMPER, WIRE	255
	1	1	1	1	1	1803102-2	CRIMPER, WIRE	253
	-	1	1	1	1	2119782-1	FINE ADJUST HEAD ASM, PACIFIC STYLE	251
	-	-	-	1	-	2119640-1	PUSH ROD, AIR FEED	250
	-	-	-	1	-	2079988-1	BUSHING, LCH5-12, MISUMI	249
	-	1	1	1	1	1-22279-3	SPRING, COMPRESSION	246
	-	1	1	1	1	7-18023-7	SCR, SKT HD CAP M3 X 4.0	241
	-	-	2	-	-	2168400-6	SHCS, LOW HEAD, RoHS, M5 X 16	240
	-	-	-	-	1	2119580-1	MECHANICAL FEED ASSEMBLY	239
	-	-	-	1	-	2063440-1	AIR FEED MODULE	238
	-	1	1	1	1	356885-4	STOP, SHEAR	237
	-	-	1	-	-	2119740-2	TAG, IDENTIFICATION	213
	-77	-27	-25	-22	-21	PART NO	DESCRIPTION	ITEM NO

PACIFIC VERSION
 Shown on sheets 3 of 4 & 4 of 4
 (Atlantic version shown on sheets 1 of 4 & 2 of 4)

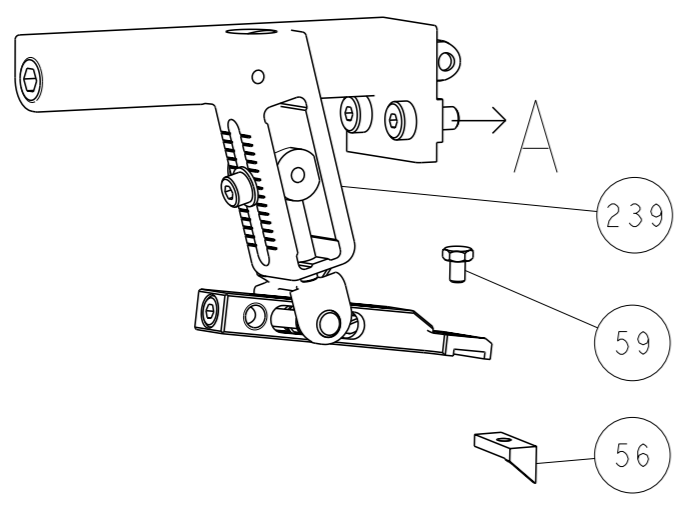
SET UP GAUGE	LOC	DIST	REVISIONS
2119599-1	A	66	

P	QTY	DESCRIPTION	DATE	OWN	APVD			
-	-	SEE SHEET 1	-	-	-			
	-	1901094-3			198			
	-	1976043-1			180			
	-	21045-3			172			
	-	994969-1			166			
	-	994970-2			164			
	-	240638-1			163			
	-	8-21084-1			152			
	-	2119641-2			151			
	-	2119798-2			145			
	-	2079383-8			144			
	-	2168400-5			143			
	-	2119653-2			142			
	-	1-2119656-0			141			
	-	2119650-1			140			
	-	2119092-2			139			
	-	3-23627-7			137			
	-	2119799-1			136			
	-	SEE NOTE 4			135			
	-	1633743-1			133			
	-	1-22281-8			121			
	-	1901092-1			118			
	-	1-690438-0			96			
	-	2168083-1			95			
	-	2168083-6			93			
	-	455888-5			82			
	-	1-240641-0			81			
	-	1962431-2			77			
	-	1803104-1			74			
	-	2119956-1			71			
	-	2119740-1			67			
	-	2168078-1			66			
	-	2119793-1			63			
	-	992763-3			62			
	-	2-18032-5			61			
	-	5-18022-5			59			
	-	21028-2			58			
	-	1338683-1			56			
	-	2168400-1			54			
	-	2168083-8			53			
	-	18023-9			49			
	-	2119652-1			48			
	-	2079383-7			41			
	-	2119645-1			40			
	-	2119957-1			39			
	-	2119644-1			38			
	-	2079383-8			33			
	-	2161328-1			32			
	-	1-1320908-6			30			
	-	1803089-1			29			
	-	2-455888-1			28			
	-	22283-1			27			
	-	356835-1			26			
	-	240792-1			25			
	-	1633630-2			24			
	-	980371-4			21			
	-	1803105-1			19			
	-	690518-1			18			
	-	690463-1			17			
	-	1-2168083-1			16			
	-	690464-1			15			
	-	2119862-1			14			
	-	2280441-1			13			
	-	3-22280-3			12			
	-	1803103-1			10			
	-	-			9			
	1	1	1	1	1-1633933-7	ANVIL, COMBINATION	8	
	-	-	-	-	-	-	7	
	-	1	1	1	690468-1	DEPRESSOR SHEAR, REAR	6	
	-	1	1	1	2119780-1	DEPRESSOR, SHEAR	5	
	-	-	-	-	-	-	4	
	-	-	-	-	-	-	3	
	-	-	-	-	-	-	2	
	1	1	1	1	1	1803102-1	CRIMPER, WIRE	1

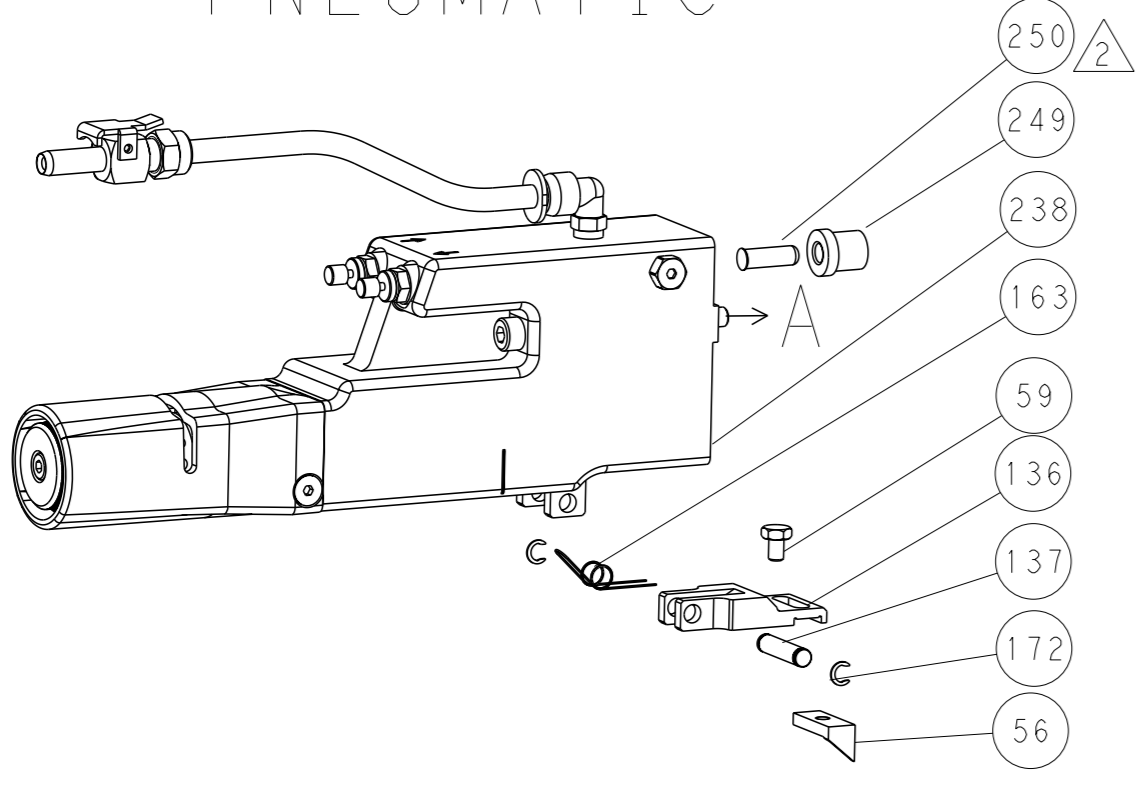
DIMENSIONS:		TOLERANCES UNLESS OTHERWISE SPECIFIED:		OWN	DATE	NAME
mm	0 PLC ±	1 PLC ±	2 PLC ±	R. CLIFFORD	25APR2013	TE Connectivity
	3 PLC ±	4 PLC ±	ANGLES ±	T. ELBIN	25APR2013	Harrisburg, PA 17105-3608
MATERIAL:	FINISH	APPLICATOR SPEC		APVD	DATE	NAME
				M. CLIFFORD	25APR2013	Ocean Side Feed Applicator
Customer Accessible Production Drawing				SCALE	SHEET	REV
				1:2	3 of 4	B

LOC		DIST		REVISIONS			
A	66	P	LYR	DESCRIPTION	DATE	OWN	APVD
		-		SEE SHEET 1			

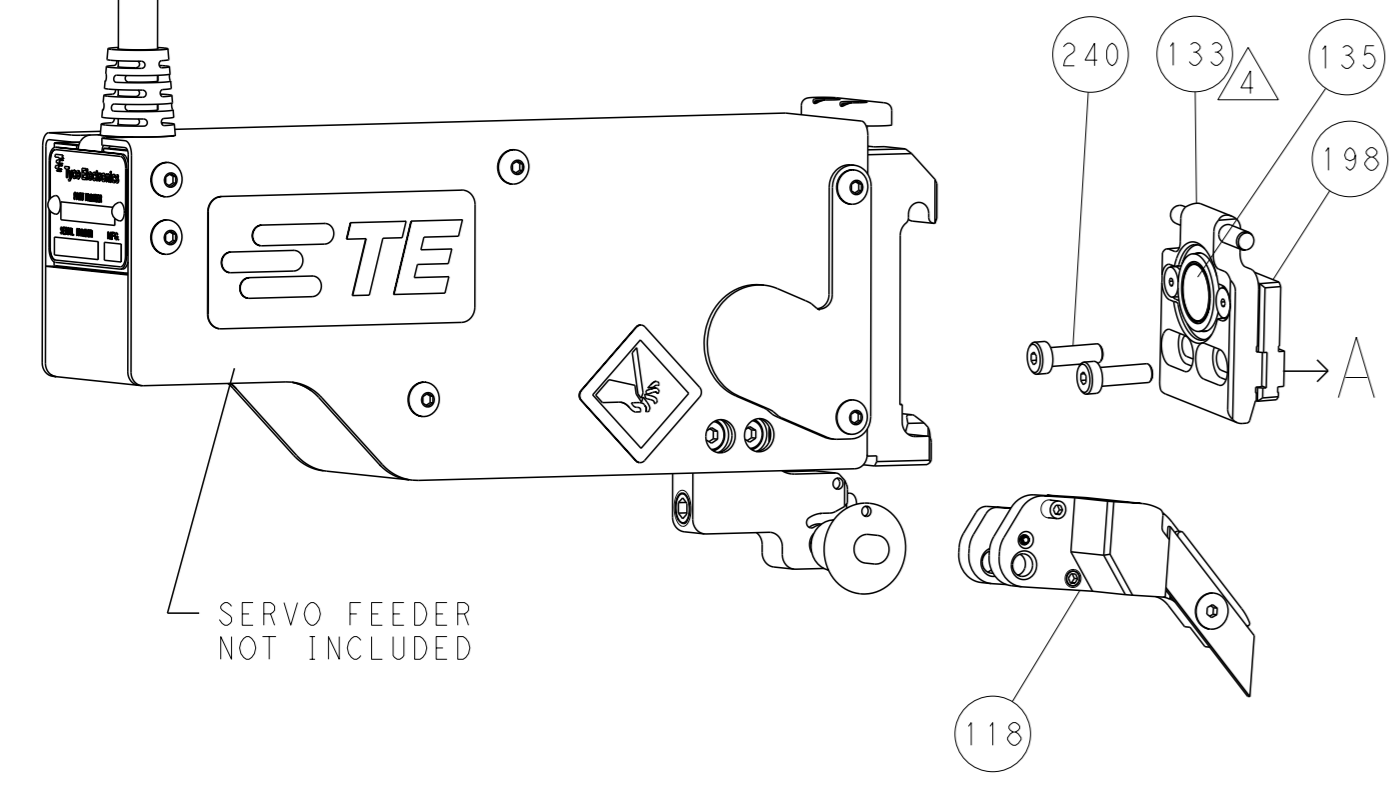
FEED TYPE MECHANICAL



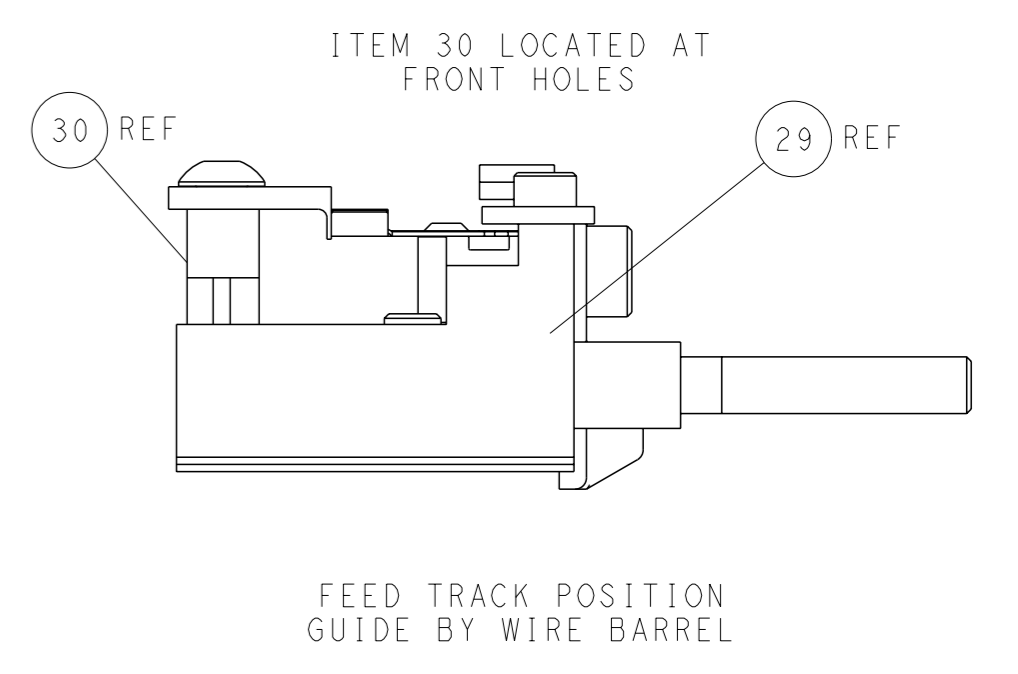
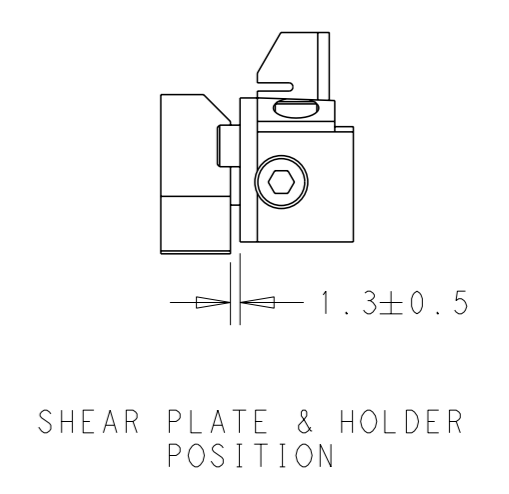
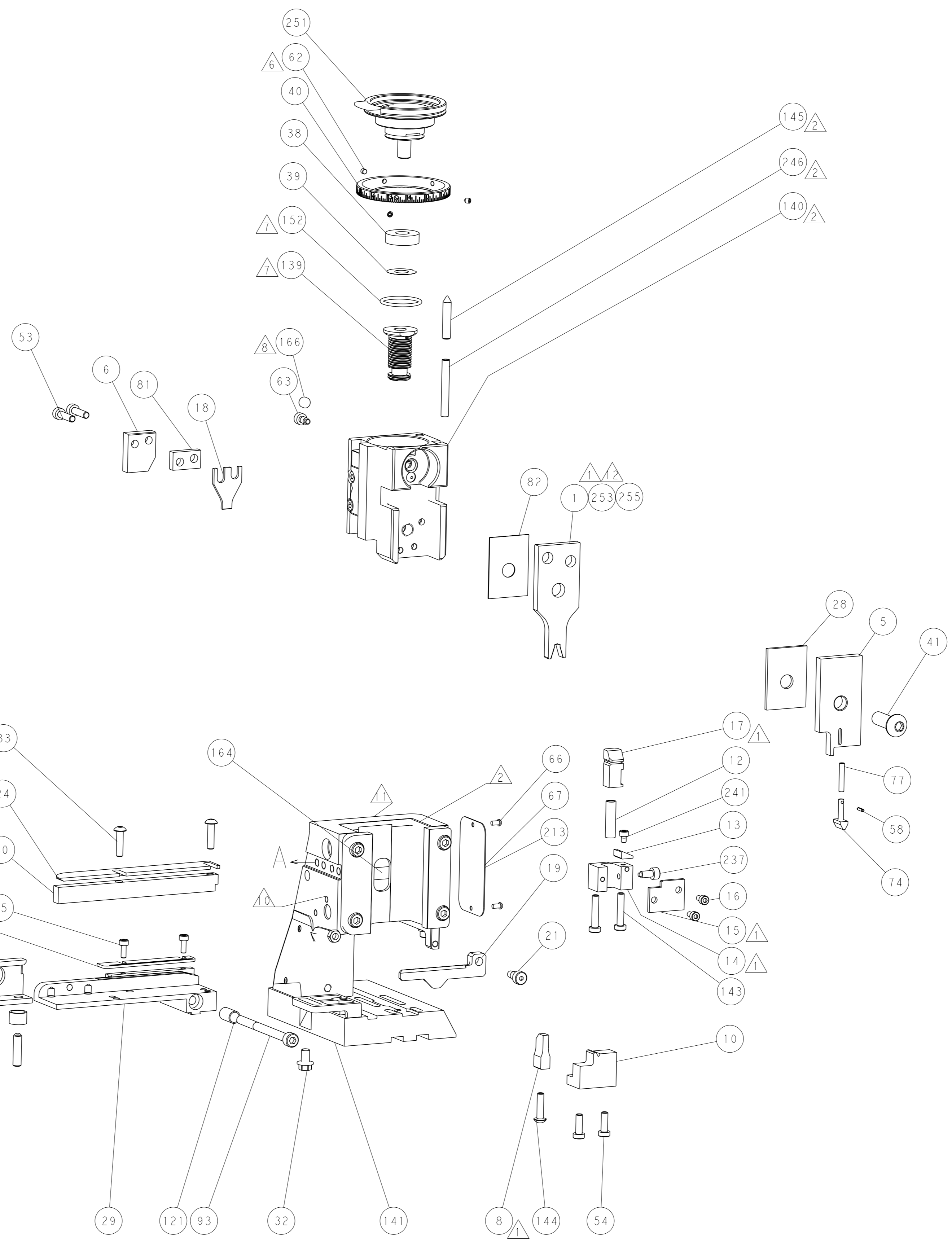
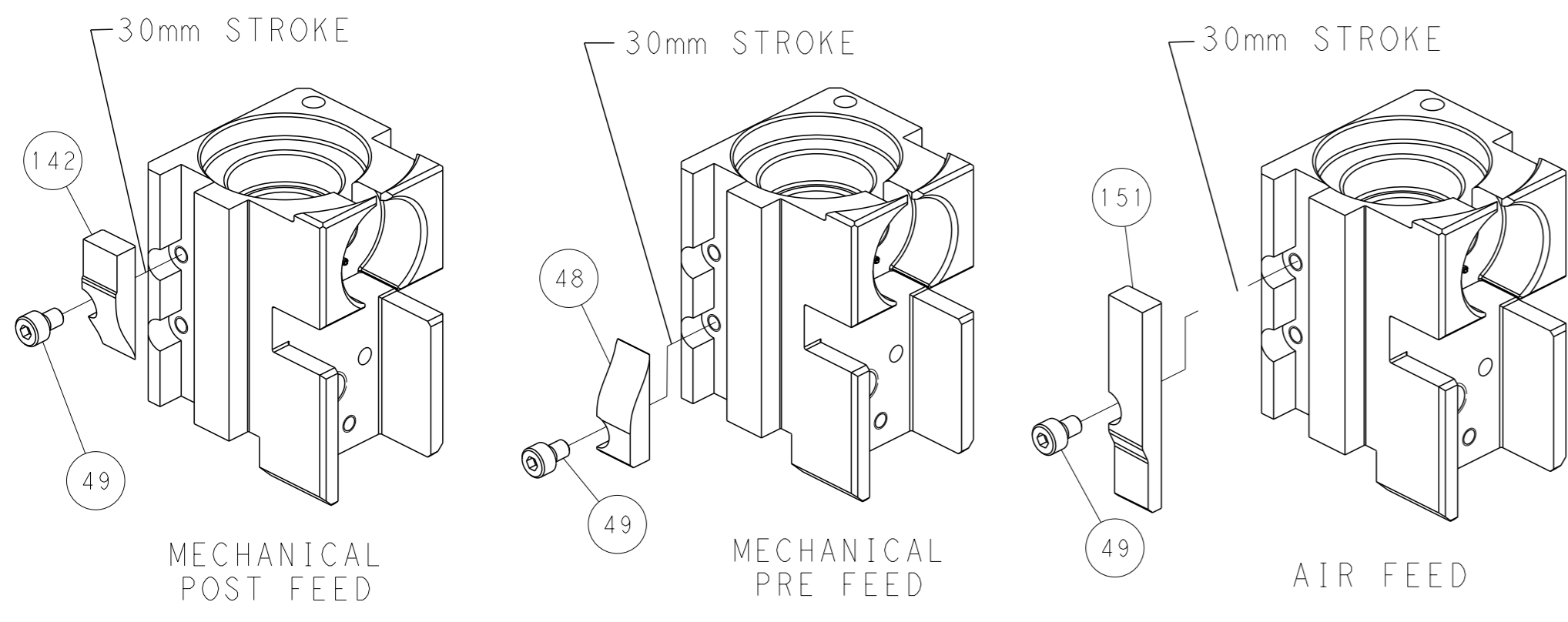
PNEUMATIC



SERVO LATCH PLATE



CAM POSITIONS



PACIFIC VERSION
 Shown on sheets 3 of 4 & 4 of 4
 (Atlantic version shown on sheets 1 of 4 & 2 of 4)

<small>THIS DRAWING IS A CONTROLLED DOCUMENT FOR TYCO ELECTRONICS CORPORATION. IT IS SUBJECT TO CHANGE AND THE CONTROLLER ENGINEERING DEPARTMENT SHOULD BE CONTACTED FOR THE LATEST REVISION.</small>		OWN: R. CLIFFORD 25APR2013 CHK: T. ELBIN 25APR2013 APVD: M. CLIFFORD 25APR2013	NAME: Ocean Side Feed Applicator SIZE: A1 CAGE CODE: 00779 DRAWING NO: 2151914	RESTRICTED TO: B
DIMENSIONS: mm TOLERANCES UNLESS OTHERWISE SPECIFIED: 0 PLC ± 1 PLC ± 2 PLC ± 3 PLC ± 4 PLC ± ANGLES FINISH ±	WEIGHT: - SCALE: 1:2 SHEET: 4 of 4 REV: B	Customer Accessible Production Drawing		