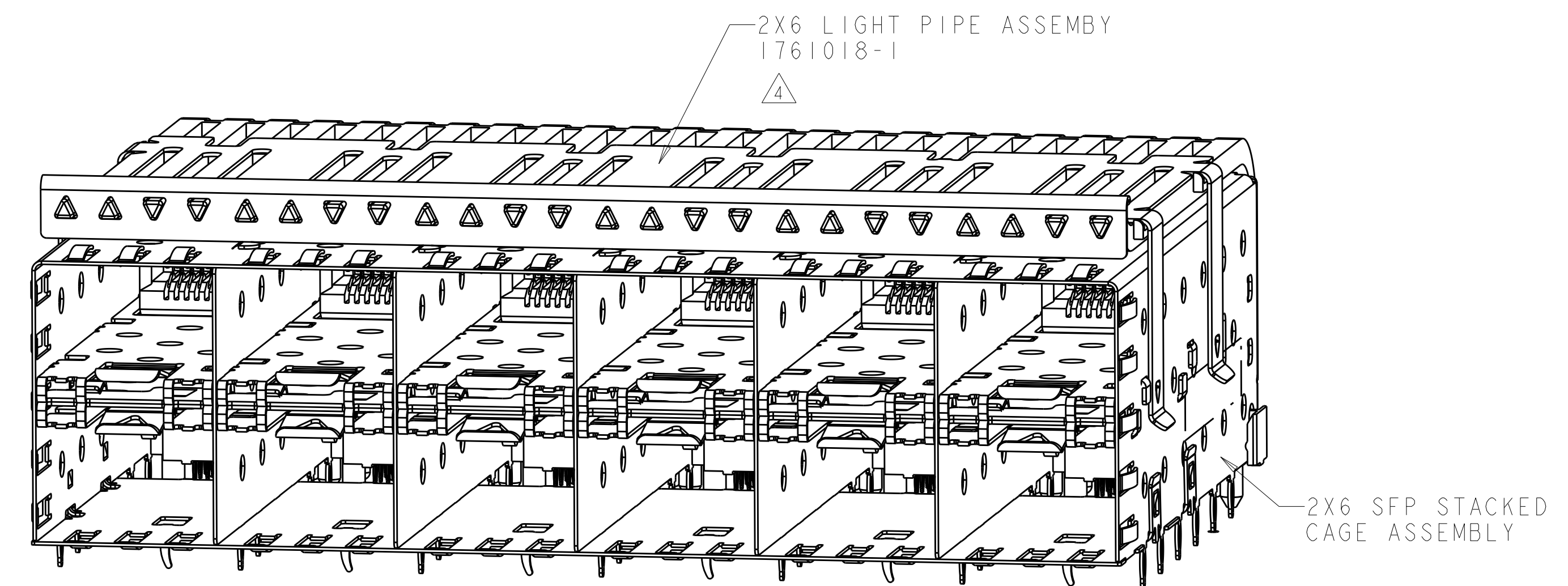
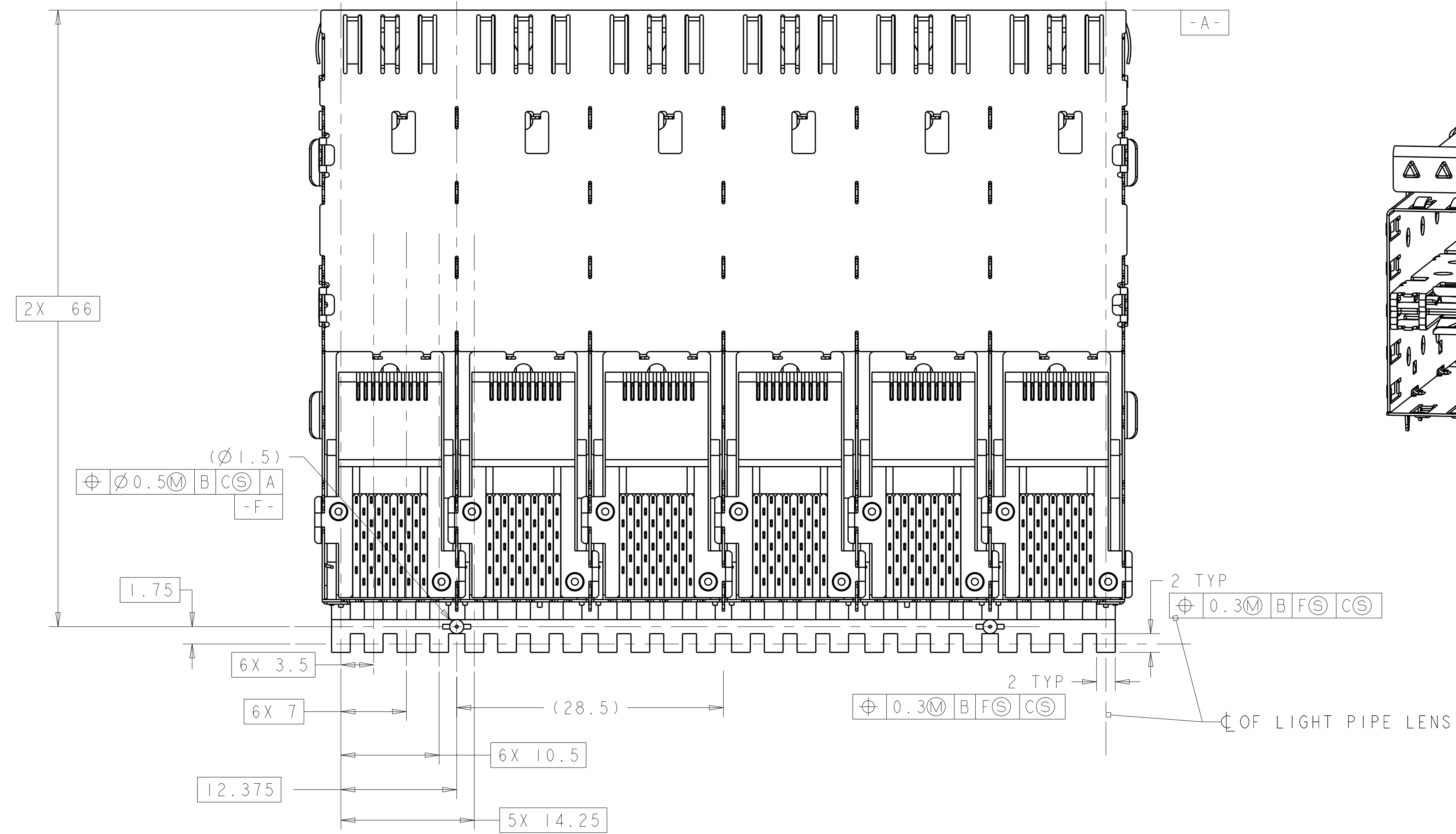
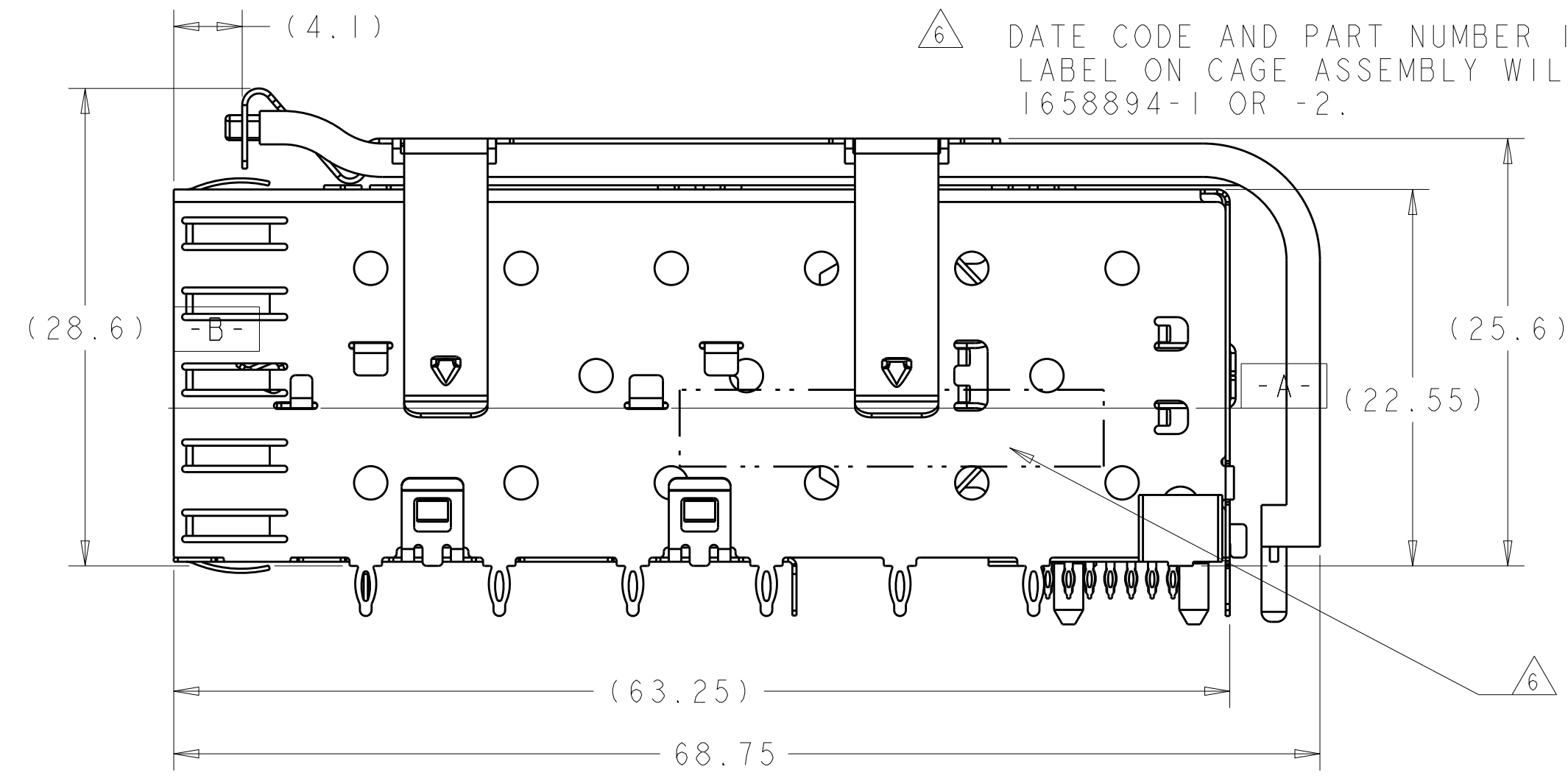
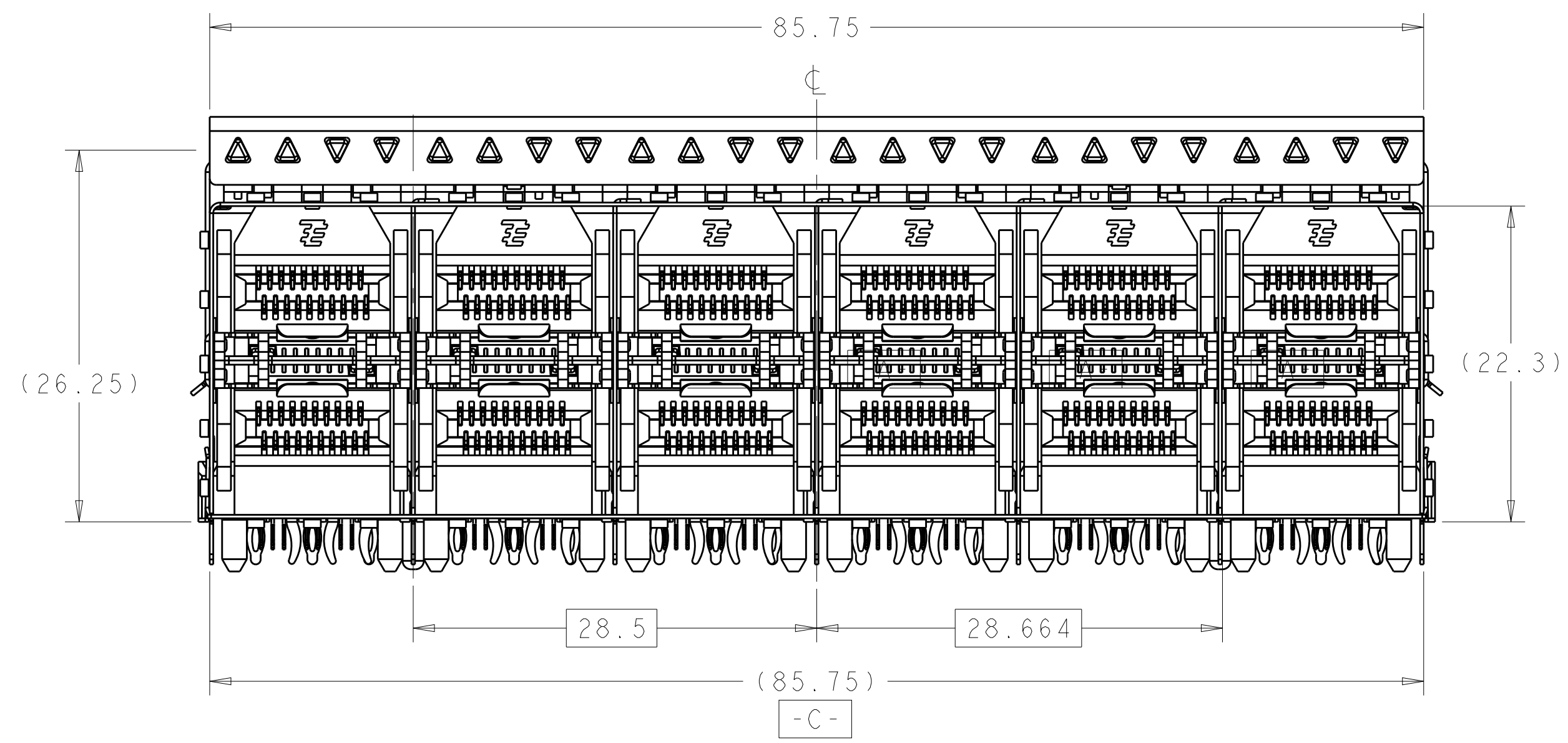


LOC	DIST	REV	DESCRIPTION	DATE	DWN	APVD
ES	00					
C			ECR-08-028454	11NOV2008	AL	SY
D			REVISED PER ECO-14-000886	20FEB2014	JW	SH
D1			REVISED PER ECO-14-010419	11JUL2014	JW	SH
E			REVISED PER ECO-15-013594	22SEP2015	JW	SH

- △ DATUM AND BASIC DIMENSION TO BE DETERMINED BY CUSTOMER
- △ DATUM C APPLIES OVER ENTIRE DIMENSION
- △ INTERPRETATION OF DATUM REFERENCE FRAME IN ACCORDANCE WITH SECT 4.4.1.1 OF ASME Y14.5M-1994
- △ LIGHT PIPE KIT SUPPLIED SEPARATELY, KIT TO BE ATTACHED AFTER SEATING OF CAGE CONNECTOR ASSEMBLY ON BOARD.
- 5. CAGE CONSISTS OF LIGHT PIPE ASSEMBLY AND CAGE/CONNECTOR ASSEMBLY, SUPPLIED UNASSEMBLED.
- △ DATE CODE AND PART NUMBER IN APPROXIMATE AREA SHOWN LABEL ON CAGE ASSEMBLY WILL HAVE PART NUMBER 1658894-1 OR -2.



1658895-18-2
SCALE 3:1

LOC	DIST	REV	DESCRIPTION	DATE	DWN	APVD
ES	00					
C			ECR-08-028454	11NOV2008	AL	SY
D			REVISED PER ECO-14-000886	20FEB2014	JW	SH
D1			REVISED PER ECO-14-010419	11JUL2014	JW	SH
E			REVISED PER ECO-15-013594	22SEP2015	JW	SH

SUPERSEDED BY:
1658895-2

LOC	DIST	REV	DESCRIPTION	DATE	DWN	APVD
ES	00					
C			ECR-08-028454	11NOV2008	AL	SY
D			REVISED PER ECO-14-000886	20FEB2014	JW	SH
D1			REVISED PER ECO-14-010419	11JUL2014	JW	SH
E			REVISED PER ECO-15-013594	22SEP2015	JW	SH

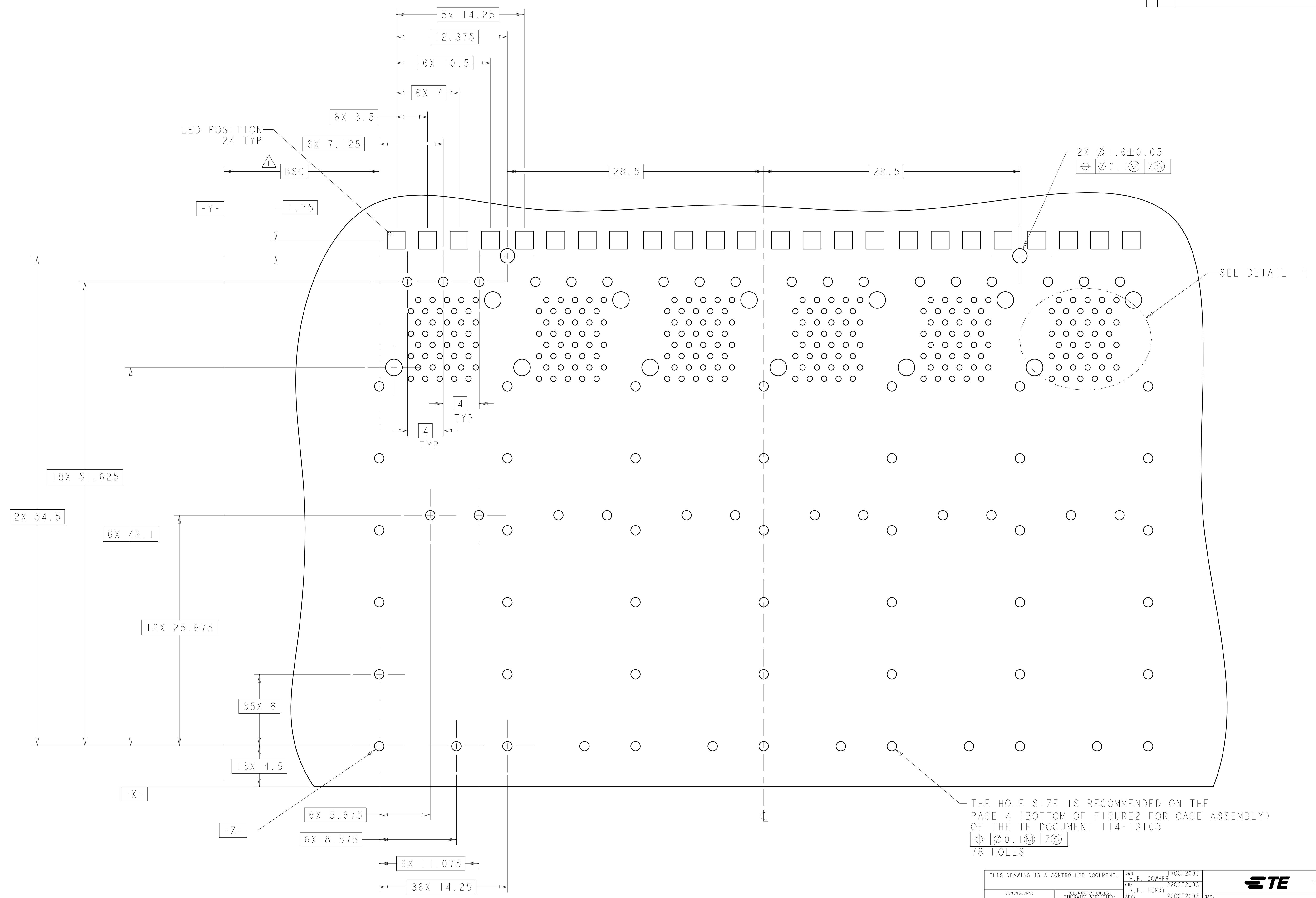
THIS DRAWING IS A CONTROLLED DOCUMENT. DIMENSIONS: mm. TOLERANCES UNLESS OTHERWISE SPECIFIED: 0 PLC ±0.25, 1 PLC ±0.25, 2 PLC ±0.1, 3 PLC ±0.1, 4 PLC ±0.1, ANGLES ±°. MATERIAL: . FINISH: .

OWN: M.E. CONNER, 10CT2003. CHK: R.R. HENRY, 22OCT2003. APVD: R.R. HENRY, 22OCT2003. PRODUCT SPEC: 108-2161. APPLICATION SPEC: 114-13103. WEIGHT: .

NAME: 2X6 SFP STACKED CAGE ASSEMBLY WITH LIGHT PIPE, PRESS FIT, STACKED SFP. SIZE: A1. CAGE CODE: 1658895. DRAWING NO: 1658895-18-2. SCALE: 3:1. SHEET: 1 OF 3. REV: E.

TE Connectivity

LOC	DIST	REVISIONS			
P	LTN	DESCRIPTION	DATE	DWN	APVD
-	-	SEE SHEET 1	-	-	-



THE HOLE SIZE IS RECOMMENDED ON THE PAGE 4 (BOTTOM OF FIGURE 2 FOR CAGE ASSEMBLY) OF THE TE DOCUMENT 114-13103

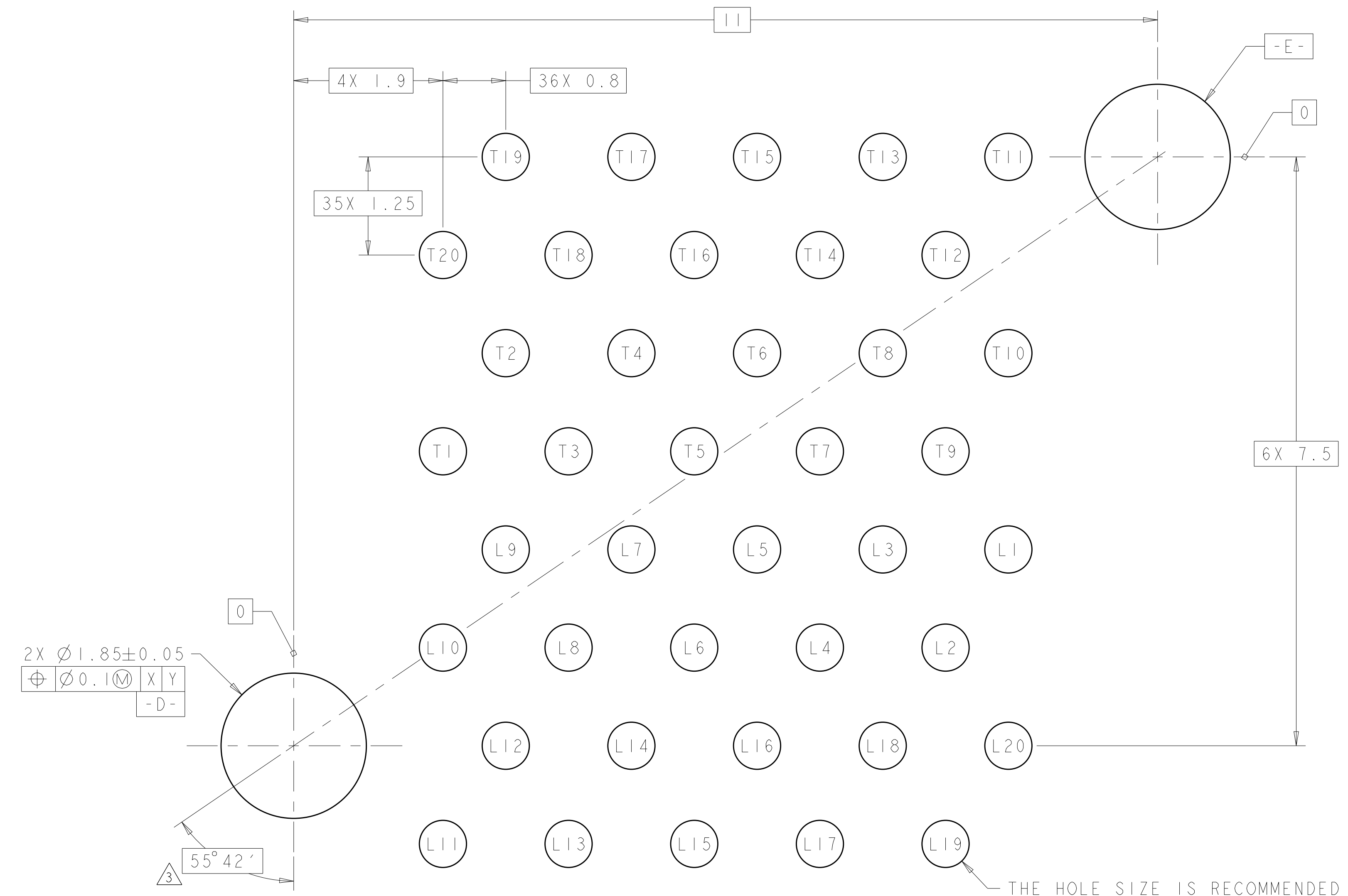
$\varnothing 0.1 \text{ (M)} | Z(S)$

78 HOLES

RECOMMENDED PCB CONFIGURATION
SCALE 5:1

THIS DRAWING IS A CONTROLLED DOCUMENT.		DWN: M.E. CONHEB 17OCT2003	TE Connectivity
DIMENSIONS: mm		CHK: R.R. HENRY 22OCT2003	
TOLERANCES UNLESS OTHERWISE SPECIFIED:		APVD: R.R. HENRY 22OCT2003	NAME: 2X6 CONNECTOR ASSEMBLY WITH LIGHT PIPE, PRESS FIT, STACKED SFP
0 PLC ± 0.25	1 PLC ± 0.25	PRODUCT SPEC: 108-2161	SIZE: A1
2 PLC ± 0.1	3 PLC ± 0.1	APPLICATION SPEC: 114-13103	CAGE CODE: 1658895
4 PLC ± 0.1	ANGLES ± 0.1	WEIGHT: -	RESTRICTED TO: -
MATERIAL: -	FINISH: -	CUSTOMER DRAWING	SCALE: 5:1 SHEET 2 OF 3 REV E

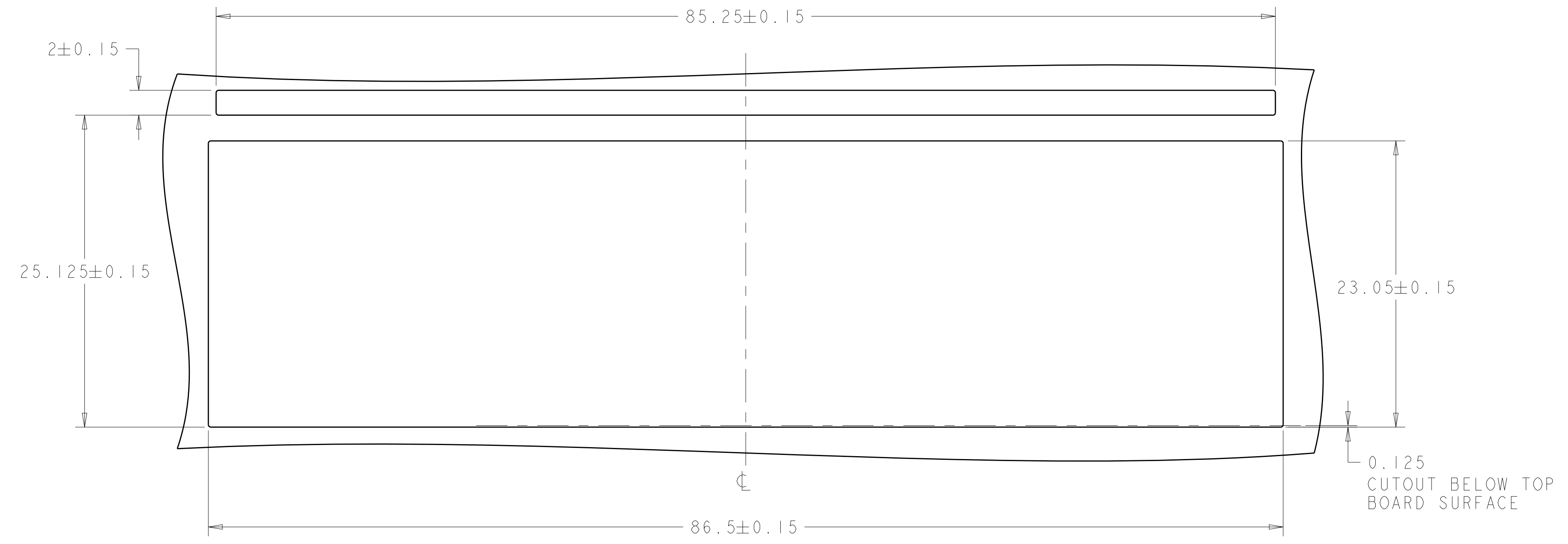
LOC		DIST		REVISIONS			
ES	00	P	LTH	DESCRIPTION	DATE	DWN	APVD
-	-	-	-	SEE SHEET 1	-	-	-



DETAIL H
RECOMMENDED PT CONNECTOR CONFIGURATION
4X INDIVIDUALLY
SCALE 25:1

THE HOLE SIZE IS RECOMMENDED ON THE PAGE 4 (TOP OF FIGURE 2 FOR CAGE CONNECTOR) OF THE TE DOCUMENT 114-13103

$\oplus \varnothing 0.08 \text{ (M)} \text{ | D (S) | E (S)}$
40X6 HOLES



RECOMMENDED BEZEL CUTOUT
SCALE 4:1

THIS DRAWING IS A CONTROLLED DOCUMENT.		DWN: M.E. CONNER 17OCT2003	
DIMENSIONS: mm		CHK: R.R. HENRY 22OCT2003	
TOLERANCES UNLESS OTHERWISE SPECIFIED:		APVD: R.R. HENRY 22OCT2003	NAME: 2X6 CONNECTOR ASSEMBLY WITH LIGHT PIPE, PRESS FIT, STACKED SFP
0 PLC	±0.25	PRODUCT SPEC: 108-2161	SIZE: A1
1 PLC	±0.25	APPLICATION SPEC: 114-13103	CAGE CODE: C=1658895
2 PLC	±0.1	WEIGHT: -	RESTRICTED TO: -
3 PLC	±	CUSTOMER DRAWING	SCALE: 4:1
4 PLC	±		SHEET: 3 OF 3
ANGLES	±		REV: E
FINISH	±		