



2 Port USB to Serial RS-232 DB-9 Adapter Industrial Metal

Product Manual



Coolgear
Version 1.0
January 2018
Model Number: USB-2COM-M

Revision History

Revision	Date	Author	Comments
1.0	07/06/2015	Coolgear	Old format
1.1	02/02/2018	Coolgear	New manual format

About this document

This product manual outlines installation and features of the USB-2COM-M 2 Port USB to Serial RS-232 DB-9 Adapter Industrial Metal Housing.

Scope

The scope of this manual is to give the user of the product an understanding of its use with detailed diagrams and verbiage. The manual helps the users to apply the product to their application.

Intended Audience

This product is intended for use in office or industrial applications where serial communication between device and computer is necessary. It can be used with bar code scanners, printers, time clocks, modems and other Industrial serial RS-232 applications.

Product Support

support@coolgear.com

Table of Contents

1. Introduction	5
1.1 About the Adapter	5
1.2 Features	5
1.3 Windows 7/ Vista / 2003 / XP / 2000 Driver Installation.....	6
1.4 Check Installation.....	7
2. Uninstalling Windows 7 or Vista Drivers	11
3. RS-232 Signal Pin-outs of DB-9 Male	14
4. Notes, Tips, Warnings, and Safety	15
5. Product URL	16

Table of Figures

Figure 1 DOS Window Install	6
Figure 2 FTDI Status Ready Dialog Box	Error! Bookmark not defined.
Figure 3 Disconnect FTDI Devices Dialog Box	8
Figure 4 Uninstall all FTDI drivers Dialog Box	8
Figure 5 Cancel Driver Installation Dialog Box.....	9
Figure 6 FTDI Sytem Clean Completed Dialog Box	9
Figure 7 Add Remove Programs Dialog Box	10
Figure 8 Control Panel Dialog Box.....	11
Figure 9 COM Ports Dialog Box	11
Figure 10 Confirm Device Uninstall Dialog Box 1	12
Figure 11 Locate Device Dialog Box	12
Figure 12 Confirm Device Uninstall Dialog Box 2	13
Figure 13 DB-9 Pin Connector Pin Out Diagram	14

1. Introduction

The USB-2COM-M USB to 2-Port Rugged Metal Serial Adapter is designed to make serial port expansion quick and simple. Plugging the USB Serial Adapter to the USB port, the adapter is automatically detected and installed. The USB Serial Adapter provides instant connectivity to RS-232 communication device for factory automation equipment, multi-drop data collection devices, barcode readers, time clocks, scales, data entry terminal and serial communication in harsh environment.

WEIGHT	4.9 oz.
UPC	729440690748
ADAPTER DIMENSIONS	57 x 72 x 22 mm (W×L×H), 82 x 82 x 22 mm with DB9 connector and ears
CABLE LENGTH	3ft.
WARRANTY	1 year from date of purchase
COLOR	Black
PORTS	1x DB-9 male / 1 two pin terminal

1.1 About the Adapter

Protocol	Connector	Shell
Adds two serial port to your desktop or laptop computer. Uses RS-232 Protocol communication	One male DB-9 pin connector with hex nut tightening for secure connection and one 2-Pin terminal connection.	Rugged SECC metal shell with PWR, TxD and RxD LED indicators for each RS-232 connections.

1.2 Features

Feature List
<ul style="list-style-type: none"> • Adds two industrial RS-232 serial ports by connecting to a USB port. • Optional feature to supply power output of 5V, 150mA through PIN-1 & 2 of terminal block to the serial devices requiring power. • Installed as standard Windows COM port • SECC metal chassis with DIN rail bracket • Full RS-232 modem control signals and hardware/software flow control. • RS-232 data signals: TxD, RxD, RTS, CTS, DSR, DTR, DCD, RI, GND • High speed serial port with the baud rate up to 921.6K bps.

- 128 byte transmit FIFO & 384 byte receive FIFO.
- Non-standard baud rates supported.
- Serial port protected with surge protection of 10KV
- COM port number assigned can be changed to any COM port number required
- LEDs of Power, TxD and RxD for easy port monitoring and diagnostics
- Works with USB 1.1 & 2.0 host port

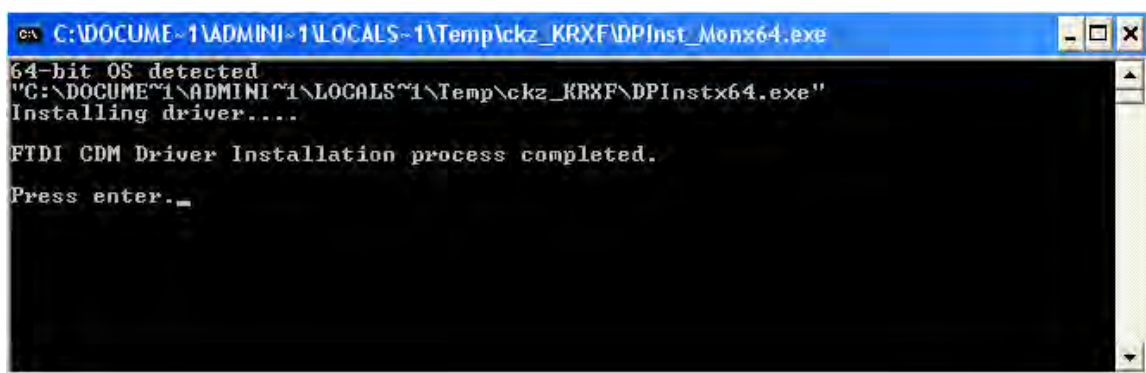
1.3 Windows 7/ Vista / 2003 / XP / 2000 Driver Installation

You need to have administrator privileges to install any new drivers under Windows 7/ Vista / 2003/ XP / 2000. To install the driver or update the configuration please log onto Windows as "Administrator" or ask your system administrator to install the USB-COM driver.

Note: You need to install driver first, prior to hardware installation. Do not connect the USB-to-Serial Adapter to the USB port of your computer, before you finish driver installation.

Please proceed with the following steps to install the driver:

1. Insert the "USB COM Series Driver and Utility" CD into your CD-ROM.
2. The "USB COM Series Driver and Utility CD" dialog box appears.
3. Under "Driver Installation", double click "Windows 7, Vista, 2003, XP, 2000 driver" to install the device driver.
4. The USB COM install program will auto-detect the OS type and install the driver automatically. (**Note:** in Windows 7 or Vista OS you will find another dialog box, please click on "OK" to confirm the drivers install program).



```
C:\> C:\DOCUME~1\ADMINI~1\LOCALS~1\Temp\ckz_KRXF\DPInst_Monx64.exe
64-bit OS detected
"C:\DOCUME~1\ADMINI~1\LOCALS~1\Temp\ckz_KRXF\DPInstx64.exe"
Installing driver....
FTDI CDM Driver Installation process completed.
Press enter._
```

Figure 1

5. After the message “FTDI CDM Driver installation process completed” appears, press “Enter” to complete the driver installation.
6. Plug in the USB to Serial Adapter to the USB port of your computer. Windows will finish installing the driver files.

1.4 Check Installation

You can now verify the installation has been completed successfully by looking under Device Manager of the System Properties screen. (Go there by Start-Setting- Control Panel-System Properties-Hardware-Device Manager.

The device should have installed as a "USB Serial Port (COMx)" attached to "USB Serial Converter (A/B or A/B/C/D)".

Change COM Port Properties & COM Port Number

This feature is particularly useful for programs, such as HyperTerminal, which only work with COM1 through COM4. Please ensure that you do not change the COM Port Number already in use.

To change the virtual COM port properties:

1. Insert the “USB COM Series Driver and Utility” CD into your CD-ROM.
2. The “USB COM Series Driver and Utility CD” dialog box appears.
3. Under “Driver uninstalling”, double click “Windows 2003, XP, 2000 driver uninstall” to uninstall the device driver.
4. When following dialog box appears, double click “Clean System” to uninstall the 2003/XP/2000 drivers.



Figure 2

5. You need to disconnect all USB to serial Adapters from your PC, when the message below appears. Double click "OK" to start uninstalling Windows 2003/XP/2000 USB to Serial drivers.



Figure 3

6. Double click "Yes" to confirm it.

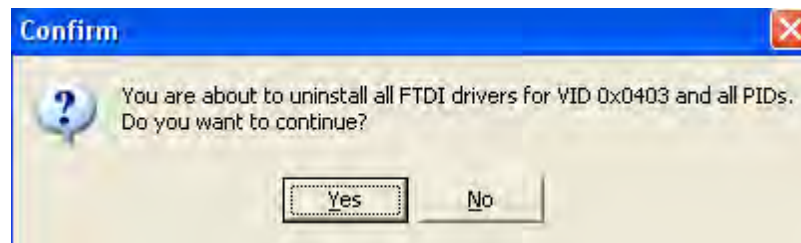


Figure 4

7. Click "No" to proceed.

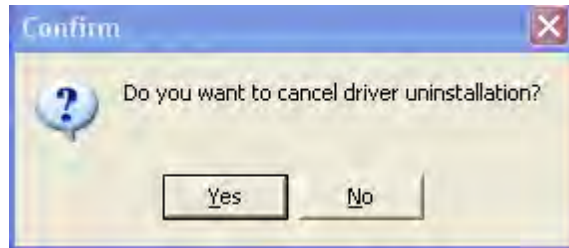


Figure 5

8. When the message "Status: System clean completed" appears, double click "Exit" to complete the USB to serial drivers uninstall.



Figure 6

9. Press "**Start**" button and select "**Control Panel**".
10. Open the Add or Remove program.

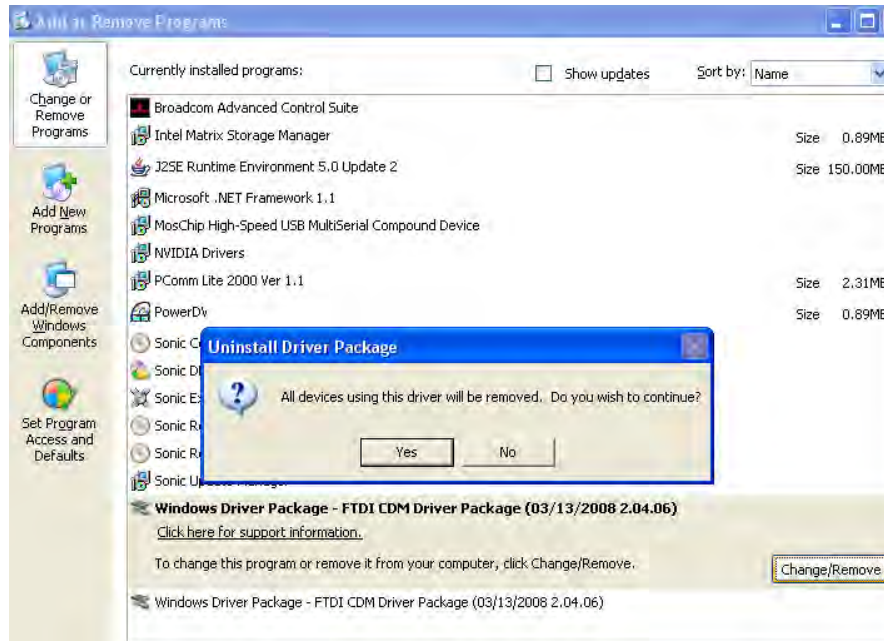


Figure 7

11. Remove the first “Windows Driver Package – FTDI CDM Driver Package (...)”.
12. Click “Change/Remove” and “Yes” to remove the first Windows Driver Package.
13. Remove the second “Windows Driver Package – FTDI CDM Driver Package (...)”.
14. Click “Change/Remove” and “Yes” to remove the second Windows Driver Package.
15. Reboot the computer to complete the driver uninstall.

2. Uninstalling Windows 7 or Vista Drivers

Windows 7 and Vista have many new security features. You need to proceed with the following steps to uninstall the Vista driver:

1. The USB to serial devices must connect to the PC.
2. Press “Start” button and select “Control Panel”.
3. Select “Classic View” from the top left hand corner and then “System” from the list.
4. Select “Device Manager” from the top left hand corner.

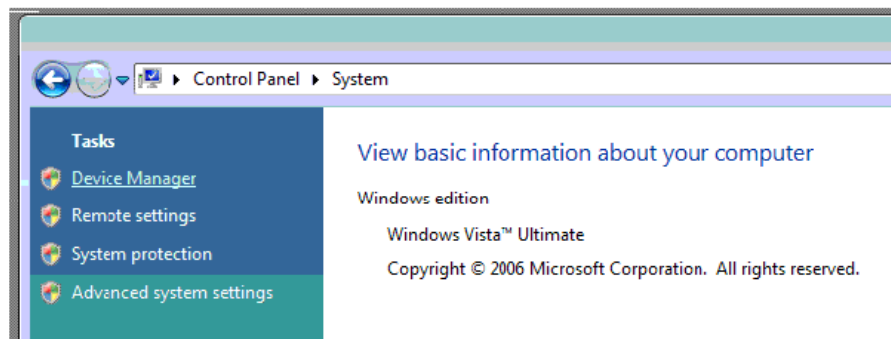


Figure 8

5. Locate your Device under the Ports (COM & LPT) section and right click on it to bring up the menu shown.

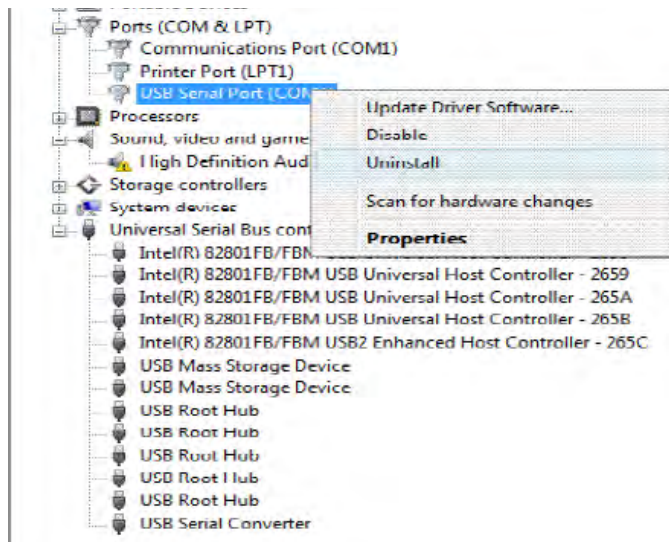


Figure 9

6. Select uninstall and be sure to click the box for “Delete the driver software for this device” in the next window and press “OK”.

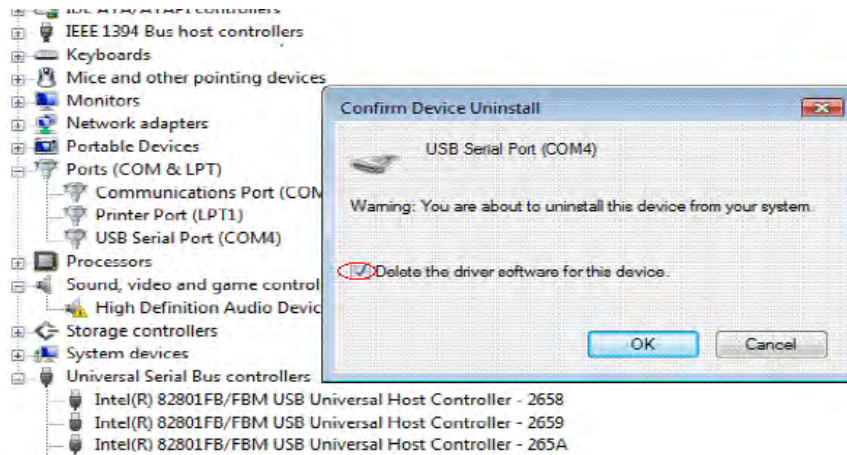


Figure 10

7. Locate your Device under the Universal Serial Bus Controllers section, and right click on it to bring up the menu shown.

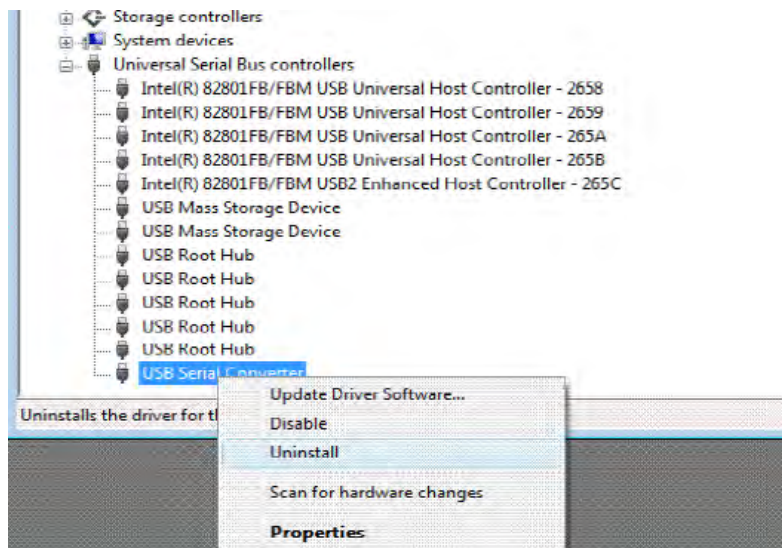


Figure 11

8. Select uninstall and be sure to click the box for “Delete the driver software for this device” in the next window and press “OK”.

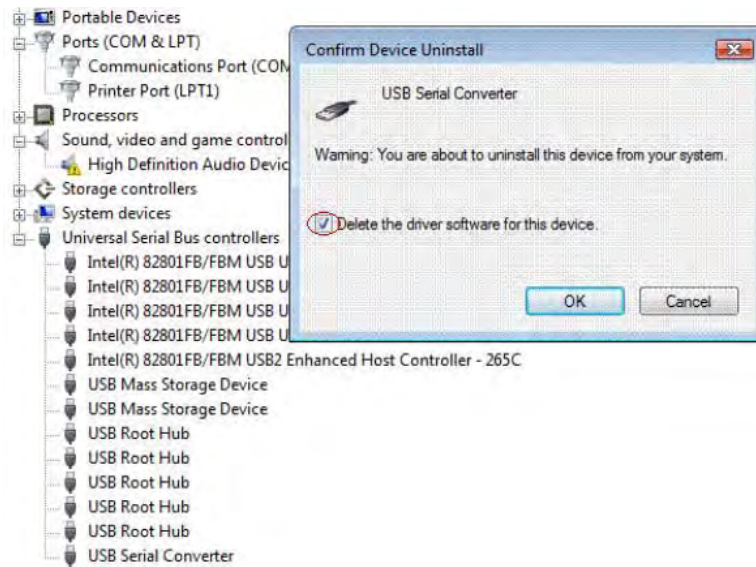


Figure 12

Note: if you have more than one USB Serial Converter installed in your PC, you need to repeat step 7 and step 8 to delete the driver software for all devices.

3. RS-232 Signal Pin-outs of DB-9 Male

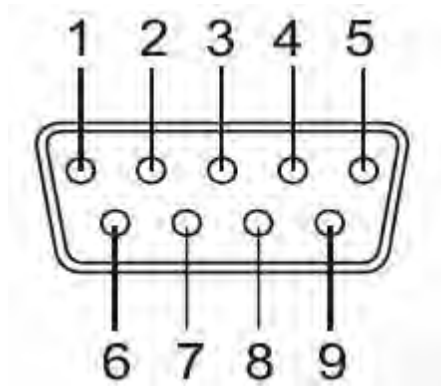


Figure 13

		DCD
Pin 2		RxD
Pin 3		TxD
Pin 4		DTR
Pin 5		GND
Pin 6		DSR
Pin 7		RTS
Pin 8		CTS
Pin 9		RI

4. Notes, Tips, Warnings, and Safety

Note

You need to install driver first, prior to hardware installation. Do not connect the USB-to-Serial Adapter to the USB port of your computer, before you finish driver installation. [Reference section 1.3](#)

If you have more than one USB Serial Converter installed in your PC, you need to repeat step 7 and step 8 to delete the driver software for all devices. [Reference section 2.](#)

Tip

N/A

Warning

N/A

Safety

N/A

5. Product URL

<https://www.coolgear.com/product/2-port-usb-to-serial-rs-232-db-9-adapter-industrial-metal-housing>