

Edgelight® Rollight™ up

易拉宝灯箱



INSTALLATION INSTRUCTION

安装使用说明书

Features/功能特点

Compared with ordinary roll-ups, this roll-up has an additional LED light source system on the basis of maintaining the advantages of common roll-ups, making the display content more attractive without fear of dark environments. There are three options for this roll up, which are built-in battery, built-in power supply, and external power supply, which can be flexibly selected according to your needs.

本易拉宝相较于普通的易拉宝，在保持普通易拉宝优点的基础上增设了LED光源系统，使展示内容更具有吸引力，同时不惧阴暗环境。本易拉宝有三款可选，分别是内置蓄电池、内置电源、外置电源，可根据自己的需求灵活选用。

Technical Parameters/技术参数

Item/项目	Specification/规格
Model/型号	AFEL-800X2000-ZJ0950-AC
Power/功耗	55W
Graphic size/画面尺寸	800×2000mm
Base size/底座尺寸	863X260X86mm
Volume/体积	0.024m³
Net weight/净重	8kg

Precautions for safe use/安全使用注意事项

Please read the installation instructions carefully and install according to the instructions before use, otherwise the roll up will be damaged and cannot be installed.
 Before use, please confirm whether the product is damaged during transportation, if it is damaged, it cannot be installed and used
 Don't try to repair by yourself, only professional engineers can repair
 Keep packaging materials away from children to prevent choking caused by children playing
 Prevent small accessories from being swallowed by children
 Keep children away from the product, and do not let children touch live equipment
 Avoid looking directly at the luminous surface of the LED for a long time, and do not use the reflected LED light to illuminate the eyes of others
 Do not cover anything on the product at work
 Keep the product away from open flames or hot objects
 The product has been repaired and needs to be repaired and inspected, or scrapped
 使用前请仔细阅读安装说明并根据说明安装，否则会导致易拉宝损坏，无法安装。
 在使用之前，需确认产品在运输中有没有被损坏，若有损坏就不能安装使用
 不要尝试自己维修，只能由专业工程师去维修
 包装材料要远离小孩，防止小孩玩弄导致窒息
 防止产品小的配件被小孩吞食
 让小孩远离产品，更不要让小孩接触带电设备
 避免长时间直视LED的发光面，不要用反射的LED的光去照射别人的眼睛
 不要在工作中的产品上覆盖任何物品
 产品要远离明火或高温物体
 产品过了使用期限，需要重新维修检查，或报废处理

The way of electric/入电选择

Three selectable power sources

三种可选择电源

Item 项目	External power supply 外置电源	Built-in power supply 内置电源
Model 型号	AD-EL-2400720-Z-H	AD-EL-2400750-B
Output voltage 输出电压	24V±0.5V	24V±0.5V
Output current 输出电流	3A	3.125A
Power 功率	72W	75W
Input current 输入电流	0.5A@230VAC	0.5A@230VAC
Leakage current 漏电流	<5mA	<5mA
Efficiency 效率	≥85%/220V	≥90%/220V
Weight 重量	334g	338g

Accumulator/Charger 锂电池/充电器

Model 型号	Voltage 电压	Capacity 容量	Working current 工作电流	Working hours 工作时间	Dimensions 外型尺寸
CCP-AD.Battery-24V10AH-340*68*38-HK	24V	≥8Ah	1.5A	3.5H	340*68*38mm

Intellectual property/知识产权

Country/国籍	Patent category/专利类别	Patent No/专利号
China/中国	Invention patent/发明专利	201910289240.0
China/中国	Utility patent/实用新型	201920486314.5
China/中国	Appearance patent/外观设计	201930733628.6
America/美国	Invention patent/发明专利	16/541,609
European/欧洲	Invention patent/发明专利	EP19194271.3



Installation steps/安装步骤

Please read the installation instructions carefully and install according to the instructions before use, otherwise the roll up will be damaged and cannot be installed.

使用前请仔细阅读安装说明并根据说明安装，否则会导致易拉宝损坏，无法安装。



1 Take out the roll-up and accessories in the handbag and prepare the canvas to be displayed

取出手提袋里的易拉宝及配件并准备好需要展示的画布

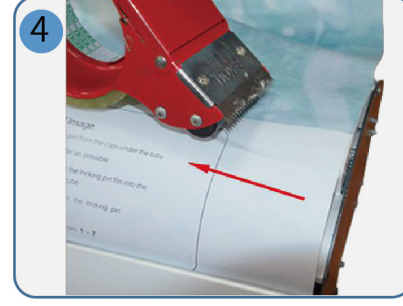


2 Lift the roll-up roller 3M double-sided adhesive protective film on the side of the roll

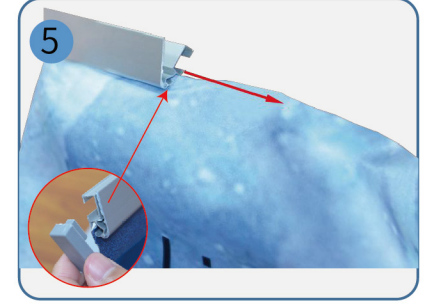
掀开易拉宝一边回转辊筒3M双面胶保护膜



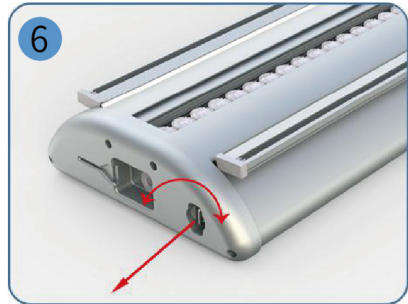
3 Paste the canvas on the rotary roller
将画布粘贴在回转辊筒上



4 Fix the canvas again with scotch tape
用透明胶带再次固定画布

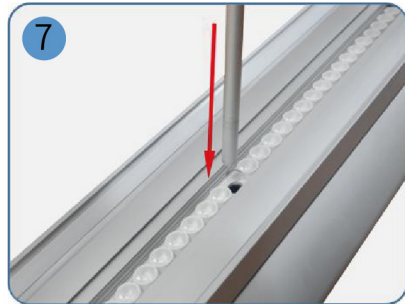


5 Open the hanging rod profile, slide the canvas along the chute. After the canvas slides completely into the chute, close the hanging rod profile cover and put the plastic end cap on it
打开挂杆型材，将画布顺着滑槽滑入，画布完全滑入滑槽后，合上挂杆型材上盖，在盖上塑料端盖



6 Pull the canvas, pull out the latch, and then slowly relax the canvas to shrink the canvas into the roll-up base

拉住画布，拔出插销，再缓慢放松画布，让画布收缩到易拉宝底座中



7 Combine the three section support rods into a support rod, and insert the support rod into the hole reserved for Rollup

将三节支撑杆组合成一根支撑杆，并将支撑杆插入易拉宝预留的孔内



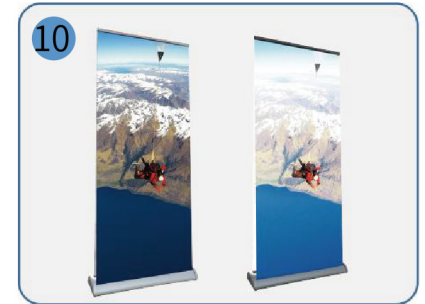
8 Pull up the canvas and hang the hanging rod on the support rod chuck

拉起画布，将挂杆挂在支撑杆夹头上



9 As shown in the figure, please insert the terminal wire according to the figure

如图所示，请按照图对齐插入端子线



10 Turn on the switch, light up roll up (built-in battery) / connect 24V power supply, light up roll up (external power)

打开开关，点亮易拉宝（内置电池/内置电源）/连接24V电源，点亮易拉宝（外置电源款）