



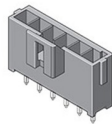
# Product Change Notification (PCN)

|   |   |             |               |
|---|---|-------------|---------------|
| PCN Number                              | 505732  | Date Issued | July 18, 2018 |
| Reason for Change                       | Capacity change or tool replacement   |             |               |
| Change Type Description                 | This letter is to inform you that another set of tooling is being added to meet the current and future demands of this product. There will be no changes in the fit, form or function from the additional tooling when compared to the current tooling. |             |               |
| Assessment of Change                    | Product will be fully qualified before it is shipped. Qualification reports are available upon request.   |             |               |
| Internal Molex Qualification Date       | January 14, 2019  |             |               |
| Sample Availability Date (Changed Part) | January 14, 2019  |             |               |
| Planned Implementation Date             | January 14, 2019  |             |               |
| Method of Identifying Change            | Product made after planned implementation date can contain the change   |             |               |

RFI EASFD

**Before Change**

- Capacity Tooling
- Ultra-Fit Header housing



**After Change**

- Overview**
- Capacity tooling is being added to produce Ultra-Fit 3ckt Single Row Header Housing
- Product Impact
  - No impact to fit, form or function"
- Part Number Impact
  - 1722861103, 1722861203, 1722861303, 1722862103, 1722862203, 1722862303, 1723101103, 1723101203, 1723101303
- Qualification Reports and samples available upon request after the date shown above



## Product Change Notification (PCN)

---

You may address any technical inquiries regarding this PCN by sending E-mail to [pcn\\_coordinator@molex.com](mailto:pcn_coordinator@molex.com) or your Local Sales Engineer.

Note: While responding, please retain "**PCN Notification:505732**" in the e-mail Subject line for faster response.

RELEASED

**Molex, LLC**  
2222 Wellington Court  
Lisle, IL 60532  
TEL: 630-969-4747  
[www.molex.com](http://www.molex.com)

Molex Part #

1722861103

1722861203

1722862103

1723101103

1723101203

1723101303