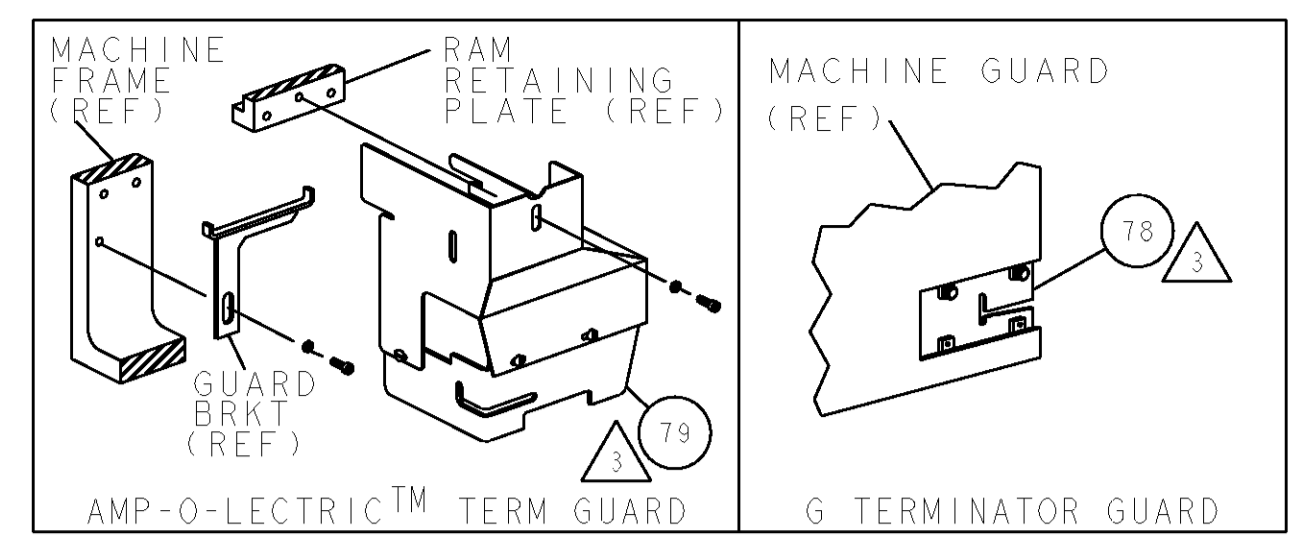


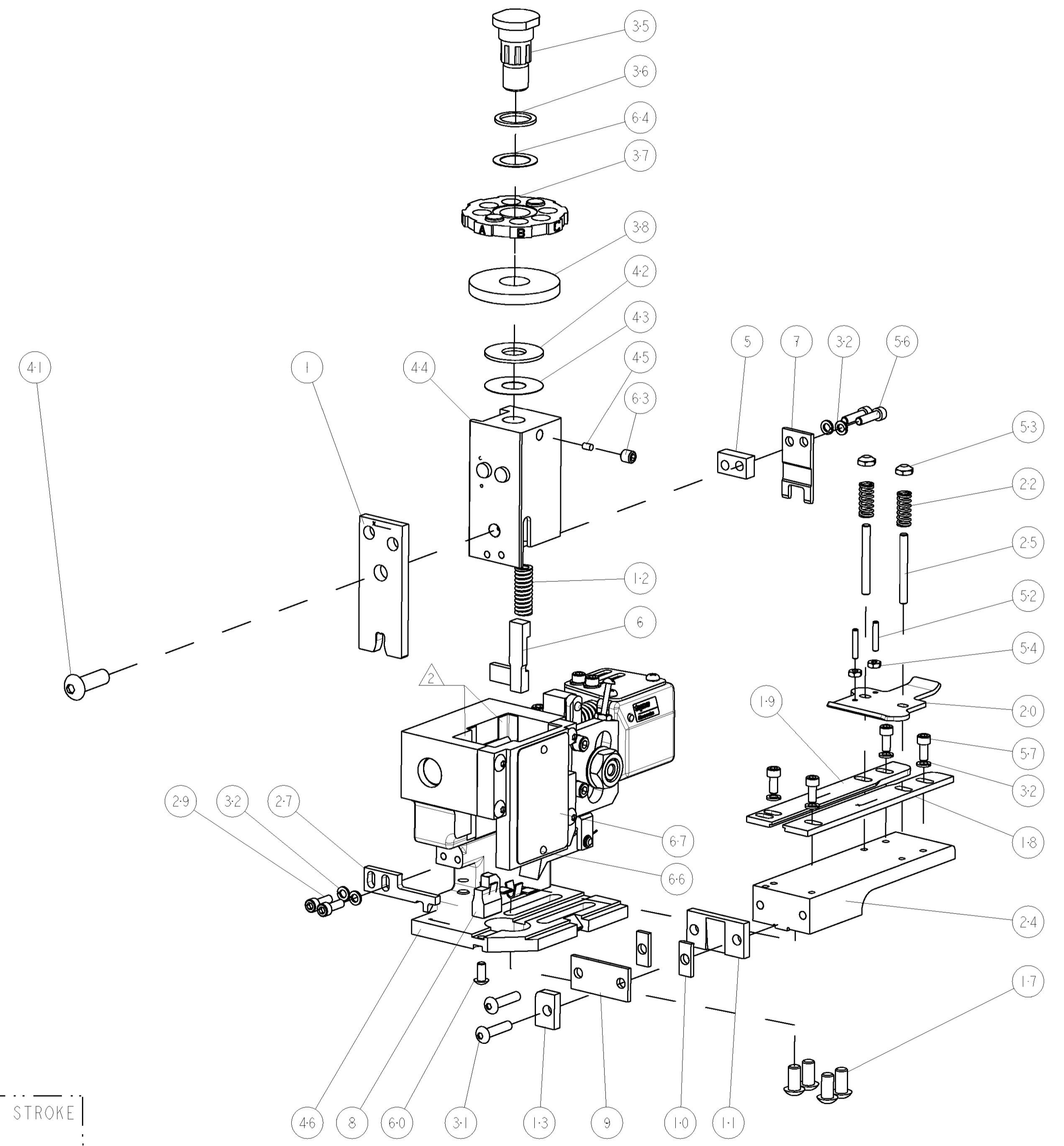
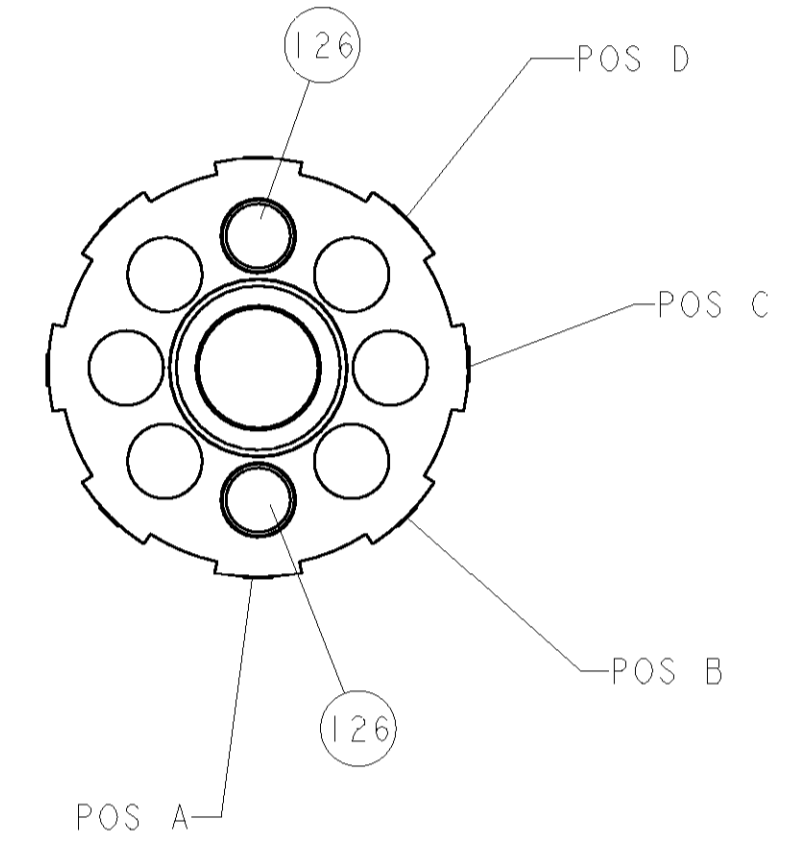
| THIS DRAWING IS UNPUBLISHED. | | RELEASED FOR PUBLICATION | | |
|--|-----|--------------------------|---------------------------|-----------|
| COPYRIGHT 20 BY TYCO ELECTRONICS CORPORATION. ALL RIGHTS RESERVED. | | | | |
| PART NUMBER | REV | FIRST USED | POWER UNIT | FEED TYPE |
| 1852288-1 | B | 122500-1 | LEADMAKER & BENCH MODEL G | POST FEED |
| 1852288-2 | B | 565435-5 | BENCH MODEL K | POST FEED |
| 7-1852288-7 | A | - | SPARE PARTS | - |

- △ RECOMMENDED SPARE PARTS
- △ GREASE LIGHTLY
- △ GUARD MUST BE IN PLACE WHEN OPERATING APPLICATOR IN A BENCH MACHINE
- △ Ø .140 NICKEL PLATED, LOW CARBON STEEL WIRE.

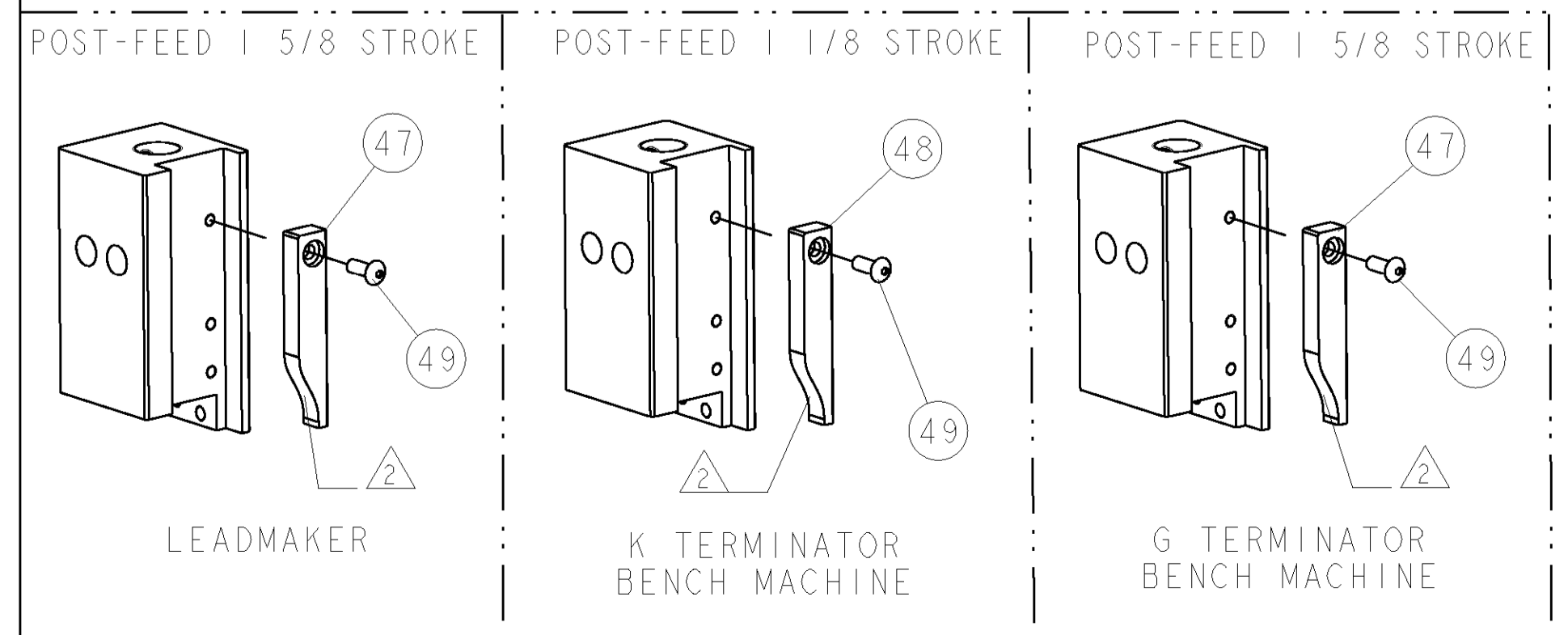


| | | | | | |
|---|----------------|--------------------------------|------------------------|-------------|---------|
| TERMINAL NAME: TAB, FASTON, .250 SERIES | | | | | |
| TYCO PN | - | AMP TERMINAL - AMP CRIMP SPECS | | | |
| 1742353-1 | - | | | | |
| 1742572-1 | - | PAD LTR | CRIMP HEIGHT | WIRE SIZE | |
| - | - | A | .150±.002[3.81±0.05mm] | Ø.14 | |
| - | - | B | - | - | |
| - | - | C | - | - | |
| - | - | D | - | - | |
| - | - | CRIMP | SIZE | TYPE | RANGE |
| - | - | WIRE | .210 [5.33mm] | F | 8-7 AWG |
| - | - | INSUL | - | - | - |
| WIRE STRIP LENGTH | TERM APPL SPEC | FEED | APPL INSTRUCTIONS | SET UP GAGE | |
| .243 -.258 | NONE | .845 | 408-8039 | 458638-1 | |

| LOC | DIST | REVISIONS | | | |
|-----|------|-----------|---------------|-----------|----|
| A | 66 | P LTR | DESCRIPTION | DATE | BY |
| | | A | RELEASED | 11OCT2006 | BH |
| | | B | ECR-07-014988 | 29JUN2007 | MY |



| | | | | | | |
|---|-----|-----|----|------------|--------------------------------------|-----|
| △ | 2 | 2 | - | 8-354778-7 | PIN, WIRE DISC, .2930 | 126 |
| △ | REF | - | .. | 455745-1 | GUARD WINDOW | 79 |
| △ | - | REF | .. | 679532-1 | INSERT, GUARD | 78 |
| | 1 | 1 | - | 217238-1 | GENERAL INSTRUCTION PKG | 72 |
| | 1 | 1 | - | 4088039 | EF APPL INST 408-8039 | 71 |
| | 1 | 1 | - | 461264-1 | PLATE, IDENTIFICATION | 67 |
| | 2 | 2 | - | 21017-2 | SCREW, DRIVE | 66 |
| | 1 | 1 | - | 986950-1 | WASHER, FLAT PRECISION | 64 |
| | 1 | 1 | - | 21009-2 | SCR, SET, SELF LOCKING 1/4-20 X .250 | 63 |
| | 1 | 1 | - | 22733-8 | SCR, BHSC, SELF-LOCKING, 8-32 X .375 | 60 |
| | 4 | 4 | - | 2-21000-6 | SCR, SKT HD CAP 8-32 X .375 | 57 |
| | 2 | 2 | - | 2-21000-8 | SCR, SKT HD CAP 8-32 X .625 | 56 |
| | 2 | 2 | - | 21018-4 | NUT, HEX, REG 4-40 | 54 |
| | 2 | 2 | - | 21022-2 | NUT, LOCK, HEX, TORQUE, 8-32 | 53 |
| | 2 | 2 | - | 2-21006-6 | SCR, SET, CUP POINT 4-40 X .625 | 52 |
| | 1 | 1 | .. | 1-21002-7 | SCR, BTN SKT CAP 6-32 X .375 | 49 |
| | 1 | - | .. | 690501-3 | CAM, POST FEED, 1 1/8 | 48 |
| | - | - | .. | 690501-4 | CAM, POST FEED, 1 5/8 | 47 |
| | 1 | 1 | - | 458980-2 | SUB ASSY, APPLICATOR FRAME | 46 |
| | 1 | 1 | - | 690191-1 | PLUG, NYLON | 45 |
| | 1 | 1 | - | 455674-1 | RAM | 44 |
| | 1 | 1 | - | 690125-1 | SHIM SUB-ASSY | 43 |
| | 1 | 1 | - | 690124-5 | WASHER, RAM (.062) | 42 |
| | 1 | 1 | - | 7-21002-9 | SCR, BTN SKT HD CAP 5/16-24 X 1.00 | 41 |
| | 1 | 1 | - | 690223-1 | SPACER, INS. | 38 |
| | 1 | 1 | - | 354777-1 | WIRE DISC, ASSEMBLY | 37 |
| | 1 | 1 | - | 22480-5 | SPRING, COMPRESSION | 36 |
| | 1 | 1 | - | 690212-1 | POST, RAM | 35 |
| | 8 | 8 | - | 21024-4 | WASHER, SPRG LOCK, REG NO 8 | 32 |
| | 2 | 2 | - | 3-21002-0 | SCR, BTN SKT HD CAP 10-32 X .875 | 31 |
| | 2 | 2 | - | 2-21000-7 | SCR, SKT HD CAP 8-32 X .500 | 29 |
| | 1 | 1 | - | 1633499-2 | STRIPPER | 27 |
| | 2 | 2 | - | 22354-8 | STUD, THREADED | 25 |
| | 1 | 1 | - | 455678-1 | PLATE, STRIP GUIDE | 24 |
| | 2 | 2 | - | 4-22281-1 | SPRING, DRAG | 22 |
| | 1 | 1 | - | 454177-1 | DRAG | 20 |
| | 1 | 1 | - | 458030-4 | STRIP GUIDE, REAR | 19 |
| | 1 | 1 | - | 458031-4 | STRIP GUIDE, FRONT | 18 |
| | 4 | 4 | - | 3-21002-3 | SCR, BTN SKT HD CAP 1/4-20 X .500 | 17 |
| | 1 | 1 | - | 690481-2 | SPACER, HOLD DOWN | 13 |
| | 1 | 1 | - | 23846-1 | SPRING, DIE | 12 |
| △ | 1 | 1 | - | 240644-1 | PLATE, REAR SHEAR | 11 |
| △ | 2 | 2 | - | 1-240645-0 | SPACER, SHEAR PLATE | 10 |
| △ | 1 | 1 | - | 2-240642-4 | PLATE, FRONT SHEAR | 9 |
| △ | 1 | 1 | - | 1633279-4 | ANVIL, COMBINATION | 8 |
| △ | 1 | 1 | - | 1-240651-6 | BLADE, SLUG | 7 |
| △ | 1 | 1 | - | 3-455892-4 | HOLD DOWN, TERMINAL | 6 |
| △ | 1 | 1 | - | 2-240641-2 | SPACER | 5 |
| △ | 1 | 1 | - | 456430-8 | CRIMPER, WIRE | 1 |



| | | | | | | | |
|--------------|--|--|--|---------------------------|--|---|--|
| DIMENSIONS: | | TOLERANCES UNLESS OTHERWISE SPECIFIED: | | DWG: B. HIGMAN 14JUN2006 | | Tyco Electronics Tyco Electronics Harrisburg, PA 17105-3608 | |
| INCHES | | 0 PLC ±.01 | | CHK: B. HIGMAN 14JUN2006 | | NAME: END FEED HDM APPLICATOR | |
| 1 PLC ±.01 | | 1 PLC ±.01 | | APPRO: J. ELBIN 14JUN2006 | | SIZE: CAGE CODE: DRAWING NO: RESTRICTED TO | |
| 2 PLC ±.01 | | 3 PLC ±.001 | | PRODUCT SPEC: - | | SCALE: 3:5 SHEET 1 OF 1 REV B | |
| 3 PLC ±.001 | | 4 PLC ±.0001 | | APPLICATION SPEC: - | | WEIGHT: - | |
| ANGLES ±.001 | | FINISH: - | | MATERIAL: - | | CUSTOMER DRAWING | |
| FINISH: - | | MATERIAL: - | | WEIGHT: - | | CUSTOMER DRAWING | |

CUSTOMER VIEWABLE ASSEMBLY