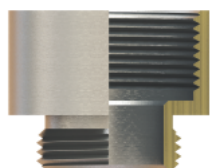
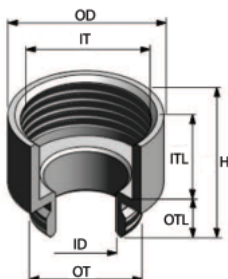
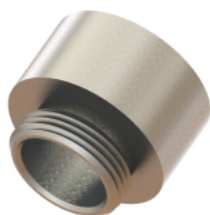
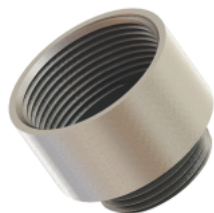


METAL ENLARGERS METRIC & PG THREAD

Enlargers are ideal when a threaded hole exists and you need to secure a larger thread or different style of thread. Made of nickel plated brass, SAB's enlargers are very durable.

Technical details:

Material:	Brass, Nickel Plated
Attachment thread:	EN 60423 (Metric) DIN 40430 (PG)



Part Number	Thread Type OT (male)	Thread Type IT (female)	Inner Thread Length ITL (mm)	Outer Thread Length OTL (mm)	Outer Diameter OD (mm)	Inner Diameter ID (mm)
PG-PG						
ENL-01	PG 7	PG 9	5.0	5.0	17.0	8.0
ENL-02	PG 9	PG 11	7.0	6.0	20.0	11.7
ENL-03	PG 9	PG 13.5	9.0	6.0	22.0	11.5
ENL-04	PG 11	PG 13.5	8.5	6.0	22.0	13.8
ENL-05	PG 11	PG 16	8.5	6.5	24.0	13.8
ENL-06	PG 11	PG 21	10.0	6.5	30.0	13.8
ENL-07	PG 13.5	PG 16	8.5	6.5	24.0	16.4
ENL-08	PG 13.5	PG 21	10.0	6.5	30.0	16.5
ENL-09	PG 16	PG 21	10.0	6.5	29.7	17.6
ENL-10	PG 16	PG 29	12.0	7.0	40.0	17.5
ENL-11	PG 21	PG 29	14.0	7.0	39.0	24.0
ENL-12	PG 29	PG 36	17.5	8.0	50.0	32.0
ENL-13	PG 36	PG 42	19.0	9.0	57.0	38.0
ENL-14	PG 42	PG 48	19.5	10.0	64.0	49.2
Metric-PG						
ENL-15	M12x1.5	PG 9	7.0	6.0	17.0	8.0
ENL-16	M16x1.5	PG 11	7.5	6.0	20.0	12.0
ENL-17	M20x1.5	PG 16	8.5	8.0	24.0	16.0
ENL-18	M25x1.5	PG 21	10.0	9.0	30.0	20.5
ENL-19	M32x1.5	PG 29	13.0	8.0	40.0	27.5
ENL-20	M40x1.5	PG 36	14.0	9.0	50.0	35.5
ENL-21	M50x1.5	PG 42	18.0	9.0	57.0	45.5
ENL-22	M63x1.5	PG 48	18.0	9.0	64.0	56.0
Metric-Metric						
ENL-23	M12x1.5	M16x1.5	7.0	6.0	18.0	8.0
ENL-24	M16x1.5	M20x1.5	10.0	6.0	22.0	12.0
ENL-25	M20x1.5	M25x1.5	8.5	7.0	27.0	16.0
ENL-26	M25x1.5	M32x1.5	9.5	8.0	34.0	20.5
ENL-27	M32x1.5	M40x1.5	8.5	8.0	42.0	26.0
ENL-28	M40x1.5	M50x1.5	15.0	8.0	52.0	35.5
ENL-29	M50x1.5	M63x1.5	9.5	9.0	65.0	45.0
Metric-NPT						
ENL-30	M16x1.5	NPT 3/8	6.5	12.0	22.0	11.0
ENL-31	M16x1.5	NPT 1/2	6.5	14.0	24.0	11.0
ENL-32	M20x1.5	NPT 1/2	8.0	14.0	24.0	15.0
ENL-33	M20x1.5	NPT 3/4	8.0	14.0	30.0	15.0
ENL-34	M25x1.5	NPT 1/2	8.0	14.0	30.0	17.0
ENL-35	M25x1.5	NPT 3/4	8.0	14.0	30.0	18.0
ENL-36	M32x1.5	NPT 1/2	8.0	14.0	35.0	17.0
ENL-37	M32x1.5	NPT 3/4	8.0	15.0	35.0	23.0
ENL-38	M32x1.5	NPT 1	8.0	17.0	37.0	27.0
ENL-39	M40x1.5	NPT 1	8.0	20.0	43.0	27.0
ENL-40	M40x1.5	NPT 1 1/4	8.0	18.0	46.0	34.0
ENL-41	M50x1.5	NPT 1 1/4	8.0	18.0	55.0	36.0
ENL-42	M50x1.5	NPT 1 1/2	8.0	19.0	55.0	41.0
ENL-43	M63x1.5	NPT 1 1/2	9.0	18.0	68.0	42.0
ENL-44	M63x1.5	NPT 2	9.0	20.0	68.0	53.0