

ITEM	PART#	DESCRIPTION	QTY	UOM
A	701070005	SL WtW Conn SR WO/MtgE Opt A 6Ckt	1	PC
B	16020107	SL Male Crp Term 22-24awg Tin Reel	6	PC
C	--	PAPER PRINTED PAPER WHITE	1	PC

FROM	TO	DESCRIPTION	COLOR
A1	--	1X22AWG DISC MPPE BK UL11028	BLACK
A2	--	1X22AWG DISC MPPE BK UL11028	BLACK
A3	--	1X22AWG DISC MPPE BK UL11028	BLACK
A4	--	1X22AWG DISC MPPE BK UL11028	BLACK
A5	--	1X22AWG DISC MPPE BK UL11028	BLACK
A6	--	1X22AWG DISC MPPE BK UL11028	BLACK

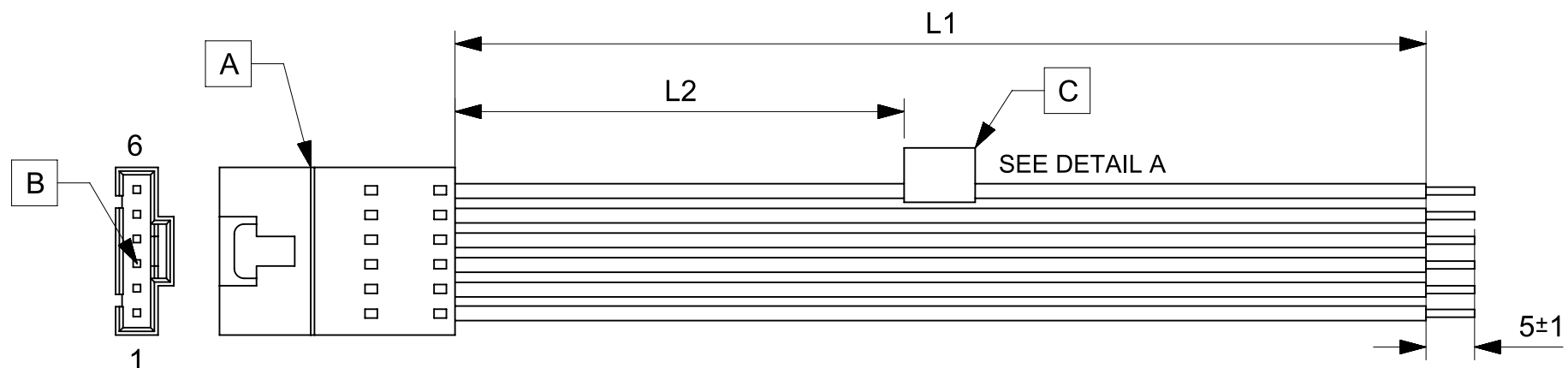


TABLE			
PART NUMBER	L1	L2	TITLE
2162731060	50±3	13 REF	SL POSITIVE LOCK P-S 6CKT 50MM Sn
2162731061	100±5	38 REF	SL POSITIVE LOCK P-S 6CKT 100MM Sn
2162731062	150±8	63 REF	SL POSITIVE LOCK P-S 6CKT 150MM Sn
2162731063	300±10	138 REF	SL POSITIVE LOCK P-S 6CKT 300MM Sn
2162731064	600±10	288 REF	SL POSITIVE LOCK P-S 6CKT 600MM Sn

- NOTES**
- Connector view shown is from mating side.
 - Free ends must be stripped, twisted & tinned. The length of tinning is 5±1mm. Tinning dia must be 0.9mm Max.
 - Label text must be 2mm max. in height with Arial font.
 - Label must be wrapped in Flag type on a single cable.

MOLEX P/N
MOLEX
BATCH WK/YR
DETAIL A

REVISION			
DATE	REV	DESCRIPTION	CHANGER
2020/05/05	A	INITIAL RELEASE	ARAJU

FUNCTIONAL SYMBOLS FA = 0 FE = 0 FP = 0	THIS DRAWING CONTAINS INFORMATION THAT IS PROPRIETARY TO MOLEX ELECTRONIC TECHNOLOGIES, LLC AND SHOULD NOT BE USED WITHOUT WRITTEN PERMISSION		CURRENT REV DESC:	
	DIMENSION UNITS	SCALE	GENERAL TOLERANCES (UNLESS SPECIFIED)	
	mm	NTS	ANGULAR TOL ± °	
	4 PLACES ±		3 PLACES ±	
DIVISIONAL SYMBOLS	EC NO: 642836		DRWN: ARAJU 2020/05/05	
	CHK'D: RDESAI01		APPR: RDESAI01 2020/08/05	
	INITIAL REVISION:		DRWN: ARAJU 2020/05/05	
	APPR: RDESAI01		2020/08/05	
DRAFT WHERE APPLICABLE MUST REMAIN WITHIN DIMENSIONS		THIRD ANGLE PROJECTION	DRAWING	SERIES
			A4-SIZE	216273
		DOCUMENT NUMBER	DOC TYPE	DOC PART
		2162731060	PSD	000
		CUSTOMER	REVISION	
		GENERAL MARKET	A	
		SHEET NUMBER		
		1 OF 1		