

GENERAL TOLERANCE

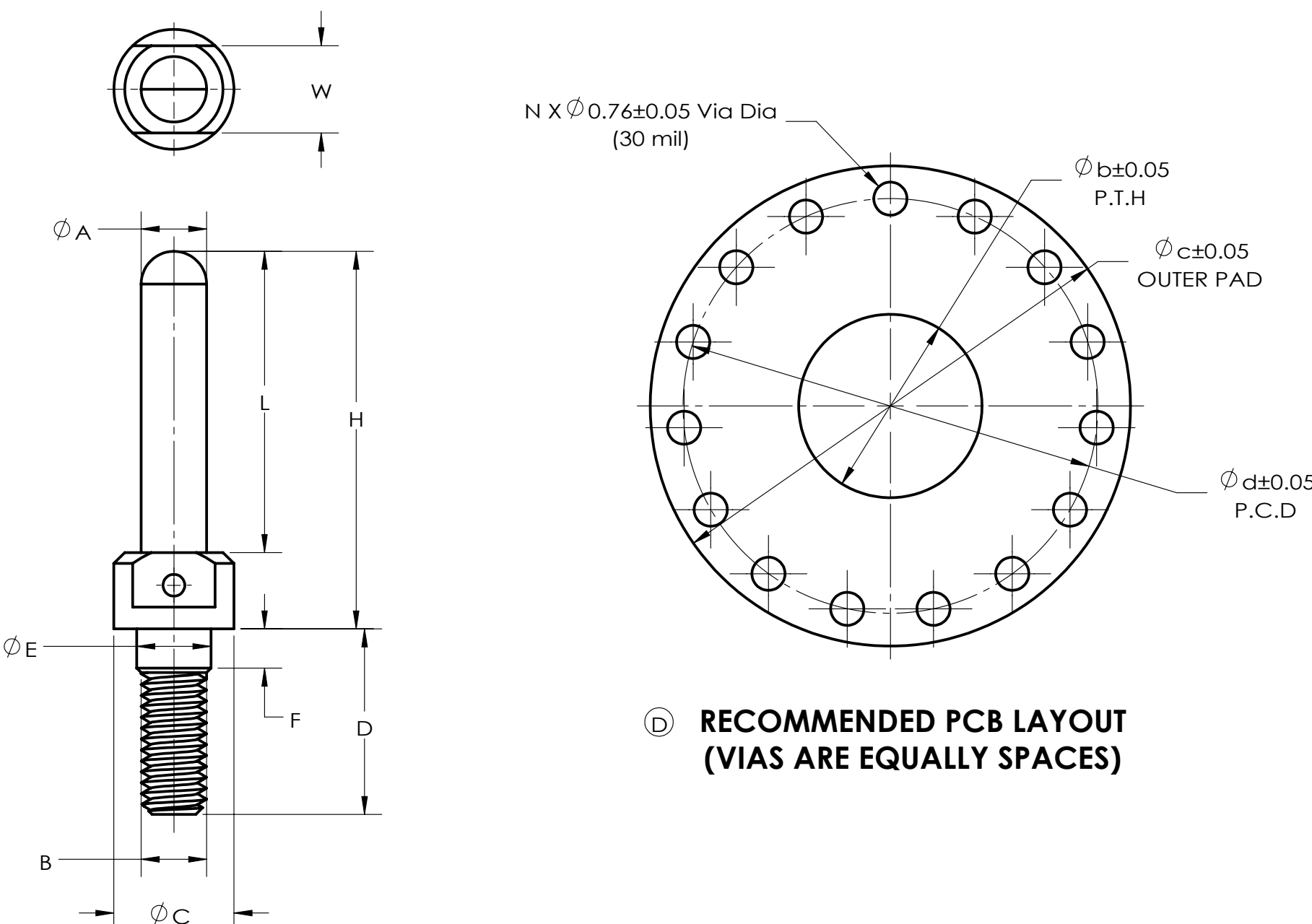
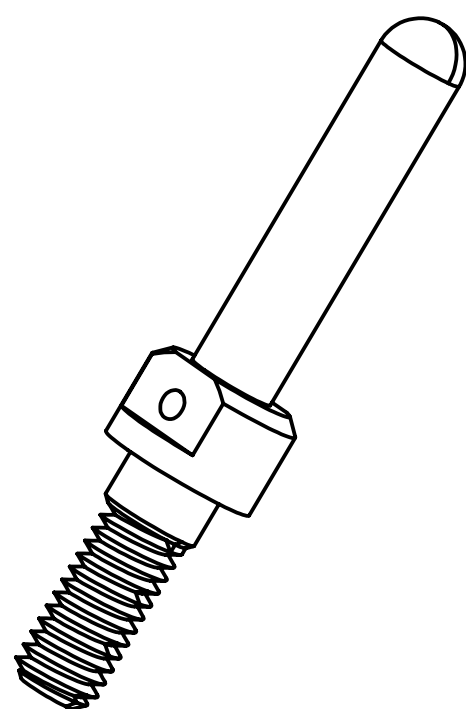
DIM. RANGE	0.5 - 3	>3-6	>6-30	>30-120	>120-400
TOLERANCE	±0.1	±0.1	±0.2	±0.3	±0.5

CUSTOMER DRAWING

REVISIONS

ZONE	REV.	DESCRIPTION	DATE
	B	UPDATED THE RATED CURRENT	2016/4/28
	C	UPDATED THE SPEC.	2017/2/17
B2	D	ADD THE RECOMMENDED PCB LAYOUT SPEC.	2019/3/19

P/N	PCB THICKNESS(mm) (SEE NOTE 3)	∅A	B	∅C	D (SEE NOTE 2)	∅E	F (SEE NOTE 2)	L (REFER TO XXX)	H (H=L+3.5)	W	RATED CURRENT	RADSOK SIZE	N (Quantity Of Vias)	b (P.T.H)	c (Outer Pad)	d (Vias P.C.D)
C10-737401-XXX	3.0	∅2.4±0.03	M3X0.5	∅5.0	8.5	∅3.4±0.08	2	EXAMPLE: 9.5	13 REF	3.5	35A	ST2.4MM	8	3.6	9.5	8
C10-737402-XXX	3.0	∅3.0±0.03	M3X0.5	∅5.5	8.5	∅3.4±0.08	2	EXAMPLE: 13.8	17.3 REF	4.0	60A	ST3.0MM	13	3.6	10	8.5
C10-737403-XXX	3.0	∅3.6±0.03	M4X0.7	∅6.5	9.5	∅4.4±0.08	2	EXAMPLE: 15.3	18.8 REF	5.0	70A	ST3.6MM	15	4.6	11	9.5
C10-737404-XXX	3.0	∅5.7±0.04	M6X1.0	∅9.0	15	∅6.4±0.08	2	EXAMPLE: 17.8	21.3 REF	7.5	120A	ST5.7MM	25	6.6	13.5	12
C10-737405-XXX	3.0	∅6.0±0.04	M6X1.0	∅9.0	15	∅6.4±0.08	2	EXAMPLE: 24.3	27.8 REF	7.5	150A	ST6.0MM	25	6.6	13.5	12
C10-737406-XXX	3.0	∅8.0±0.05	M8X1.25	∅11.5	17	∅8.4±0.08	2	EXAMPLE: 24.5	28 REF	10.0	200A	ST8.0MM	41	8.6	16.5	14.5



RECOMMENDED PCB LAYOUT (VIAS ARE EQUALLY SPACES)

- 3. WHEN CHOOSING A NEW PCB THICKNESS, A NEW PART NUMBER NEED TO BE ASSIGNED.
- 2. WHICH IS DEPENDENT ON CUSTOMER'S PCB THICKNESS.
- 1. THE REFERENCED PRODUCT SHALL BE COMPLIANT TO RoHS DIRECTIVE.

NOTES:
THIS DOCUMENT CONTAINS PROPRIETARY INFORMATION AND SUCH INFORMATION MAY NOT BE DISCLOSED TO OTHERS FOR ANY PURPOSE OR USED FOR MANUFACTURING PURPOSES WITHOUT WRITTEN PERMISSION FROM THE AMPHENOL CORP.

UNLESS OTHERWISE SPECIFIED LINEAR DIMENSIONS ARE IN: MILLIMETERS TOLERANCES: ANGLES= ±2° DEFAULT LINEAR TOLERANCES SEE TABLE DIM. & TOL. PER ASME Y14.5M-1994; DRM PER MIL-DTL-31000; OTHER AMPHENOL STANDARDS: 9-9318 LEGENDS: =FLAG NOTE CALL OUT REFERENCE THIRD ANGLE PROJECTION 	APPROVALS		DATE
	PREPARED BY:	IAN WU	2019/3/19
	LEAD/PRODUCT ENGINEER:	ROSASN HUANG	
	ENGINEERING MANAGER:	ROB WENG	
	PRODUCT GROUP:	C&I	
AIPG DIVISION:			
MATERIAL SPEC	PROCESS SPEC		
COPPER ALLOY	SILVER 150U" MIN OVER NICKEL		

AMPHENOL INDUSTRIAL OPERATIONS			
Amphenol Technology(Zhuhai)Co.,Ltd No.63, Xingnan Road, Sanzao Town, Jinwan, Zhuhai, PRC			
MATING PIN MALE THREAD TYPE			
SIZE	CAGE CODE	DOCUMENT NUMBER	REV
C	77820	10-7374(-)(-)	D
SCALE: 4:1	REF:	N/A	SHEET 1 OF 1