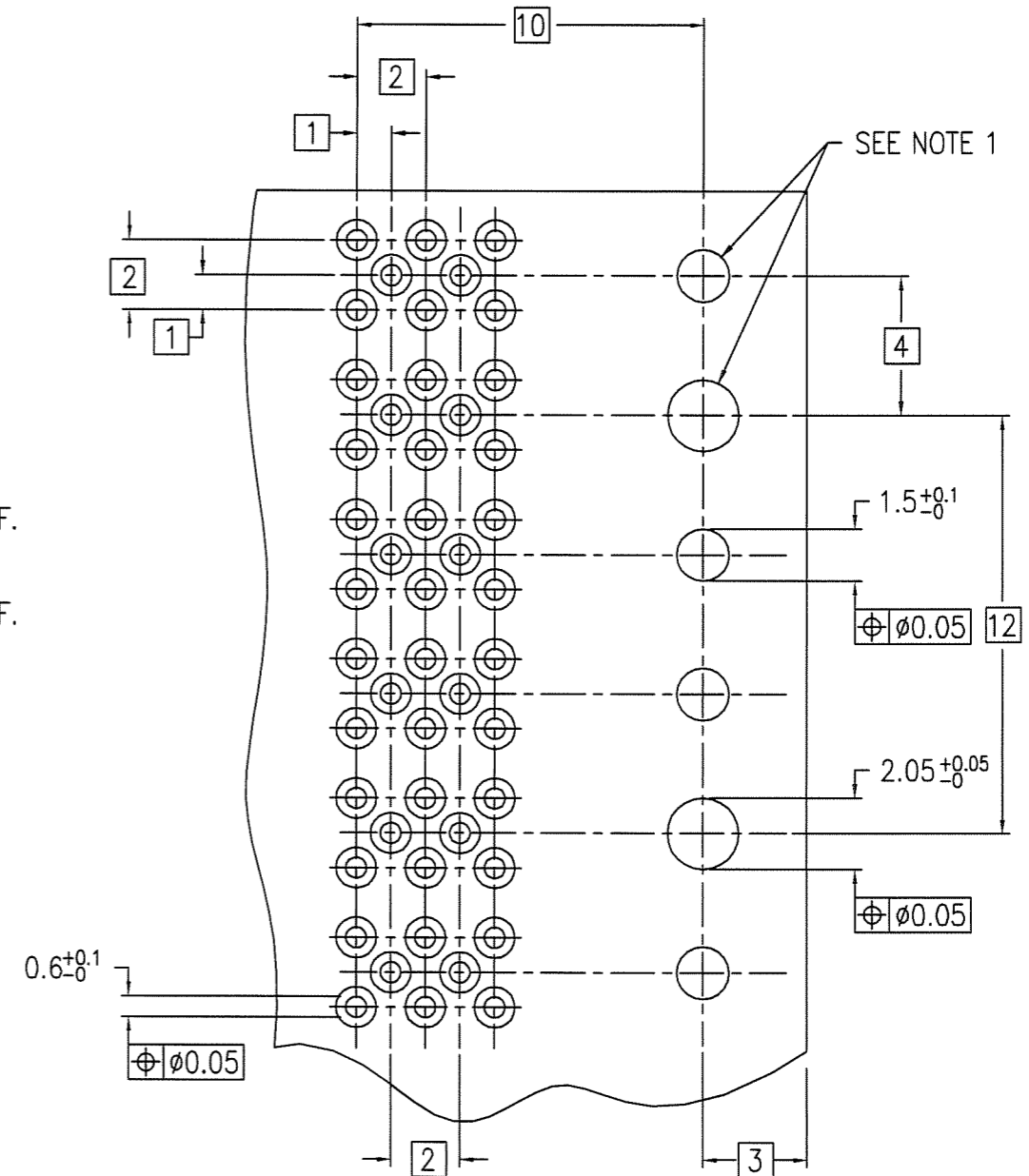
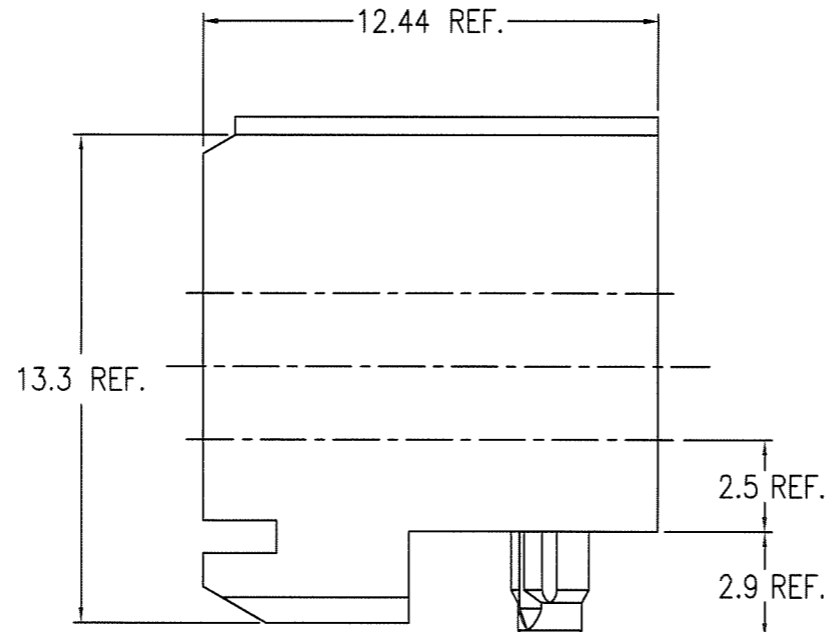
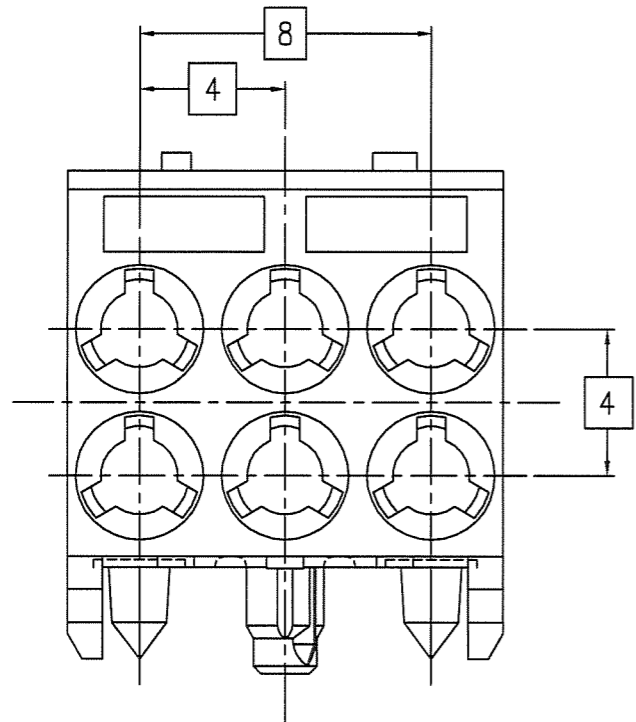
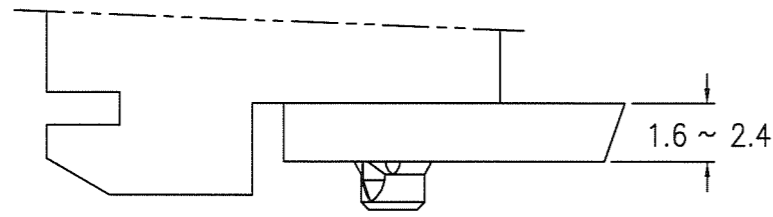


PRODUCT NO.

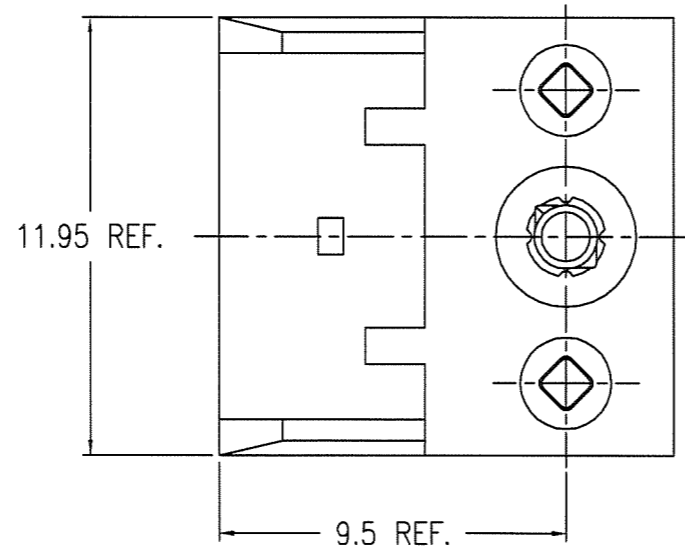
62543-102



RECOMMENDED HOLE PATTERN,
COMPONENT SIDE.



PRODUCT AFTER PC BOARD APPLICATION



NOTE :

1. INDICATED HOLES ARE UNPLATED.
2. MATERIAL :
LIQUID CRYSTAL POLYMER 30% GLASS
UL 94V-0 , COLOR NATURAL

mat'l. code				surface ISO 1302		tolerance ISO 406 ISO 1101		projection MM		product family METRAL		CODE JP
---				tolerances unless otherwise specified		linear		scale 5:1		title METRAL R/A FEMALE MINI COAX PRESS PEG		
ltr	description	ecn no	dr	date	angles	0°±2'	0.X ±0.15	0.XX ±0.15	0.XXX ±0.15	dwg no	sheet 1 of 1	size
A	RELEASED	J90210	Y.K	6/14/'99						62543		A3
B	REVISED	J07-0030	S.D	1/18/'07						type	Customer Drawing	Rev. B
dr	Y.KODAIRA	6/14/'99										
enr	S.OKUDAIRA	1/18/'07										
chr	R. Shoyji	1/18/'07										
app	S. Okudaira	1/18/'07										
sheet index	revision sheet	B	1									