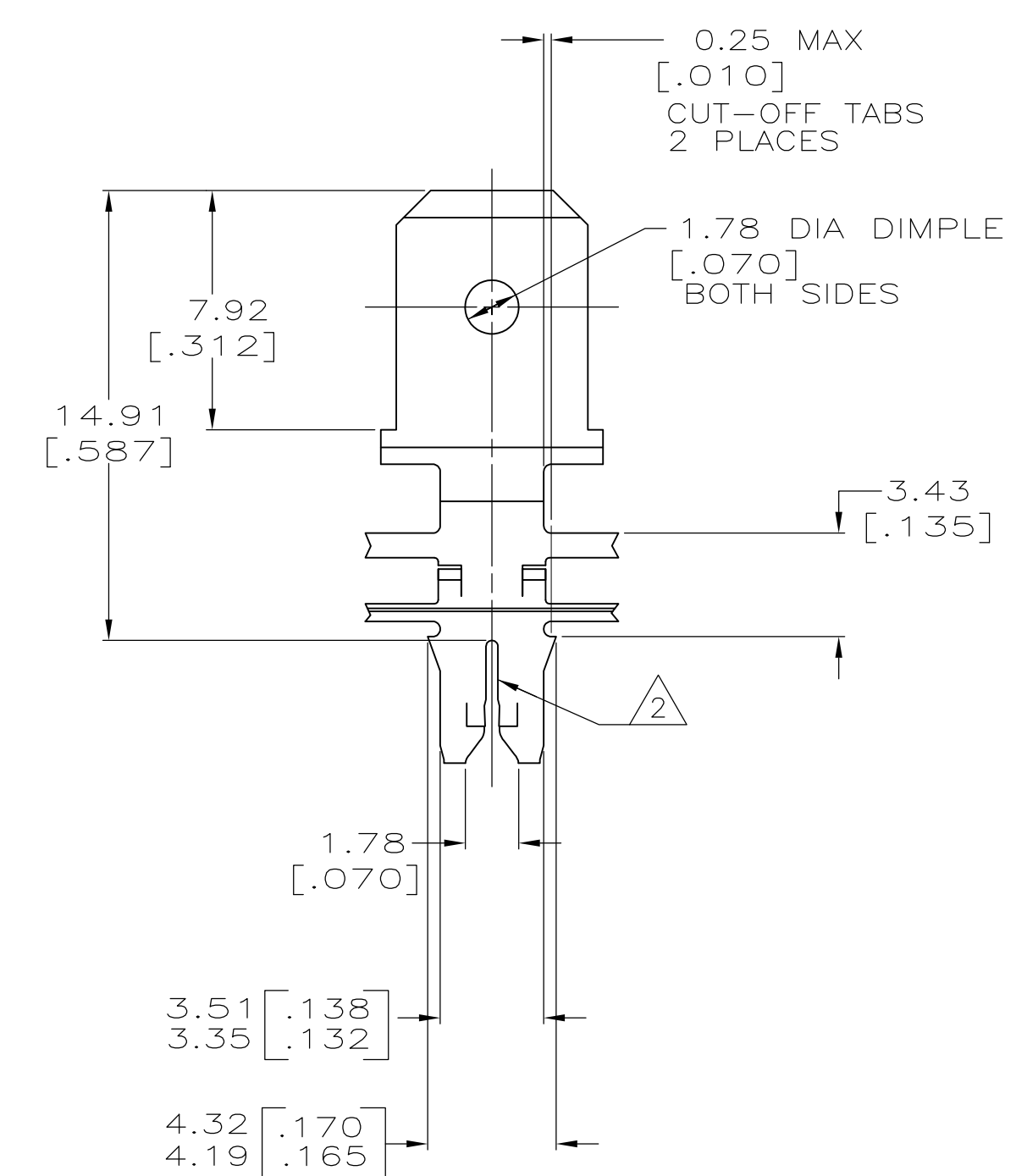
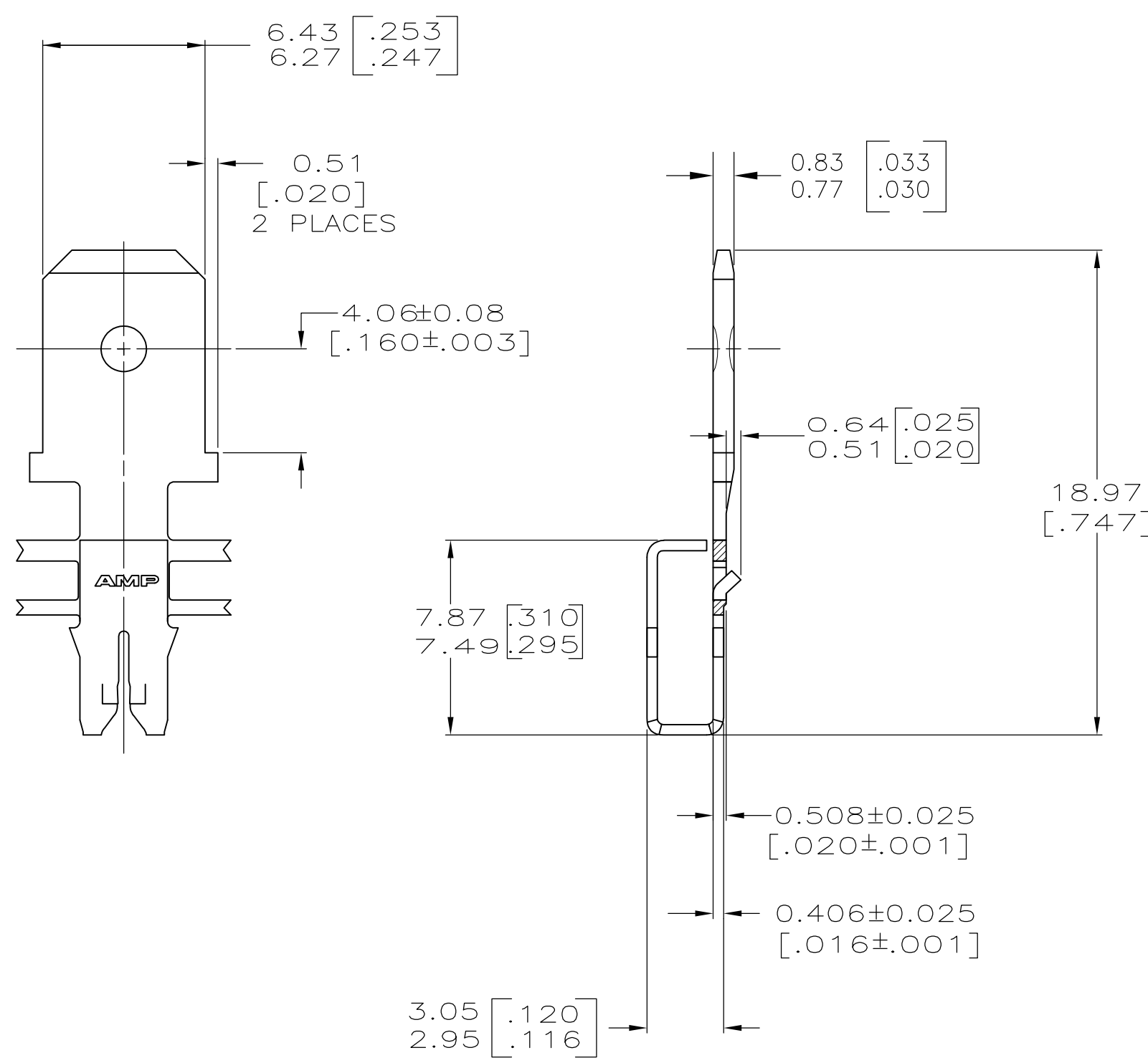


THIS DRAWING IS UNPUBLISHED. RELEASED FOR PUBLICATION
 © COPYRIGHT BY TYCO ELECTRONICS CORPORATION. ALL RIGHTS RESERVED.

LOC	DIST	REVISIONS		
AF	50	P	LTR	DESCRIPTION
				DATE
				DWN
				APVD
		B1	ECR-15-005665	10AUG2015
				BDA
				PKS



- 1 CONTINUOUS STRIP ON REELS WITH TERMINALS LOCATED ON 8.38±0.08 [.330±.003] CENTERS.
- 2 SLOT ACCEPTS A SINGLE COPPER MAGNET WIRE. WIRE RANGE: 0.57-0.81mm [#23-#20] AWG. SLOT ACCEPTS A SINGLE ALUMINUM WIRE. WIRE RANGE: 0.72-0.91mm [#21-#19] AWG. ALUMINUM WIRE RANGE APPLIES FOR POST-TIN PLATED VERSIONS ONLY.



1217870-1
 PART NUMBER

THIS DRAWING IS A CONTROLLED DOCUMENT.		DWN 30AUG2002 MICHAEL S. FEHER	STE TE connectivity
DIMENSIONS: mm [INCHES]		CHK 30AUG2002 KURT A. RANDOLPH	
TOLERANCES UNLESS OTHERWISE SPECIFIED:		APVD 30AUG2002 KURT A. RANDOLPH	NAME
0 PLC ± -		PRODUCT SPEC	108-2012
1 PLC ± -		APPLICATION SPEC	114-2067
2 PLC ± 0.25[.010]		SIZE	A2
3 PLC ± -		CAGE CODE	00779
4 PLC ± -		DRAWING NO	1217870
ANGLES ± - -		RESTRICTED TO	-
MATERIAL	FINISH	WEIGHT	SCALE
082 PRE-MILLED	0.002032[.000080]	-	5:1
CUSTOMER DRAWING		SHEET	1 OF 1
		REV	B1