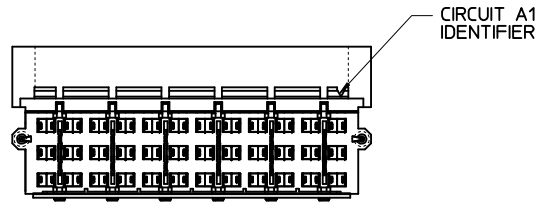
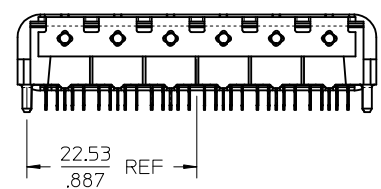
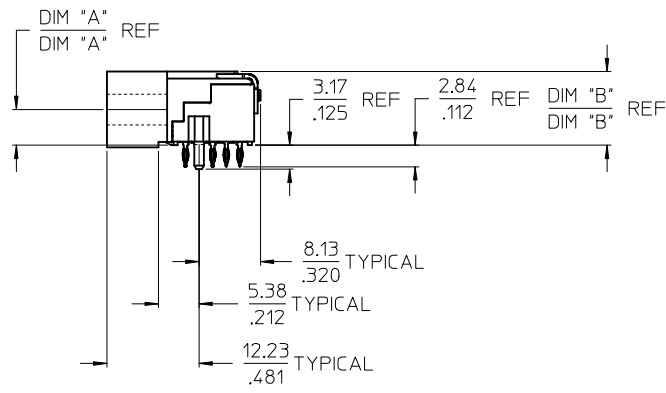
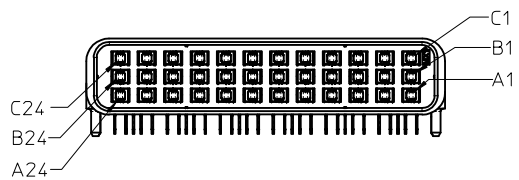
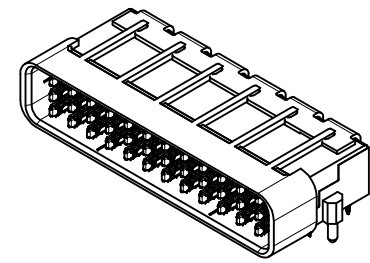
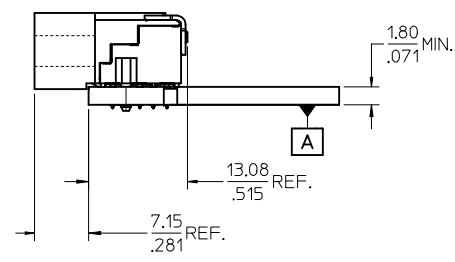
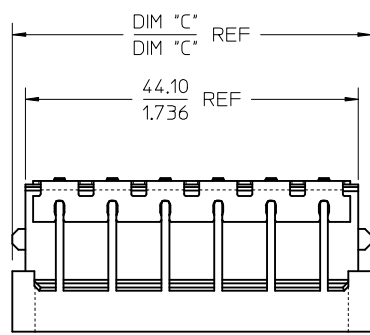


ITEM NUMBER	CIRCUIT SIZE	NO. OF COLUMNS 'N'	PLATING FINISH	CENTERLINE DIMENSION 'A' mm(in)	O/A HEIGHT DIMENSION 'B' mm(in)	O/A LENGTH DIMENSION 'C' mm(in)	PEG TO PEG DIMENSION 'D' mm(in)	FIRST-LAST DIMENSION 'E' mm(in)
75018-5100	72	12	FINISH 1	4.74 (.187)	9.78 (.385)	47.50 (1.870)	45.00 (1.722)	40.00 (1.575)

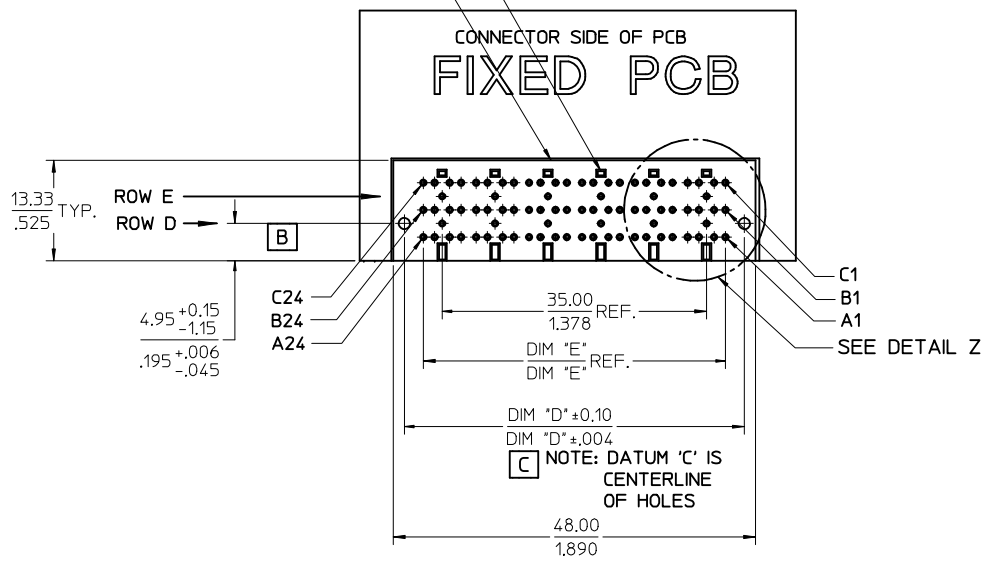


- NOTES:
- 1) MATERIALS:  
HOUSING - LIQUID CRYSTAL POLYMER, UL94 V-0  
WAFER DIELECTRIC - LIQUID CRYSTAL POLYMER, UL94 V-0  
CONTACT - COPPER ALLOY
  - 2) FINISHES: SEE SHEET 2
  - 3) PRODUCT SPECIFICATION: THIS PART CONFORMS TO MOLEX SPECIFICATION PS-75018-001.
  - 4) PACKAGING SPECIFICATION: THIS PART TO BE PACKAGED PER SPECIFICATION PK-75020-030.
  - 5) APPLICATION SPECIFICATION: THIS PART TO BE APPLIED PER SPECIFICATION PS-75018-001, APPLICATION TOOL AND INSTRUCTIONS PER AS-75018-001.
  - 6) MATING INFORMATION  
THIS PART MATES WITH 75019-XXXX.  
WILL MATE WITH MAXIMUM 1.27mm MIS-ALIGNMENT.  
WILL MATE WITH MAXIMUM 0.5° MIS-ALIGNMENT.
  - 7) FOR CIRCUIT DESIGNATION SEE SHEET 3
  - 8) FOR PCB INFORMATION SEE SHEET 3
  - 9) CIRCUITS IN THIS ZONE HAVE BEEN OMITTED TO SIMPLIFY THE MODEL. ACTUAL PRODUCT IS FULLY LOADED WITH TERMINALS.
  - 10) APPLICATION TOOLING KEEP OUT AREA, NO COMPONENTS ALLOWED IN THIS AREA.
  - 11) CONFORMS TO MOLEX COSMETIC SPECIFICATION PS-45499-002 & PS-45499-003, CLASS C.
  - 12) MARKING: PART NUMBER, MOLEX LOGO, DATE CODE
  - 13) RECOMMENDED DRILL SIZE 0.66±0.03 TO YIELD FINISHED PLATED THROUGH HOLE OF 0.55±0.005

REMOVED 75018-6100 EC NO: UCP2015-1948 DRWN:TIBARRA 2014/11/07 CHKD:MPOFF 2014/11/07 APPR:SMILLER 2014/11/11	QUALITY SYMBOLS ▽=0 ▽=0 ▽=0	GENERAL TOLERANCES (UNLESS SPECIFIED)		DIMENSION STYLE MM/IN		SCALE 2:1	DESIGN UNITS METRIC	THIRD ANGLE PROJECTION	
		mm	INCH	DRAWN BY RWHIPPLE	DATE 2014/09/09	TITLE PLATEAU HS DOCK FIXED CONNECTOR NO GROUND FINGER	DOCUMENT NO. SD-75018-5100		SHEET NO. 1 OF 2
REV: B	DESCRIPTION	ANGULAR ±1/2°		MATERIAL NO. SEE TABLE		THIS DRAWING CONTAINS INFORMATION THAT IS PROPRIETARY TO MOLEX INCORPORATED AND SHOULD NOT BE USED WITHOUT WRITTEN PERMISSION			
DRAFT WHERE APPLICABLE MUST REMAIN WITHIN DIMENSIONS		SIZE C							

- 1) PLATING FINISHES:  
 FINISH 1:  
 CONTACT INTERFACE  
 0.76 MICROMETERS/30 MICROINCHES MINIMUM SELECT GOLD  
 NICKEL UNDERPLATE OVERALL  
 COMPLIANT INTERFACE  
 0.76 MICROMETERS/30 MICROINCHES MINIMUM SELECT MATTE-TIN OVER  
 NICKEL UNDERPLATE OVERALL  
 HOUSING  
 3.81 MICROMETERS/150 MICROINCHES MINIMUM NICKEL OVER  
 COPPER UNDERPLATE OVERALL

NO EXPOSED TRACES ON  
 SURFACE OF PCB IN  
 CONNECTOR STAND OFF LOCATIONS  
 CONNECTOR KEEP OUT AREA



SEE SHEET 1 EC NO: UCP2015-1948 DRAWN: TIBARRA 2014/11/07 CHKD: MPOFF 2014/11/07 APPR: SMILLER 2014/11/11	QUALITY SYMBOLS 	GENERAL TOLERANCES (UNLESS SPECIFIED)		DIMENSION STYLE <b>MM/IN</b>	SCALE <b>2:1</b>	DESIGN UNITS <b>METRIC</b>	THIRD ANGLE PROJECTION	
		4 PLACES ± --- ± ---	DRAWN BY RWHIPPLE	DATE 2014/09/09	TITLE <b>PLATEAU HS DOCK          FIXED CONNECTOR          NO GROUND FINGER</b>			
		3 PLACES ± --- ± .005	CHECKED BY TIBARRA	DATE 2014/09/09				
		2 PLACES ± 0.13 ± .01	APPROVED BY SMILLER		DATE 2014/09/22	<b>molex</b> MATERIAL NO. SEE TABLE DOCUMENT NO. SD-75018-5100 SHEET NO. 2 OF 2		
1 PLACE ± 0.25 ± ---	DRAFT WHERE APPLICABLE MUST REMAIN WITHIN DIMENSIONS		SIZE 	THIS DRAWING CONTAINS INFORMATION THAT IS PROPRIETARY TO MOLEX INCORPORATED AND SHOULD NOT BE USED WITHOUT WRITTEN PERMISSION				