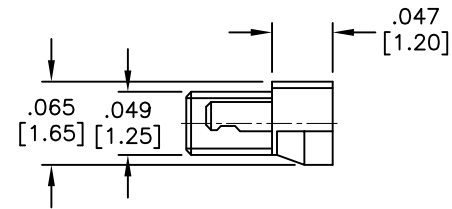
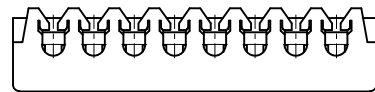
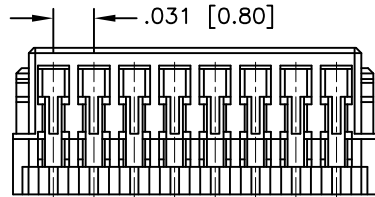
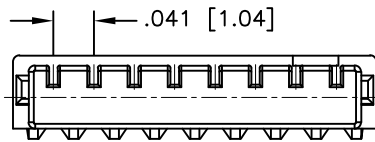
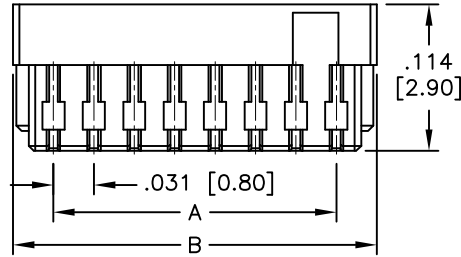


APPROVED: _____

DATE: _____ TITLE: _____

Rev	AWO #	Description	Date	Appr
-		RELEASED	3/19/07	
A	11345	REDRAWN	5/09/11	
B	11345	Revised specs, material and operating temp	9/7/12	
C	11345	REDRAWN	3/12/13	
D	11345	REDRAWN	6/14/13	
E	11345	ADDED SPEC.	3/20/14	HR/KW
F	11345	REVISED SPEC.	9/17/15	AY/MW



SPECIFICATIONS:

Material:
 Insulator: Polyamide, rated UL 94V-0,
 Insulator color: Natural
 Contacts: Copper Alloy
 Plating:
 Tin plated over Copper underplate overall
 Electrical:
 Voltage rating: 30V DC
 Current rating: 0.5A AC/DC (32 Awg wire)
 0.2A AC/DC (36 Awg wire)
 Contact resistance: 20 mohms max
 Insulation resistance: 100MΩ min
 Dielectric withstanding voltage: 200V AC for 1 minute
 Temperature Rating:
 Operating temperature: -25°C to +85°C
 Environmental:
 Lead free, RoHS compliant



Positions: 02 thru 20, 22

A = .031 [0.80] x No. of Spaces

B = .031 [0.80] x No. of Spaces + .063 [1.60]

UNLESS OTHERWISE SPECIFIED ALL DIMENSIONS ARE INCHES [MM] TOLERANCES: EXCEPT AS NOTED INCHES HOLES .X ± .10 Ø.X ± .10 .XX ± .020 Ø.XX ± .015 .XXX ± .015 Ø.XXX ± .010		ADAM TECH 909 Rahway Avenue, Union, NJ 07083 Phone: 908-687-5000 Fax: 908-687-5710		
APPROVALS DRAWN BW CHECKED APPROVED				DATE 01/17/07
TITLE 0.8mm HOUSING IDC TYPE		SIZE X	PART NO. 08CH-A-XX-IDC	REV. F
REF: S00015T		SCALE: NTS	SHEET 1 OF 1	

6

5

4

3

2

1

D

C

B

A

6

5

4

3

2

1