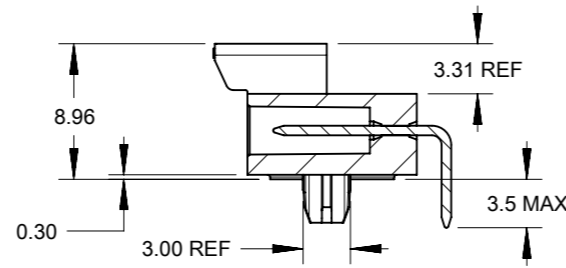
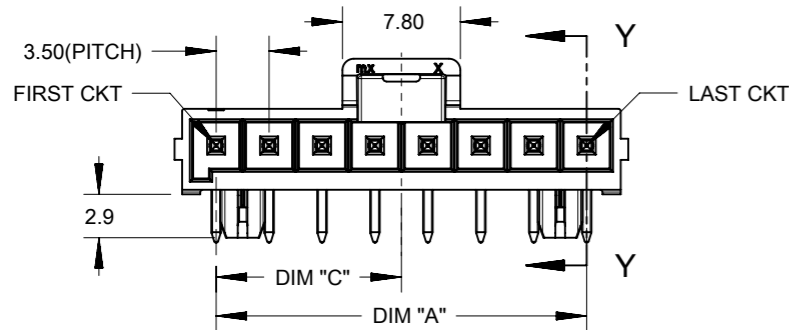
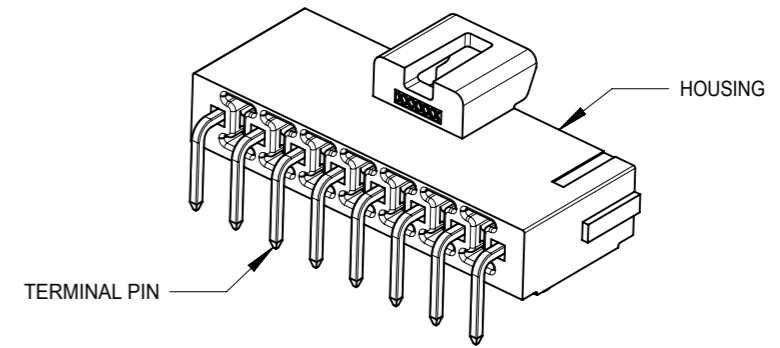
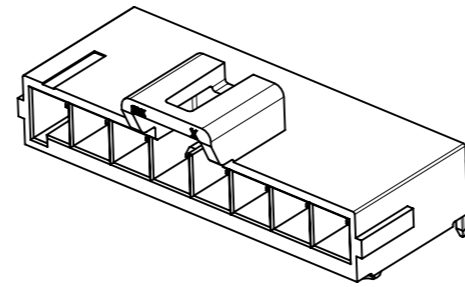
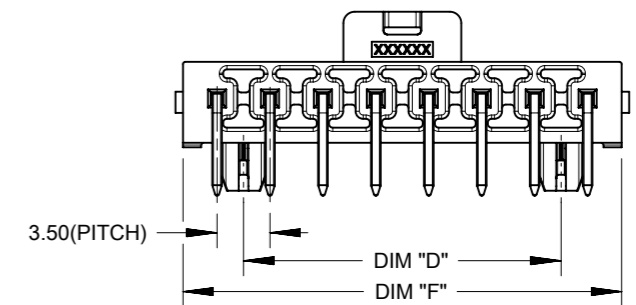


FIRST CIRCUIT MARK
(NOT SHOWING ON 2
AND 3 CIRCUITS SERIES)

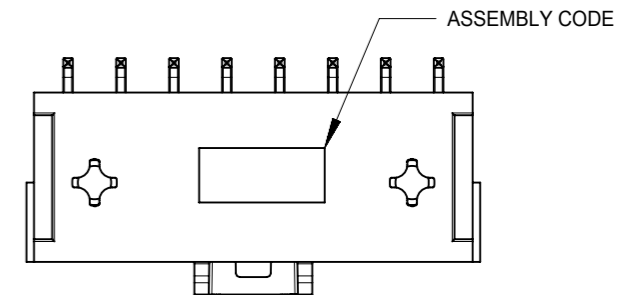
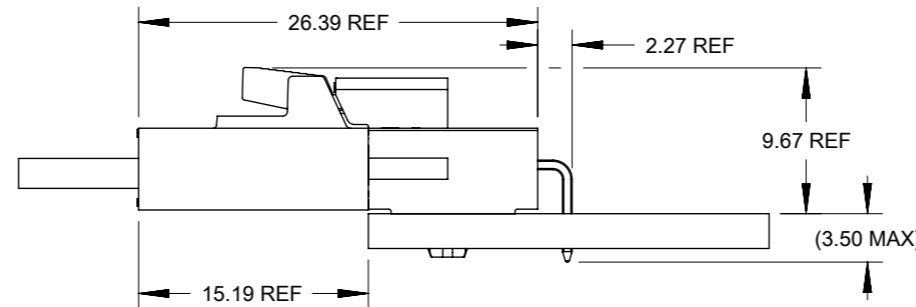


SECTION Y-Y



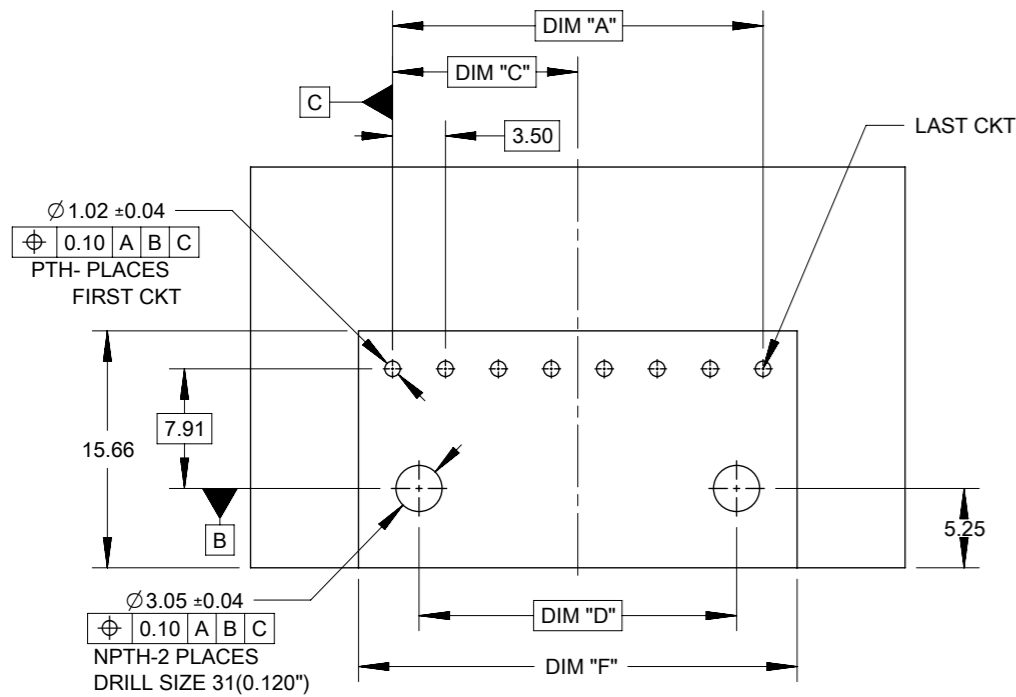
NOTES:

- MATERIAL :
HOUSING
OPTION 1: LCP BLACK, UL94 V-0
OPTION 2: LCP NATURAL, UL94 V-0
TERMINAL: COPPER ALLOY
- PLATING FINISH:
OPTION 1 - 1.5µm(60µin)-2.5µm(100µin) TIN OVER
1.25µm(50µin)-2.5µm(100µin) NICKEL OVERALL
OPTION 2 - 0.35µm(15µin) GOLD CONTACT AREA,
1.5µm(60µin)-2.5µm(100µin) TIN TAIL AREA OVER
1.25µm(50µin)-2.5µm(100µin) NICKEL OVERALL
OPTION 3 - 0.70µm(30µin) GOLD CONTACT AREA,
1.5µm(60µin)-2.5µm(100µin) TIN TAIL AREA OVER
1.25µm(50µin)-2.5µm(100µin) NICKEL OVERALL
- PARTS TO BE PACKAGED PER PK-172310-9001
- PRODUCT SPECIFICATION PS-172323-0001
- PART MATES WITH MOLEX RECEPTACLE HOUSING
172256 AND 172260
- PART CONFORMS TO CLASS "C" REQUIREMENTS OF SPECIFICATION
PS-45499-002 WITH 0.13 MM MAXIMUM FLASH ALLOWED IN CORE
HOLES AND FRONT SURFACE.
- DISCOLORATION IN THE BANDOLIER AREA OF THE PIN IS
INHERENT TO THE PLATING PROCESS AND IS DUE TO THE MASKING
EFFECT OF THE CARRIER. THIS DISCOLORATION IS IN A NON-FUNCTIONAL
AREA OF THE PIN AND WILL NOT AFFECT THE PERFORMANCE OF THE
HEADER ASSEMBLY.
- ASSEMBLY SPECIFICATION: AS-172323-0001

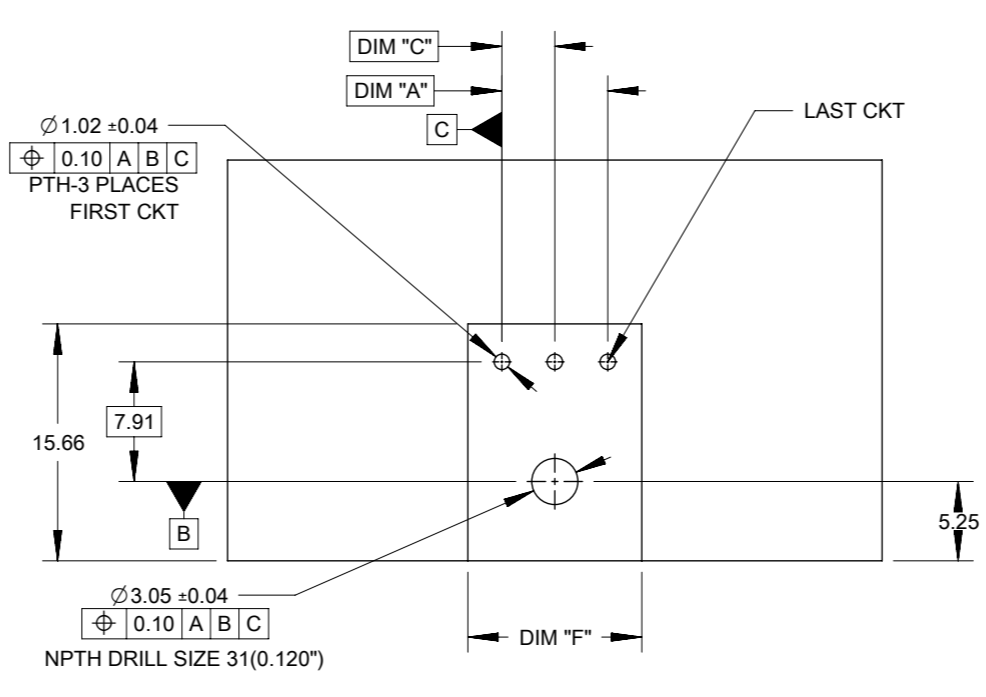


FUNCTIONAL SYMBOLS	THIS DRAWING CONTAINS INFORMATION THAT IS PROPRIETARY TO MOLEX ELECTRONIC TECHNOLOGIES, LLC AND SHOULD NOT BE USED WITHOUT WRITTEN PERMISSION		CURRENT REV DESC:		molex
	FUNCTIONAL DIMENSION UNITS	SCALE			
$\nabla_A = 0$	mm	GENERAL TOLERANCES (UNLESS SPECIFIED)		ULTRA-FIT R/A HEADER 2-8 CKTS SINGLE ROW	
$\nabla_E = 0$	ANGULAR TOL ± °		4 PLACES ±		PRODUCT CUSTOMER DRAWING
$\nabla_F = 0$	3 PLACES ±		3 PLACES ±		
DIVISIONAL SYMBOLS	2 PLACES ± 0.25		2 PLACES ±		DOCUMENT NUMBER SD-172310-1000
	1 PLACE ± 0.5		1 PLACE ±		
	0 PLACES ±		0 PLACES ±		DOC TYPE PSD
DRAFT WHERE APPLICABLE MUST REMAIN WITHIN DIMENSIONS		THIRD ANGLE PROJECTION	DRAWING	SERIES	DOC PART 000
			A3-SIZE	172310	REVISION C3
			MATERIAL NUMBER	CUSTOMER	SHEET NUMBER 1 OF 3
				GENERAL MARKET	

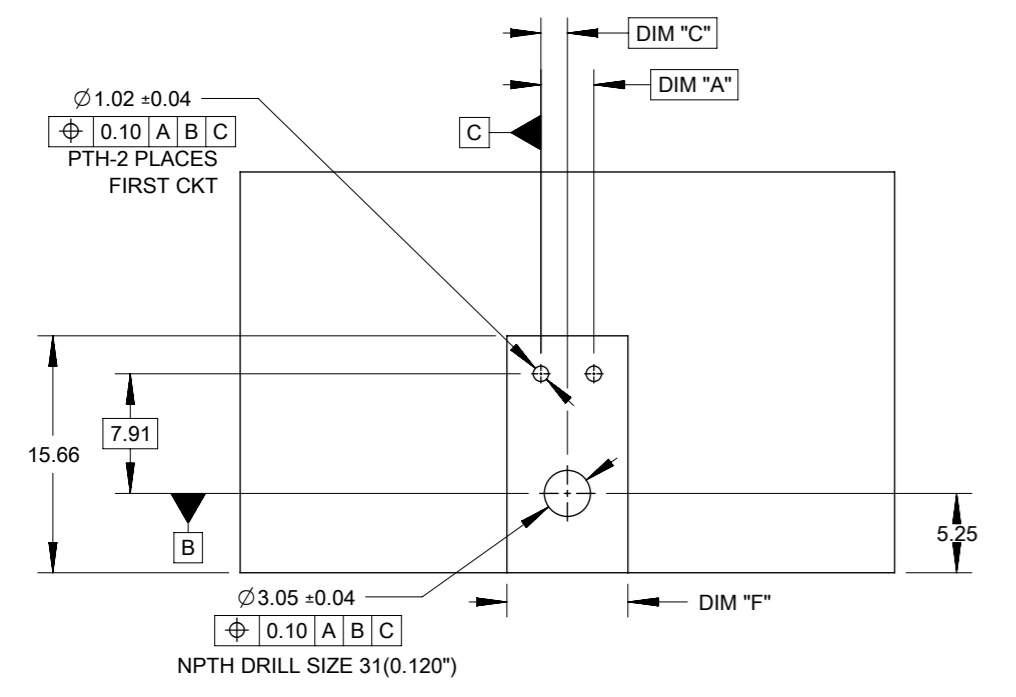
10 9 8 7 6 5 4 3 2 1



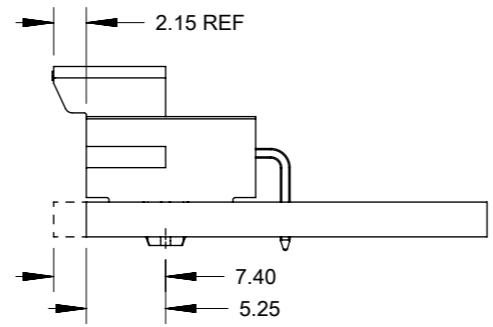
PCB LAYOUT 4,5,6,7 AND 8 COMPONENT SIDE
RECOMENDED PCB THICKNESS 1.60MM-2.40MM



PCB LAYOUT 3 CIRCUIT COMPONENT SIDE
RECOMENDED PCB THICKNESS 1.60MM-2.40MM



PCB LAYOUT 2 CIRCUIT COMPONENT SIDE
RECOMENDED PCB THICKNESS 1.60MM-2.40MM



OPTION 1: LATCH FLUSH WITH PCB EDGE
OPTION 2: HOUSING BODY FLUSH WITH PCB EDGE

NOTE: DATUM -A- IS ON PCB COMPONENT SIDE

TIN PLATING							
PART NO.	COLOR	CIRCUIT SIZE	KEY OPTION	DIM A	DIM F	DIM C	DIM D
172310-1102	BLACK	2	KEY A	3.50	8.00	1.75	0.00
172310-1103	BLACK	3	KEY A	7.00	11.50	3.50	0.00
172310-1104	BLACK	4	KEY A	10.50	15.00	5.25	7.00
172310-1105	BLACK	5	KEY A	14.00	18.50	7.00	10.50
172310-1106	BLACK	6	KEY A	17.50	22.00	8.75	14.00
172310-1107	BLACK	7	KEY A	21.00	25.50	10.50	17.50
172310-1108	BLACK	8	KEY A	24.50	29.00	12.25	21.00
172310-2102	NATURAL	2	KEY B	3.50	8.00	1.75	0.00
172310-2103	NATURAL	3	KEY B	7.00	11.50	3.50	0.00
172310-2104	NATURAL	4	KEY B	10.50	15.00	5.25	7.00
172310-2105	NATURAL	5	KEY B	14.00	18.50	7.00	10.50
172310-2106	NATURAL	6	KEY B	17.50	22.00	8.75	14.00
172310-2107	NATURAL	7	KEY B	21.00	25.50	10.50	17.50
172310-2108	NATURAL	8	KEY B	24.50	29.00	12.25	21.00

15 MICROINCH GOLD PLATING							
PART NO.	COLOR	CIRCUIT SIZE	KEY OPTION	DIM A	DIM F	DIM C	DIM D
172310-1202	BLACK	2	KEY A	3.50	8.00	1.75	0.00
172310-1203	BLACK	3	KEY A	7.00	11.50	3.50	0.00
172310-1204	BLACK	4	KEY A	10.50	15.00	5.25	7.00
172310-1205	BLACK	5	KEY A	14.00	18.50	7.00	10.50
172310-1206	BLACK	6	KEY A	17.50	22.00	8.75	14.00
172310-1207	BLACK	7	KEY A	21.00	25.50	10.50	17.50
172310-1208	BLACK	8	KEY A	24.50	29.00	12.25	21.00
172310-2202	NATURAL	2	KEY B	3.50	8.00	1.75	0.00
172310-2203	NATURAL	3	KEY B	7.00	11.50	3.50	0.00
172310-2204	NATURAL	4	KEY B	10.50	15.00	5.25	7.00
172310-2205	NATURAL	5	KEY B	14.00	18.50	7.00	10.50
172310-2206	NATURAL	6	KEY B	17.50	22.00	8.75	14.00
172310-2207	NATURAL	7	KEY B	21.00	25.50	10.50	17.50
172310-2208	NATURAL	8	KEY B	24.50	29.00	12.25	21.00

30 MICROINCH GOLD PLATING							
PART NO.	COLOR	CIRCUIT SIZE	KEY OPTION	DIM A	DIM F	DIM C	DIM D
172310-1302	BLACK	2	KEY A	3.50	8.00	1.75	0.00
172310-1303	BLACK	3	KEY A	7.00	11.50	3.50	0.00
172310-1304	BLACK	4	KEY A	10.50	15.00	5.25	7.00
172310-1305	BLACK	5	KEY A	14.00	18.50	7.00	10.50
172310-1306	BLACK	6	KEY A	17.50	22.00	8.75	14.00
172310-1307	BLACK	7	KEY A	21.00	25.50	10.50	17.50
172310-1308	BLACK	8	KEY A	24.50	29.00	12.25	21.00
172310-2302	NATURAL	2	KEY B	3.50	8.00	1.75	0.00
172310-2303	NATURAL	3	KEY B	7.00	11.50	3.50	0.00
172310-2304	NATURAL	4	KEY B	10.50	15.00	5.25	7.00
172310-2305	NATURAL	5	KEY B	14.00	18.50	7.00	10.50
172310-2306	NATURAL	6	KEY B	17.50	22.00	8.75	14.00
172310-2307	NATURAL	7	KEY B	21.00	25.50	10.50	17.50
172310-2308	NATURAL	8	KEY B	24.50	29.00	12.25	21.00

FUNCTIONAL SYMBOLS $\nabla_A = 0$ $\nabla_F = 0$ $\nabla_P = 0$	THIS DRAWING CONTAINS INFORMATION THAT IS PROPRIETARY TO MOLEX ELECTRONIC TECHNOLOGIES, LLC AND SHOULD NOT BE USED WITHOUT WRITTEN PERMISSION	CURRENT REV DESC:			
	DIMENSION UNITS: mm	SCALE:	EC NO: 693449		
	GENERAL TOLERANCES (UNLESS SPECIFIED)				DRWN: GLLI 2022/01/19
	ANGULAR TOL ± °				CHK'D: XQZHANG 2022/01/26
DIVISIONAL SYMBOLS 4 PLACES ± 3 PLACES ± 2 PLACES ± 0.25 1 PLACE ± 0.5 0 PLACES ±	APPR: XQZHANG 2022/01/26		DRWN: DROSCA 2014/03/05	PRODUCT CUSTOMER DRAWING	
	INITIAL REVISION:		APPR: JCOMERCI 2014/04/24	DOCUMENT NUMBER: SD-172310-1000	
	DRAFT WHERE APPLICABLE MUST REMAIN WITHIN DIMENSIONS		THIRD ANGLE PROJECTION	DRAWING: A3-SIZE	SERIES: 172310
	MATERIAL NUMBER		CUSTOMER: GENERAL MARKET	DOC TYPE: PSD	DOC PART: 000
SHEET NUMBER: 2 OF 3					

9

8

7

6

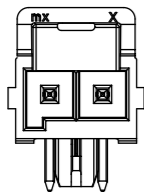
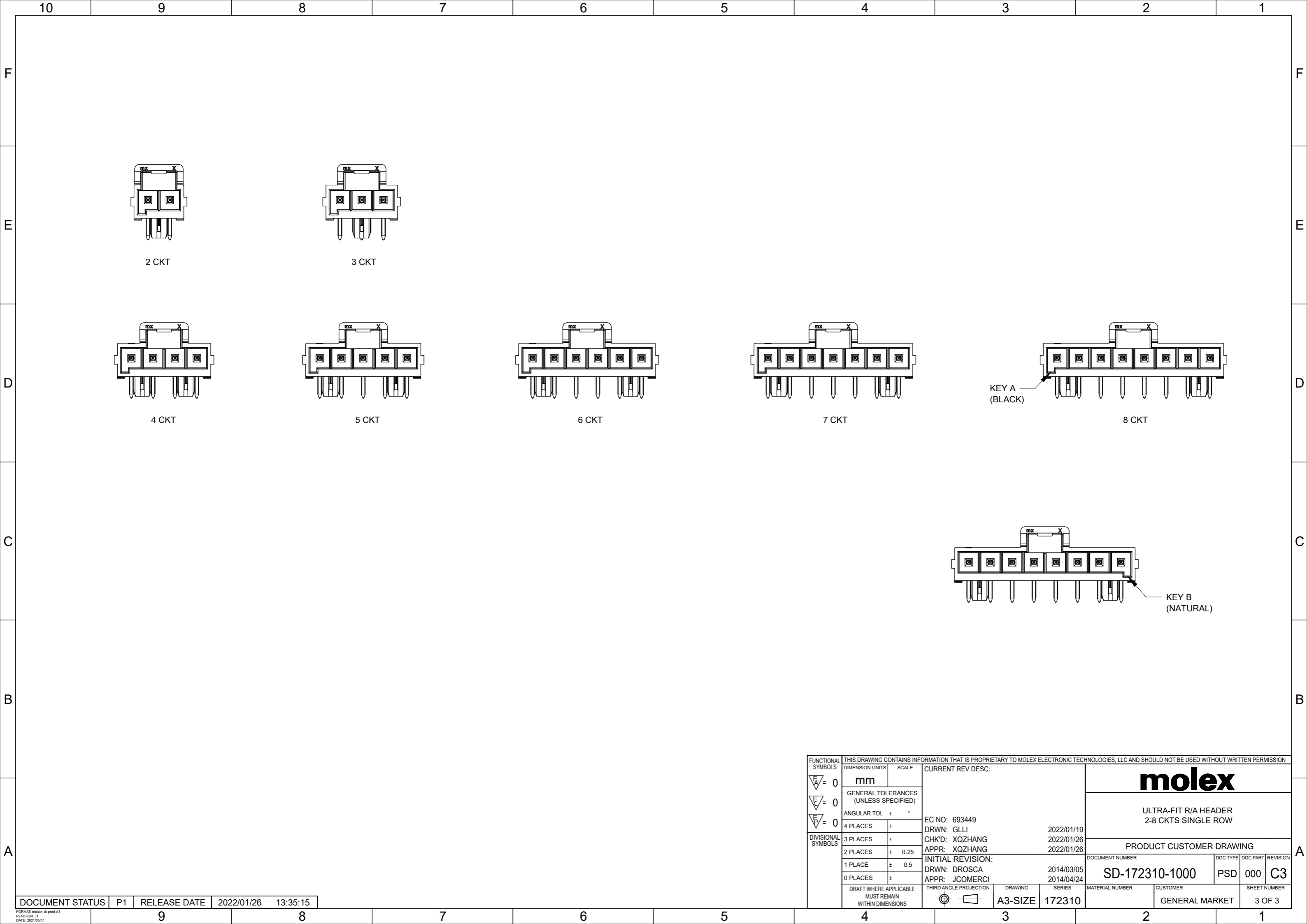
5

4

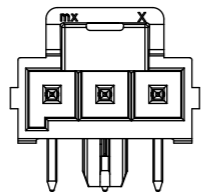
3

2

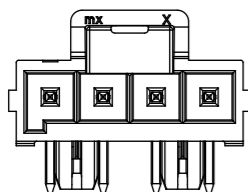
1



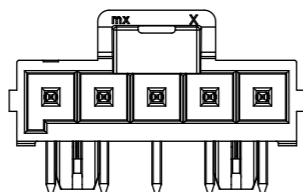
2 CKT



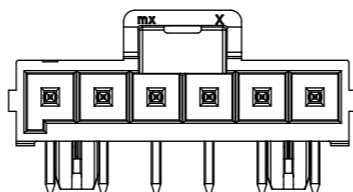
3 CKT



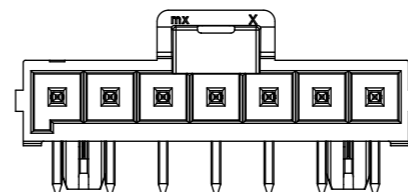
4 CKT



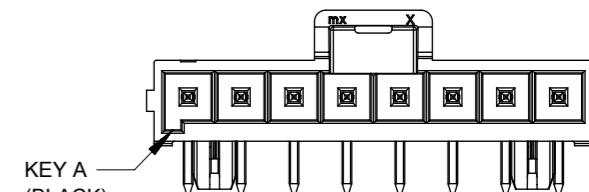
5 CKT



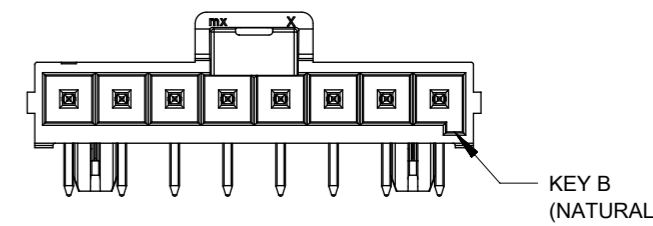
6 CKT



7 CKT



8 CKT



KEY B (NATURAL)

FUNCTIONAL SYMBOLS	THIS DRAWING CONTAINS INFORMATION THAT IS PROPRIETARY TO MOLEX ELECTRONIC TECHNOLOGIES, LLC AND SHOULD NOT BE USED WITHOUT WRITTEN PERMISSION		CURRENT REV DESC:		molex							
	DIMENSION UNITS	SCALE										
$\nabla_A = 0$	mm		EC NO: 693449 DRWN: GLLI 2022/01/19 CHK'D: XQZHANG 2022/01/26 APPR: XQZHANG 2022/01/26 INITIAL REVISION: DRWN: DROSCA 2014/03/05 APPR: JCOMERCI 2014/04/24		ULTRA-FIT R/A HEADER 2-8 CKTS SINGLE ROW PRODUCT CUSTOMER DRAWING							
GENERAL TOLERANCES (UNLESS SPECIFIED)		DOCUMENT NUMBER						DOC TYPE	DOC PART	REVISION		
$\nabla_F = 0$	ANGULAR TOL	± °						SD-172310-1000		PSD	000	C3
$\nabla_P = 0$	4 PLACES	±						MATERIAL NUMBER		CUSTOMER		SHEET NUMBER
DIVISIONAL SYMBOLS	3 PLACES	±	SERIES		GENERAL MARKET		3 OF 3					
	2 PLACES	± 0.25	DRAWING									
	1 PLACE	± 0.5	A3-SIZE									
	0 PLACES	±	172310									
DRAFT WHERE APPLICABLE MUST REMAIN WITHIN DIMENSIONS		THIRD ANGLE PROJECTION										

DOCUMENT STATUS	P1	RELEASE DATE	2022/01/26	13:35:15
-----------------	----	--------------	------------	----------