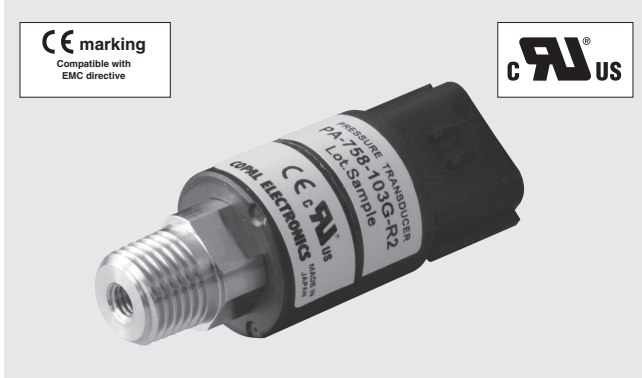


PRESSURE TRANSDUCERS WITH AMP.

PA-758



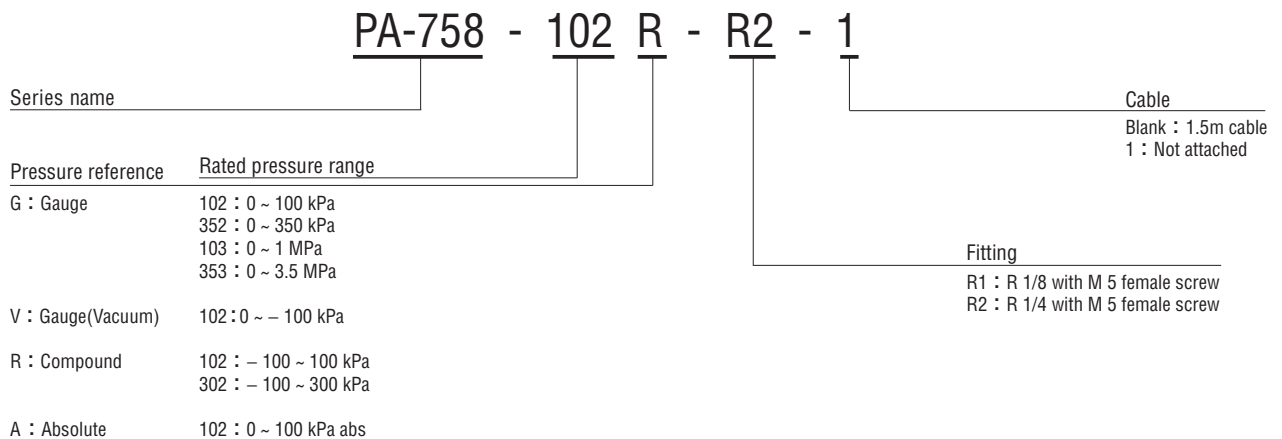
INTERNAL STRUCTURE
PA-758 (R 1/4)

| Part name | | Material |
|-----------|---------------------------|----------|
| ① | Fitting | SUS 304 |
| ② | Housing | PPS |
| ③ | Stainless steel diaphragm | SUS 316L |

FEATURES

- High corrosion resistance and drip-proof construction
Pressure port attachment made of SUS 316L
Proven IP65 grade gauge body (IP-65 in accordance with IEC)
- Cable connector connection
- Built-in temperature compensation function (0 ~ 50°C)
- Absolute pressure type and compound pressure type which can control negative to positive pressure with only a single pressure gauge are all in line
- Current output mode

MODEL NUMBER DESIGNATION



※ Please refer to the LIST OF MODEL NUMBERS when placing orders.

PA-758

PRESSURE TRANSDUCERS WITH AMP.

LIST OF MODEL NUMBERS

| Fitting | Pressure reference | | Gauge | | | | | | Absolute |
|---------|--------------------|-----------------------------|------------------------|----------------------|----------------------|------------------------|----------------------|----------------------|----------------------|
| | Cable | kPa Rated pressure range | 0 ~ 100 | 0 ~ 350 | 0 ~ 1000 | 0 ~ 3500 | 0 ~ - 100 | - 100 ~ 100 | - 100 ~ 300 |
| R1 | Attached | PA-758- ↻ 102G-R1 | PA-758- ↻ 352G-R1 | PA-758- 103G-R1 | PA-758- 353G-R1 | PA-758- ↻ 102V-R1 | PA-758- 102R-R1 | PA-758- 302R-R1 | PA-758- 102A-R1 |
| | Not attached | PA-758- ↻ 102G-R1-1 | PA-758- ↻ 352G-R1-1 | PA-758- 103G-R1-1 | PA-758- 353G-R1-1 | PA-758- ↻ 102V-R1-1 | PA-758- 102R-R1-1 | PA-758- 302R-R1-1 | PA-758- 102A-R1-1 |
| R2 | Attached | PA-758- ↻ 102G-R2 | PA-758- ↻ 352G-R2 | PA-758- 103G-R2 | PA-758- 353G-R2 | PA-758- ↻ 102V-R2 | PA-758- 102R-R2 | PA-758- 302R-R2 | PA-758- 102A-R2 |
| | Not attached | PA-758- ↻ 102G-R2-1 | PA-758- ↻ 352G-R2-1 | PA-758- 103G-R2-1 | PA-758- 353G-R2-1 | PA-758- ↻ 102V-R2-1 | PA-758- 102R-R2-1 | PA-758- 302R-R2-1 | PA-758- 102A-R2-1 |

※ Verify the above model numbers when placing orders.
The products marked ↻ are manufactured upon receipt of order basis.

STANDARD SPECIFICATIONS

● Unless otherwise specified, the specs are defined at an ambient temperature of 25 ± 5 °C and excitation voltage of 24 V DC, load resistance of 250 Ω.

| Item | Model number | PA-758 | | | | | | | | |
|------------------------|-------------------------|---------------|------------------------------------------------------------|------|------|------|-------|-------------|-------------|-----------|
| | | 102G | 352G | 103G | 353G | 102V | 102R | 302R | 102A | |
| General specifications | Pressure reference | Gauge | | | | | | | | Absolute |
| | Rated pressure range | kPa | 100 | 350 | 1000 | 3500 | - 100 | - 100 ~ 100 | - 100 ~ 300 | 100 (abs) |
| | Maximum pressure | kPa | 200 | 700 | 2000 | 5000 | 200 | 200 | 600 | 200 (abs) |
| | Break-down pressure | kPa | 300 | 1050 | 3000 | 7000 | 300 | 300 | 900 | 300 (abs) |
| | Operating temp. range | °C | - 20 ~ 70 | | | | | | | |
| | Compensated temp. range | °C | 0 ~ 50 | | | | | | | |
| | Operating humidity | %RH | 35 ~ 85 (No condensation) | | | | | | | |
| | Storage temp. | °C | - 20 ~ 80 (Atmospheric pressure, humidity 65 %RH maximum) | | | | | | | |
| | Pressure medium | | Corrosive gases/liquids compatible with SUS316L and SUS304 | | | | | | | |
| | Insulation resistance | MΩ minimum | 100 (500 V DC) | | | | | | | |
| | Dielectric strength | | 500 V AC, 60 s (Leakage current 1 mA maximum) | | | | | | | |
| | Sealed liquid | | Silicone oil | | | | | | | |
| | Pressure port | | R 1/8、R 1/4 | | | | | | | |
| | Net weight | g | R2 : Approx. 50 | | | | | | | |
| Drip-proof structure | | IP65 | | | | | | | | |
| Power | Supply voltage | V DC | 24 ± 10 % (Including ripple percentage) | | | | | | | |

PA-758

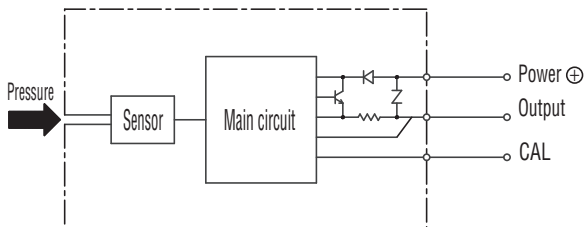
PRESSURE TRANSDUCERS WITH AMP.

| Item | | Model number | PA-758 | | | | | | |
|---------------|-------------------------------------------------------------------------|-------------------|-------------------------------------|-------|--------|----------|-------|---------|---------|
| | | | 102G | 352G | 103G | 353G | 102V | 102R | 302R |
| Analog output | Output current | mA | 4 ~ 20 mA | | | | | | |
| | Zero current | mA (at 25 °C) | 4 ± 0.2 | | | 12 ± 0.2 | | 8 ± 0.2 | 4 ± 0.2 |
| | Span current | mA (at 25 °C) | 16 ± 0.2 | | | | | | |
| | Load resistance | | 0 ~ 500 Ω | | | | | | |
| | Linearity/Hysteresis | %F.S. | ± 0.5 | | | | | | |
| | Thermal error | ZERO %F.S./°C | ± 0.05 | | | | | | |
| | | SPAN %F.S./°C | ± 0.05 | | | | | | |
| | Response | ms | Approx. 2 | | | | | | |
| | resolving power | | Approx. 0.016 mA (Approx. 0.1%F.S.) | | | | | | |
| | Gravitational effect (From horizontal position to vertical position) | %F.S. position | ± 0.3 | ± 0.1 | ± 0.05 | | ± 0.3 | | ± 0.1 |

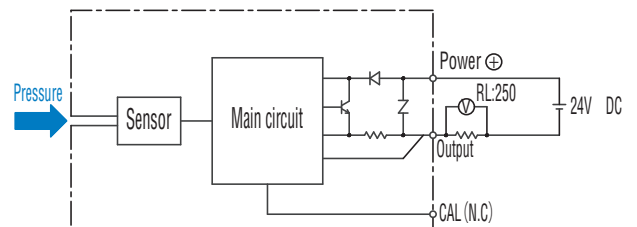
ENVIRONMENTAL CHARACTERISTICS

| Test item | Test conditions (At 25 ± 5 °C) | Permissible change |
|---------------------|--------------------------------------------------------------------------------------|-------------------------------------------------------|
| Vibration | 10 ~ 500 Hz, 1.5 mm maximum/98.1 m/s ² , 3 directions for 2 hours each | Zero current, Span current: ± 1 %F.S. maximum each |
| Shock | 490 m/s ² 3 directions for 3 times each | |
| Pressure cycling | 10 ⁶ cycles 0 ~ Rated pressure/Rated pressure range | |
| Moisture resistance | 40 °C, 90 ~ 95 %RH, 240 hrs. | |

INTERNAL ELECTRICAL SCHEMATICS



RECOMMENDED EXTERNAL SCHEMATICS



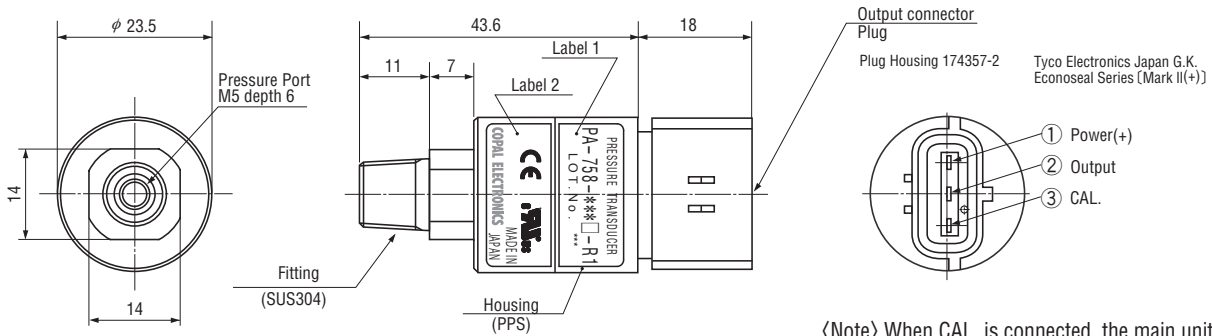
※ Do not wire the CAL connection.
It may cause malfunction when voltage is applied.

**...Calibration

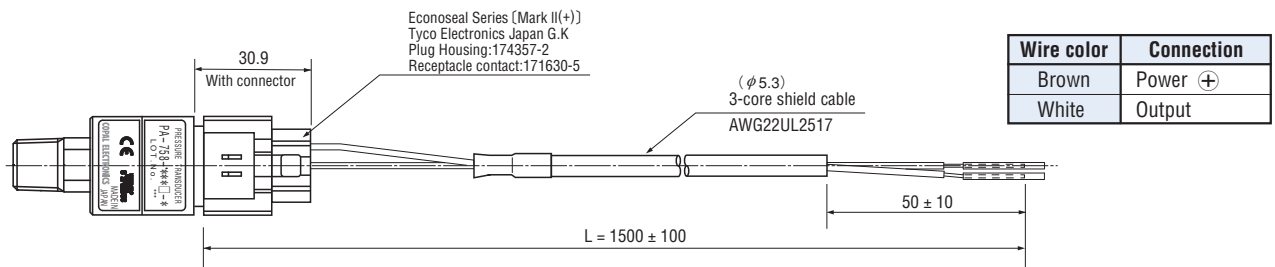
OUTLINE DIMENSIONS

Configurations of joint R1 (R1/8) type

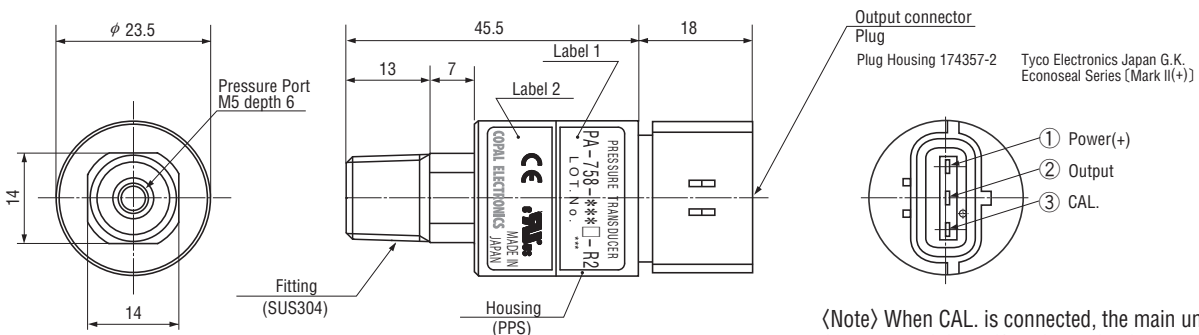
Unless otherwise specified, tolerance : 0.5 (Unit: mm)



〈Note〉 When CAL. is connected, the main unit of the sensor might malfunction or be damaged.



Configurations of joint R2 (R1/4) type



〈Note〉 When CAL. is connected, the main unit of the sensor might malfunction or be damaged.