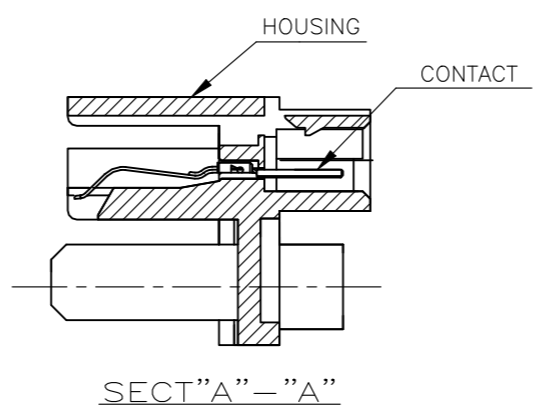
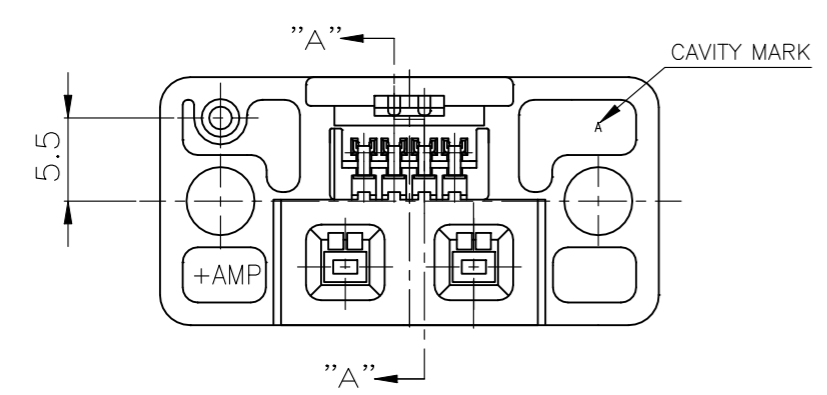
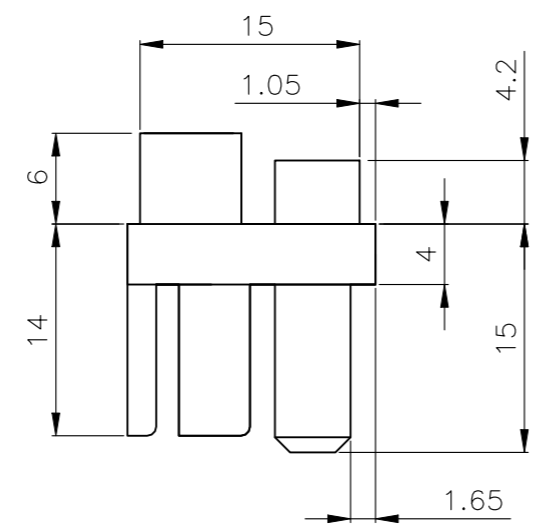
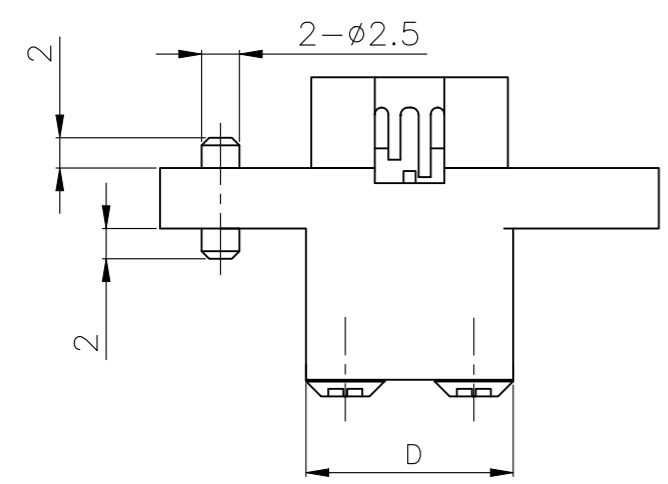
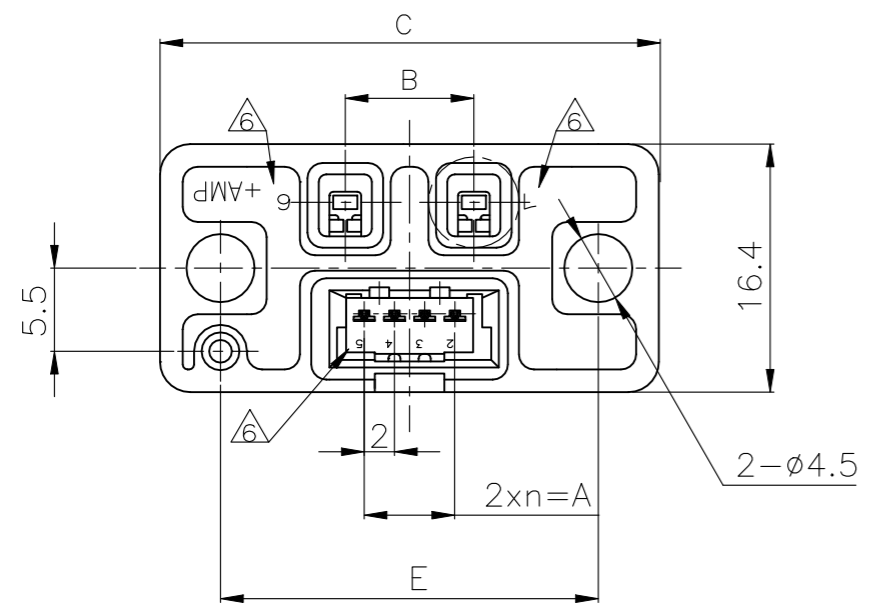
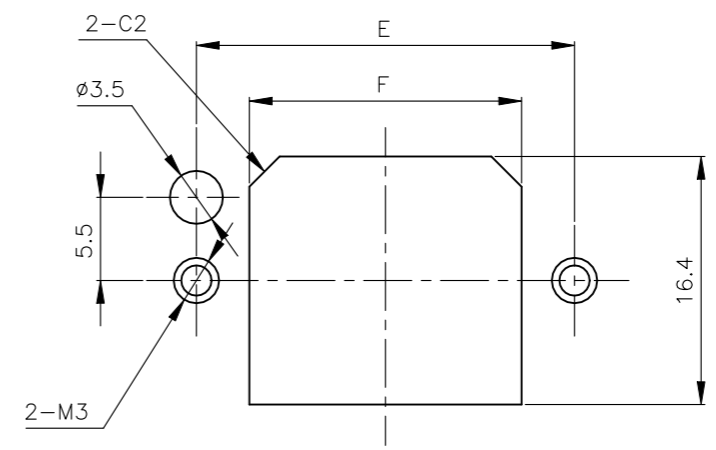


REVISIONS					
P	LTR	DESCRIPTION	DATE	DWN	APVD
	A2	REVISED ECR-22-144934	14JUL2022	SSM	S.Y



NOTES:

- 1 MATERIAL: HOUSING: THERMOPLASTIC, COLOR: BLACK 94V-0
CONTACT: COPPER ALLOY
FINISH: MATING SIDE: PLATE NICKEL OVERALL PLATE COLD
CT SIDE: PLATE NICKEL ALL OVER MATTE TIN PL.
- 2. USE UP CONTACT 175151, 175152
- 3. RECOMMENDED PANEL CUT DIMENSION



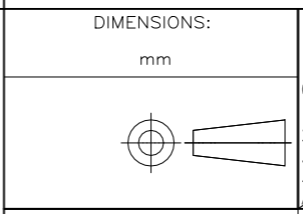
RECOMMENDED PANEL CUT DIMENSION (GENERAL TOLERANCE ±0.2)

- 4. MATING CONN: 292180
- 5. USE CT REC. CONN: 173977 & 175778
- 6. CIRCUIT NO: SEE TABLE

1,2,3,4,5,6	18	25	13.7	33	8.5	6	3	6	292184-1
6. CIRCUIT NO	F	E	D	C	B	A	n	Pos.	PART NUMBER

THIS DRAWING IS A CONTROLLED DOCUMENT.

TOLERANCES UNLESS OTHERWISE SPECIFIED	
10 > *	: ±0.2
30 > * > 10	: ±0.25
100 > * > 30	: ±0.3
ANGLE	: ±3°



TOLERANCES UNLESS OTHERWISE SPECIFIED:	
0 PLC	± -
1 PLC	± -
2 PLC	± -
3 PLC	± -
4 PLC	± -
ANGLES	± -
FINISH	SEE NOTE 1

MATERIAL: SEE NOTE 1

WEIGHT: SEE NOTE 1

DWN: J.JIANG 05FEB03

CHK: S.YAO 05FEB03

APVD: T.SASAKI 05FEB03

PRODUCT SPEC: 108-60022

APPLICATION SPEC:

WEIGHT:



RECEPTACLE ASS'Y 6POS. (2-4)
FOR HYBRID MINI DRAWER CONNECTOR

SIZE	CAGE CODE	DRAWING NO	RESTRICTED TO
A3	00779	C-292184	-

CUSTOMER DRAWING SCALE: 2:1 SHEET: 1 OF 1 REV: A2