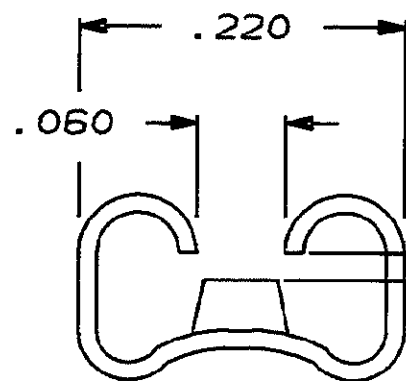
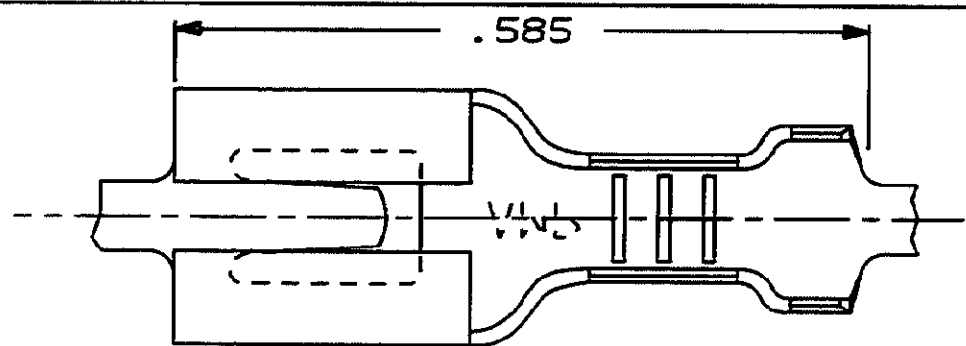


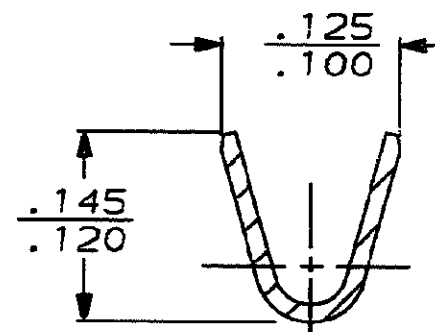
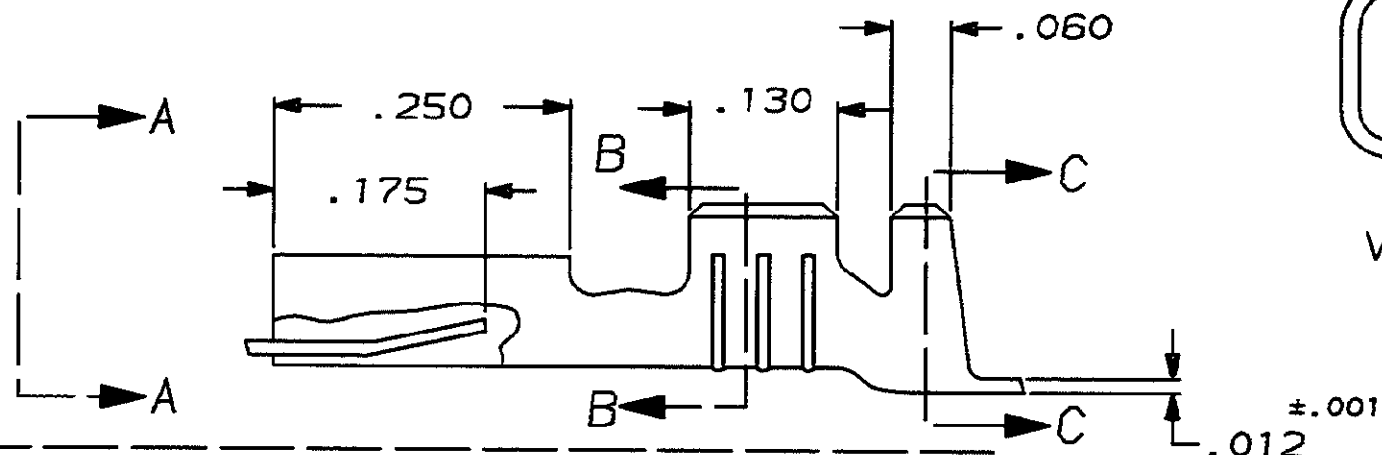
THIS DRAWING IS UNPUBLISHED. RELEASED FOR PUBLICATION .19
 © COPYRIGHT 1970 BY AMP INCORPORATED, HARRISBURG, PA. ALL INTERNATIONAL RIGHTS RESERVED. AMP PRODUCTS MAY BE COVERED BY U.S. AND FOREIGN PATENTS AND/OR PATENTS PENDING.

LOC	DIST	REVISIONS				
AF	50	P	F	ZONE	LTR	
					D	
DESCRIPTION					DATE	APPROVED
REV PER 0086-93					4/14/93	JR/JG

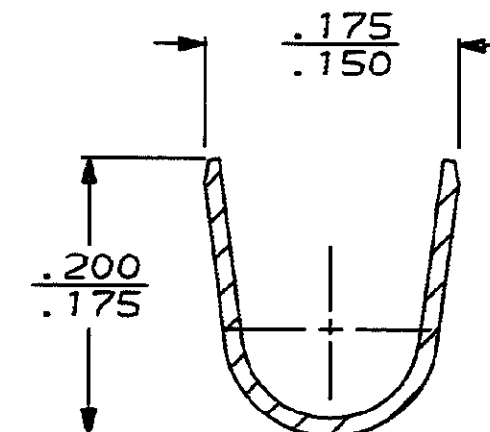


VIEW A-A

FITS .187 X .062 ± .001
FASTON TAB

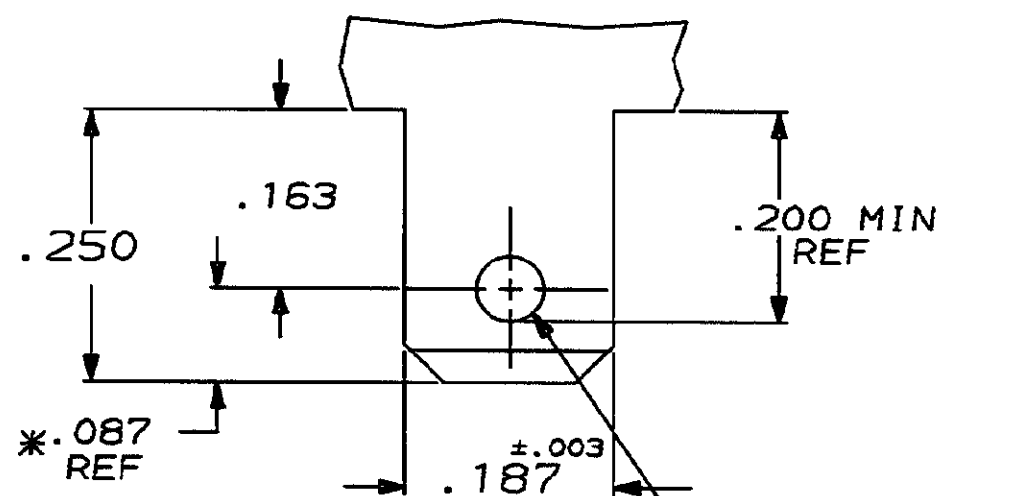


SECTION B-B



SECTION C-C

RECOMMENDED MATING TAB
 MATL: 1/2 H BRASS OR NICKEL PL STL



.080 ± .005
DIA HOLE

* TO BE USED ONLY WHEN SHOULDER IS ELIMINATED

.090-.130	20-16	61939-1
INSULATION RANGE	WIRE SIZE	PART NO

UNLESS OTHERWISE SPECIFIED DIMENSIONS ARE IN INCHES TOLERANCES ON: 2 PL DEC ± - 3 PL DEC ± .015 ANGLES ± -	DR 7/29/86 JR RUTH	AMP INCORPORATED Harrisburg, Pa. 17105	
	CHK 8/8/86 G YETTER		
MATERIAL #4H PHOS BRONZE	APPD 8/15/86 J GILLESPIE	NAME RECPT, FASTON, LOCK-ON, .187 SERIES	
FINISH	APPD 8/15/86 R RIZO	SIZE B	FSCM NO 00779
	PRODUCT SPEC	DRAWING NO 61939	
	APPLICATION SPEC	SCALE NTS	SHEET 1 OF 1
	WEIGHT		