

ITEM	PART#	DESCRIPTION	QTY	UOM
A	522130411	2.5 WATER PROOF CONN REC HOUSING ASSY	1	PC
C	501488000	2.5 W.P. CONN CRIMP PIN	4	PC
D	884260070	PAPER PRINTED PAPER WHITE (S100X150YAJ)	1	PC

FROM	TO	DESCRIPTION	COLOR
A1	--	1CX0.5 SQMM DISC PVC BK 1.6MM FLRY-B	BLACK
A2	--	1CX0.5 SQMM DISC PVC BK 1.6MM FLRY-B	BLACK
A3	--	1CX0.5 SQMM DISC PVC BK 1.6MM FLRY-B	BLACK
A4	--	1CX0.5 SQMM DISC PVC BK 1.6MM FLRY-B	BLACK

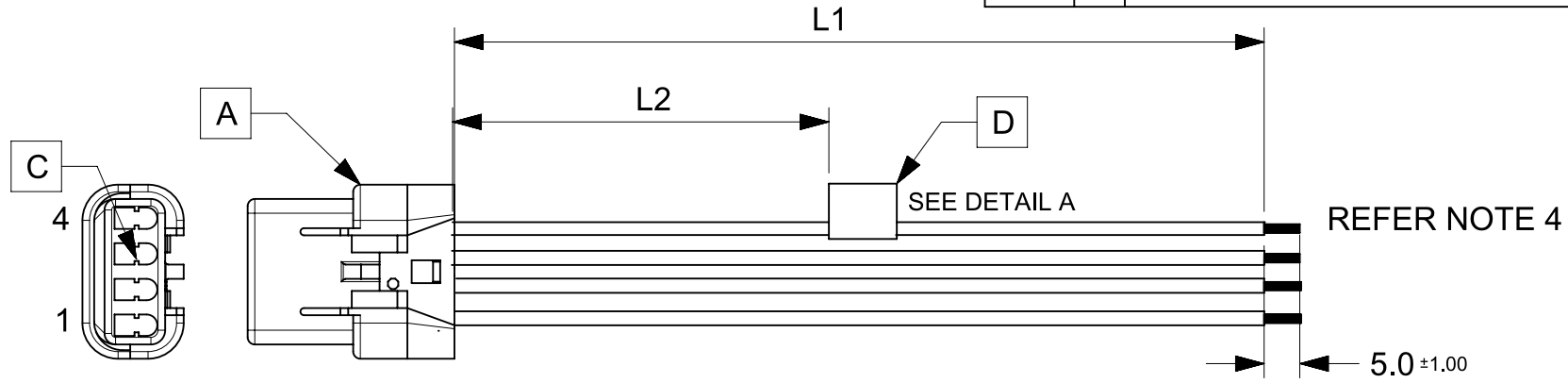


TABLE			
PART NUMBER	L1	L2	TITLE
2153111041	150±8	63 REF	MizuP25 R-S 4ckt 150mm Sn
2153111042	300±10	138 REF	MizuP25 R-S 4ckt 300mm Sn
2153111043	600±10	288 REF	MizuP25 R-S 4ckt 600mm Sn

- NOTES
- 1.Connector view shown is from mating side.
 - 2.Harness must pass 100% electrical continuity and polarity.
 - 3.Connectors must pass the sealing specifications as defined by manufacturer.
 - 4.The free ends to be stripped twisted and tinned to the length of 5±1. the tinning dia must be 1.25mm max.
 - 5.Label text must be 2mm max. in height with Arial font.
 - 6.Label must be wrapped in flag type on a single cable.

MOLEX P/N
MOLEX
BATCH WK/YR
DETAIL A

FUNCTIONAL SYMBOLS FA = 0 FE = 0 FP = 0	THIS DRAWING CONTAINS INFORMATION THAT IS PROPRIETARY TO MOLEX ELECTRONIC TECHNOLOGIES, LLC AND SHOULD NOT BE USED WITHOUT WRITTEN PERMISSION		CURRENT REV DESC:		molex
	DIMENSION UNITS mm	SCALE NTS	GENERAL TOLERANCES (UNLESS SPECIFIED)		
DIVISIONAL SYMBOLS	ANGULAR TOL ± °		EC NO: 641784		REFER THE TABLE
	4 PLACES ±		DRWN: NNANKOLA	2020/07/13	
	3 PLACES ±		CHK'D: SD	2020/07/20	PRODUCT CUSTOMER DRAWING
	2 PLACES ±		APPR: SD	2020/07/20	
	1 PLACE ±		INITIAL REVISION:		DOCUMENT NUMBER 2153111041
	0 PLACES ±		DRWN: NNANKOLA	2020/07/13	
			APPR: SD	2020/07/20	DOC TYPE PSD
DRAFT WHERE APPLICABLE MUST REMAIN WITHIN DIMENSIONS		THIRD ANGLE PROJECTION	DRAWING A4-SIZE	SERIES 215311	DOC PART 000
					REVISION A
					SHEET NUMBER 1 OF 1