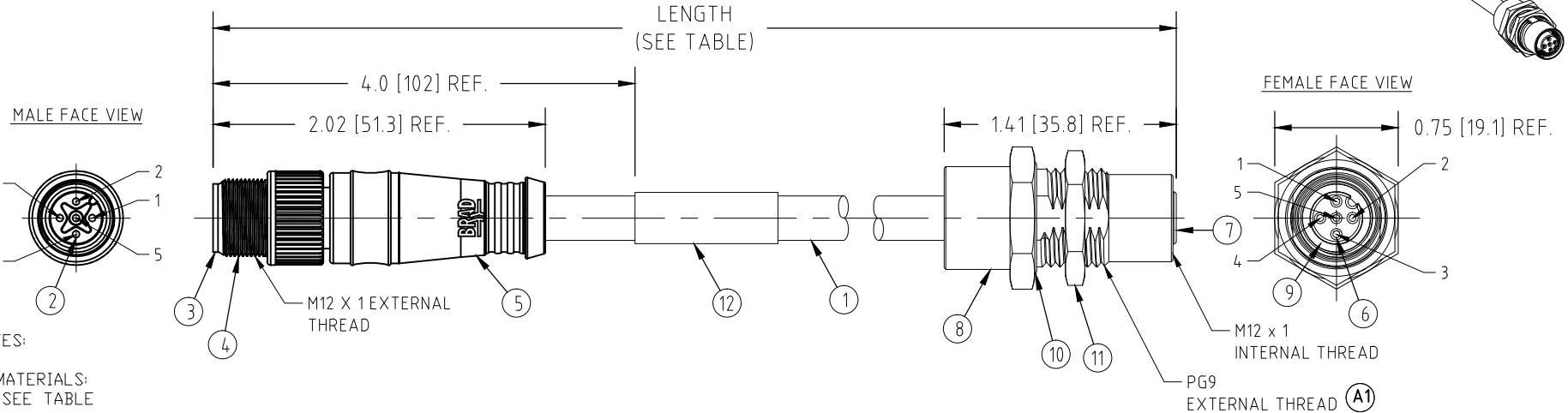
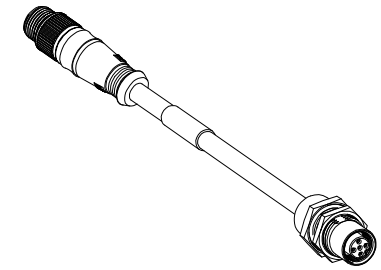
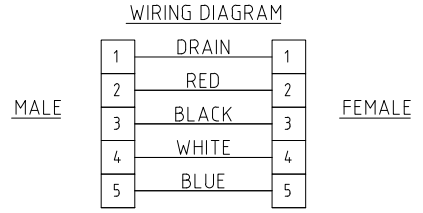


MATERIAL NUMBER	ENGINEERING NUMBER	LENGTH
130039-0230	DNDC220A-M005	0.5M +44.5mm -0 [1.64FT +1.75IN -0]



- NOTES:
- 1) MATERIALS: SEE TABLE
 - 2) FINISHES: SEE TABLE
 - 3) ELECTRICAL DATA:
MAX. VOLTAGE: 250 VAC/VDC
MAX. CURRENT: 4 AMPS
 - 4) ENVIRONMENTAL:
PROTECTION IP67
TEMPERATURE RANGE: -20°C TO 80°C
 - 5) CERTIFICATIONS:
cCSAus FILE: LR6837
 - 6) ASSEMBLY IS RoHS COMPLIANT.



ITEM	QTY.	DESCRIPTION	MATERIAL	FINISH
12	1	LABEL	PLASTIC FILM	YELLOW
11	1	PANEL NUT	BRASS	NICKEL PLATED
10	1	PANEL D-RING	NITRILE	BLACK
9	1	INTERFACE D-RING	NITRILE	RED
8	1	FEMALE RECEPTACLE SHELL	BRASS	NICKEL PLATING
7	1	FEMALE INSERT	NYLON	BLACK
6	5	SOCKET CONTACT	COPPER ALLOY	GOLD PLATING
5	1	OVERMOLD	PVC	GRAY
4	1	COUPLER	ZINC DIE-CAST	BLACK E-CDAT
3	1	MALE INSERT	NYLON	BLACK
2	5	PIN CONTACT	COPPER ALLOY	GOLD PLATING
1	1	#22/4 CABLE + DRAIN	PVC JACKET	GRAY

REMOVED FULL FROM PG9 THD. EC NO: IFC2016-1679 DRWN: GGUSTAFS 2016/06/10 CHKD: MZIELINS 2016/06/29 APPR: BWOODMAN	QUALITY SYMBOLS ▽=0 ▽C=0	GENERAL TOLERANCES (UNLESS SPECIFIED)		DIMENSION STYLE IN/MM		SCALE 1:1	DESIGN UNITS INCH	THIRD ANGLE PROJECTION	
		4 PLACES	mm ±---	INCH ±---	DRAWN BY LHARTMAN	DATE 2010/01/22	TITLE MIC CORDSET TO RCPT 5P MA ST TO FE BPM #22/4 + DRAIN PVC CABLE		
		3 PLACES	±---	±.005	CHECKED BY BWOODMAN	DATE 2010/01/27	MOLEX INCORPORATED		
		2 PLACES	±0.13	±.010	APPROVED BY	DATE	DOCUMENT NO. SD-130039-027		
1 PLACE		±0.25	±.020	ANGULAR ±1/2°		MATERIAL NO. SEE TABLE		SHEET NO. 1 OF 1	
DRAFT WHERE APPLICABLE MUST REMAIN WITHIN DIMENSIONS		SIZE A		THIS DRAWING CONTAINS INFORMATION THAT IS PROPRIETARY TO MOLEX INCORPORATED AND SHOULD NOT BE USED WITHOUT WRITTEN PERMISSION					