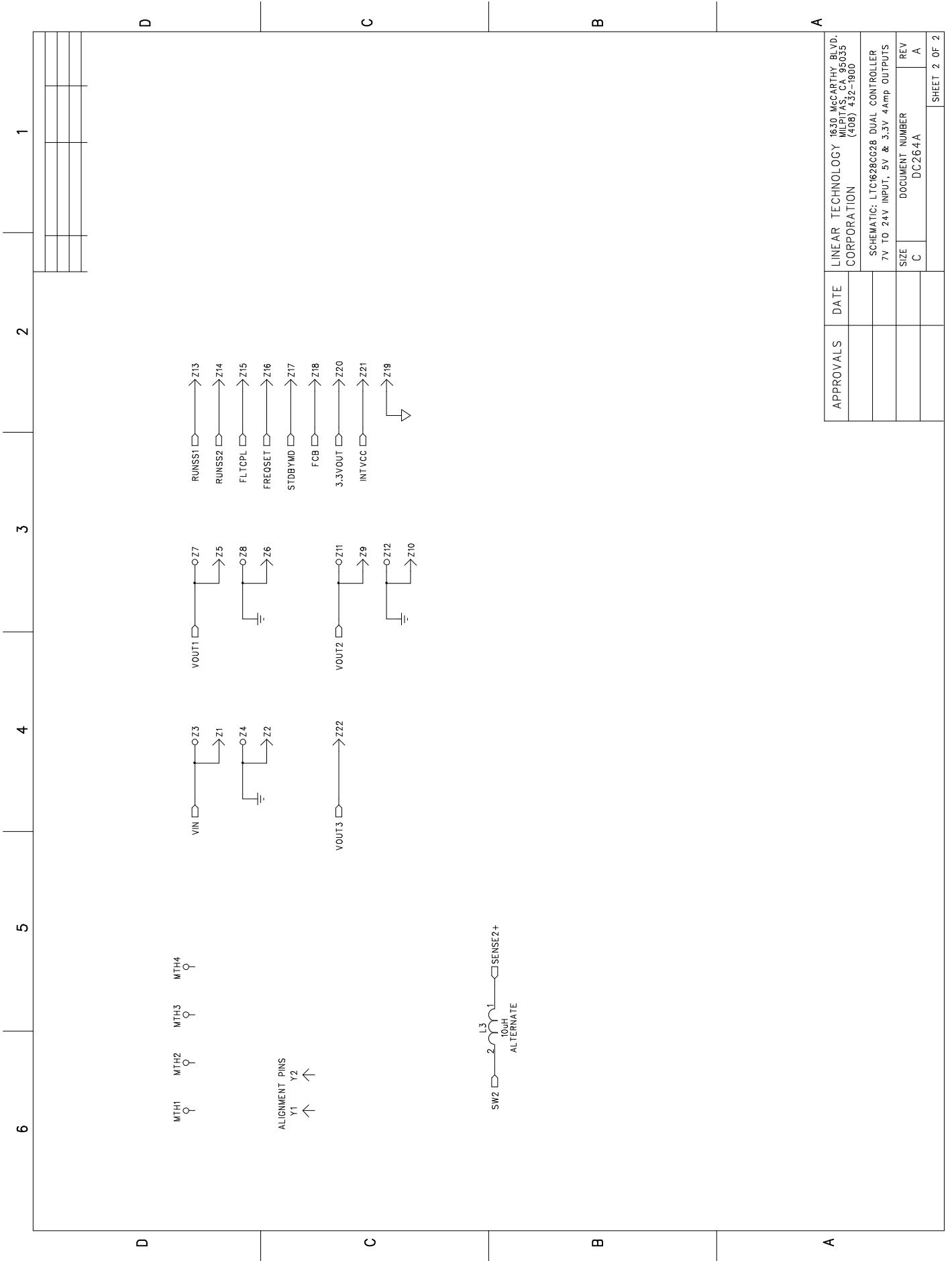


REV	DESCRIPTION	APPROVED	DATE
A	PROTO RELEASE		05-07-99

APPROVALS	DATE

LINEAR TECHNOLOGY	1630 McARTHUR BLVD.	MILPITAS, CA 95035
CORPORATION	(408) 432-1900	
SCHEMATIC: LTC1628CG28 DUAL CONTROLLER		
5V-3.3V, 5V/4A 3.3V/4A 12V/1.6A OUTPUTS		
SIZE	DOCUMENT NUMBER	REV
C	DC264A	A
		SHEET 1 OF 1

NOTES: unless otherwise specified...  
 1. ALL RESISTOR VALUES IN OHMS, 5%, 1/16W  
 THREE SIGNIFICANT DIGIT VALUES ARE 1%.  
 2. ALL CERAMIC CAPACITORS ARE X7R, 10V-50V.  
 VALUES 1000PF OR LESS ARE NPO, 25V.  
 FOR VALUES ABOVE 1uF, SEE BILL OF MATERIAL.  
 3.  
 4.



APPROVALS	DATE	LINEAR TECHNOLOGY CORPORATION
		1630 MCCARTHY BLVD. MILPITAS, CA 95035 (408) 432-1900
		SCHEMATIC: LTC1628CG28 DUAL CONTROLLER 7V TO 24V INPUT, 5V & 3.3V 4AMP OUTPUTS
		SIZE C DOCUMENT NUMBER DC264A REV A
		SHEET 2 OF 2