

| PART NUMBER | REVISION | DESCRIPTION | FEED TYPE |
|-------------|----------|--|------------|
| 2151167-1 | F | FINE CRIMP HEIGHT ADJUST | MECHANICAL |
| 2151167-2 | F | FINE CRIMP HEIGHT ADJUST | PNEUMATIC |
| 5-2151167-1 | F | SEAL STRIPPER CRIMPER TERMINATING UNIT | MECHANICAL |
| 5-2151167-2 | F | SEAL STRIPPER CRIMPER TERMINATING UNIT | PNEUMATIC |
| 7-2151167-1 | F | MECHANICAL AND CRIMP TOOLING KIT | MECHANICAL |
| 7-2151167-2 | F | PNEUMATIC AND CRIMP TOOLING KIT | PNEUMATIC |
| 7-2151167-7 | A | CRIMP TOOLING KIT | - |

ATLANTIC VERSION TERMINATOR INTERFACE ADAPTER



| APPLICATOR DATA | | |
|-----------------|----------------|------|
| CRIMP | SIZE | TYPE |
| WIRE | 1.57 mm [.062] | F |
| INSUL | 3.30 mm [.130] | O |

APPLICATOR INSTRUCTIONS 408-35042

| TERMINAL DATA: TE TERMINAL | | TE CRIMP SPECIFICATION | |
|--------------------------------------|------------------------------|------------------------|-------------|
| TERMINAL NAME: MICRO TIMER 2 CONTACT | | | |
| WIRE STRIP LENGTH | INSULATION DIAMETER RANGE | | |
| 3.20-3.80 mm [.126-.150 IN] | Ø1.20-1.60 mm [.047-.063 IN] | | |
| TERMINAL APPLICATION SPECIFICATION | (A)114-18081 | | |
| | (B)114-18082 | | |
| TERMINALS APPLIED | | | |
| TE TERMINAL | TE TERMINAL | TE SEAL | TE SEAL |
| (A) 968045-1 | (A) 968045-2 | (B) 963530-1 | Ø1.4-1.9mm |
| (A) 968045-6 | (A) 968045-7 | (A) 964971-1 | Ø1.2-1.6 mm |
| (B) 963902-1 | (B) 962964-1 | | |
| (B) 963902-2 | (B) 962964-2 | | |
| (B) 963902-3 | (B) | | |

| TERMINAL DATA: TE TERMINAL | | TE CRIMP SPECIFICATION | |
|--------------------------------------|------------------------------|------------------------|------------|
| TERMINAL NAME: MICRO TIMER 2 CONTACT | | | |
| WIRE STRIP LENGTH | INSULATION DIAMETER RANGE | | |
| 3.20-3.80 mm [.126-.150 IN] | Ø1.20-1.60 mm [.047-.063 IN] | | |
| TERMINAL APPLICATION SPECIFICATION | (A)114-18081 | | |
| | (B)114-18082 | | |
| TERMINALS APPLIED | | | |
| TE TERMINAL | TE TERMINAL | TE SEAL | TE SEAL |
| (A) 962875-1 | (A) 962875-2 | (B) 963530-1 | Ø1.4-1.9mm |
| (A) 962875-3 | (A) 962875-5 | (A) 964971-1 | Ø1.2-1.6mm |

| WIRE SIZE | CRIMP HEIGHT mm [INCH] | CRIMP HEIGHT REFERENCE SETTING |
|-----------|----------------------------|--------------------------------|
| 0.50mm2 | 1.12+/-0.03 [.044+/- .001] | 5.8 |
| 0.35mm2 | 1.05+/-0.03 [.041+/- .001] | 6.7 |
| 0.25mm2 | 1.00+/-0.03 [.039+/- .001] | 7.1 |
| 0.20mm2 | 0.98+/-0.03 [.039+/- .001] | 7.3 |

| WIRE SIZE | CRIMP HEIGHT mm [INCH] | CRIMP HEIGHT REFERENCE SETTING |
|-----------|----------------------------|--------------------------------|
| 0.50mm2 | 1.12+/-0.05 [.044+/- .002] | 5.8 |
| 0.35mm2 | 1.05+/-0.03 [.041+/- .001] | 6.7 |

- RECOMMENDED SPARE PARTS
- REFER TO SUPPLIED INSTRUCTION SHEET FOR CLEANING, LUBRICATION AND STORAGE OF APPLICATOR.
- APPLY PART NUMBER 2-23419-6 LOCTITE TO THREADS OF ITEM 242.
- CRIMP HEIGHT REFERENCE SETTING WAS THE SETTING USED WHEN THE APPLICATOR WAS QUALIFIED AT THE FACTORY. ADJUSTMENT MAY BE NECESSARY WHEN RUNNING APPLICATOR IN THE FIELD.
- APPLY TORQ-SEAL IN ALLEN SOCKET TO FILL HOLE AFTER FLAT HD HAS BEEN ADJUSTED TO CORRECT HEIGHT AT QUALIFICATION. APPLY #1-23419-5 LOC-TITE TO THREADS.
- UNLESS SPECIFIED OTHERWISE TORQUE VALUES SHALL BE USED PER DOCUMENT, 101-35000.
- TERMINAL LUBRICANT IS RECOMMENDED.

***WARNING**
 ON INSTALLATION, SET WIRE DISC TO CRIMP HEIGHT REFERENCE SETTING FOR LARGEST WIRE SIZE. CRIMP HEIGHT REFERENCE SETTINGS GREATER THAN THE VALUE SHOWN MAY CAUSE DAMAGE TO THE CRIMP TOOLING, REFER TO THE INSTRUCTION SHEET FOR PROPER SETUP AND ADJUSTMENTS.

ATLANTIC VERSION
 Shown on sheets 1 of 4 & 2 of 4
 (Pacific version shown on sheets 3 of 4 & 4 of 4)

| LOC | DIST | REVISIONS | | | | | |
|-----|------|-----------|-----|---------------|-----------|-----|------|
| A | 66 | P | LTN | DESCRIPTION | DATE | OWN | APVD |
| | | E | | ECR-19-010979 | 15JUL2019 | FZ | TE |
| | | E1 | | ECR-21-006043 | 04JUN2021 | LJ | YY |
| | | E2 | | ECR-22-138928 | 12MAY2022 | FZ | JAH |
| | | F | | ECR-23-165684 | 01MAR2023 | LG | TE |

| | | | | | | | | | |
|---|-----|-----|-----|-----|-----|-----|-------------|-------------------------------------|-----|
| - | 1 | 1 | 1 | 1 | 1 | 1 | 1803945-4 | TONKER | 300 |
| - | 1 | 1 | 1 | 1 | 1 | 1 | 22278-9 | SPRING, COMPRESSION | 299 |
| - | 2 | 2 | 2 | 2 | 2 | 2 | 4-18032-3 | SCR, SET, FLT PNT, M3 X 6.0 | 298 |
| - | 1 | 1 | 1 | 1 | 1 | 1 | 1803944-1 | SPACER, TONKER | 297 |
| - | - | - | 1 | 1 | - | - | 2-1803583-1 | APPLICATOR BASIC ASSEMBLY, SF | 292 |
| - | 1 | - | 1 | - | 1 | - | 2119641-1 | FEED CAM, AIR FEED | 248 |
| - | 1 | 1 | 1 | 1 | 1 | 1 | 2119082-4 | CAM, SNAIL, INSULATION ADJUSTMENT | 244 |
| - | 1 | 1 | 1 | 1 | 1 | 1 | 2079764-1 | WASHER, WAVE SPRING, CREST-TO-CREST | 243 |
| - | 1 | 1 | 1 | 1 | 1 | 1 | 2119083-1 | RETAINER, INSULATION DIAL | 242 |
| - | 1 | 1 | 1 | 1 | 1 | 1 | 7-18023-7 | SCR, SKT HD CAP M3 X 4.0 | 241 |
| - | - | 1 | - | 1 | - | 1 | 2119580-1 | MECHANICAL FEED ASSEMBLY | 239 |
| - | 1 | - | 1 | - | 1 | - | 2844940-1 | AIR FEED MODULE | 238 |
| - | REF | REF | REF | REF | REF | REF | 994970-2 | COUNTER, MAGNETIC | 164 |
| - | 1 | 1 | 1 | 1 | 1 | 1 | 2119955-1 | ASSY, LUBRICATOR, SIDE FEED | 113 |
| - | 1 | 1 | 1 | 1 | 1 | 1 | 2844908-1 | SCREW, LOCKING | 99 |
| - | 1 | 1 | 1 | 1 | 1 | 1 | 2844907-1 | POST, LOCKING | 98 |
| - | 1 | 1 | 1 | 1 | 1 | 1 | 455888-7 | SPACER, CRIMPER | 82 |
| - | 1 | 1 | 1 | 1 | 1 | 1 | 1803607-3 | DOCUMENTATION PACKAGE | 71 |
| - | 1 | 1 | 1 | 1 | 1 | 1 | 2119740-1 | TAG, IDENTIFICATION | 67 |
| - | 2 | 2 | 2 | 2 | 2 | 2 | 2168078-1 | SCREW, DRIVE, RH, RoHS, 2 x .188 | 66 |
| - | 1 | 1 | 1 | 1 | 1 | 1 | 2168083-2 | SCR, SKT HD CAP, RoHS, M4 X 8.0 | 60 |
| - | 1 | 1 | 1 | 1 | 1 | 1 | 5-18022-5 | SCR, HEX SKT CAP, M4 X 6.0 | 59 |
| - | 1 | 1 | 1 | 1 | 1 | 1 | 985575-3 | SCR, FLT SKT HD CAP M3 X 10.0 | 57 |
| - | 1 | 1 | 1 | 1 | 1 | 1 | 1338685-1 | PAWL, FEED | 56 |
| - | 4 | 4 | 4 | 4 | 4 | 4 | 2168083-3 | SCR, SKT HD CAP, RoHS, M4 X 12.0 | 54 |
| - | 2 | 2 | 2 | 2 | 2 | 2 | 2168083-3 | SCR, SKT HD CAP, RoHS, M4 X 12.0 | 53 |
| - | 1 | 2 | 1 | 2 | 1 | 2 | 18023-9 | SCR, SKT HD CAP M4 X 6.0 | 49 |
| - | - | 1 | - | 1 | - | 1 | 2119652-1 | FEED CAM, PRE FEED | 48 |
| - | - | 1 | - | 1 | - | 1 | 2119653-1 | FEED CAM, POST FEED | 47 |
| - | 1 | 1 | - | - | 1 | 1 | 1803583-9 | APPLICATOR BASIC ASSEMBLY, SF | 46 |
| - | 1 | 1 | 1 | 1 | 1 | 1 | 1803515-1 | RAM ASSEMBLY, SF ATLANTIC | 44 |
| - | 1 | 1 | 1 | 1 | 1 | 1 | 1803602-1 | SCR, BHSC, RoHS (M8 X 25) | 41 |
| - | 1 | 1 | 1 | 1 | 1 | 1 | 3-1752356-3 | SUPPORT, TERMINAL | 34 |
| - | 2 | 2 | 2 | 2 | 2 | 2 | 2079383-5 | SCR, BHSC, RoHS (M4 X 20) | 33 |
| - | 2 | 2 | 2 | 2 | 2 | 2 | 3-2844962-0 | SPACER, CYLINDRICAL, STRIP GUIDE | 30 |
| - | 1 | 1 | 1 | 1 | 1 | 1 | 2844992-2 | ASSEMBLY, STRIP GUIDE | 29 |
| - | 1 | 1 | 1 | 1 | 1 | 1 | 455888-3 | SPACER, CRIMPER | 28 |
| - | 1 | 1 | 1 | 1 | 1 | 1 | 1320928-2 | STRIP GUIDE | 24 |
| - | 1 | 1 | - | - | 1 | 1 | 2168083-2 | SCR, SKT HD CAP, RoHS, M4 X 8.0 | 21 |
| - | 2 | 2 | 1 | 2 | 2 | 2 | 1-18028-2 | WASHER, FLAT, REG M4 | 20 |
| - | 1 | 1 | - | - | 1 | 1 | 2119533-1 | STRIPPER, SIDE FEED | 19 |
| - | 1 | 1 | 1 | 1 | 1 | 1 | 2119806-1 | INSERT, SHEAR | 13 |
| - | 1 | 1 | 1 | 1 | 1 | 1 | 3-22280-3 | SPRING, COMPRESSION | 12 |
| - | 1 | 1 | 1 | 1 | 1 | 1 | 1-356885-5 | STOP, SHEAR | 11 |
| - | 1 | 1 | 1 | 1 | 1 | 1 | 2119805-1 | SHEAR HOLDER, FRONT | 10 |
| - | 1 | 1 | 1 | 1 | 1 | 1 | 318707-1 | FLOATING SHEAR, FRONT | 9 |
| 1 | 2 | 2 | 1 | 1 | 1 | 1 | 1-1333202-1 | ANVIL, COMBINATION | 8 |
| - | 1 | 1 | 1 | 1 | 1 | 1 | 2-2119781-4 | DEPRESSOR, SHEAR | 5 |
| - | 1 | 1 | 1 | 1 | 1 | 1 | 2-238011-1 | BLOCK, CRIMPER SPACER | 4 |
| 1 | 2 | 2 | 1 | 1 | 1 | 1 | 5-1633965-4 | CRIMPER, INSULATION O PREMIUM | 3 |
| - | 1 | 1 | 1 | 1 | 1 | 1 | 455888-9 | SPACER, CRIMPER | 2 |
| 1 | 2 | 2 | 1 | 1 | 1 | 1 | 1-456403-3 | CRIMPER, WIRE PREMIUM | 1 |

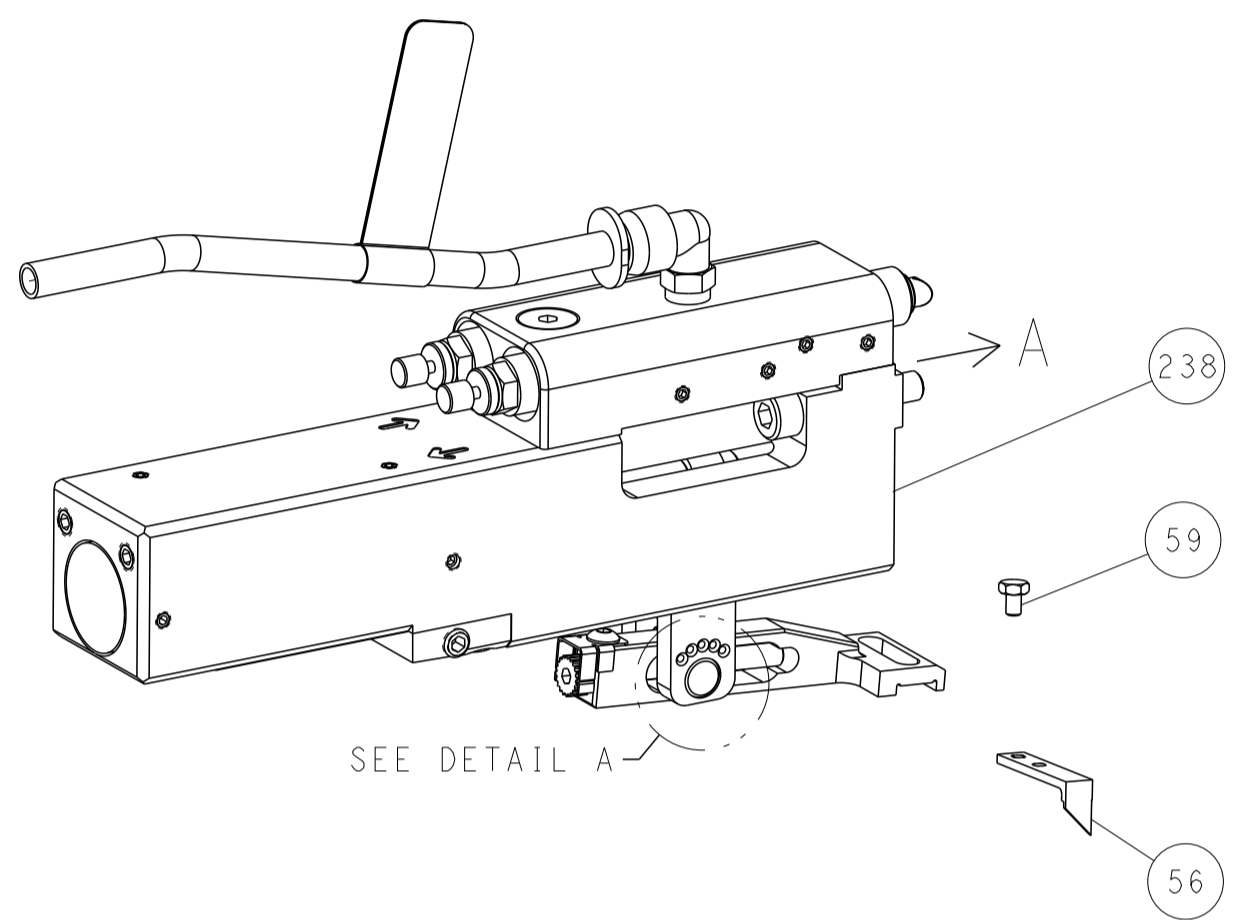
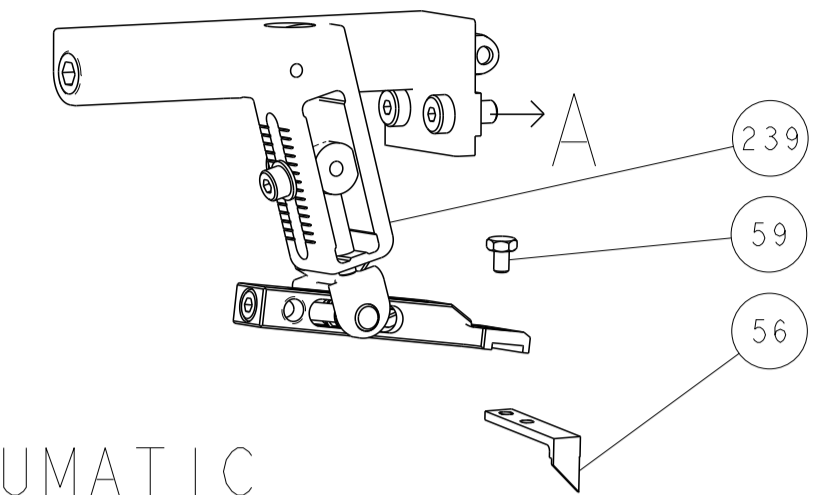
| ITEM NO | PART NO | DESCRIPTION | ITEM NO |
|---------|---------|-------------|---------|
| -77 | -72 | -71 | -52 |
| -51 | -2 | -1 | |

| | | |
|---|---|---|
| DIMENSIONS: mm TOLERANCES UNLESS OTHERWISE SPECIFIED: 0 PLC ± 1 PLC ± 2 PLC ± 3 PLC ± 4 PLC ± ANGLES ± FINISH | DWN: HOFFNER 03AUG2011 CHK: T.ELBIN 04AUG2011 APVD: T.ELBIN 04AUG2011 PRODUCT SPEC APPLICATION SPEC WEIGHT MATERIAL | NAME: OCEAN SIDE FEED APPLICATOR SIZE: A1 CAGE CODE: 00779 DRAWING NO: C=2151167 RESTRICTED TO: F |
|---|---|---|

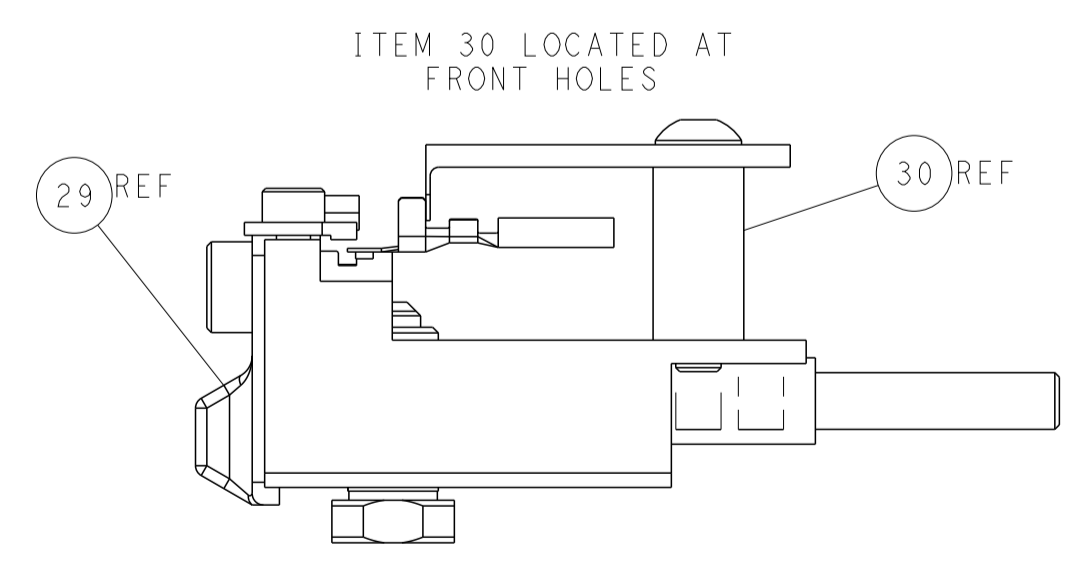
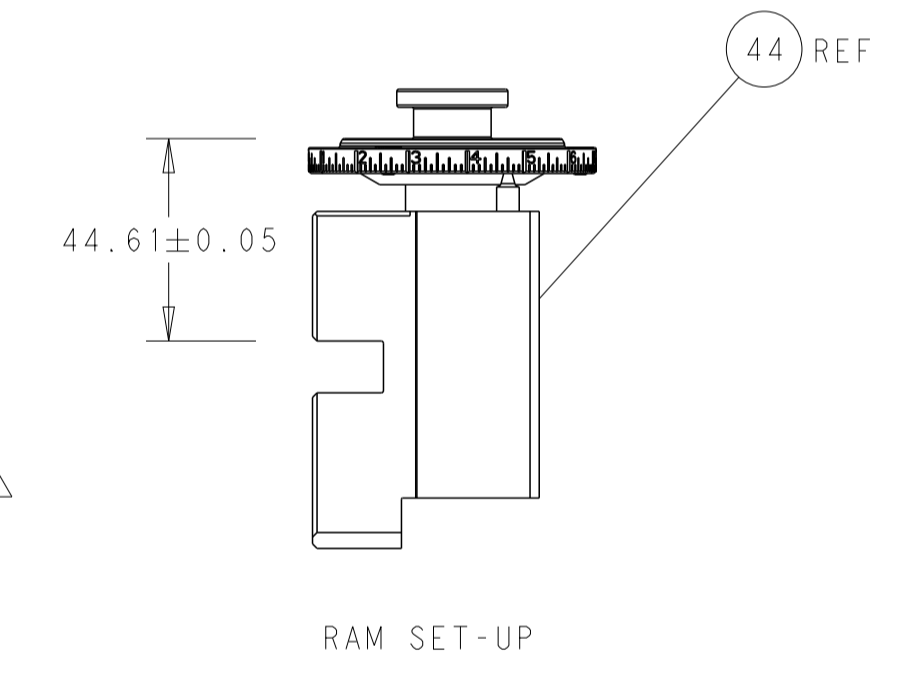
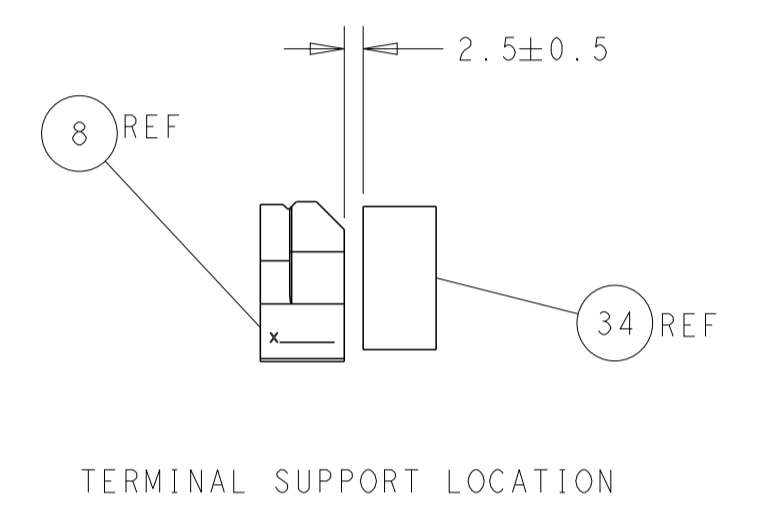
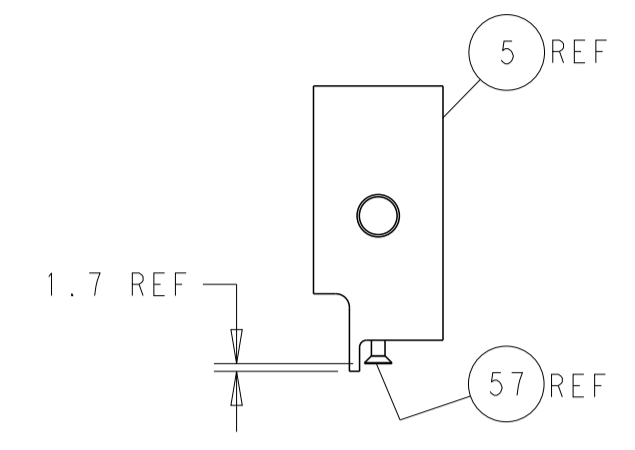
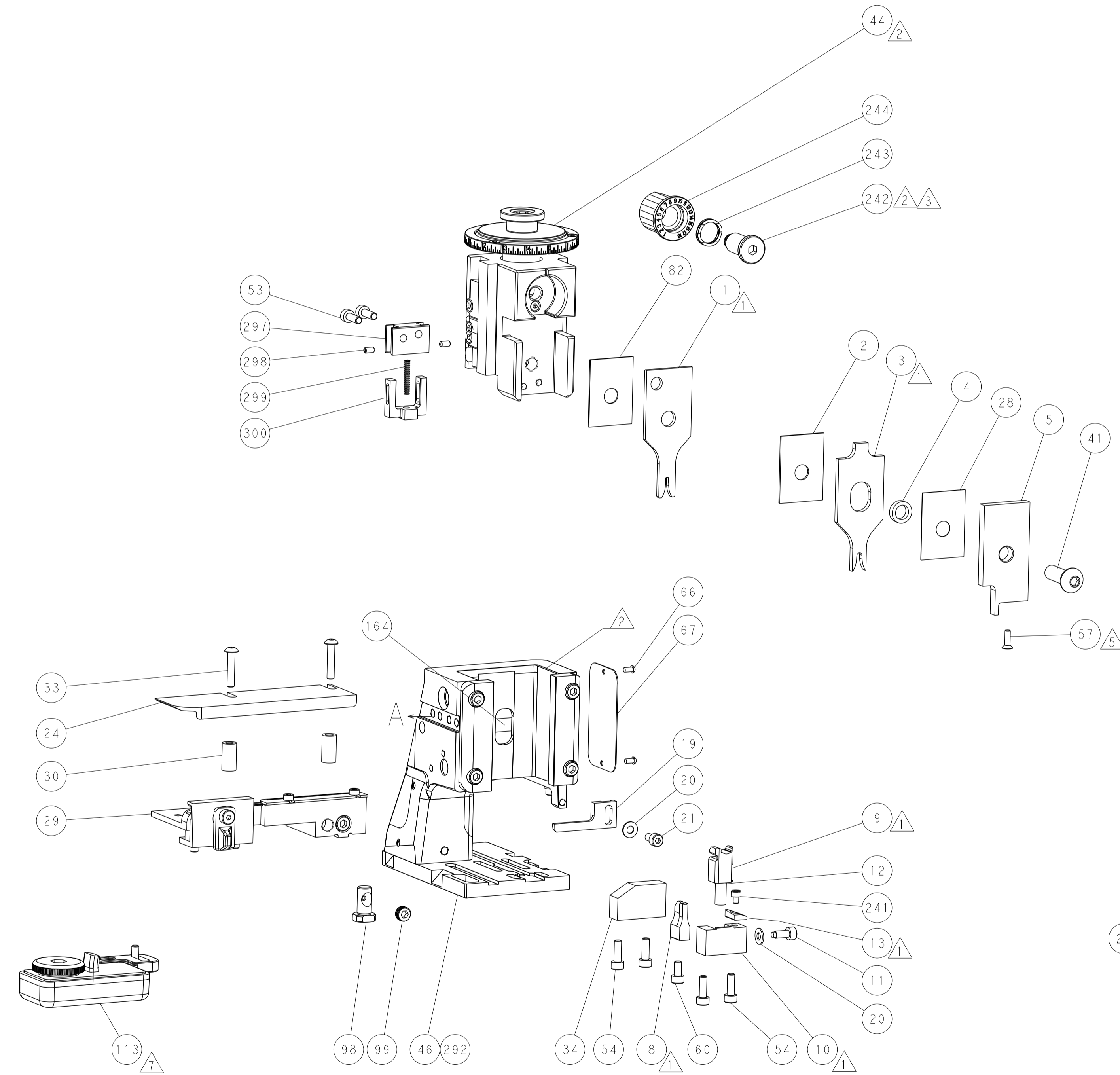
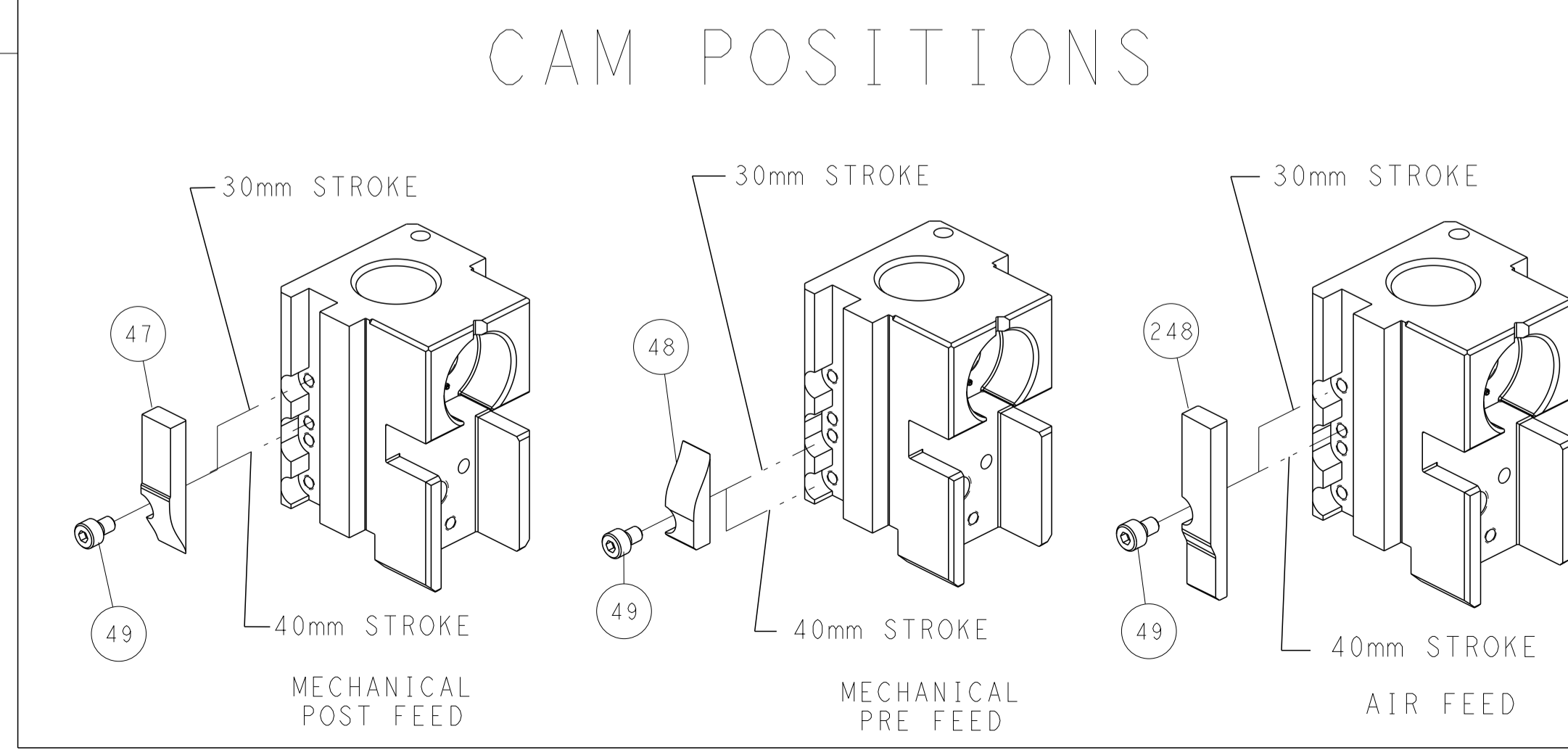
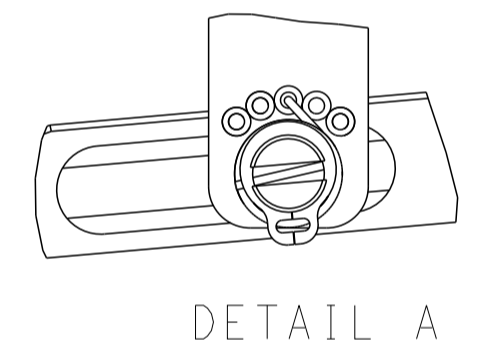
Customer Accessible Production Drawing SCALE 1:2 SHEET 1 OF 4 REV F

| LOC | DIST | REVISIONS | | | | | |
|-----|------|-----------|-----|-------------|------|-----|------|
| A | 66 | P | LTN | DESCRIPTION | DATE | OWN | APVD |
| | | - | | SEE SHEET 1 | - | - | - |

FEED TYPE MECHANICAL



FEED SPRING SETTING POSITION (SHOWN FROM REAR SIDE)

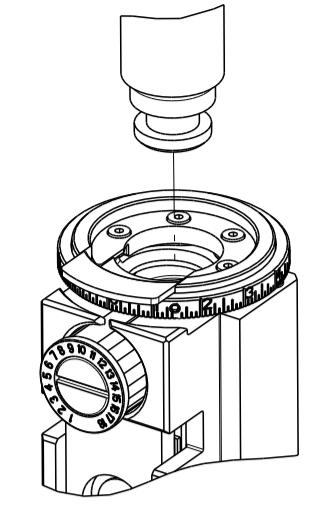


ATLANTIC VERSION
 Shown on sheets 1 of 4 & 2 of 4
 (Pacific version shown on sheets 3 of 4 & 4 of 4)

| | | | | |
|---|---|---|---|--|
| <small>THIS DRAWING IS UNPUBLISHED. RELEASED FOR PUBLICATION BY TYCO ELECTRONICS CORPORATION. ALL RIGHTS RESERVED.</small> | | DWN: HOFFNER 03AUG2011 CHK: T. ELBIN 04AUG2011 APVD: T. ELBIN 04AUG2011 | NAME: OCEAN SIDE FEED APPLICATOR SIZE: A1 CAGE CODE: 00779 DRAWING NO: 2151167 | TE Connectivity Harrisburg, PA 17105-3608 |
| DIMENSIONS: mm TOLERANCES UNLESS OTHERWISE SPECIFIED: 0 PLC ± 1 PLC ± 2 PLC ± 3 PLC ± 4 PLC ± ANGLES ± FINISH | TOLERANCES UNLESS OTHERWISE SPECIFIED: 0 PLC ± 1 PLC ± 2 PLC ± 3 PLC ± 4 PLC ± ANGLES ± FINISH | PRODUCT SPEC APPLICATION SPEC WEIGHT SCALE: 1:2 | SHEET 2 OF 4 REV F | RESTRICTED TO |

| PART NUMBER | REVISION | DESCRIPTION | FEED TYPE |
|-------------|----------|--------------------------|------------|
| 2-2151167-1 | F | FINE CRIMP HEIGHT ADJUST | MECHANICAL |
| 2-2151167-2 | F | FINE CRIMP HEIGHT ADJUST | PNEUMATIC |
| 7-2151167-7 | A | CRIMP TOOLING KIT | - |

PACIFIC VERSION TERMINATOR
INTERFACE ADAPTER



| APPLICATOR DATA | | |
|--------------------------------------|----------------|------|
| CRIMP | SIZE | TYPE |
| WIRE | 1.57 mm [.062] | F |
| INSUL | 3.30 mm [.130] | O |
| APPLICATOR INSTRUCTIONS 408-35042 | | |

| TERMINAL DATA: TE TERMINAL | | TE CRIMP SPECIFICATION | |
|--------------------------------------|------------------------------|------------------------|---|
| TERMINAL NAME: MICRO TIMER 2 CONTACT | | | |
| WIRE STRIP LENGTH | INSULATION DIAMETER RANGE | | |
| 3.20-3.80 mm [1.26-.150 IN] | Ø1.20-1.60 mm [.047-.063 IN] | | |
| TERMINAL APPLICATION SPECIFICATION | (A)114-18081 | - | - |
| | (B)114-18082 | - | - |

| TERMINALS APPLIED | | | | SEAL INSULATION DIAMETER RANGE |
|-------------------|--------------|---------|--------------|--------------------------------|
| TE TERMINAL | TE TERMINAL | TE SEAL | TE SEAL | |
| (A) 968045-1 | (A) 968045-2 | | (B) 963530-1 | Ø1.4-1.9mm |
| (A) 968045-6 | (A) 968045-7 | | (A) 964971-1 | Ø1.2-1.6mm |
| (B) 963902-1 | (B) 962964-1 | | | |
| (B) 963902-2 | (B) 962964-2 | | | |
| (B) 963902-3 | (B) | | | |

| TERMINAL DATA: TE TERMINAL | | TE CRIMP SPECIFICATION | |
|--------------------------------------|------------------------------|------------------------|---|
| TERMINAL NAME: MICRO TIMER 2 CONTACT | | | |
| WIRE STRIP LENGTH | INSULATION DIAMETER RANGE | | |
| 3.20-3.80 mm [1.26-.150 IN] | Ø1.20-1.60 mm [.047-.063 IN] | | |
| TERMINAL APPLICATION SPECIFICATION | (A)114-18081 | - | - |
| | - | - | - |

| TERMINALS APPLIED | | | | SEAL INSULATION DIAMETER RANGE |
|-------------------|--------------|---------|--------------|--------------------------------|
| TE TERMINAL | TE TERMINAL | TE SEAL | TE SEAL | |
| (A) 962875-1 | (A) 962875-2 | | (B) 963530-1 | Ø1.4-1.9mm |
| (A) 962875-3 | (A) 962875-5 | | (A) 964971-1 | Ø1.2-1.6mm |

| WIRE SIZE | CRIMP HEIGHT mm [INCH] | CRIMP HEIGHT REFERENCE SETTING |
|-----------|----------------------------|--------------------------------|
| 0.50mm2 | 1.12+/-0.03 [.044+/- .001] | 5.8 |
| 0.35mm2 | 1.05+/-0.03 [.041+/- .001] | 6.7 |
| 0.25mm2 | 1.00+/-0.03 [.039+/- .001] | 7.1 |
| 0.20mm2 | 0.98+/-0.03 [.039+/- .001] | 7.3 |

| WIRE SIZE | CRIMP HEIGHT mm [INCH] | CRIMP HEIGHT REFERENCE SETTING |
|-----------|----------------------------|--------------------------------|
| 0.50mm2 | 1.12+/-0.05 [.044+/- .002] | 5.8 |
| 0.35mm2 | 1.05+/-0.03 [.041+/- .001] | 6.7 |

- 1 RECOMMENDED SPARE PARTS
- 2 REFER TO SUPPLIED INSTRUCTION SHEET FOR CLEANING, LUBRICATION AND STORAGE OF APPLICATOR.
- 3 APPLY PART NUMBER 2-23419-6 LOCTITE TO THREADS OF ITEM 242.
- 4 CRIMP HEIGHT REFERENCE SETTING WAS THE SETTING USED WHEN THE APPLICATOR WAS QUALIFIED AT THE FACTORY. ADJUSTMENT MAY BE NECESSARY WHEN RUNNING APPLICATOR IN THE FIELD.
- 5 APPLY TORQ-SEAL IN ALLEN SOCKET TO FILL HOLE AFTER FLAT HD HAS BEEN ADJUSTED TO CORRECT HEIGHT AT QUALIFICATION. APPLY #1-23419-5 LOC-TITE TO THREADS.
- 6 UNLESS SPECIFIED OTHERWISE TORQUE VALUES SHALL BE USED PER DOCUMENT, 101-35000.
- 7 TERMINAL LUBRICANT IS RECOMMENDED.

***WARNING**
ON INSTALLATION, SET WIRE DISC TO CRIMP HEIGHT REFERENCE SETTING FOR LARGEST WIRE SIZE. CRIMP HEIGHT REFERENCE SETTINGS GREATER THAN THE VALUE SHOWN MAY CAUSE DAMAGE TO THE CRIMP TOOLING, REFER TO THE INSTRUCTION SHEET FOR PROPER SETUP AND ADJUSTMENTS.

| ENTRY LEVEL APPLICATOR | | ITEM SUBSTITUTION LIST | | |
|------------------------|-------------|------------------------|---------------------|------------------------|
| PART NUMBER | SAME AS | ITEM | ITEM DESCRIPTION | SUBSTITUTE PART NUMBER |
| 8-2151167-1 | 2151167-1 | 1 | WIRE CRIMPER | 1-1803547-3 |
| 8-2151167-2 | 2151167-2 | 3 | INSULATION CRIMPER | 5-1803624-4 |
| 9-2151167-1 | 2-2151167-1 | 46 | BASIC SUB -ASSEMBLY | 1803940-9 |
| 9-2151167-2 | 2-2151167-2 | 141 | BASIC SUB -ASSEMBLY | 1-1803940-0 |
| | | | LUBRICATOR | DELETE |

PACIFIC VERSION
Shown on sheets 3 of 4 & 4 of 4
(Atlantic version shown on sheets 1 of 4 & 2 of 4)

| LOC | DIST | REVISIONS | | | | | |
|-----|------|-----------|-----|-------------|------|-----|------|
| A | 66 | P | LTN | DESCRIPTION | DATE | OWN | APVD |
| | | - | | SEE SHEET 1 | | | |

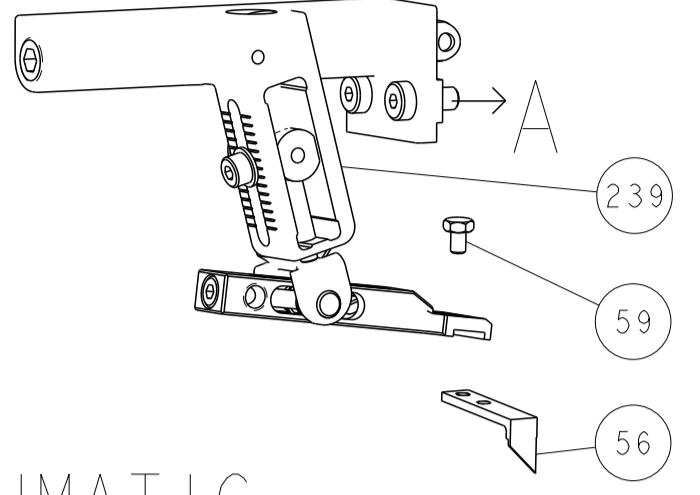
| | | | | | |
|---|-----|-----|-------------|-------------------------------------|-----|
| - | 1 | 1 | 1803945-4 | TONKER | 300 |
| - | 1 | 1 | 22278-9 | SPRING, COMPRESSION | 299 |
| - | 2 | 2 | 4-18032-3 | SCR, SET, FLT PNT, M3 X 6.0 | 298 |
| - | 1 | 1 | 1803944-1 | SPACER, TONKER | 297 |
| - | 1 | 1 | 2-1803583-1 | APPLICATOR BASIC ASSEMBLY, SF | 292 |
| - | 1 | 1 | 2119082-4 | CAM, SNAIL, INSULATION ADJUSTMENT | 244 |
| - | 1 | 1 | 2079764-1 | WASHER, WAVE SPRING, CREST-TO-CREST | 243 |
| - | 1 | 1 | 2119083-1 | RETAINER, INSULATION DIAL | 242 |
| - | 1 | 1 | 7-18023-7 | SCR, SKT HD CAP M3 X 4.0 | 241 |
| - | - | 1 | 2119580-1 | MECHANICAL FEED ASSEMBLY | 239 |
| - | 1 | - | 2844940-1 | AIR FEED MODULE | 238 |
| - | REF | REF | 994970-2 | COUNTER, MAGNETIC | 164 |
| - | 1 | - | 2119641-2 | FEED CAM, AIR FEED | 151 |
| - | 1 | 1 | 2168083-8 | SCR, SKT HD CAP, RoHS, M4 X 16 | 144 |
| - | 4 | 4 | 2168083-9 | SCR, SKT HD CAP, RoHS, M4 X 20 | 143 |
| - | - | 1 | 2119653-2 | FEED CAM, POST FEED | 142 |
| - | 1 | 1 | 1-1803583-0 | APPLICATOR BASIC ASSEMBLY, SF | 141 |
| - | 1 | 1 | 1803516-1 | RAM ASSEMBLY, SF PACIFIC | 140 |
| - | 1 | 1 | 2119955-1 | ASSY, LUBRICATOR, SIDE FEED | 113 |
| - | 1 | 1 | 2844908-1 | SCREW, LOCKING | 99 |
| - | 1 | 1 | 2844907-1 | POST, LOCKING | 98 |
| - | 1 | 1 | 455888-7 | SPACER, CRIMPER | 82 |
| - | 1 | 1 | 1803607-3 | DOCUMENTATION PACKAGE | 71 |
| - | 1 | 1 | 2119740-1 | TAG, IDENTIFICATION | 67 |
| - | 2 | 2 | 2168078-1 | SCREW, DRIVE, RH, RoHS, 2 x .188 | 66 |
| - | 1 | 1 | 5-18022-5 | SCR, HEX HD CAP, M4 X 6.0 | 59 |
| - | 1 | 1 | 985575-3 | SCR, FLT SKT HD CAP M3 X 10.0 | 57 |
| - | 1 | 1 | 1338685-1 | PAWL, FEED | 56 |
| - | 2 | 2 | 2168083-3 | SCR, SKT HD CAP, RoHS, M4 X 12.0 | 53 |
| - | 1 | 2 | 18023-9 | SCR, SKT HD CAP M4 X 6.0 | 49 |
| - | - | 1 | 2119652-1 | FEED CAM, PRE FEED | 48 |
| - | 1 | 1 | 1803602-1 | SCR, BHSC, RoHS (M8 X 25) | 41 |
| - | 1 | 1 | 3-1752356-3 | SUPPORT, TERMINAL | 34 |
| - | 2 | 2 | 2079383-5 | SCR, BHSC, RoHS (M4 X 20) | 33 |
| - | 2 | 2 | 3-2844962-0 | SPACER, CYLINDRICAL, STRIP GUIDE | 30 |
| - | 1 | 1 | 2844992-2 | ASSEMBLY, STRIP GUIDE | 29 |
| - | 1 | 1 | 455888-3 | SPACER, CRIMPER | 28 |
| - | 1 | 1 | 1320928-2 | STRIP GUIDE | 24 |
| - | 1 | 1 | 2168083-2 | SCR, SKT HD CAP, RoHS, M4 X 8.0 | 21 |
| - | 2 | 2 | 1-18028-2 | WASHER, FLAT, REG M4 | 20 |
| - | 1 | 1 | 2119533-1 | STRIPPER, SIDE FEED | 19 |
| - | 1 | 1 | 2119806-1 | INSERT, SHEAR | 13 |
| - | 1 | 1 | 3-22280-3 | SPRING, COMPRESSION | 12 |
| - | 1 | 1 | 1-356885-5 | STOP, SHEAR | 11 |
| - | 1 | 1 | 2119805-1 | SHEAR HOLDER, FRONT | 10 |
| - | 1 | 1 | 318707-1 | FLOATING SHEAR, FRONT | 9 |
| - | 1 | 1 | 1-1333202-1 | ANVIL, COMBINATION | 8 |
| - | 1 | 1 | 2-2119781-4 | DEPRESSOR, SHEAR | 5 |
| - | 1 | 1 | 2-238011-1 | BLOCK, CRIMPER SPACER | 4 |
| - | 1 | 1 | 5-1633965-4 | CRIMPER, INSULATION O PREMIUM | 3 |
| - | 1 | 1 | 455888-9 | SPACER, CRIMPER | 2 |
| - | 1 | 1 | 1-456403-3 | CRIMPER, WIRE PREMIUM | 1 |

| DIMENSIONS: | | TOLERANCES UNLESS OTHERWISE SPECIFIED: | | MATERIAL: | |
|-------------|---------|--|---------|-----------|---------|
| mm | 0 PLC ± | 1 PLC ± | 2 PLC ± | 3 PLC ± | 4 PLC ± |
| | ANGLES | FINISH | | | |

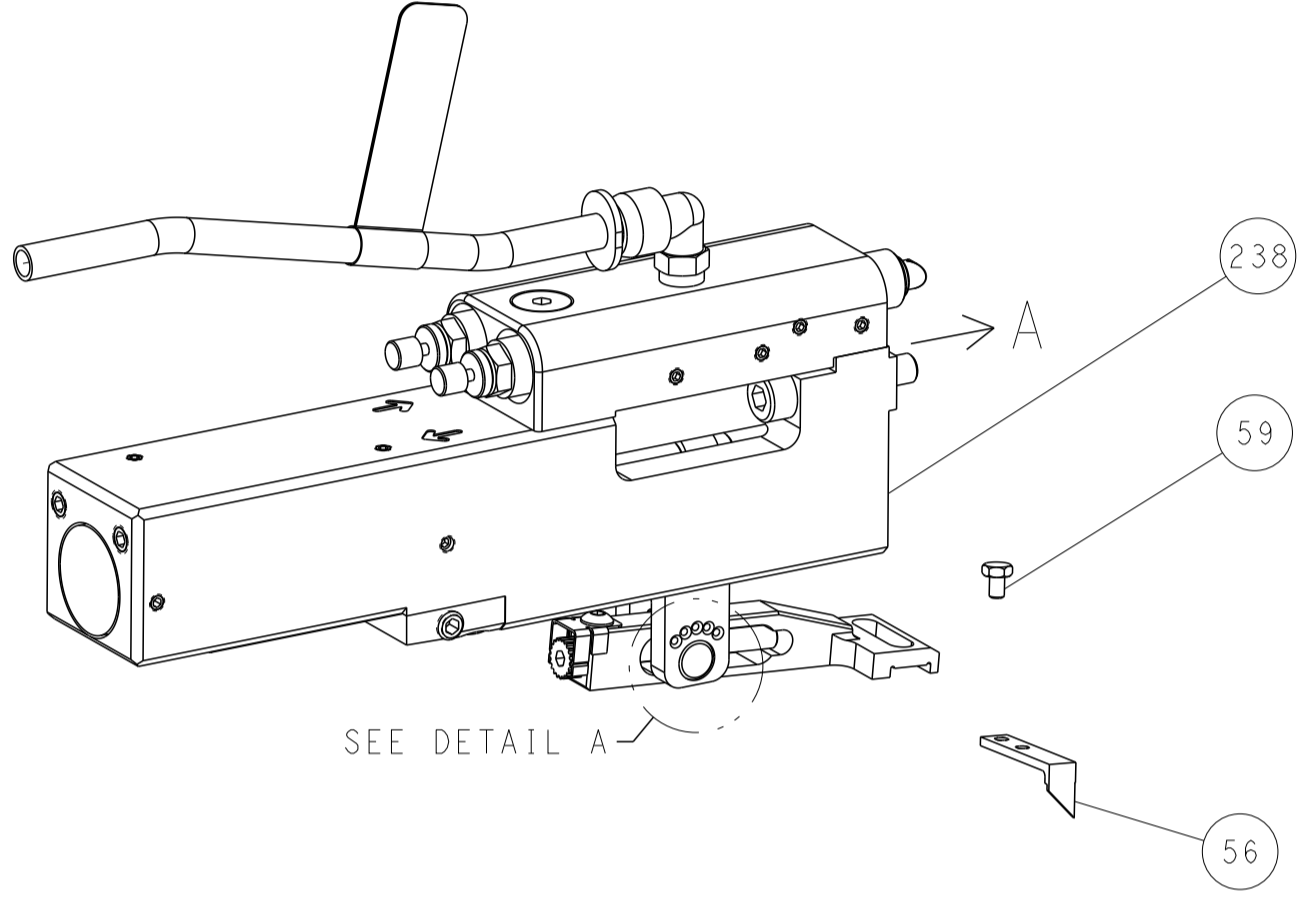
| OWN | CHK | APVD | DATE | NAME | SIZE | CAGE CODE | DRAWING NO | RESTRICTED TO |
|---------|-----------|----------|-----------|----------------------------|------|-----------|------------|---------------|
| HOFFNER | 03AUG2011 | T. ELBIN | 04AUG2011 | OCEAN SIDE FEED APPLICATOR | A1 | 00779 | 2151167 | REV F |

| LOC | DIST | REVISIONS | | | | | |
|-----|------|-----------|-----|-------------|------|-----|------|
| A | 66 | P | LTN | DESCRIPTION | DATE | OWN | APVD |
| | | - | | SEE SHEET 1 | - | - | - |

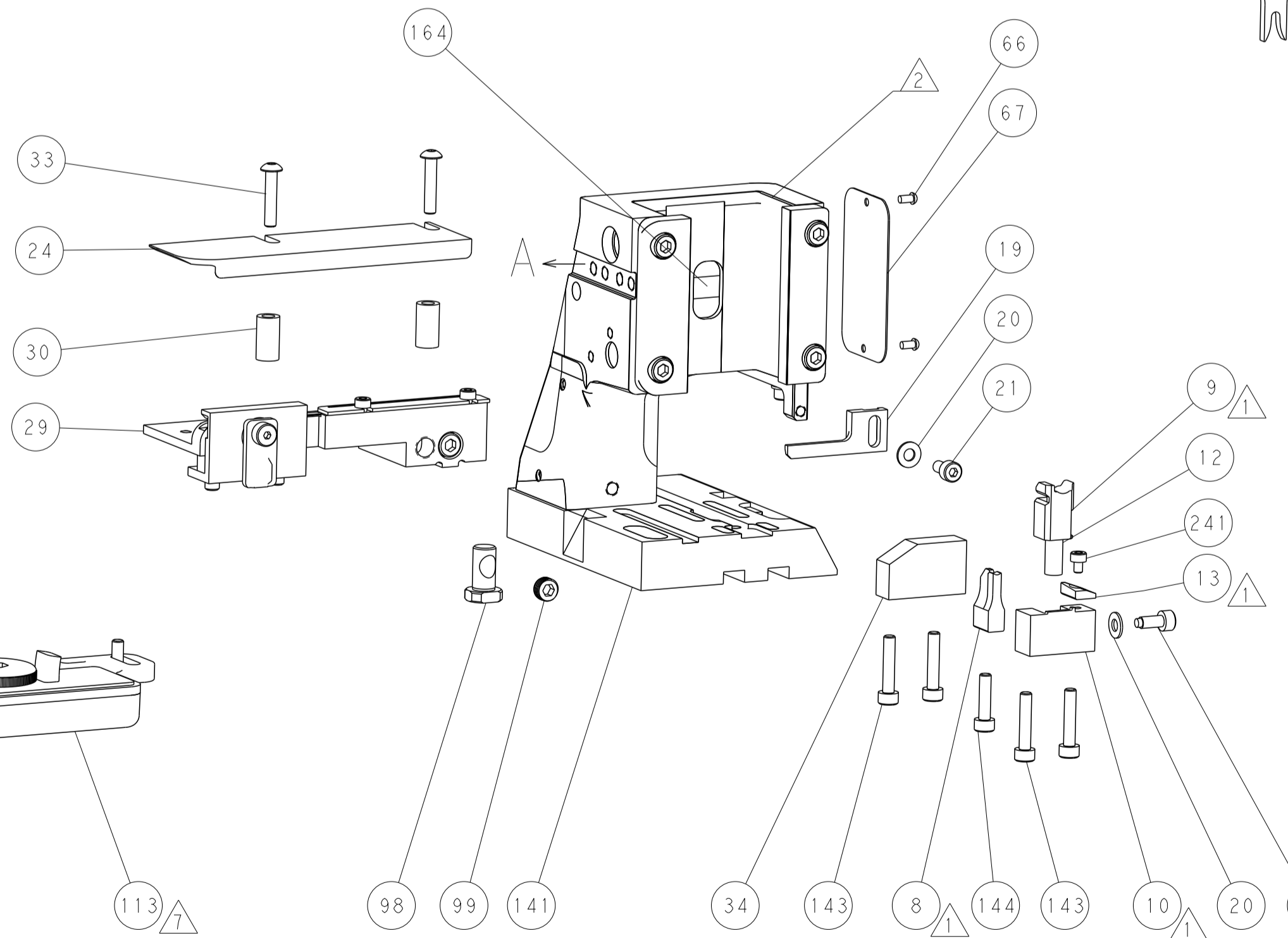
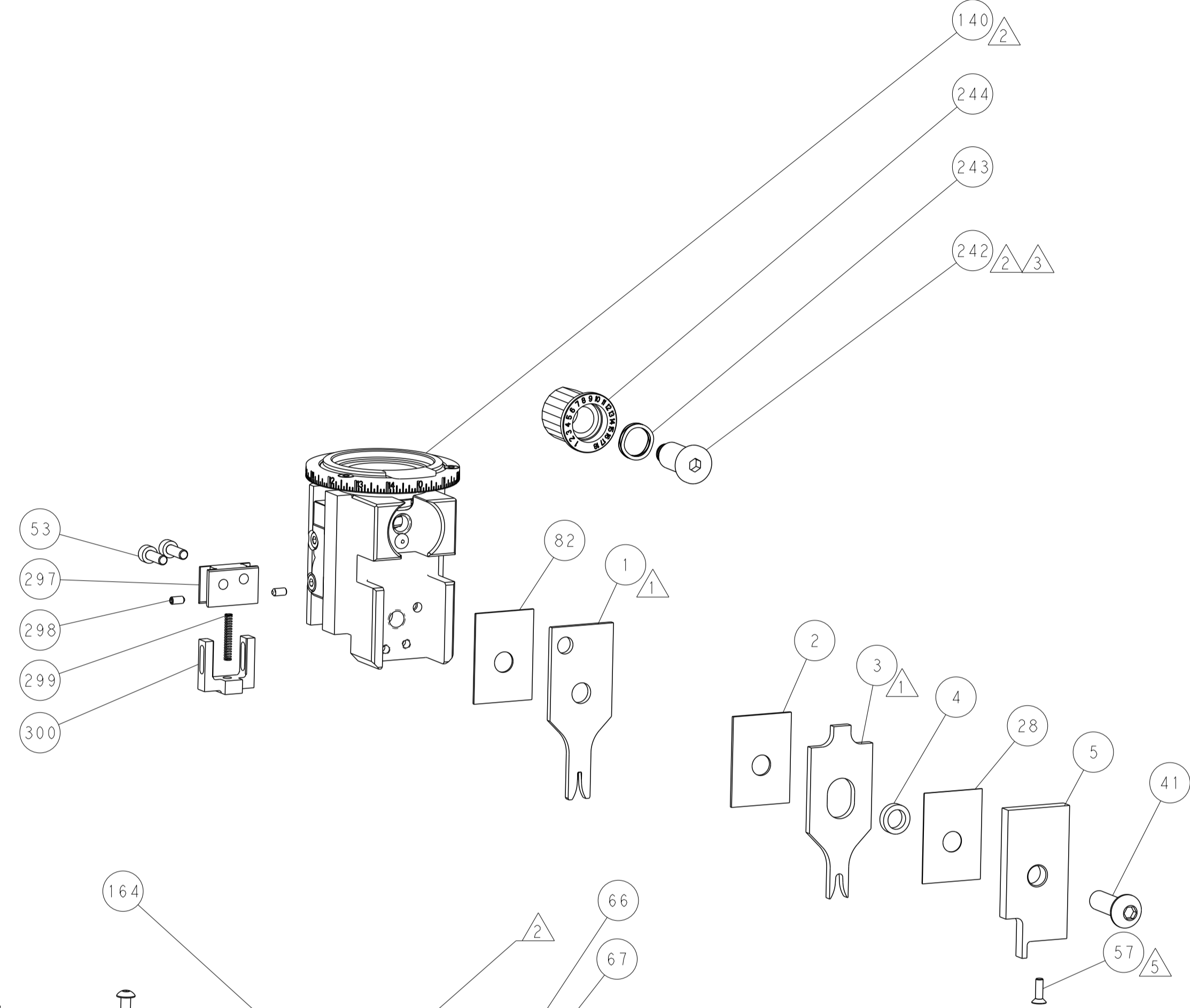
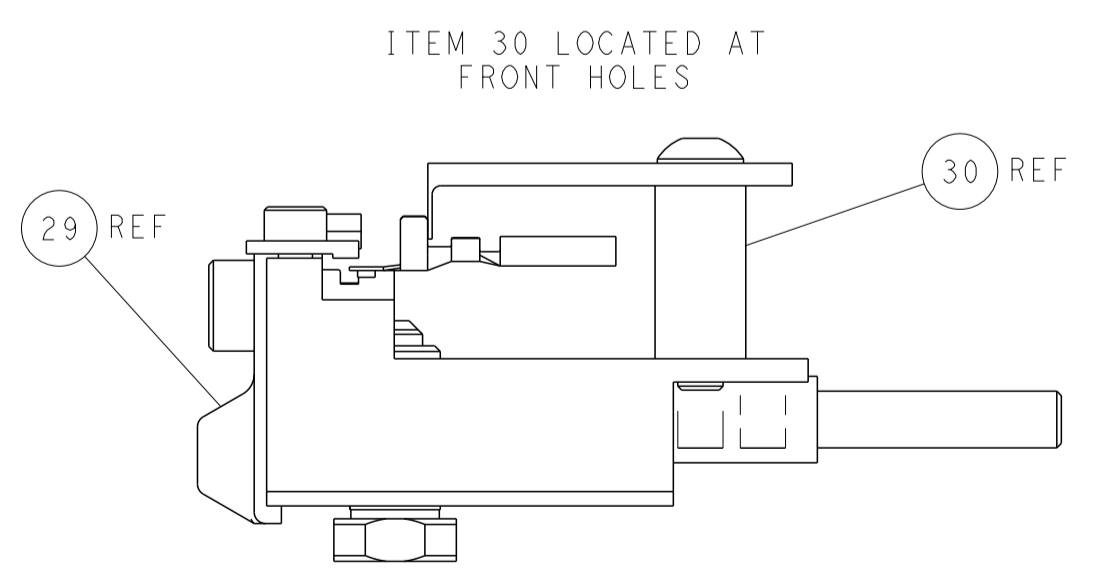
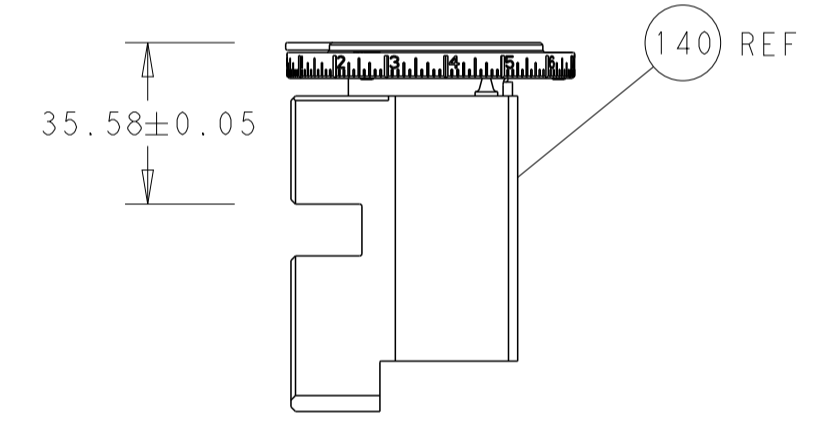
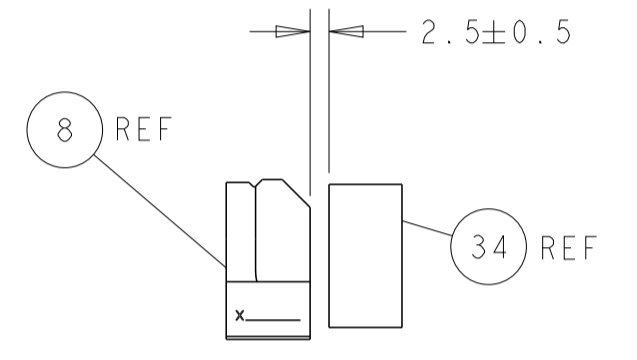
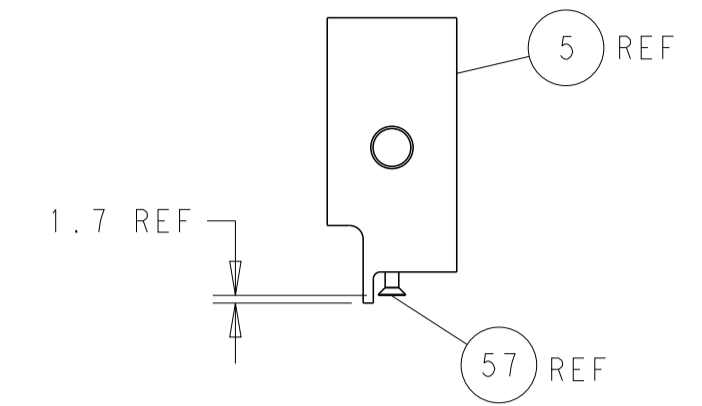
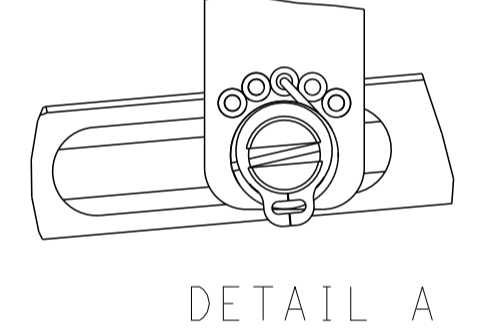
FEED TYPE MECHANICAL



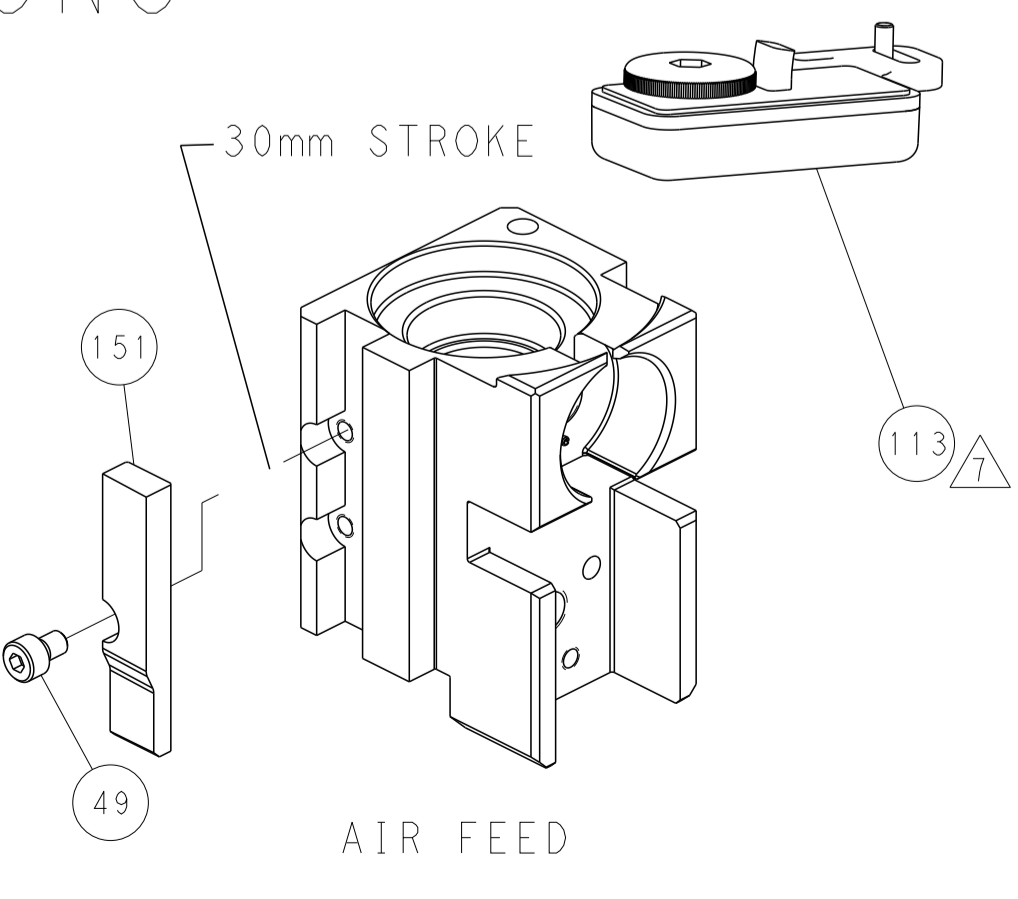
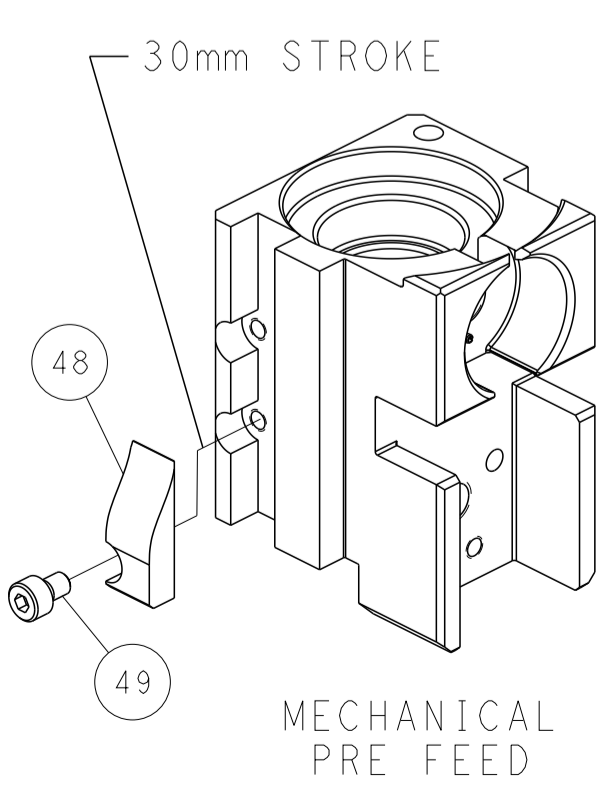
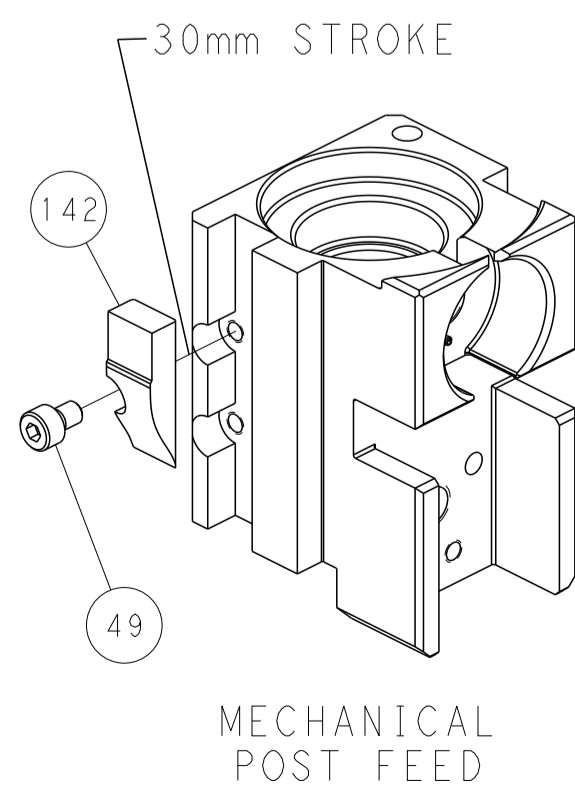
PNEUMATIC



FEED SPRING SETTING POSITION (SHOWN FROM REAR SIDE)



CAM POSITIONS



PACIFIC VERSION
 Shown on sheets 3 of 4 & 4 of 4
 (Atlantic version shown on sheets 1 of 4 & 2 of 4)

| | | | |
|---|--|---|---|
| <small>THIS DRAWING IS UNPUBLISHED. RELEASED FOR PUBLICATION. ALL RIGHTS RESERVED. © 2000 BY TYCO ELECTRONICS CORPORATION. THIS IS THE PROPERTY OF COMPANY AND IS NOT TO BE REPRODUCED OR TRANSMITTED IN ANY FORM OR BY ANY MEANS, ELECTRONIC OR MECHANICAL, WITHOUT PERMISSION IN WRITING FROM TYCO ELECTRONICS CORPORATION.</small> | | DWN: HOFFNER 03AUG2011 CHK: T. ELBIN 04AUG2011 APVD: T. ELBIN 04AUG2011 | TE Connectivity Harrisburg, PA 17105-3608 |
| DIMENSIONS: mm TOLERANCES UNLESS OTHERWISE SPECIFIED: 0 PLC ± 1 PLC ± 2 PLC ± 3 PLC ± 4 PLC ± ANGLES ± FINISH ± | | NAME: OCEAN SIDE FEED APPLICATOR APPLICATION SPEC: - PRODUCT SPEC: - SIZE: A1 CAGE CODE: 00779 DRAWING NO: C=2151167 | RESTRICTED TO: - SCALE: 1:2 SHEET: 4 OF 4 REV: F |
| MATERIAL: - WEIGHT: - | | Customer Accessible Production Drawing | |