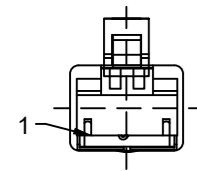
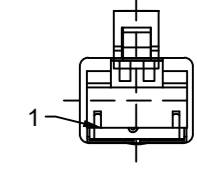


FRONT VIEW - MALE RJ45



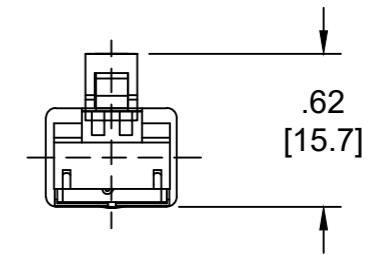
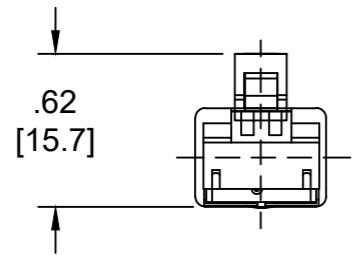
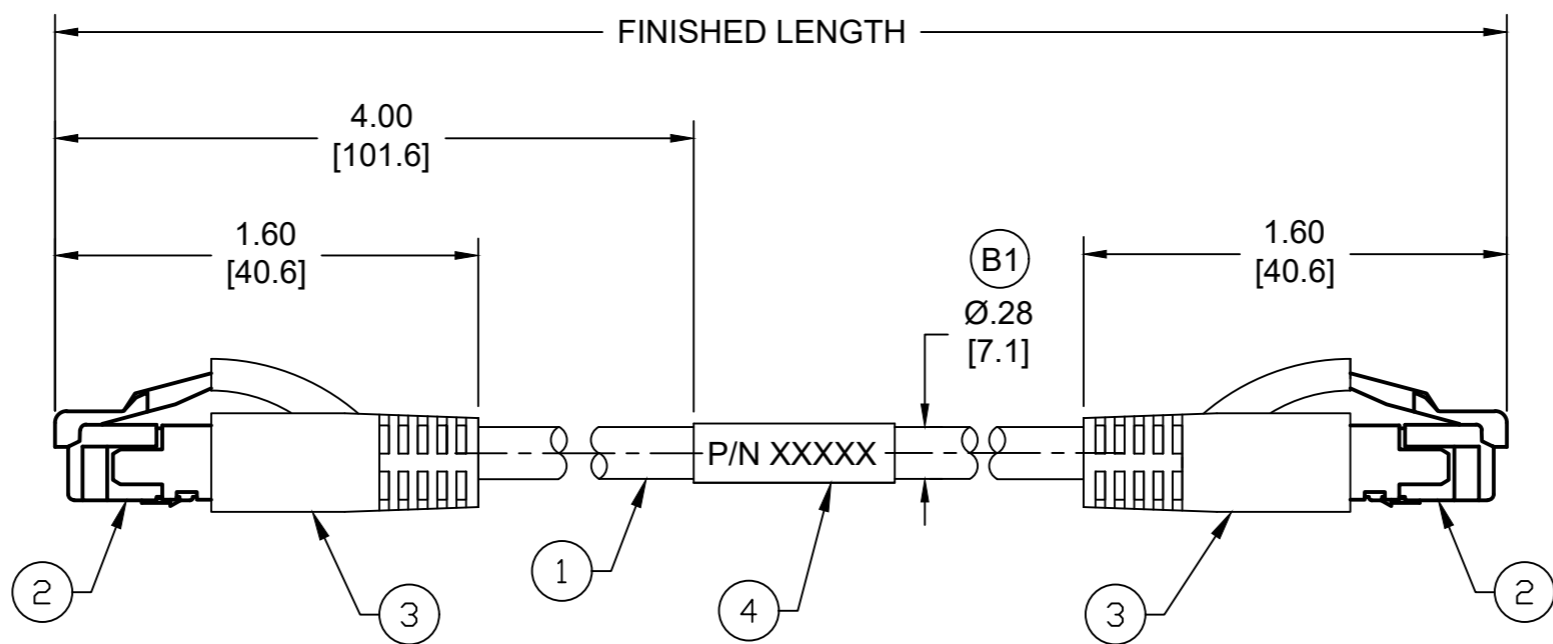
- 1-WHITE/ORANGE
- 2-ORANGE
- 3-WHITE/GREEN
- 6-GREEN

FRONT VIEW - MALE RJ45



- 1-WHITE/ORANGE
- 2-ORANGE
- 3-WHITE/GREEN
- 4-GREEN

| MATERIAL NUMBER | ENGINEERING NUMBER | FINISHED LENGTH |
|-----------------|--------------------|-----------------|
| 1201088186      | E66A06006M005      | 0.5M [1FT 8 IN] |
| 1201088179      | E66A06006M400      | 40M[131FT 3 IN] |
| 1201080448      | E66A06006M800      | 80M[262FT 6 IN] |



- NOTES:
1. MATERIAL: AS NOTED
  2. FINISH: AS NOTED
  3. ELECTRICAL:  
VOLTAGE: 30V AC/DC  
CURRENT: 1.5A
  4. TEMP RATING: -20°TO +75°C (B1)
  5. UL LISTED FILE: E361772 (B1)
  6. ALL DIMENSIONS ARE FOR REFERENCE UNLESS TOLERANCED OR NOTED OTHERWISE

PART NUMBER LEGEND  
E66A06006M005

- FINISHED LENGTH  
M005 - 0.5 METER  
M010 - 1 METER  
M200 - 20 METER

(B1) CABLE LENGTH TOLERANCES

|                          |                         |
|--------------------------|-------------------------|
| <.3M [1FT]:              | +19mm-0 [+ .75in-0]     |
| .3 - .9M [1 - 3FT]:      | +44.5mm-0 [+1.75in-0]   |
| .9 - 1.8M [3 - 6FT]:     | +55.6mm-0 [+2.19in-0]   |
| 1.8 - 3.7M [6 - 12FT]:   | +88.9mm-0 [+3.50in-0]   |
| 3.7 - 7.3M [12 - 24FT]:  | +165.1mm-0 [+6.50in-0]  |
| 7.3-14.6M [24 - 48FT]:   | +317.5mm-0 [+12.50in-0] |
| 14.6 - 30.5M [48-100FT]: | +622.3mm-0 [+24.50in-0] |
| OVER 30M [100FT]:        | +2% OF FINISHED LENGTH  |

| ITEM | DESCRIPTION             | MATERIAL      | FINISH      |
|------|-------------------------|---------------|-------------|
| 4    | WRAP LABEL              | VINYL         | BLACK/WHITE |
| 3    | RJ45 BOOT, HOODED       | PVC           | BLACK       |
| 2    | RJ45 PLUG               | POLYCARBONATE | TRANSPARENT |
| 1    | CABLE, ETHERNET, 24 AWG | TPE JACKET    | BLUE        |

|   |   |  |                                      |              |
|---|---|--|--------------------------------------|--------------|
| FUNCTIONAL SYMBOLS<br>F=0<br>E=0<br>P=0 | THIS DRAWING CONTAINS INFORMATION THAT IS PROPRIETARY TO MOLEX ELECTRONIC TECHNOLOGIES, LLC AND SHOULD NOT BE USED WITHOUT WRITTEN PERMISSION |  |                                      |              |
|   | DIMENSION UNITS   | SCALE  |                                      |              |
|   | INCH/MM   | NTS  | EC NO: 703079                        |              |
|   | GENERAL TOLERANCES (UNLESS SPECIFIED)   |  | DRWN: ABENJAMINLW 2021/10/29         | ETHERNET     |
| 4 PLACES ±----                          |   | CHK'D: RSTONE 2022/04/12                             | MALE RJ45/RJ45 #24-2P BLUE TPE CAT5E |              |
| 3 PLACES ±----                          |   | APPR: BWOODMAN 2022/04/18                            | PRODUCT CUSTOMER DRAWING             |              |
| 2 PLACES ±----                          |   | INITIAL REVISION:                                    | DOCUMENT NUMBER                      |              |
| 1 PLACE ±----                           |   | DRWN: BARDEN 2013/02/15                              | SD-120108-054                        |              |
| 0 PLACES ±----                          |   | APPR: JFMURPHY 2013/04/18                            | PSD 001 B1                           |              |
| ANGULAR TOL ± ---- °                    |   | DRAFT WHERE APPLICABLE MUST REMAIN WITHIN DIMENSIONS | THIRD ANGLE PROJECTION               | SHEET NUMBER |
|   |   |  | DRAWING B-SIZE                       | 1 OF 1       |
|   |   |  | SERIES 120108                        |              |
|   |   |  | MATERIAL NUMBER SEE CHART            |              |
|   |   |  | CUSTOMER GENERAL MARKET              |              |