

Customer Information Sheet

DRAWING No.: M22-30600XX

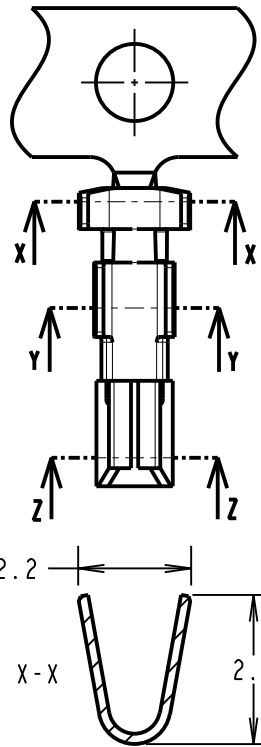
IF IN DOUBT - ASK

Ⓒ

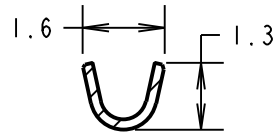
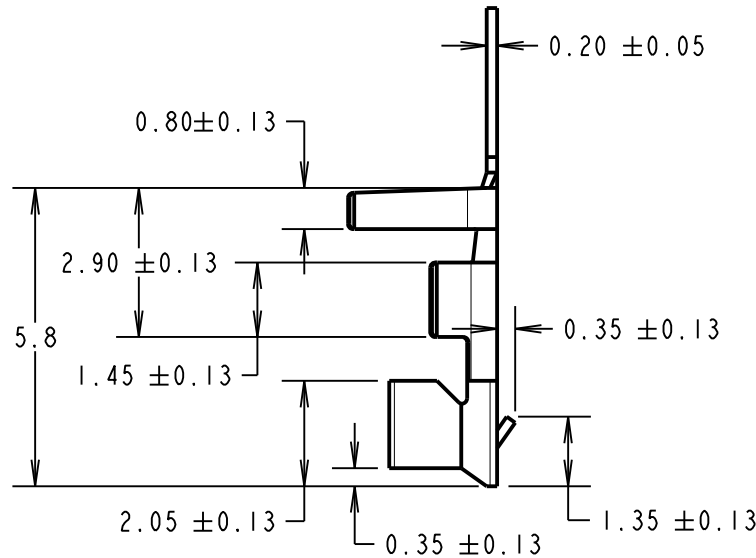
NOT TO SCALE

THIRD ANGLE PROJECTION

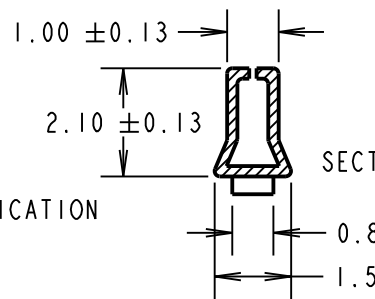
ALL DIMENSIONS IN mm



SECTION X-X



SECTION Y-Y



SECTION Z-Z

SPECIFICATIONS:

MATERIAL = PHOSPHOR BRONZE

FINISH:

~~05 = 0.1 μ GOLD~~

46 = 2.5 μ 100% TIN OVER NICKEL

ELECTRICAL:

VOLTAGE RATING = 250V AC/DC

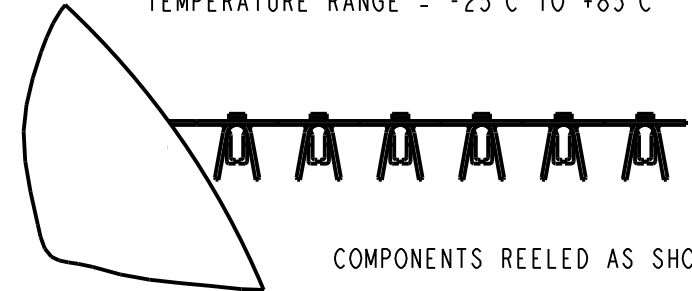
CURRENT RATING = 2A AC/DC

DIELECTRIC STRENGTH = 800V AC FOR 1 MINUTE

INSULATION RESISTANCE = 1,000 MEGOHMS MIN

ENVIRONMENTAL:

TEMPERATURE RANGE = -25°C TO +85°C



COMPONENTS REELED AS SHOWN



NOTES:

1. TO BE USED WITH CRIMP MOULDING M22-307XX00, SPECIFICATION SHOWN BELOW APPLY WHEN ASSEMBLED IN THIS MOULDING.
2. QUANTITY PER REEL = 10K.
3. ACCEPTS WIRE RANGE 24-30 AWG.
4. DIAMETER OF WIRE INSULATION = $\varnothing 1.4$ MAX
5. PITCH BETWEEN CONTACTS = 7mm.
6. FOR HAND CRIMPING ONTO WIRE, USE HAND TOOL Z22-020 (INSTRUCTION SHEET IS-05). STRIP WIRE BY 1.5 - 2.0mm BEFORE CRIMPING.
7. RECOMMENDED CONDUCTOR CRIMP HEIGHTS:
FOR 28 - 30AWG = 0.62 ± 0.03 mm
FOR 24 - 26AWG = 0.70 ± 0.03 mm

OBsolete

ORDER CODE:
M22-30600XX
FINISH: _____
~~05 = GOLD~~
46 = 100% TIN OVER NICKEL

SB	11	15.06.12	11756
NAME	ISS.	DATE	C/NOTE
APPROVED:		S.BENNETT	
CHECKED:		M.PLESTED	
DRAWN:		D.BECK	
CUSTOMER REF.:			
ASSEMBLY DRG:			

HARWIN

www.harwin.com
technical@harwin.com

THIS DRAWING AND ANY INFORMATION OR DESCRIPTIVE MATTER SET OUT HEREON ARE CONFIDENTIAL AND COPYRIGHT PROPERTY OF THE HARWIN GROUP AND MUST NOT BE DISCLOSED, LOANED, COPIED OR USED FOR MANUFACTURING, TENDERING OR FOR ANY OTHER PURPOSE WITHOUT THEIR WRITTEN PERMISSION.

TOLERANCES
X. = ± 1 mm
X.X = ± 0.25 mm
X.XX = ± 0.10 mm
X.XXX = ± 0.01 mm
ANGLES = $\pm 5^\circ$
UNLESS STATED

MATERIAL:

SEE ABOVE

FINISH:

SEE ABOVE

S/AREA:

mm²

TITLE:

2mm CRIMP TERMINAL (REELED)

DRAWING NUMBER:

M22-30600XX

SHT
2 OF 2