

**NOTES:**

- ① MAT'L: COPPER (STOCK TKN.  $\frac{.031}{79}$ )
- ② PLATING: ELECTRO TIN (.0003 MIN)
- ③ TIN-PLATED BRASS FUNNEL FERRULE
- ④ NYLON INSULATION (COLOR CODED RED)

STUD SIZES:( $\pm .005$ )

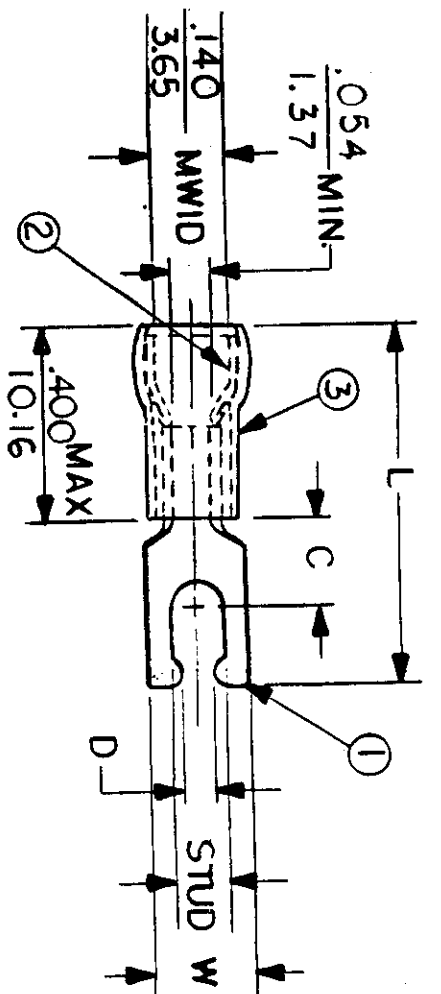
- 02 = .094
- 04 = .119
- 06 = .146
- 08 = .173
- 10 = .198
- 14 = .265
- 56 = .328
- 38 = .390

"UL" LISTING # E32244  
 "CSA" LISTING # 18689

WIRE SIZE: 22 - 18 AWG<sup>2</sup>  
 .25 - 1.5 MM<sup>2</sup>

ALL DIMENSIONS =  $\frac{\text{INCHES}}{\text{MM}}$

(M/WID) = DENOTES MAXIMUM WIRE INSULATION DIAMETER



FILE NO.

AA-CD-805-01

PART NUMBER	"W" ±.010	"C" MIN.	"L" MAX.	"D" ±.005	AVAILABLE STUD SIZES	DIMENSIONAL TOLERANCES UNLESS OTHERWISE SPECIFIED		REFERENCE	SCALE: NTS		DATE	TITLE
						FRAC.	DEC.		ANG.	DRWN. BY:		
AA-8190-	.260 6.60	.235 5.97	.870 22.10	.111 2.82	06						11.8.84	SNAP SPADE TONGUE TERMINAL AVIKRIMP 800-SERIES
AA-8191-	.290 7.37	.235 5.97	.880 22.35	.137 3.48	08							
AA-8192-	.328 8.33	.235 5.97	.930 23.62	.163 4.14	10							

DWG. NO. **A** CUSTOMER DWG

**ETC** mox INCORPORATED