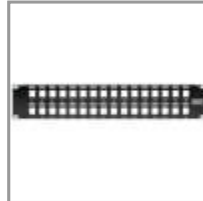
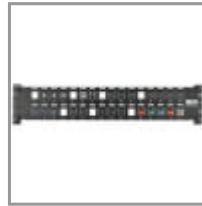
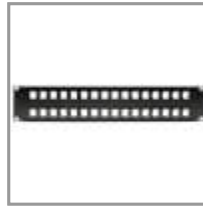


## 32-Port 2U Rack-Mount Unshielded Blank Keystone/Multimedia Patch Panel, RJ45 Ethernet, USB, HDMI, Cat5e/6

MODEL NUMBER: **N062-032-KJ**



### Highlights

- 32 blank cutouts compatible with all Tripp Lite keystone jacks
- For Ethernet, voice, audio/video, USB applications and more
- Heavy-duty cold-rolled steel construction
- Numbered ports for easy connection identification
- Mounts into 2U of standard 19 in. 2-post or wall-mount rack

### Package Includes

- N062-032-KJ 32-Port 2U Rack-Mount Unshielded Blank Keystone/Multimedia Patch Panel
- Grounding wire

Manages and organizes input and output cable connections in your network. Customizable solution for a variety of applications, including Ethernet, voice, audio/video and USB.

### Description

The N062-032-KJ 32-Port 2U Rack-Mount Unshielded Blank Keystone/Multimedia Patch Panel manages and organizes the cabling in your network. The 32 blank cutouts accommodate all Tripp Lite keystone jacks, and some other keystone jacks in the market, including RJ45 Ethernet, HDMI audio/video, voice and USB applications. Ports are clearly numbered to help you identify connections. Mounts easily into 2U of an EIA-standard 19-inch two-post rack or wall-mount rack enclosure. Made from heavy-duty cold-rolled steel. Grounding wire included.

### Features

**Manages and Organizes a Wide Variety of Cabling** 32 blank cutouts accommodate all Tripp Lite keystone jacks, and some other keystone jacks in the market  
For use with RJ45 Ethernet, HDMI audio/video, voice, USB and other applications  
Ports are numbered for easy connection identification  
Heavy-duty cold-rolled steel construction

**Quick, Easy Installation** Mounts easily into 2U of EIA-standard 19 in. 2-post rack or wall-mount rack enclosure  
Includes grounding wire

## Specifications

OVERVIEW	
UPC Code	037332193605
Product Type	Blank
Technology	Cat5/5e; Cat6; Cat6a; DisplayPort; HDMI; USB 2.0 (High Speed)
PHYSICAL	

Color	Black
Shipping Dimensions (hwd / in.)	0.67 x 1.85 x 19.61
Shipping Dimensions (hwd / cm)	1.70 x 4.70 x 49.81
Shipping Weight (lbs.)	1.40
Shipping Weight (kg)	0.64
<b>CONNECTIONS</b>	
Number of Ports	32
Side A - Connector 1	KEYSTONE JACK CUTOUT
Side B - Connector 1	KEYSTONE JACK CUTOUT
<b>FEATURES &amp; SPECIFICATIONS</b>	
IP68 Rated	No
IP20 Rated	No
<b>STANDARDS &amp; COMPLIANCE</b>	
Product Compliance	RoHS
<b>WARRANTY &amp; SUPPORT</b>	
Product Warranty Period (Worldwide)	Lifetime limited warranty
Warranty Details	LIFETIME LIMITED