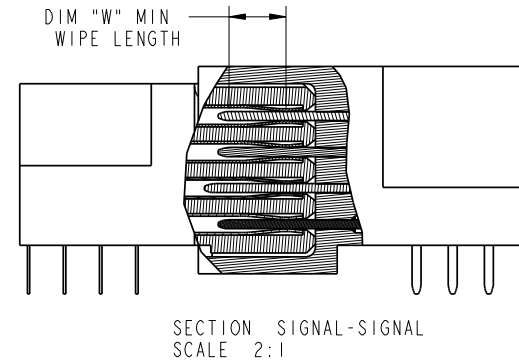
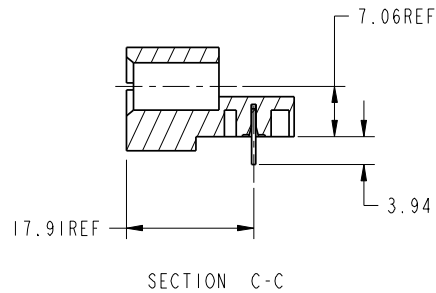
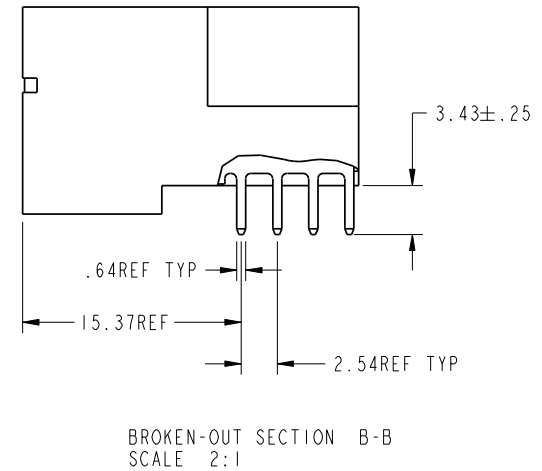
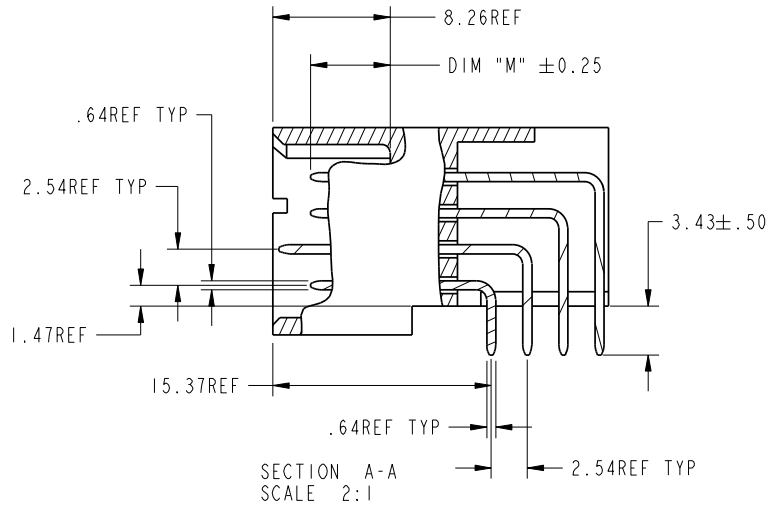


Tous droits strictement reserves. Reproduction ou communication a des tiers interdite sous quelque forme que ce soit sans autorisation écrite du propriétaire. Propriete de c FCI. Droits de reproduction FCI.



All rights strictly reserved. Reproduction or issue to third parties in any form whatever is not permitted without written authority from the proprietor. Property of FCI. Copyright FCI.

PRODUCT NUMBER
51730-137--
NOTE: 3



mat'l code				SEE NOTE		tolerances unless otherwise specified		CUSTOMER		 www.fciconnect.com	
lfr	ecr no.	dr	date	linear	0.X ±0.3	projection		COPY		title	
A					0.XX ±0.13					2P + 16S + 4P	
				angles	0.XXX ±0.051					RIGHT ANGLE SOLDER HEADER	
				dr	0° ±2°			product family		PwrBlade	code
				engr	JULIA WANG 10/15/07	5:16		size		dwg no	213
				chr	JEROME CHEN 10/15/07			A		51730-137	sheet
				appd	GARY HSIEH 10/15/07						2
					JOSEPH HSIA 10/15/07						
sheet index	revision sheet										

cage code 22526

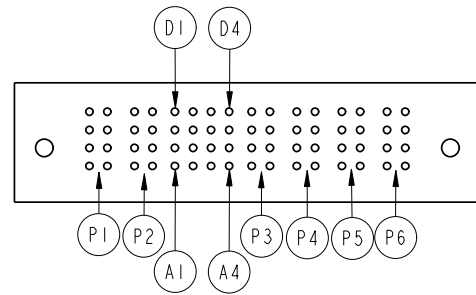
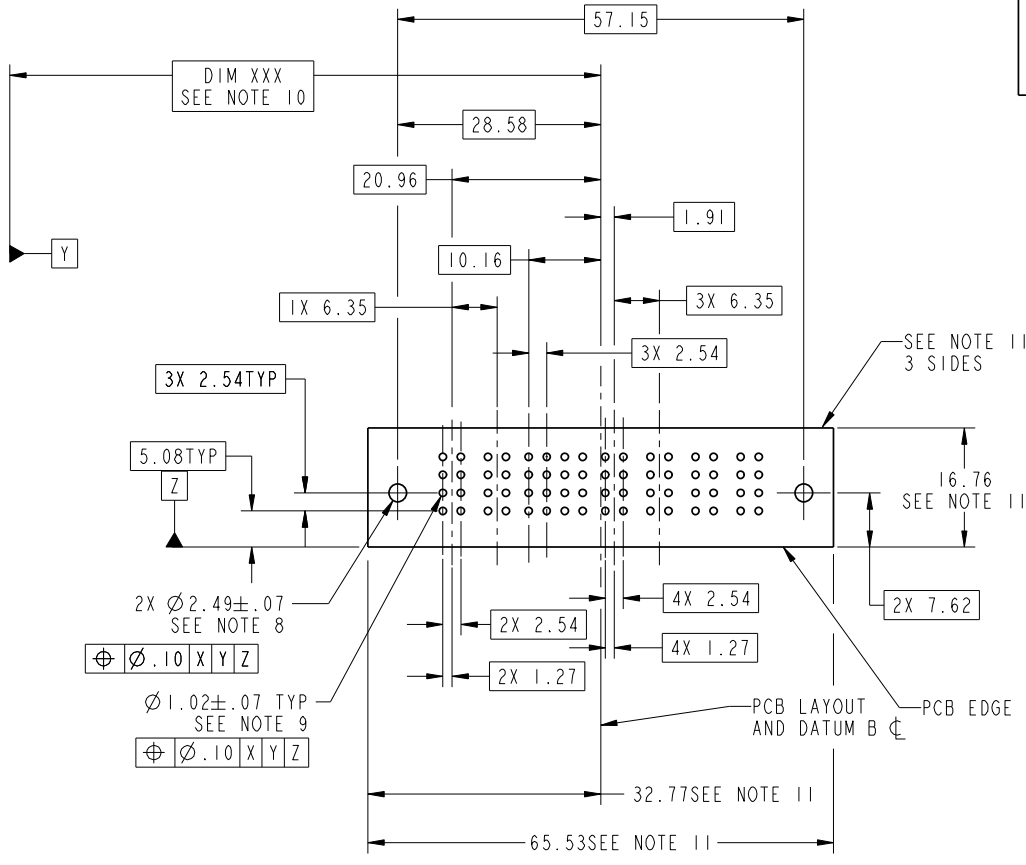
Pro/E

Tous droits strictement reserves. Reproduction ou communication a des tiers interdite sous quelque forme que ce soit sans autorisation ecrite du proprietaire. Propriete de c FCI. Droits de reproduction FCI.



All rights strictly reserved. Reproduction or issue to third parties in any form whatever is not permitted without written authority from the proprietor. Property of FCI. Copyright FCI.

PRODUCT NUMBER
51730-137--
NOTE: 3



RECOMMENDED PCB LAYOUT
(TOP SIDE VIEW)
TOP SIDE OF PCB

RECOMMENDED PCB LAYOUT

mat'l code		SEE NOTE		tolerances unless otherwise specified		CUSTOMER		www.fciconnect.com	
lfr	ecn no.	dr	date	linear	0.X ± 0.3	COPY		title	
A				angles	0.XX ± 0.13	projection		2P + 16S + 4P	
				dr	0.XXX ± 0.051			RIGHT ANGLE SOLDER HEADER	
				enr	0° ± 2°			product family	
				chr	JULIA WANG 10/15/07	5:16		PwrBlade	
				appd	JEROME CHEN 10/15/07	A		code	
					GARY HSIEH 10/15/07			213	
					JOSEPH HSIA 10/15/07			sheet	
sheet index	revision							3	
	sheet							3	

cage code 22526

Pro/E

Tous droits strictement reserves. Reproduction ou communication a des tiers interdite sous quelque forme que ce soit sans autorisation ecrite du propriétaire. Propriete de c FCI. Droits de reproduction FCI.



All rights strictly reserved. Reproduction or issue to third parties in any form whatever is not permitted without written authority from the proprietor. Property of FCI. Copyright FCI.

PRODUCT NUMBER
51730-137--
NOTE: 3

NOTES:

1. DIMENSIONS AND TOLERANCES ARE IN ACCORDANCE WITH ASME Y14.5M, 1994 UNLESS OTHERWISE SPECIFIED.

CONNECTOR NOTES:

- 2. HOUSING MATERIAL: UL 94 V-0 GLASS FILLED
HIGH-TEMP THERMOPLASTIC
POWER CONTACT MATERIAL: COPPER ALLOY
SIGNAL PIN MATERIAL: COPPER ALLOY
- 3. MATING_FOR_51730-114CUST; MATING_FOR_51730-114CUSTLF PLATING SPEC. SEE PRINT:10064183
- 4. MANUFACTURER'S NAME, P/N, AND DATE CODE TO APPEAR ON THIS SURFACE.
- 5. PRODUCT SPECIFICATION GS-12-149.
APPLICATION SPECIFICATION BUS-20-067.
- 6. PACKAGED IN TRAYS.

PCB NOTES:

- 7. ALL HOLE DIAMETERS ARE FINISHED HOLE SIZE.
- 8. MOUNTING HOLES, WHERE APPLICABLE, ARE UNPLATED.
- 9. $\varnothing 1.151 \pm 0.025$ DRILLED HOLES PLATED WITH
0.008 MIN SnPb OR Sn OVER 0.03
TO 0.08 Cu PLATING TO ACHIEVE
 $\varnothing 1.02 \pm .07$ HOLE.
- 10. "DIM XXX" TO BE DETERMINED BY THE CUSTOMER.
- 11. CONNECTOR KEEP-OUT ZONE.

mat'l code		SEE NOTE		tolerances unless otherwise specified		CUSTOMER		FCI www.fciconnect.com	
ltr	ecr no.	dr	date	linear	0.X ± 0.3	COPY		title	
A					0.XX ± 0.13	projection		2P + 16S + 4P	
				angles	0.XXX ± 0.051	⊕		RIGHT ANGLE SOLDER HEADER	
				dr	0° ± 2°	MM		product family PwrBlade	
				engr	JULIA WANG 10/15/07	←		code 213	
				chr	JEROME CHEN 10/15/07	scale		size	
				appd	GARY HSIEH 10/15/07	5:16		dwg no	
					JOSEPH HSIA 10/15/07			A 51730-137	
sheet index	revision sheet								sheet 4

cage code 22526

Pro/E