



**DE**SERIES

**COMPACT IEC CONNECTOR FILTERS**



**INTRODUCTIONS**

1. Designed as a general purpose filter with an IEC connector.
2. Bleeder resistor is added for EG3E, EG3B, EG3R, EW3B, EW3E, EW3R, EG3S numbers with suffix "R".

**SPECIFICATIONS**

1. Maximum leakage current each line-to-ground @ 115VAC 60Hz: 0.25mA @ 250VAC 50Hz: 0.45mA
2. Hipot rating (one minute) line-to-ground: 2250VDC line-to-line: 1450VDC
3. Operating frequency: 50/60Hz
4. Rated voltage: 115/250VAC

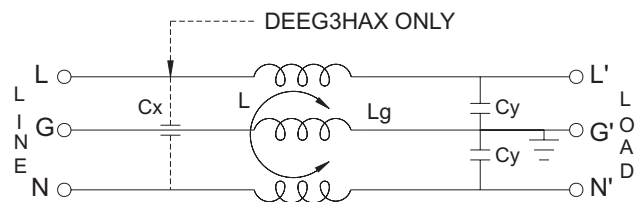
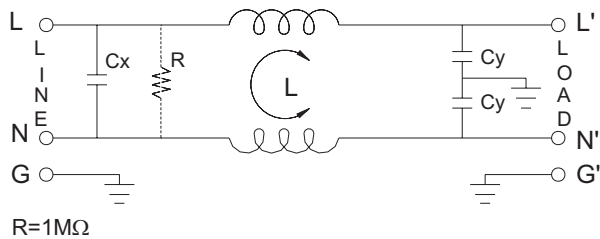
**COMPONENTS**

PART NO.	Cx (uF)	L (mH)	Cy (pF)
01DEEG3R/-R	0.033	0.26	2200
01DEEW3R/-R		5	
01DEEG3S/-R		5.5	
01DEEG3E/-R	0.015	1.9	3300
01DEEW3E/-R		1.9	
•01DEEG3L	—	0.34	1000
03DEEG3R/-R	0.033	0.18	2200
03DEEW3BS/-R		2.5	
03DEEW3R/-R		1.8	
03DEEG3B/-R		1.8	
03DEEG3S/-R		1.8	
03DEEW3B/-R	0.015	1.1	3300
03DEEG3E/-R		1.1	
03DEEW3E/-R		1.1	
•03DEEG3HA	—	0.032	

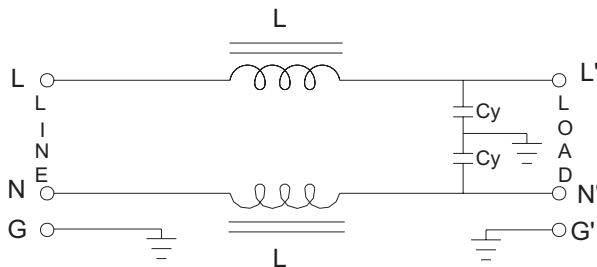
PART NO.	Cx (uF)	L (mH)	Cy (pF)
• 03DEEG3L	—	0.08	1000
• 03DEEG3HAX	0.015	0.032	3300
06DEEG3R/-R	0.033	0.072	2200
06DEEW3R/-R		0.5	
06DEEG3S/-R		0.6	
06DEEG3B/-R	0.015	0.55	3300
06DEEW3B/-R		0.55	
06DEEG3E/-R	—	0.032	3300
06DEEW3E/-R		0.016	1000
*06DEEG3HA	0.033	0.18	2200
• 06DEEG3L		0.18	
10DEEG3B/-R		0.18	
10DEEG3S/-R		0.18	
10DEEW3B/-R		0.018	
10DEEW3R/-R	0.018		
10DEEG3R/-R			

- \* UL & CSA approved only
- UL, CSA & VDE approved

**ELECTRICAL SCHEMATIC**



DEEG3HA ONLY  
Lg: 0.032mH



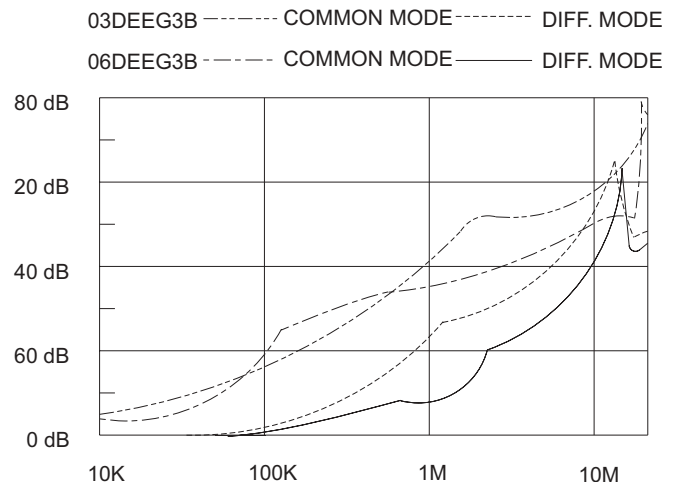
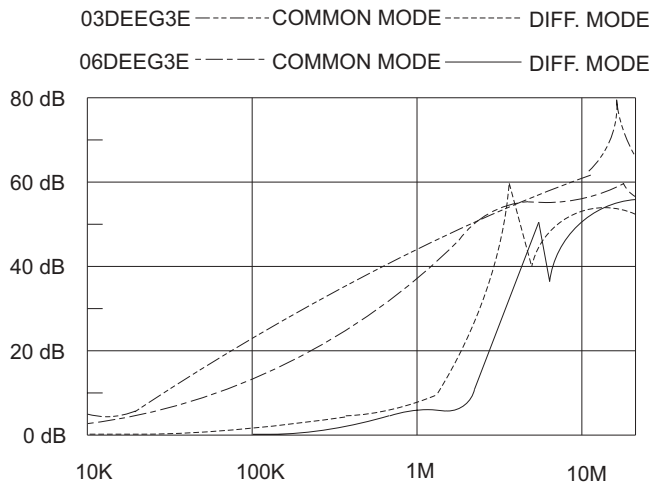
## MINIMUM INSERTION LOSS IN dB

COMMON MODE (L-G) IN 50 OHM SYSTEM													
CURRENT RATING	FREQUENCY-MHz						CURRENT RATING	FREQUENCY-MHz					
	.15	.50	1.0	5.0	10	30		.15	.50	1.0	5.0	10	30
1A(E)(S)	22	35	40	45	45	50	1A(R)	7	15	20	40	50	55
3A(E)(S)	18	28	32	45	45	50	3A(R)	5	10	18	35	45	50
6A(E)(S)	12	20	25	40	45	50	6A(R)	1	5	10	30	40	50
10A(S)	4	10	15	30	38	45	10A(R)	0	1	2	18	28	40
6A,3A(HA)	0	1	3	14	21	41	1A(L)	3	10	15	32	30	20
1A(B)	28	40	45	45	45	45	3A(L)	1	2	5	25	25	20
3A(B)	22	30	35	45	45	45	6A(L)	0	0	1	10	15	25
6A(B)	12	20	25	40	45	45							

DIFFERENTIAL MODE (L-L) IN 50 OHM SYSTEM													
CURRENT RATING	FREQUENCY-MHz						CURRENT RATING	FREQUENCY-MHz					
	.15	.50	1.0	5.0	10	30		.15	.50	1.0	5.0	10	30
1A(E)(S)	2	6	40	42	40	40	A(R)	1	5	12	38	38	40
3A(E)(S)	2	3	35	40	40	40	3A(R)	1	5	10	35	35	40
6A(E)(S)	2	3	35	38	40	40	6A(R)	1	5	10	30	30	40
10A(S)	4	8	20	20	30	30	10A(R)	1	5	10	25	30	40
1A(B)	2	10	20	40	42	40	1A(L)	7	1	20	32	27	20
3A(B)	2	5	14	38	40	40	3A(L)	1	5	10	25	25	20
6A(B)	2	5	10	35	38	40	6A(L)	0	0	2	10	15	25

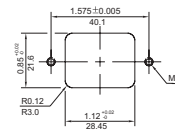
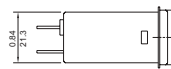
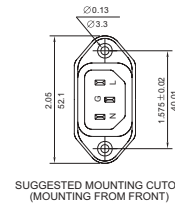
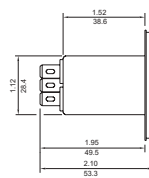
## INSERTION LOSS (TYPICAL)



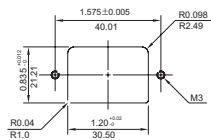
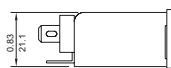
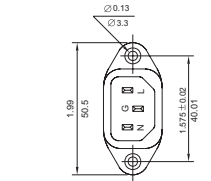
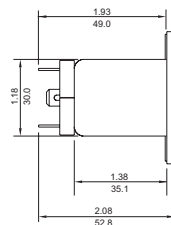
## MECHANICAL CONSTRUCTION



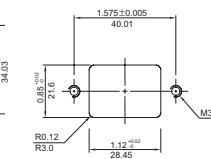
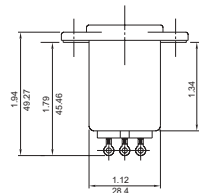
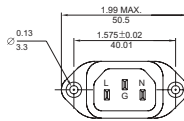
EG3E/EG3B/EG3R/EG3L  
(Optional Solder Lug)



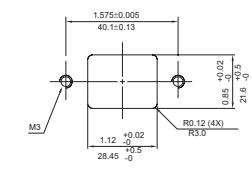
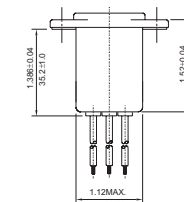
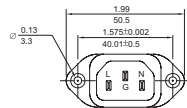
EG3HA



EG3S



W3BS



UNIT:  $\frac{\text{INCH}}{\text{mm}}$

ALL WIRE LEADS 4.0" LONG MIN.