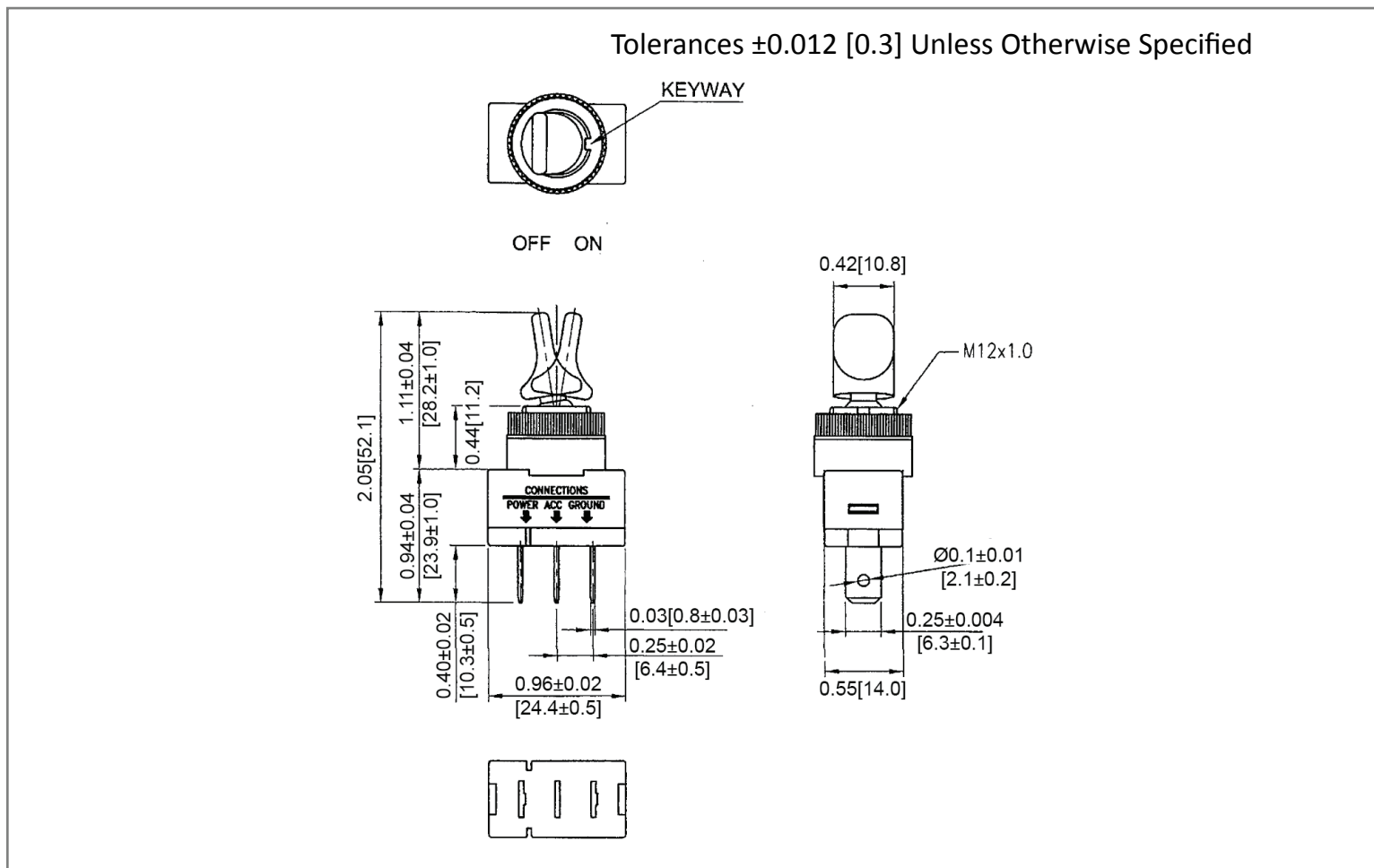
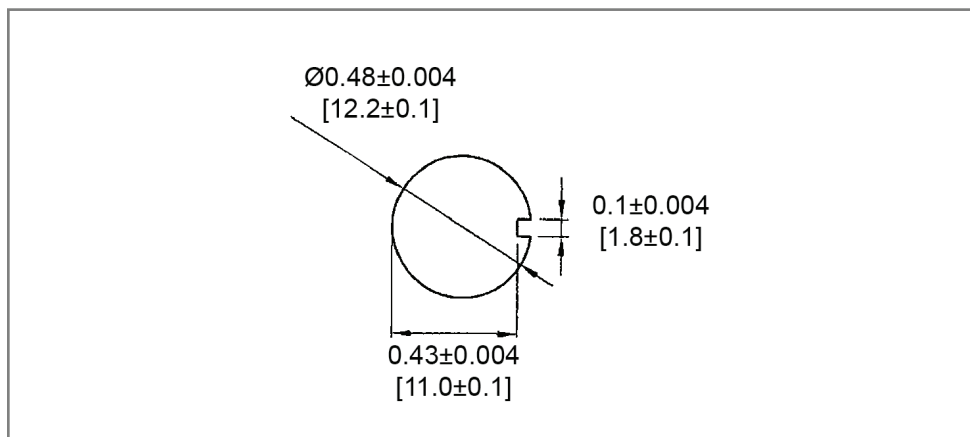


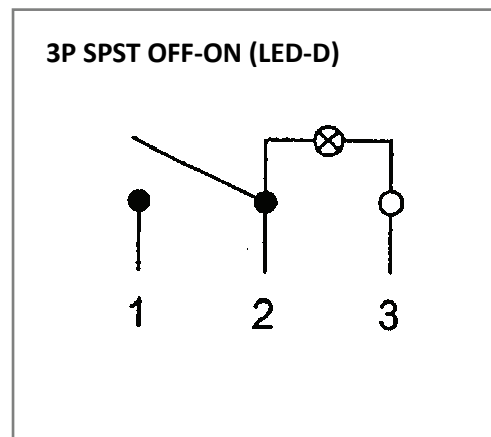
Mechanical Dimensions: Inches [mm]



Mounting Hole



Circuit Diagram



Electrical Specifications

Rating	20A 12V DC
Contact Resistance	50m ohm Max
Insulation Resistance	DC 500V 100M ohm Min
Dielectric Strength	AC 1500V 1 minute
Operation Temperature	-25°C ~ 85°C

Material Specifications

Frame	Amber, PC
Base	PBT, Black
Handle	PC, Green Clear
	Bulb Dependent

Toggle Switch

TE6-1A-DC-1-AL



Rev	Date of issue	Revision Notes	Designed	Approved
A	03-02-2023	Initial Drawing	RC	OF