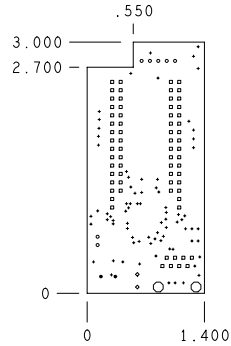


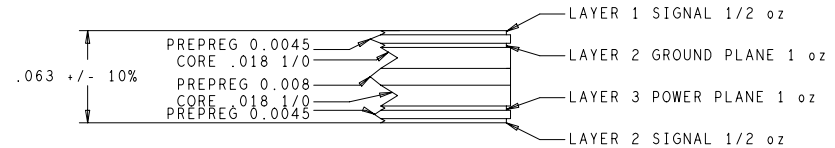
| REVISIONS | | | |
|-----------|---------------------------|----------|----------|
| REV | DESCRIPTION | DATE | APPROVED |
| ** | RELEASE FOR MANUFACTURING | 11/30/05 | CKS |



| DRILL CHART | | | | |
|-----------------------|-------|-----------------|------------|-----|
| ALL UNITS ARE IN MILS | | | | |
| FIGURE | SIZE | TOLERANCE | PLATED | QTY |
| . | 10.0 | 0.003 -0.010 | PLATED | 77 |
| o | 35.0 | 0.003 | PLATED | 68 |
| o | 40.0 | 0.003 | PLATED | 7 |
| o | 43.0 | 0.003 | PLATED | 2 |
| o | 36.0 | 0.003 | NON-PLATED | 2 |
| o | 128.0 | 0.003 | NON-PLATED | 2 |

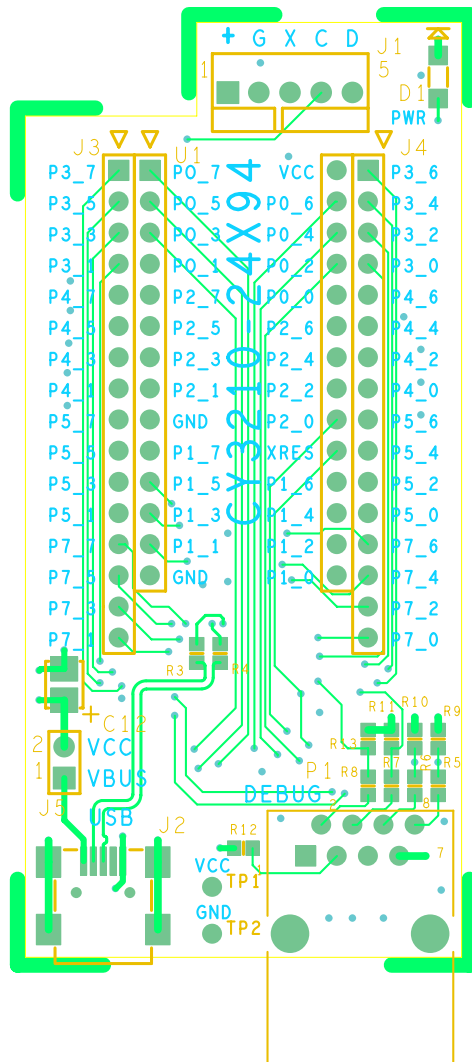
NOTES: UNLESS OTHERWISE SPECIFIED

- MATERIAL:
 - EPOXY GLASS LAMINATE AND PREPREG, TYPE FR-4.
 - USE HTE COPPER 1/2 oz. COPPER FOIL EXTERNAL LAYERS AND 1 oz. COPPER FOIL FOR INTERNAL LAYERS. UNLESS OTHERWISE SPECIFIED IN STACK VIEW.
 - OVERALL METAL TO METAL THICKNESS .063 +/- 10%
- DRILLING:
 - DIAMETERS IN DRILL TABLE ARE FINISHED HOLE SIZES +/- .003. UNLESS OTHERWISE SPECIFIED IN DRILL TABLE.
 - TEARDROP ALLOWED ON ENTRY OF VIA ON EVERY TRACE LAYER.
- PLATING:
 - COPPER PLATING IN THRU-HOLES .001 min.
- MARKING:
 - SILKSCREEN IN WHITE NON-CONDUCTIVE EPOXY INK ON PRIMARY SIDE OF THE BOARD OR BOTH SIDES IF APPLICABLE.
 - FABRICATOR TO ETCH DATE CODE AND LOGO ON SECONDARY SIDE.
- FINAL FABRICATION:
 - SOLDERMASK PRIMARY AND SECONDARY SIDE OF BOARD USING LIQUID PHOTOIMAGABLE MASK MATERIAL OVER BARE COPPER PER IPC-SM-840. MASK ARTWORKS PROVIDED ARE 1:1 SOLDERMASK COLOR **GREEN**.
- WHEN REQUIRED, COPPER FINISH SHALL BE FINISHED TIN-LEAD (60-40 MIN) HASL.
- BOARDS SHALL BE PURCHASED FROM UL RECOGNIZED VENDORS ONLY AND SHALL BE MARKED IN COPPER ON SECONDARY SIDE OF BOARD WITH VENDORS UL IDENTIFICATION. FLAMABILITY RATING (94-V0). AND DATE CODE (WYYY).
- MANUFACTURE BOARD TO BE IN ACCORDANCE WITH PERFORMANCE STANDARD IPC-6011/6012 CLASS 2 BOARD TO BE INSPECTED PER IPC-600-A CLASS 2.
- MAXIMUM WRAP OR TWIST SHALL NOT EXCEED .010 in/in.



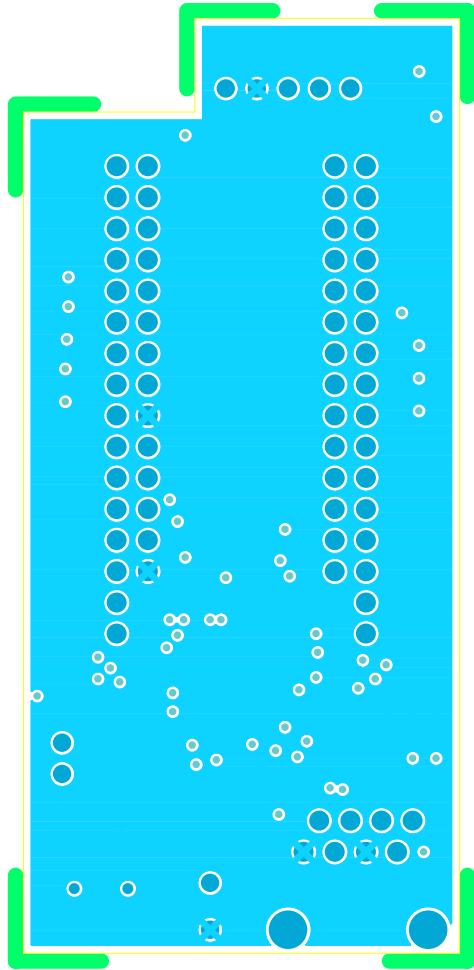
NOTE: 10 MIL 16 MIL SPACING TRACES ON LAYER 1 DIFFERENTIAL IMPEDANCE CONTROLLED TO 90 OHMS +/- 10% TESTED

| | | | | |
|---|-------------|----------|--|---------------|
| UNLESS OTHERWISE SPECIFIED | SIGNATURES | DATE | 12230 World Trade Drive #200 San Diego, CA 92128 (858) 613-7931 | |
| DIMENSIONS ARE IN INCHES | DRAWN ZMK | 10/12/05 | FABRICATION DRAWING CY8C24794 POD MODULE DESIGN | |
| TOLERANCES ON: ANGLES +/- 2° | CHECKED ECU | 11/30/05 | | |
| 2 PL DECIMALS +/- .010 | ENGRG CKS | 11/30/05 | | |
| 3 PL DECIMALS +/- .005 | ISSUED | | | |
| THIRD ANGLE PROJECTIONS | | | SIZE C | FSCM NO |
| CYPRESS PROPRIETARY THIS DOCUMENT CONTAINS CONFIDENTIAL, PROPRIETARY INFORMATION THAT IS CYPRESS SEMICONDUCTOR PROPERTY. DO NOT DISCLOSE TO OR DUPLICATE FOR OTHERS EXCEPT AS AUTHORIZED BY CYPRESS. | | | DWG NO | REV |
| | | | PDC-9278 | ** |
| | | | SCALE: 1/1 | SHEET: 1 OF 1 |

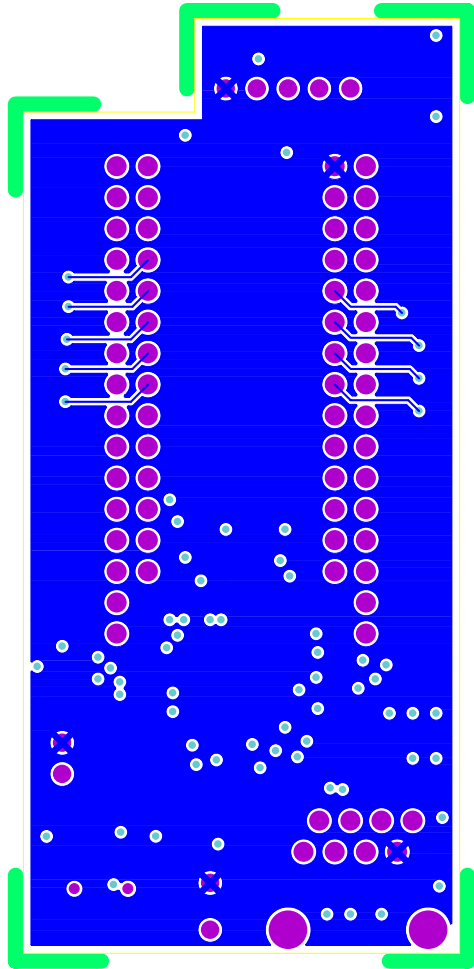


PDC-9278 REV ** PRIMARY SIDE

PDC-9278 REV ** PRIMARY SILKSCREEN



PDC-9278 REV** LAYER 2 GND



PDC-9278 REV** LAYER 3 VCC

PDC-0578 REV ** SECONDARY SIDE

PDC-0578 REV ** SECONDARY SILKSCREEN

