



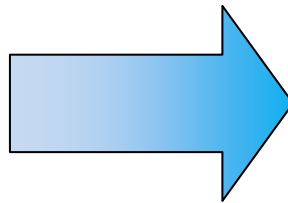
NO: NT-082 **PRODUCT:** NS5-MQ Monochrome HMIs
DATE: September 2013 **TYPE:** Discontinuation Notice

NS5-MQ* Monochrome HMI will be Discontinued March 2014 *6-month Warning*

Due to increasing manufacturing cost and direct product successor road map, Omron will be discontinuing the NS5-MQ Monochrome HMI line in March 2014 – giving our Pan-American customers 6 months to discuss migration and transition plans. Omron will offer pre-order stock past factory discontinuation until September 2014.



NS5-MQ*



NB5Q*



NS5-SQ*

Affected Models

HMI Part Number	Description
NS5-MQ10-V2	NS-Series 5.7" Monochrome, Ivory Bezel, Serial/USB
NS5-MQ10B-V2	NS-Series 5.7" Monochrome, Black Bezel, Serial/USB
NS5-MQ11-V2	NS-Series 5.7" Monochrome, Ivory Bezel, Ethernet/Serial/USB
NS5-MQ11B-V2	NS-Series 5.7" Monochrome, Black Bezel, Ethernet/Serial/USB

Timeline

September 2013	Release Discontinuation Notice
February 28, 2014	Last Order Acceptance
March 31, 2014	Stop Factory Production
September 2014	End Overstock Availability (estimated)
March 30, 2021	Stop Accepting Repairs/Maintenance

Recommended Transition

There are two product migration paths for the NS5-MQ* HMI models:

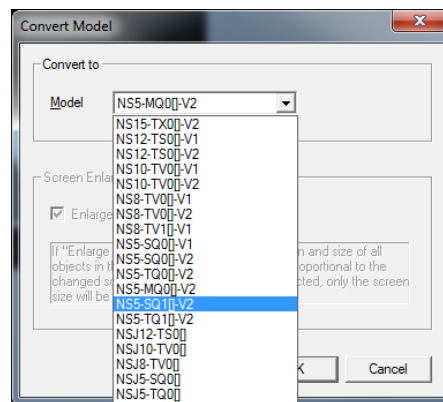
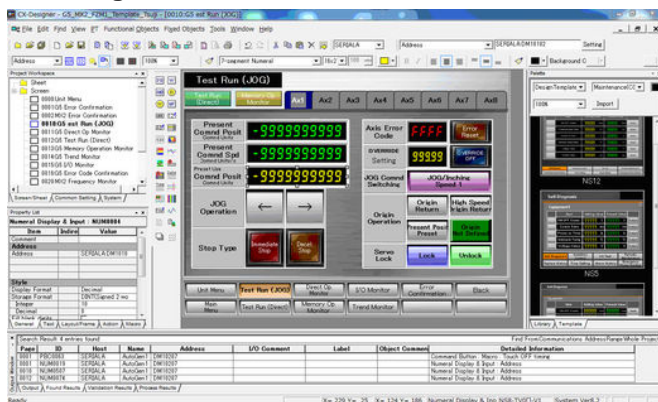
1. NS5-SQ* or NS5-TQ* HMI Models
2. NB5Q HMI Models

Option 1. NS5-SQ* or NS5-TQ* HMI Models

This is the easiest product migration path, minimizing project conversion time using CX-Designer software. All NS-SQ/TQ* HMI functionality is equal to the discontinued NS5-MQ* models, but with color displays instead of monochrome. Mounting dimensions are the same.

Item	NS5-MQ1*(B)-V2	NS5-SQ1*(B)-V2	NS5-TQ1*(B)-V2
Display device	STN Monochrome LCD	TFT Color LCD	High-Luminance TFT color LCD
Display colors	16 Gradient Monochrome	256	
Software	CX-Designer		
External I/F	Port A/B (serial), USB, Extended I/F, CF I/F, Ethernet (select models)		
External memory device	Compact Flash card		
Backlight Service Life	50,000 hours	75,000 hours	

CX-Designer

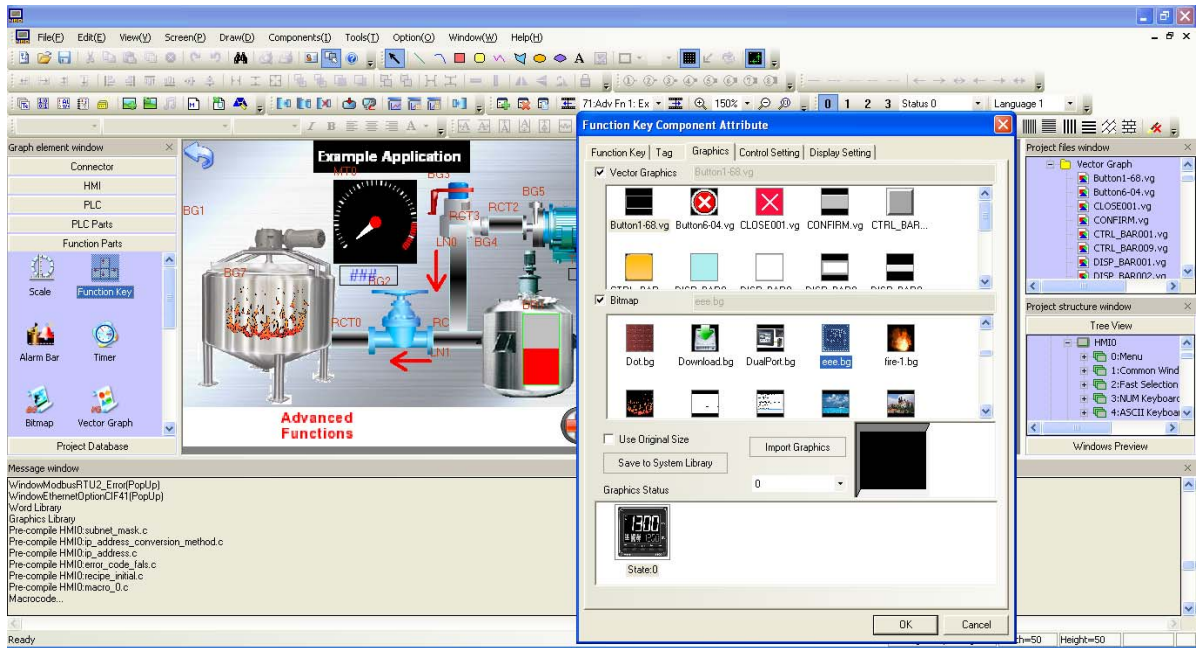


Option 2. NB5Q* HMI Models

For situations where HMI unit cost is critical, the NB5Q HMI is another possible migration path. This option will require project conversion into the free downloadable software, NB-Designer. Please note that some functionality of the NS-Series will be lost going to the NB-Series.

Item	NS5*	NB5Q-TW00B/NB5Q-TW01B
Screen Size (inches)	5.7	5.6
LCD Display	STN Monochrome LCD	TFT Color LCD
Backlight	CFL (50,000 hours)	LED (50,000 hours)
Colors	16 Gradient Monochrome	65,536
Resolution	320x240	320x234
Serial Comm. Interfaces	COM1/COM2	COM1/COM2
Ethernet	Select Models	NB5Q-TW01B Only
USB	USB Slave	USB Slave USB Host (NB5Q-TW01B Only)
Memory	60MB	128MB
Power Consumption	15W	6W
Operation Humidity	35~85% RH	10~90% RH
Mass	1.0kg	620g
External Dimensions	195W x 142H x 54.8D mm	184W x 142H x 46D mm
Mounting Dimensions	184W x 131H mm	172.4W x 131.0H mm
Viewing Angle	Mono: 20/40/45/45 (T/B/R/L)	45/65/65/65 (T/B/R/L)
Bezel Color	Black or Ivory	Black
Design Software	CX-Designer (part of CX-One / CX-One Lite)	NB-Designer
Standard	EC, cULus, Class 1 Div 2	EC, UL508
Serial Communication Protocols	Omron CP / CJ / CS / NJ / EJ1 / E5, Mitsubishi FX/A/Q, Yokogawa, Siemens S7-300, Allen Bradley (Serial)	Omron Host Link CP / CJ / CS / NJ, Mitsubishi FX/Q, Siemens S7-200/300/400, Panasonic FP, Schneider Uni-Telway/Twido, Delta DTA/DTB/DTC, LS Master-K/XGT, Modbus RTU/TCP, Allen Bradley, GE Fanuc

NB-Designer



Migration Pricing

Please contact your local Omron Automation & Safety representative for pricing information on each migration path. NS5-SQ* HMI migration pricing will be available.

Migration Targets

Omron Sales Managers have been provided lists of all NS5-MQ* customers for the past 2 years in their region. Please contact your local Omron Automation & Safety representative for leads.